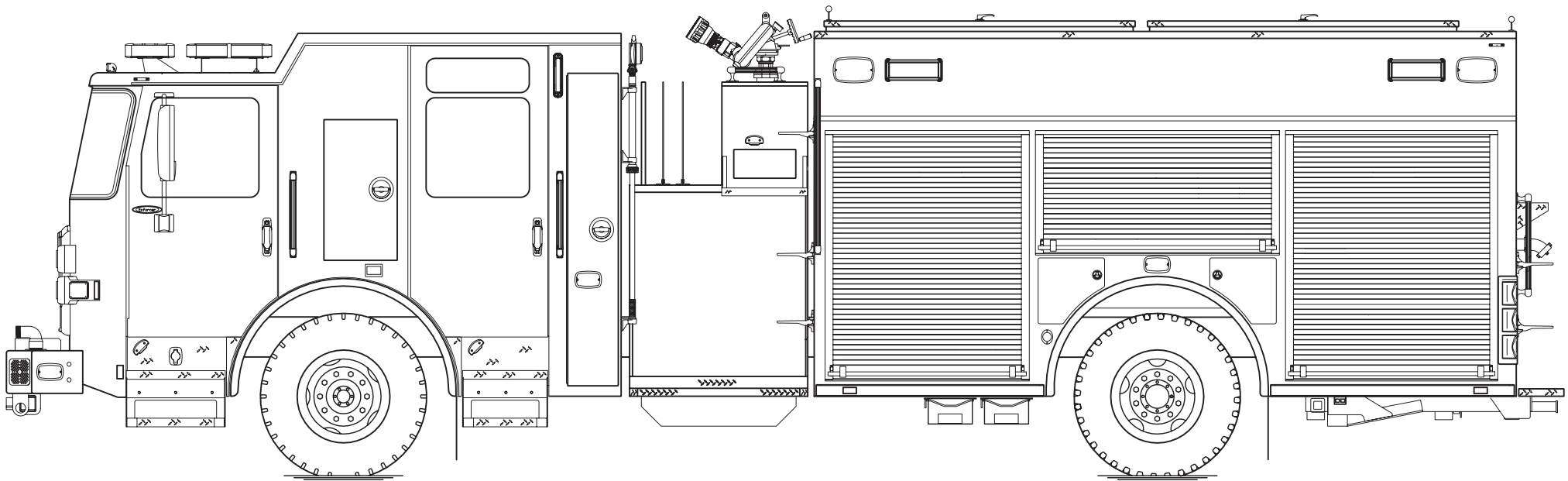




PERFORM. LIKE NO OTHER.™

Jessamine County Fire District, KY Enforcer™ Heavy-Duty Rescue Pumper

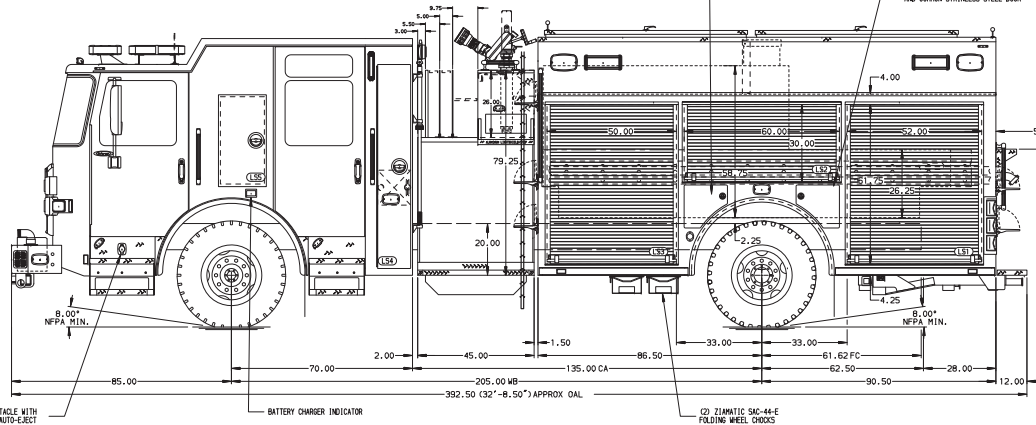
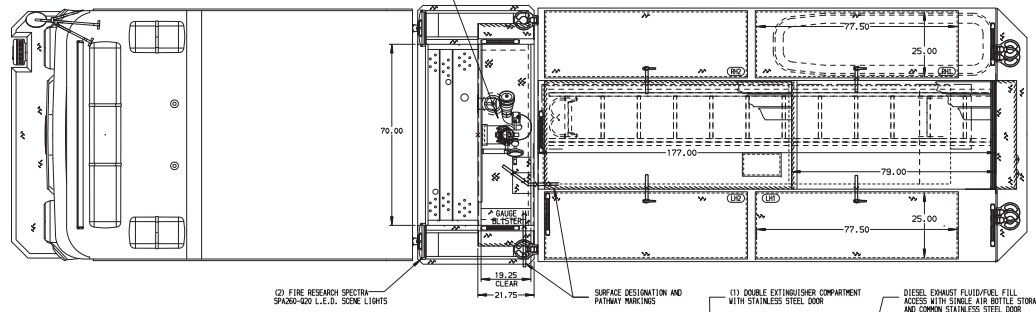
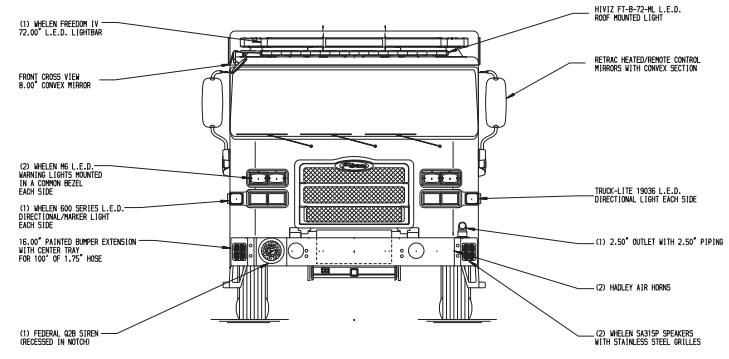
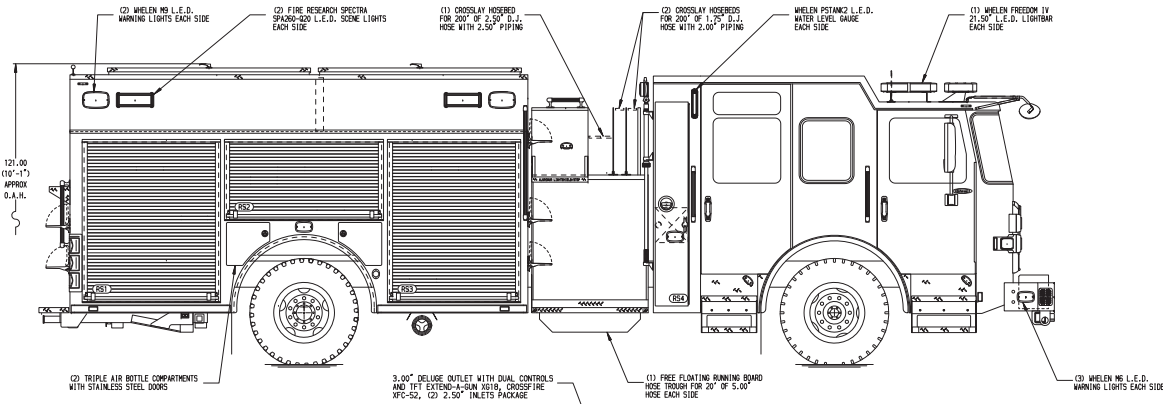


Chassis

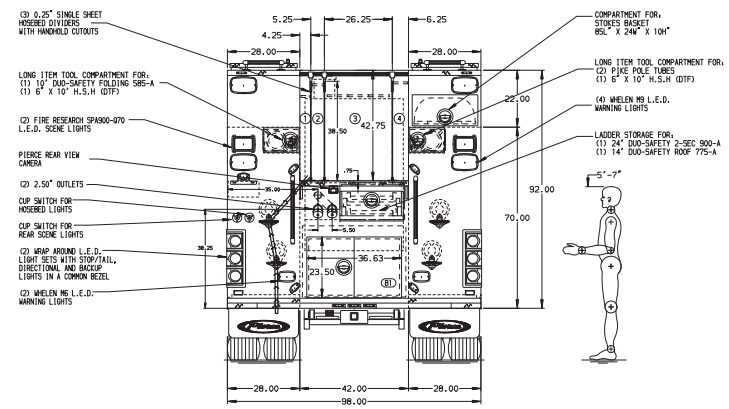
Chassis	70" Enforcer cab with 10" raised roof
Seating Capacity	5
Overall Height	10' 1"
Overall Length	32' 8.5"
GVW Rating	49,800 lb
Safety	Side Roll and Frontal Impact Protection
Front Axle	Dana D-2200F, 22,800 lb
Rear Axle	Dana S26-190, 27,000 lb
Engine	Cummins X12, 500 hp, 1,700 lb-ft

Body

Material	Aluminum
Shelving	Adjustable, up to 500 lb
Doors	Roll-up
Pump	Waterous, 1,500 gpm
Tank	750 gallons
Pump Panel	Pierce® Control Zone™ 45" pump panel



- HOSEBED CAPACITIES
- ① - 300' OF 1.75" D.J. POLY HOSE
 - ② - 300' OF 2.50" D.J. POLY HOSE
 - ③ - 800' OF 5.00" D.J. POLY HOSE
 - ④ - 300' OF 2.50" D.J. POLY HOSE



ALUMINUM BODY

SIDE ROLL AND FRONTAL IMPACT PROTECTION

NOTE
 DIMENSIONS SHOWN ARE APPROXIMATE AND ARE SUBJECT TO MINOR DEVIATIONS AS MAY OCCUR OR BE NECESSARY IN CONSTRUCTION.
 MINOR DETAILS NOT SHOWN.

1. AIR OUTLET WITH SHUT-OFF VALVE LOCATED PER SHOP ORDER
2. PWC TRAC IN CAB PER SHOP ORDER
3. CIRCULAR BATTERY CHARGER IN COMPARTMENT PER SHOP ORDER
4. DUAL L.E.D. LIGHT STRIPS LOCATED IN HOSE BED
5. ALL FOLDING STEPS TO BE TRIDENT WITH INTEGRATED L.E.D. LIGHT UNLESS SPECIFIED

REV	DATE	BY	CH	REV	DATE	BY	CH
190C122	JJB	COS		050C122	JJB	COS	
065F222	JJB	COS		25AUG22	JJB	COS	
03JUN22	CDU	CZA					

		JOB NO.	37408
		SCALE	1:24
TITLE 1500-0-750P, 750 GALLON WATER TANK, 177" HDRP BODY LADDERS THRU TANK, (3) CROSSLAYS, STOKES, DELUGE FOR JESSAMINE COUNTY FIRE DISTRICT NICHOLASVILLE, KENTUCKY	DRWN BY	JUS	20MAY22
	CHEKED BY	CDU	20MAY22
	DWG NO.	37408AD-SH1	SHEET NO.
			1 of 2