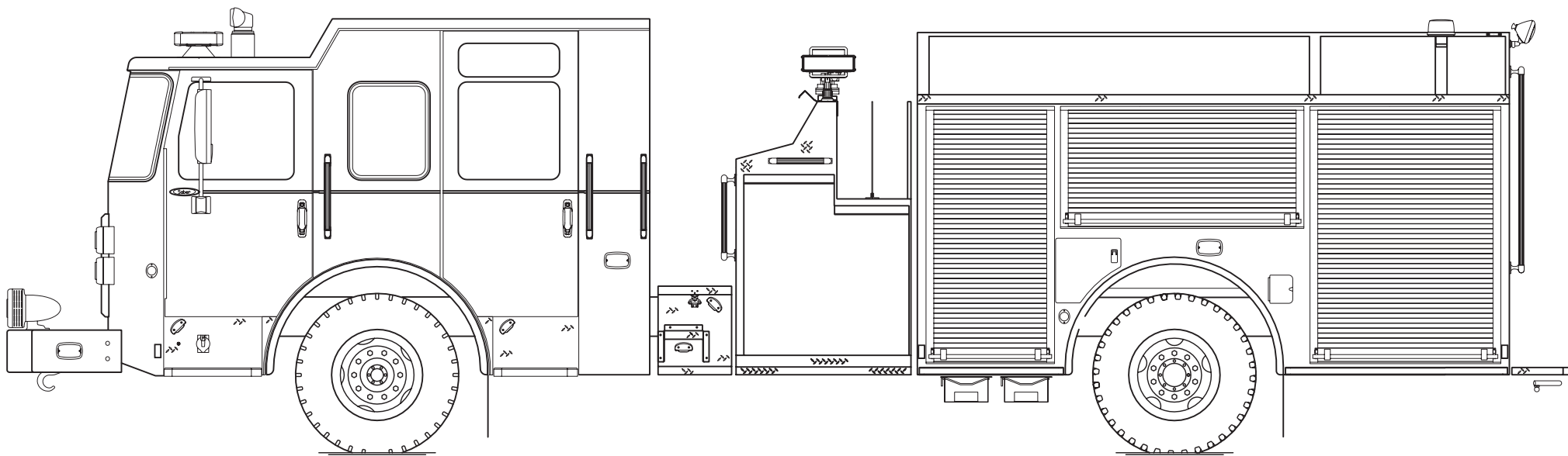




PERFORM. LIKE NO OTHER.™

# Indianapolis Fire Department, IN Saber® Pumper



## Chassis

<b>Chassis</b>	70" <b>Saber</b> cab with 10" raised roof
<b>Seating Capacity</b>	6
<b>Overall Height</b>	9' 7"
<b>Overall Length</b>	33' 5.5"
<b>GVW Rating</b>	42,000 lb
<b>Front Axle</b>	Dana D-2000F, 18,000 lb
<b>Rear Axle</b>	Dana S23-172, 24,000 lb
<b>Engine</b>	Cummins L9, 450 hp, 1,250 lb-ft

## Body

<b>Material</b>	Aluminum
<b>Shelving</b>	Adjustable, up to 500 lb
<b>Doors</b>	Roll-up
<b>Pump Tank</b>	Waterous, 2,000 gpm 500 gallons
<b>Pump Panel</b>	<b>Pierce® Control Zone™</b> 45" top mount pump panel with 19" walkway

**PUMPER  
BODY**

Medium Aluminum 2nd Gen Pumper

**CHASSIS**  
Saber FR Chassis

**CHASSIS  
AXLE, FRONT, CUSTOM**

18,000 Lb Dana Axle

AXLE, REAR

24,000 Lb Dana Axle

**ENGINE**

450 HP Cummins L9 Engine

**TRANSMISSION**

Allison 5th Gen, 3000 EVS P

**BUMPER**

26" Extended Painted Steel

**CAB**

7010 Saber FR Cab

**BODY  
WATER TANK**

500 Gallon New York Style Water Tank

**COMPT, PUMPER, REAR**

30.75" FF RollUp 41.88" Deep Flush Rear Comp

**COMPT, PUMPER, LEFT SIDE**

152" RollUp Full Height Front & Rear FDLER

**COMPT, PUMPER, RIGHT SIDE**

152" RollUp, 3/4 Height Front & Rear, Lap Broom, FDLER

**FIRE SUPPRESSION  
PUMPHOUSE**

45" Control Zone Top Mount

**PUMP**

2000 GPM WATEROUS CMU

**CROSSLAYS, 1.50"**

(1) 1.50" Special Capacity

**CROSSLAYS, 2.50"**

(1) 2.50" Standard Capacity

**SPEEDLAYS**

Speedlays Not Required

**GENERATOR**

Generator Not Required

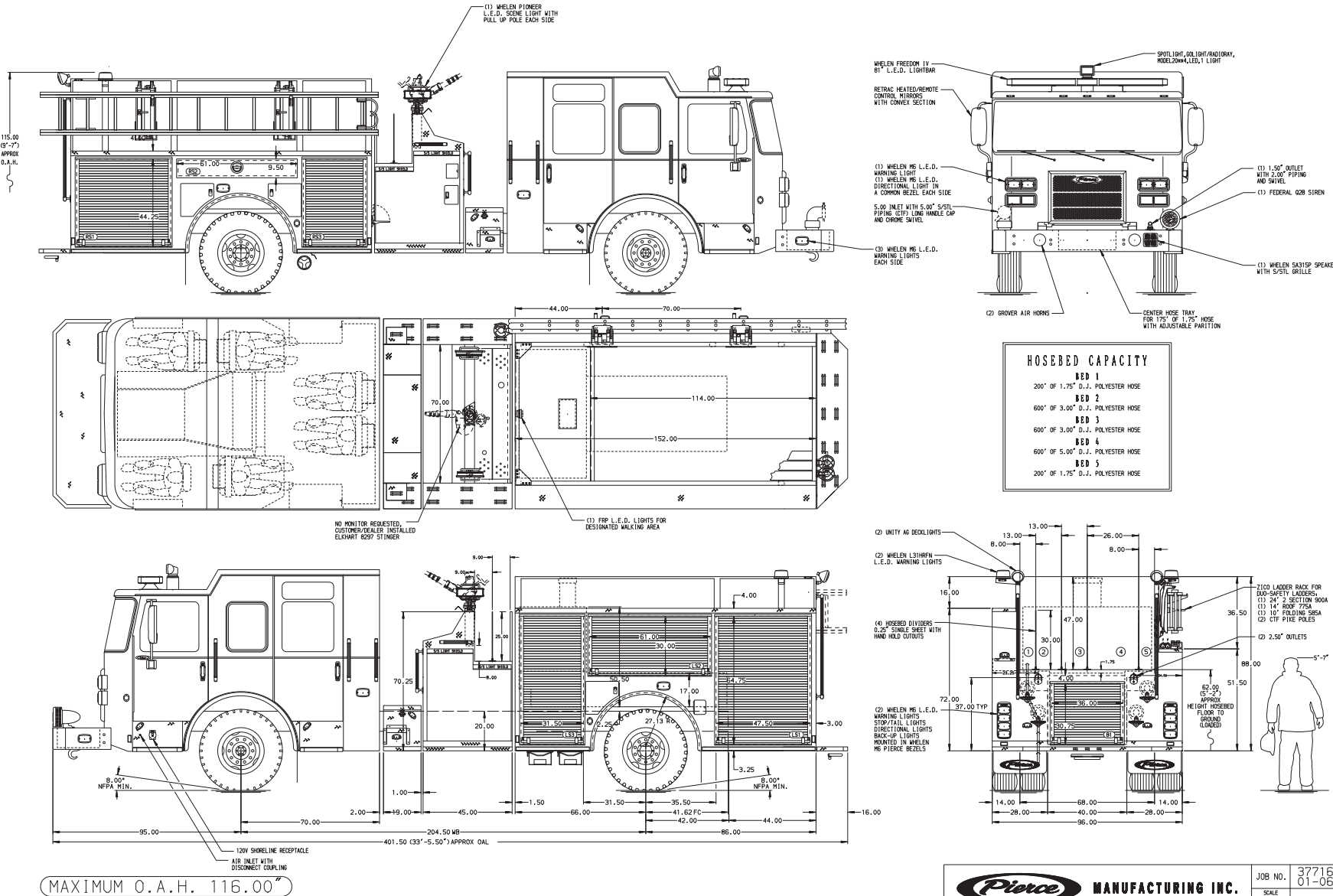
**Foam System**

Foam System Not Required

**Foam Cell**

Foam Cell Not Required

**NOTE**  
DIMENSIONS SHOWN ARE APPROXIMATE  
AND ARE SUBJECT TO MINOR DEVIATIONS  
AS MAY OCCUR OR BE NECESSARY IN  
CONSTRUCTION.  
MINOR DETAILS NOT SHOWN.



<b>Pierce MANUFACTURING INC.</b>		JOB NO.	37716
		SCALE	1:24
		DATE	
TITLE		Pierce Pumper Approval Drawing	
FOR		Indianapolis Fire Department	
DRAWN BY		COL	O2MAR22
CHECKED BY		MHF	O2MAR22
DWG NO.		37716AD	
SHEET NO.		D	1 OF 1

CHASSIS DATA	MAKE	PIERCE
MODEL	MODEL	SABER FR
REV	DATE	BY
02MAR23	RHU	CCS
04MAY22	JLA	GSC