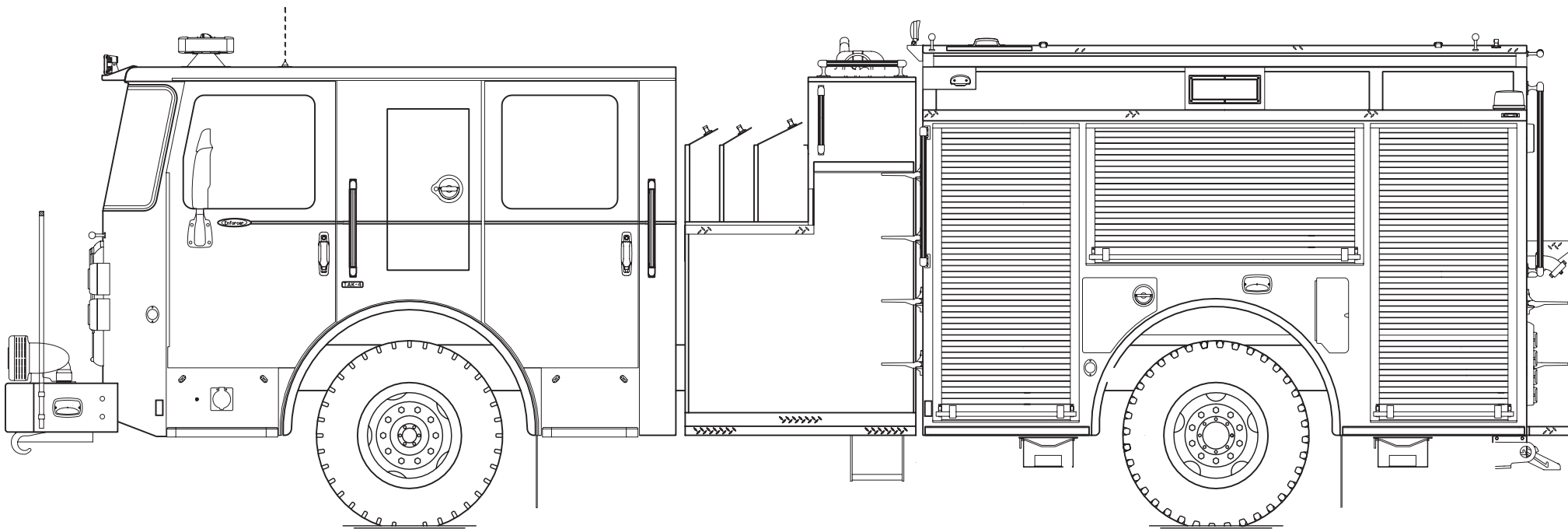




PERFORM. LIKE NO OTHER.™

Cambridge Fire Department, MA Enforcer™ Pumper

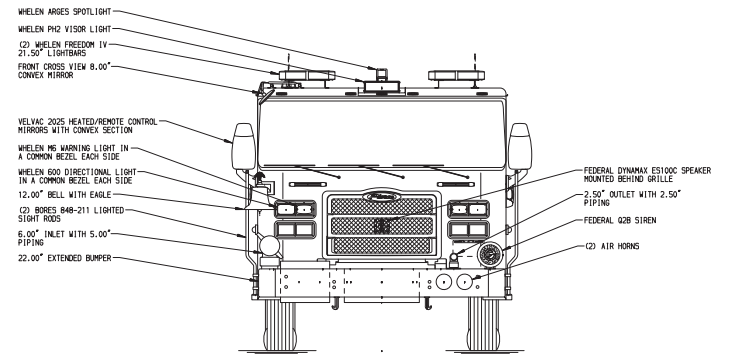
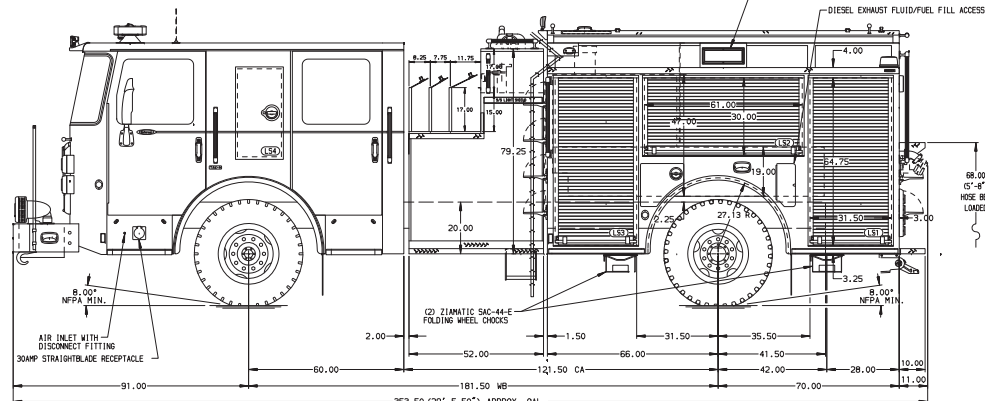
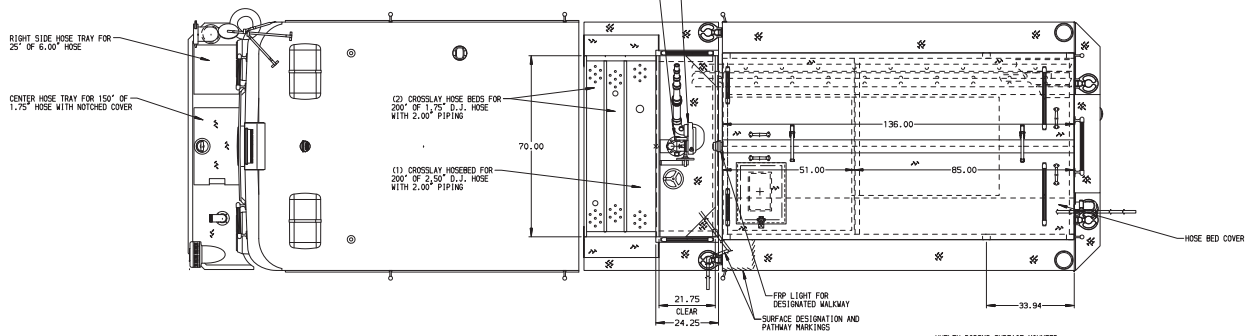
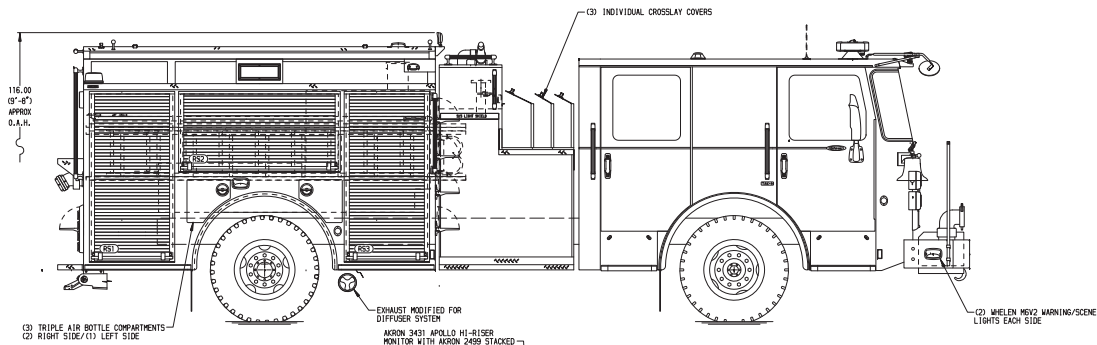


Chassis

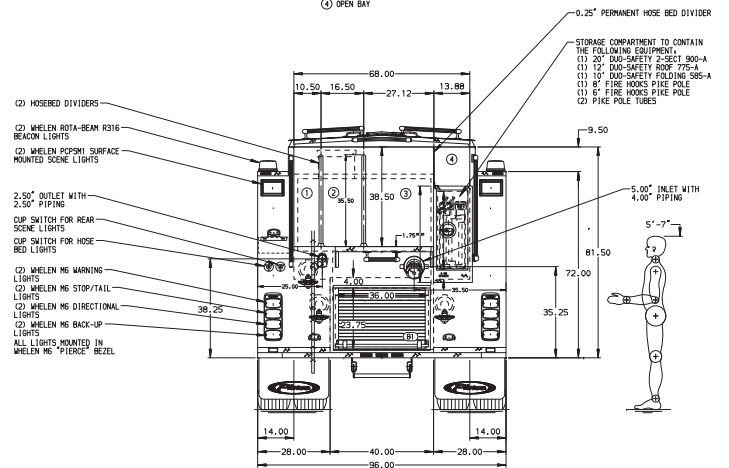
Chassis	60" Enforcer cab
Seating Capacity	4
Overall Height	9' 8"
Overall Length	29' 5.5"
GVW Rating	45,500 lb
Safety	Frontal Impact Protection
Front Axle	TAK-4® Independent Front Suspension , 19,500 lb
Rear Axle	TAK-4 T3™ Independent Rear Suspension , 26,000 lb
Engine	Cummins L9, 380 hp, 1150 lb-ft
Electrical System	Command Zone™ Advanced Electronics System ClearSky™ Telematics Solution

Body

Material	Stainless Steel
Shelving	Adjustable, up to 500 lb
Doors	Rollup
Pump	Waterous, 1,250 gpm
Tank	500 gallons
Pump Panel	Pierce® Control Zone™ 52" pump panel



- HOSEBED CAPACITIES**
- ① 500' OF 2.50" D.J. POLY HOSE
 - ② 850' OF 2.50" D.J. POLY HOSE
 - ③ 1000' OF 4.00" D.J. POLY HOSE
 - ④ OPEN BAY



STAINLESS STEEL BODY MAXIMUM O.A.H. 116.00" FRONTAL IMPACT PROTECTION

NOTE

DIMENSIONS SHOWN ARE APPROXIMATE AND ARE SUBJECT TO MINOR DEVIATIONS AS MAY OCCUR OR BE NECESSARY IN CONSTRUCTION. MINOR DETAILS NOT SHOWN.

1. OSWAGOH TAK-4 13 REAR STEER
2. AIR OUTLET WITH SHUT OFF VALVE LOCATED ON PUMP PANEL PER ORDER
3. BATTERY CHARGER LOCATED PER ORDER
4. SUB FEED BREAKER BOX LOCATED PER ORDER
5. FIVE FULL WIDTH/DEPTH ADJUSTABLE SHELVES WITH SIDES LOCATED PER ORDER
6. ONE ADJUSTABLE SLIDE-OUT TRAY WITH SIDES LOCATED PER ORDER
7. FOUR PAC TRAC EQUIPMENT MOUNTING SYSTEMS ON THE REAR WALL LOCATED PER ORDER
8. VERTICAL PARTITION HOSE STORAGE SLOTS LOCATED PER ORDER
9. THREE HORIZONTAL EQUIPMENT MOUNTING TRACKS LOCATED PER ORDER
10. FOUR ZIANTAC AIR BOTTLE BRACKETS LOCATED PER ORDER

				Pierce MANUFACTURING INC.		JOB NO.	38010
						SCALE	1:24
						DATE	
REV	DATE	BY	CH	ENFORCER	TITLE	DRAWN BY	SHEET NO.
13MAR24		BST	JLL		CHASSIS DATA	BST	10MAY22
15FEB24		BST	JLL		MAKE	PHD	11MAY22
11SEP23		BST	JLL		PIERCE		
17AUG23		KMH	JLL		MODEL		
22JUN23		BST	JLL				
					DWG NO.		

Pierce MANUFACTURING INC.

JOB NO. 38010
01-02

SCALE 1:24
DATE

TITLE 1250-D-500P, 136" PUMPER BODY, FH, 52" SIDE CONTROL LADDERS BETWEEN TANK AND BODY, DELUGE
FOR CAMBRIDGE FIRE DEPARTMENT
CAMBRIDGE, MA

DWG NO. 38010AD

SHEET NO. D
SHEET 1 OF 1