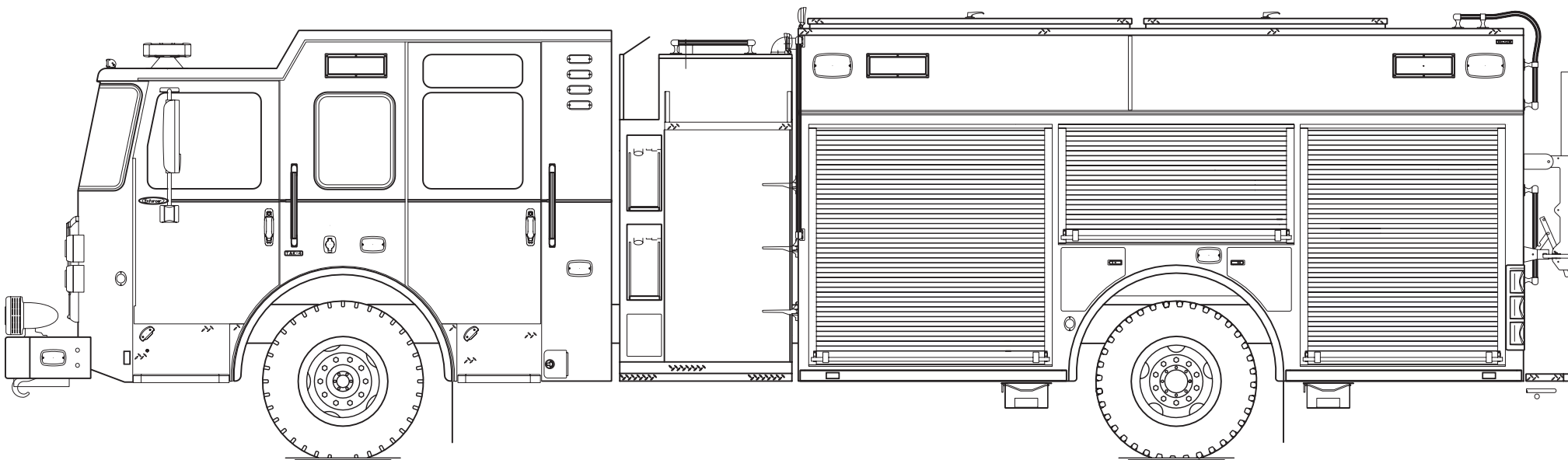




PERFORM. LIKE NO OTHER.™

Enforcer™ Heavy-Duty Rescue Pumper

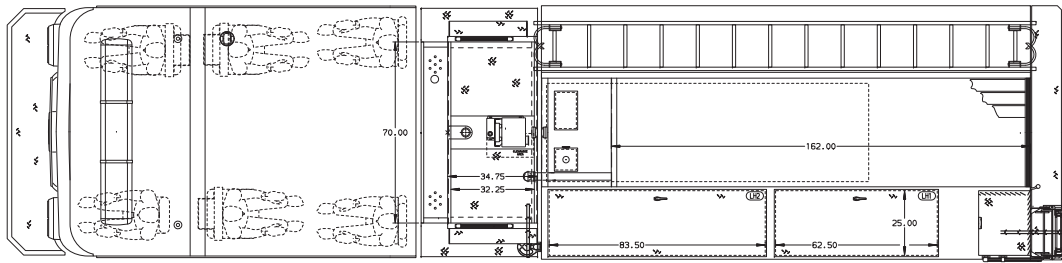
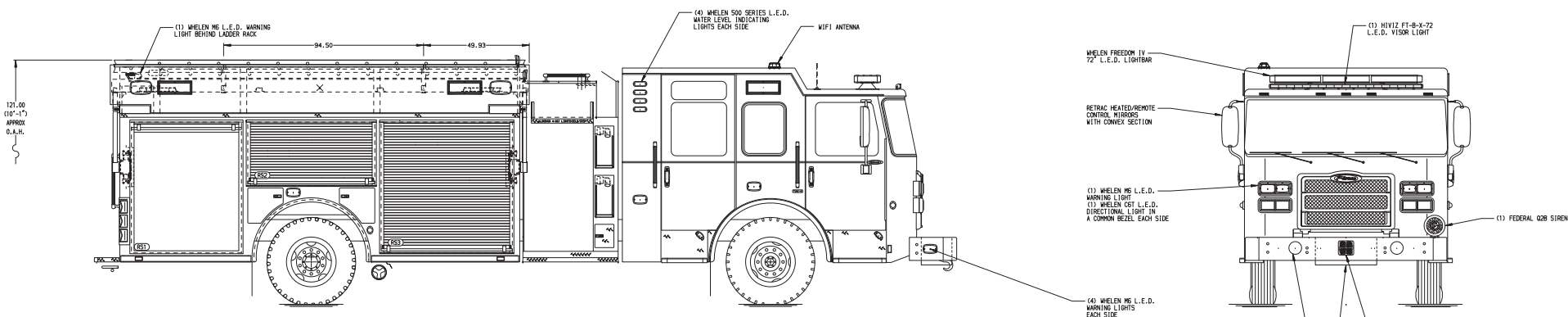


Chassis

Chassis	70" Enforcer™ cab w/10" raised roof
Seating Capacity	6
Overall Height	10' 1"
Overall Length	34'
GVW Rating	50,500 lb
Safety	Side Roll and Frontal Impact Protection
Front Axle	TAK-4® Independent Front Suspension , 19,500 lb
Rear Axle	Dana S30-190, 31,000 lb
Engine	PACCAR MX13, 510 hp, 1,850 lb-ft
Electrical System	Command Zone™ Advanced Electronics System

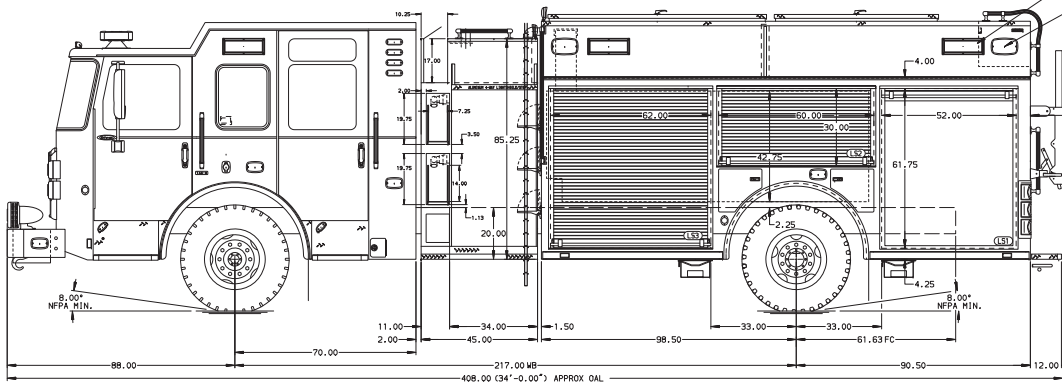
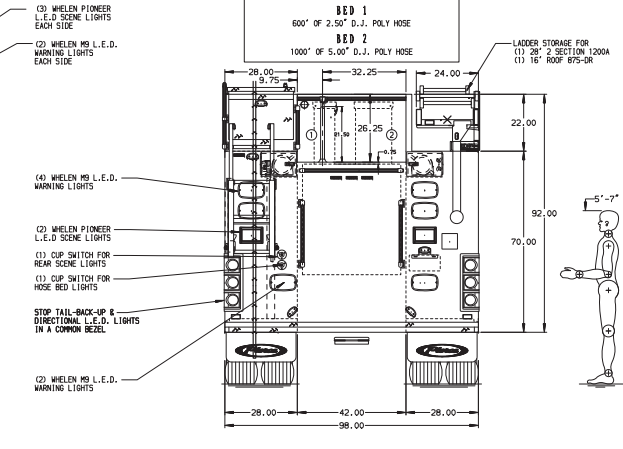
Body

Material	Aluminum
Shelving	Adjustable, up to 500 lb
Doors	Rollup
Pump	Waterous, 1,500 gpm
Tank	750 gallons
Pump Panel	Pierce® Control Zone™ 34" pump panel w/ speedlay module
Foam System	Husky™ 3 Foam System
Foam Cell	20 gallons



BODY Pumper, HESB, Aluminum	WATER TANK 750 Gallon Poly Water Tank
COMPT, LEFT SIDE 189" RollUp Full Height & Depth Front & Rear	Foam System Husky 3 Single Agent Foam System
COMPT, RIGHT SIDE 189" RollUp Full Height & Depth Front & Rear	Foam Cell 20 Gallon Foam Cell, Not Reduced Water
COMPT, REAR Storage Area, Transverse Over Frame w/Tailboard	

HOSEBED CAPACITY



SIDE ROLL AND FRONTAL IMPACT PROTECTION

NOTE
DIMENSIONS SHOWN ARE APPROXIMATE AND ARE SUBJECT TO MINOR DEVIATIONS AS MAY OCCUR OR BE NECESSARY IN CONSTRUCTION.
MINOR DETAILS NOT SHOWN.

- ONE 1.50 OUTLET WITH 2.00 PIPING AND SKEWEL LOCATED IN CENTER BUMPER TRAY
- SHOULDER RECEIPTABLE WITH RUSHWAL SUPER AUTO-DETECT LOCATED ON DRIVER SIDE OF THE CAB
- AIR INLET WITH DISCONNECT COUPLING IN THE DRIVER SIDE STEPMILL
- BATTERY CHARGER LOCATED BEHIND DRIVER'S SEAT
- BATTERY CHARGE INDICATOR LOCATED ON THE DRIVER SIDE THROUGH WINDOW DISPLAY
- THREE ADJUSTABLE SHELVES LOCATED PER SHOP ORDER
- ONE ADJUSTABLE FLAT TOP SHELF LOCATED PER SHOP ORDER
- ONE 2.00-OUT 2-ARM TRAYS LOCATED PER SHOP ORDER
- ONE TILT/SLIDE-OUT TRAY LOCATED PER SHOP ORDER
- TWO FLOOR MOUNTED SLIDE-OUT TRAYS LOCATED PER SHOP ORDER
- ONE CREECH LOCATED PER SHOP ORDER
- THREE SLIDE-OUT TOOLBOARDS LOCATED PER SHOP ORDER
- TWO SKIVING-OUT TOOLBOARDS LOCATED PER SHOP ORDER
- ONE SLIDE-OUT 2-ARM TOOLBOARD LOCATED PER SHOP ORDER
- ONE SPECIAL HEIGHT VERTICAL PARTITION LOCATED PER SHOP ORDER
- TWO VERTICAL PARTITIONS LOCATED PER SHOP ORDER
- TWO BASK WALL MOUNTED PERGARDNS LOCATED PER SHOP ORDER
- LITTLE 6" ANT LADDER LOCATED PER SHOP ORDER

CUSTOMER APPROVAL				Pierce MANUFACTURING INC.		JOB NO.	41242
APPROVED BY:				TITLE		SCALE	DATE
DATE:				FOR		DRAWN BY	29AUG23
REV				MODEL		CHECKED BY	01SEP23
250C123	AMI	THS	CH	DWG NO.		SHEET SIZE	SHEET NO.
				41242AD-SH1		D	1 of 2