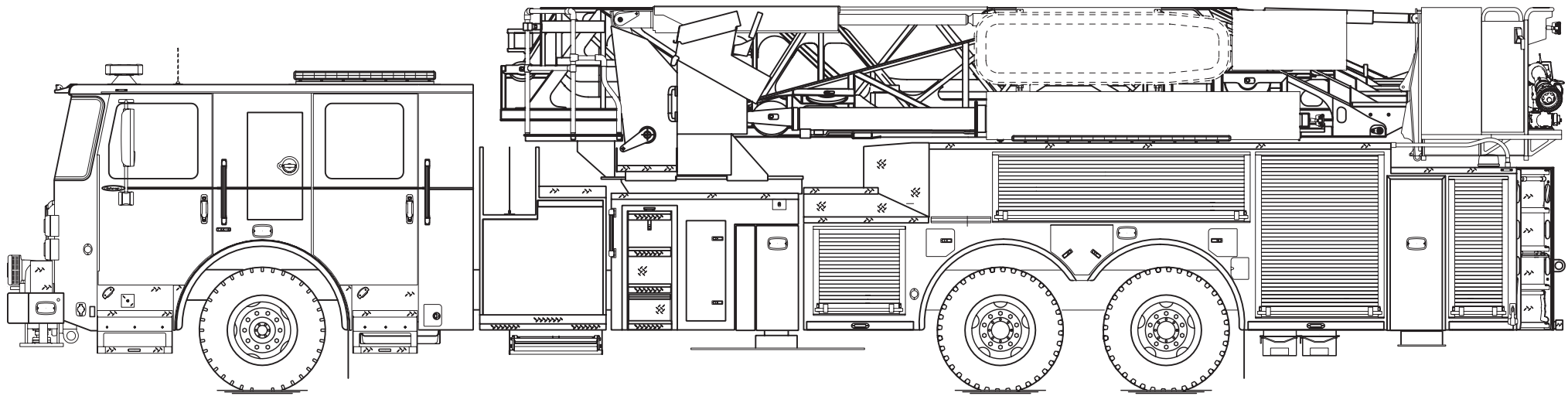




PERFORM. LIKE NO OTHER.™

Lawrenceburg Fire Department, KY Enforcer™ Ascendant® 100' Heavy-Duty Aerial Tower



Chassis

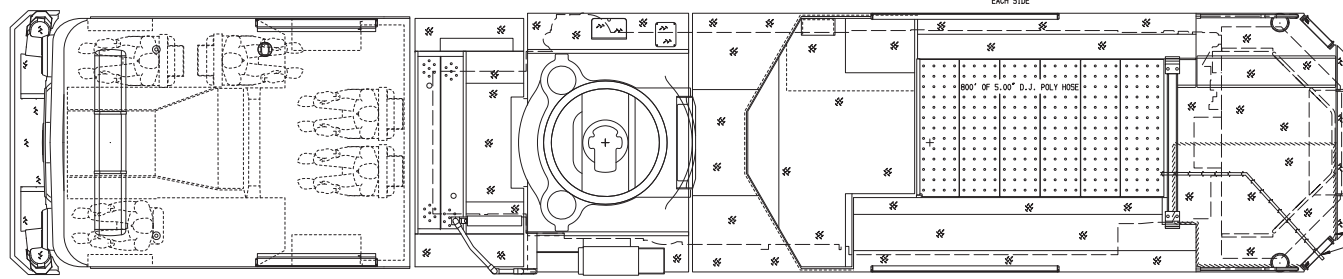
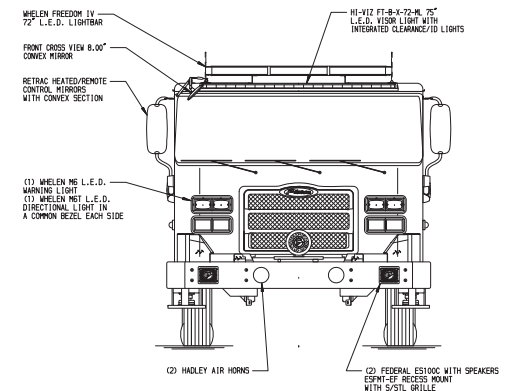
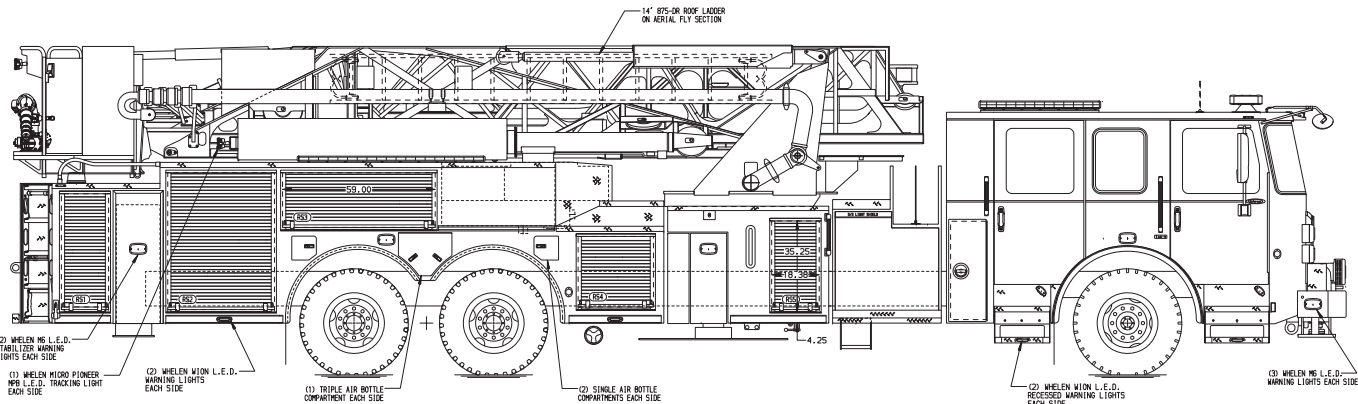
Chassis	70" Enforcer cab
Seating Capacity	5
Overall Height	10' 10"
Overall Length	43' 0.25"
GVW Rating	78,000 lb
Safety	Side Roll and Frontal Impact Protection
Front Axle	TAK-4® Independent Front Suspension , 24,000 lb
Rear Axle	Meritor RT52-185, 54,000 lb
Engine	PACCAR MX13 , 510 hp, 1850 lb-ft
Electrical System	Command Zone™ Advanced Electronics System

Body

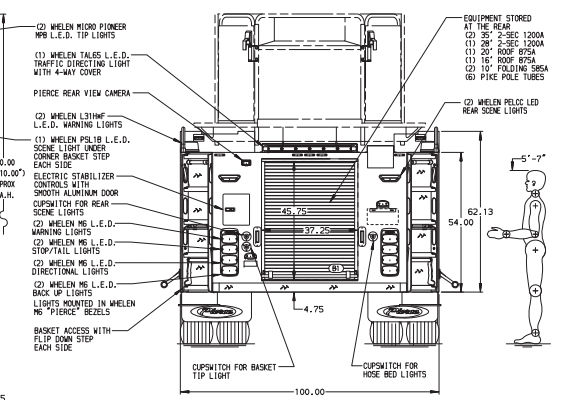
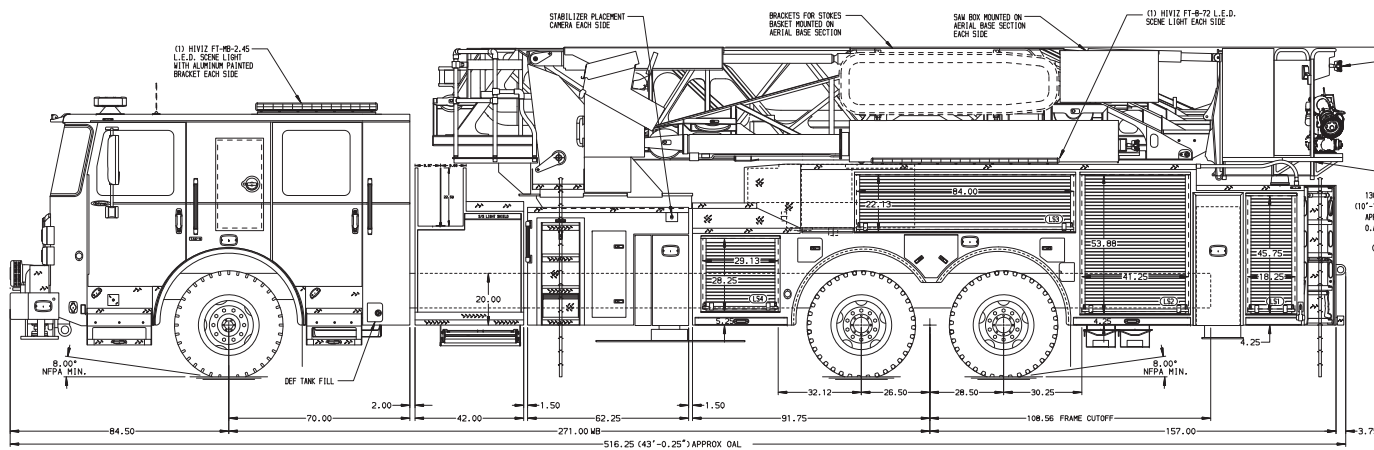
Material	Aluminum
Shelving	Adjustable, up to 500 lb
Doors	Rollup
Pump	Waterous, 2,000 gpm
Tank	300 gallons
Pump Panel	Pierce® Control Zone™ 42" pump panel

Aerial Device

Device	Ascendant 100' Heavy-Duty Aerial Tower
Reach	100' vertical 93' horizontal
Tip Load	1,000 lb dry 500 lb wet
Equipment	150 lb allowance
Flow Rate	2,000 gpm
Stabilizers	1 set, 18' spread 4 down-jacks



BODY 100' Ascendant Aerial Tower Alum Body COMPT, DRIVER SIDE Full Height Rollup Doors COMPT, PASSENGER SIDE Full Height Rollup Doors	WATER TANK 300 Gallon Poly Water Tank Foam System Foam System Not Required Foam Cell Foam Cell Not Required
---	---



CHASSIS Enforcer Chassis 510 HP Paccor MX13 Engine	CAB 7000 Enforcer Cab 15\"/>
---	---

AXLE, FRONT, CUSTON 24,000 lb TAK-4 Axle AXLE, REAR 54,000 lb Meritor Axle	TRANSMISSION Allison 6th Gen, 4500 EVS P	PUMPHOUSE 42\"/>
---	--	----------------------------

CUSTOMER APPROVAL DATE: _____ APPROVED BY: _____	SAFETY Side Roll and Frontal Impact Protection	CHASSIS DATA TITLE: 100' ASCENDANT AERIAL TOWER AND BODY ASSEMBLY MAKE: ATLANTIC EMERGENCY SOLUTIONS FOR: MANASSAS, VA MODEL: _____ DWG NO.: 41331AD	JOB NO. 41331 SCALE: 1:24 DATE: 16AUG23 DRAWN BY: ANZ CHECKED BY: THS SHEET NO.: 1 OF 1
---	--	--	---

NOTE
DIMENSIONS SHOWN ARE APPROXIMATE AND ARE SUBJECT TO MINOR DEVIATIONS AS MAY OCCUR OR BE NECESSARY IN CONSTRUCTION.
MINOR DETAILS NOT SHOWN.

- SHOULDER RECEPTACLE WITH KUSSMANN SUPER AUTO-EJECT LOCATED ON DRIVER SIDE FRONT CORNER OF THE CAB
- AIR INLET WITH DISCONNECT COUPLING IN A RECESSED ALUMINUM THEATREPLATE BOX IN THE DRIVER SIDE STEPMILL
- BATTERY CHARGER LOCATED IN CAB BEHIND DRIVER'S SEAT
- 51A ADJUSTABLE FOLD DOWN/UP/FLIP DRIVER'S SEAT BRISER
- FOUR SLIDE-OUT FLOOR MOUNTED TRAYS IN COMPARTMENTS PER ORDER
- DUAL LIGHT STRIPS LOCKED IN COMPARTMENTS PER ORDER
- NON-INSULATED AERIAL PEDESTAL
- 32\"/>