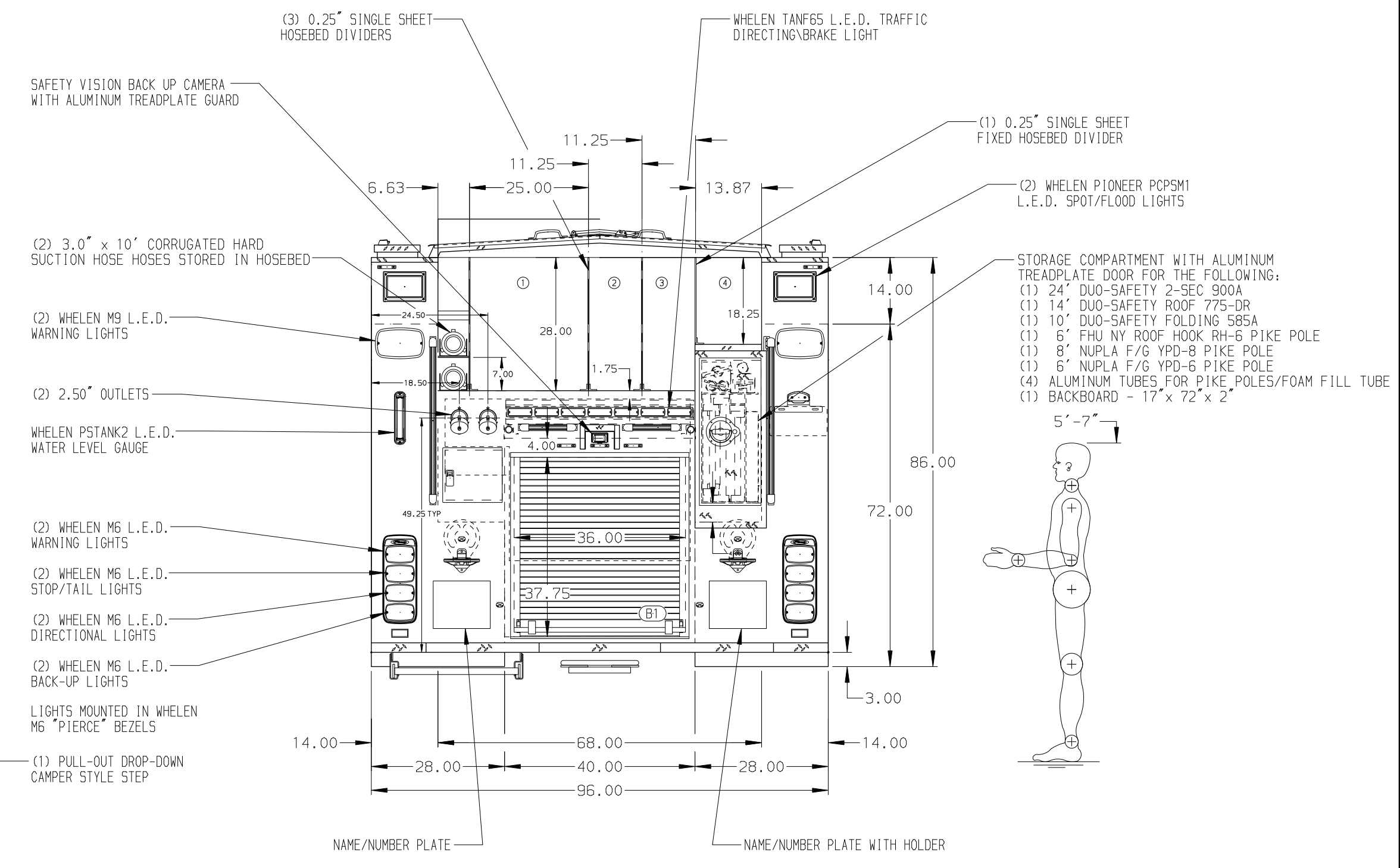


- HOSEBED CAPACITIES**
- 800' OF 5.00" RUBBER
  - 400' OF 3.00" D.J. POLY HOSE
  - 400' OF 3.00" D.J. POLY HOSE
  - 600' OF 2.50" ANGUS HI COMBAT II HOSE



ALUMINUM BODY    MAXIMUM O.A.L. 376.00"    MAXIMUM O.A.H. 117.00"    SIDE ROLL AND FRONTAL IMPACT PROTECTION

**NOTE**  
DIMENSIONS SHOWN ARE APPROXIMATE AND ARE SUBJECT TO MINOR DEVIATIONS AS MAY OCCUR OR BE NECESSARY IN CONSTRUCTION. MINOR DETAILS NOT SHOWN.

- ANCHOR PLATE FOR NEDERMAN EXHAUST SYSTEM HOSE LOCATION TBD
- DEF TANK MOUNTED UNDER CAB ON THE DRIVER'S SIDE
- BATTERY CHARGER LOCATED PER SHOP ORDER
- L.E.D. LIGHT STRIPS LOCATED ON HOSE BED COVER PER SHOP ORDER
- HUSKY 12 DUAL AGENT FOAM SYSTEM

REV	DATE	BY	CH	REV	DATE	BY	CH	ENFORCER
				02JUN21	JRO	BSE		CHASSIS DATA
				27MAY21	LST	BSE		MAKE
				24MAY21	LST	BSE		PIERCE
				21MAY21	JRO	BSE		MODEL
				02MAR21	JRO	BSE		

		JOB NO.	35527 01 - 03
		SCALE	1:24
<b>MANUFACTURING INC.</b>		TITLE	1500-500 WATER/30 & 20 FOAM, 152" BODY, SIDE CONTROL LADDERS BTWN TANK & SS, CROSSLAYS, BACKBOARD, DELUGE
		FOR	SAN JOSE FIRE DEPARTMENT SAN JOSE, CALIFORNIA
DWG NO. 35527AD-SH1		DRAWN BY	JRO
		CHECKED BY	BSE
SHEET NO. D		SHEET SIZE	DATE
		DATE	17FEB21
1 OF 2		SHEET NO.	23FEB21
		DATE	