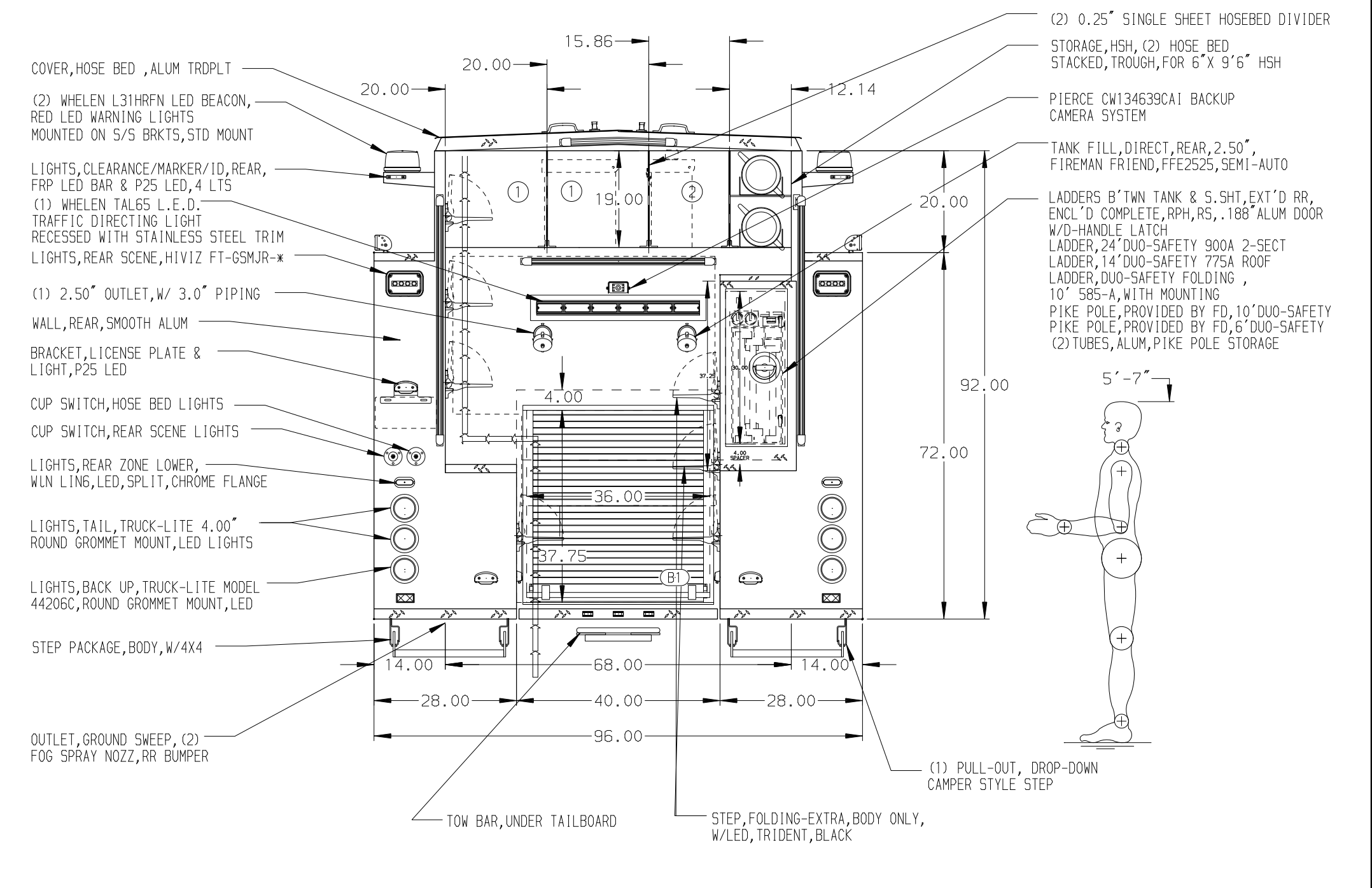
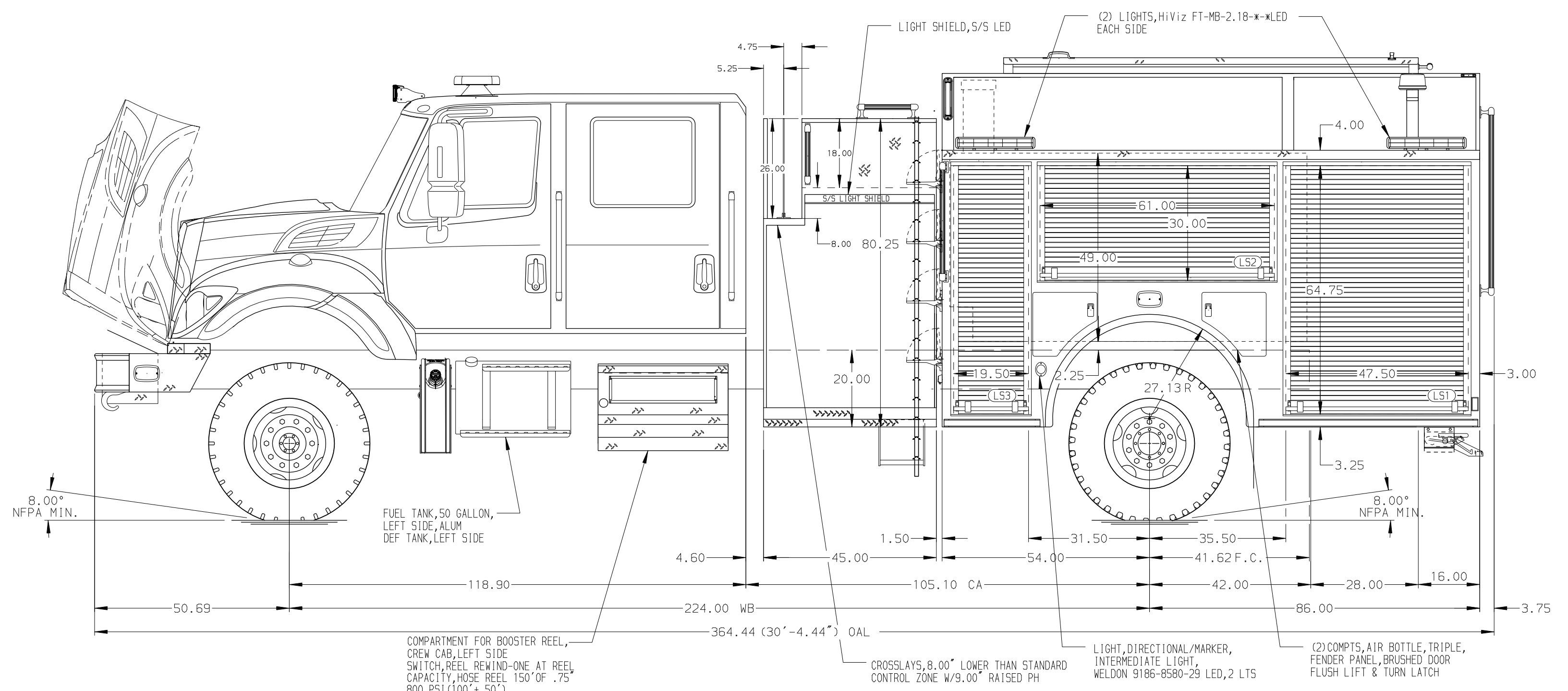


HOSEBED CAPACITIES

① 1500' OF 2.50" D.J. POLY HOSE

② 400' OF 1.50" D.J. POLY HOSE



ALUMINUM BODY (MAXIMUM O.A.L. (30' 4.50") - (364.50"))

NOTE
DIMENSIONS SHOWN ARE APPROXIMATE AND ARE SUBJECT TO MINOR DEVIATIONS AS MAY OCCUR OR BE NECESSARY IN CONSTRUCTION. MINOR DETAILS NOT SHOWN.

				Pierce MANUFACTURING INC.		JOB NO.	35909
						SCALE	1:24
						DATE	
						DRAWN BY	JLA
						CHECKED BY	RWI
						SHEET SIZE	SHEET NO.
						D	1 OF 1
REV	DATE	BY	CH	CHASSIS DATA	TITLE	1250-D-750P W/30G FOAM, 140", FULL HEIGHT, FDLER, 45" SIDE CNTRL, (2) 1.5" X-LAYS, DELUGE, FOAMPRO 1600	
	16AUG21	JAF	AJA	MAKE	FOR	NORTH LINCOLN FIRE & RESCUE DIST. 1 LINCOLN CITY, OREGON	
	08JUL21	RHU	AJA	IHC	DWG NO.	35909AD	
	27APR21	JLA	RWI	MODEL HV507 4X4			