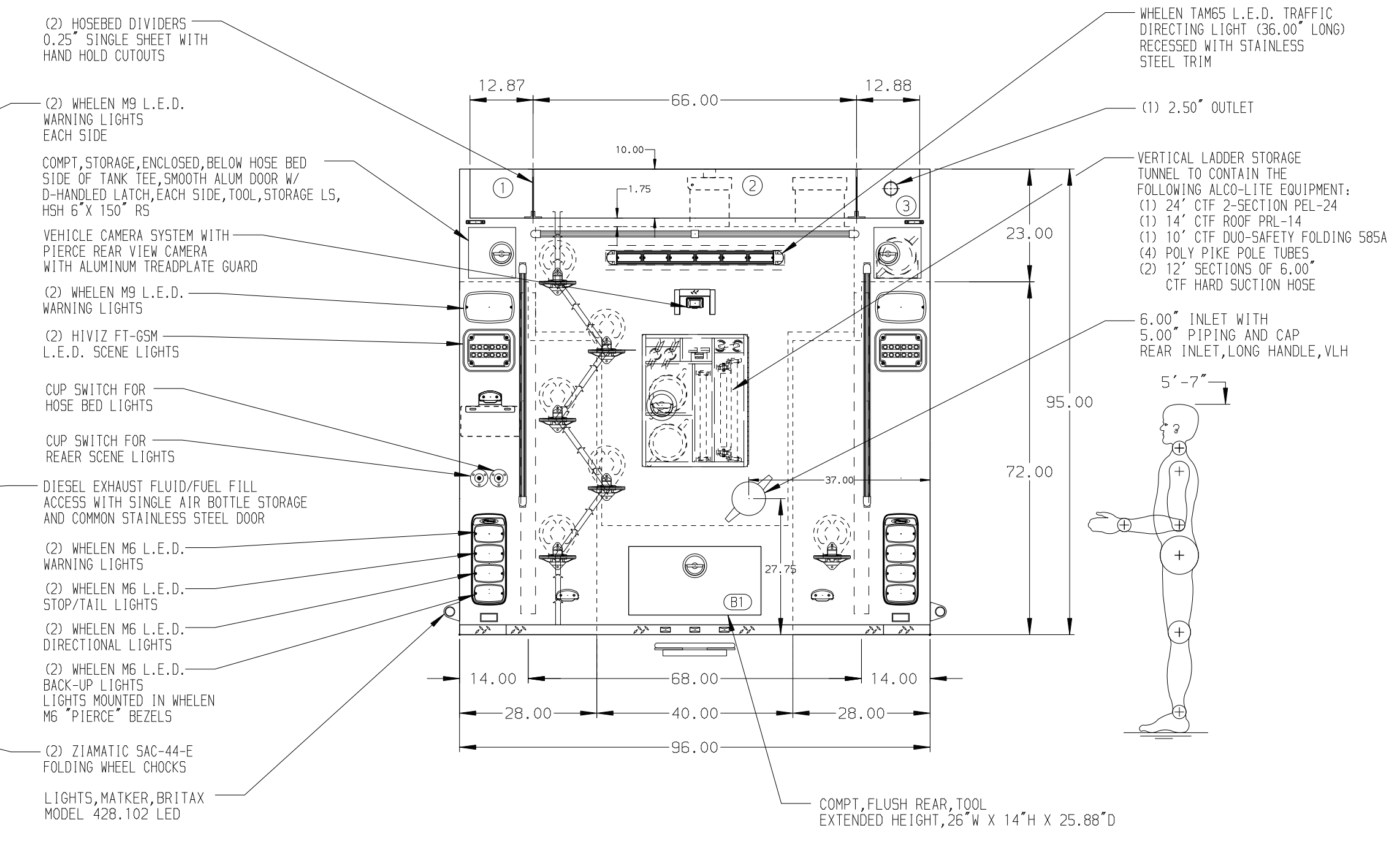


- HOSEBED CAPACITIES
- ① 200' OF 3.00" D.J. HOSE
 - ② 1000' OF 5.00" D.J. HOSE
 - ③ 200' OF 3.00" D.J. HOSE



ALUMINUM BODY MAXIMUM O.A.L. 402" TARGET O.A.H. 119"

NOTE
 DIMENSIONS SHOWN ARE APPROXIMATE AND ARE SUBJECT TO MINOR DEVIATIONS AS MAY OCCUR OR BE NECESSARY IN CONSTRUCTION. MINOR DETAILS NOT SHOWN.

				Pierce MANUFACTURING INC.		JOB NO.	35946		
						SCALE	1:24		
						DATE			
REV	DATE	BY	CH	SABER FR	TITLE	1750-D-1470P W/30G FOAM, 184", FULL HEIGHT, FULL DEPTH (4) X-LAYS, DELUGE, CAFS 200	DRAWN BY	JWO	11DEC20
					FOR	LIBERTY TOWNSHIP FIRE COMPANY DANVILLE, PENNSYLVANIA	CHECKED BY	CDU	14DEC20
					DWG NO.	35946AD	SHEET SIZE	D	SHEET NO.
									1 OF 1