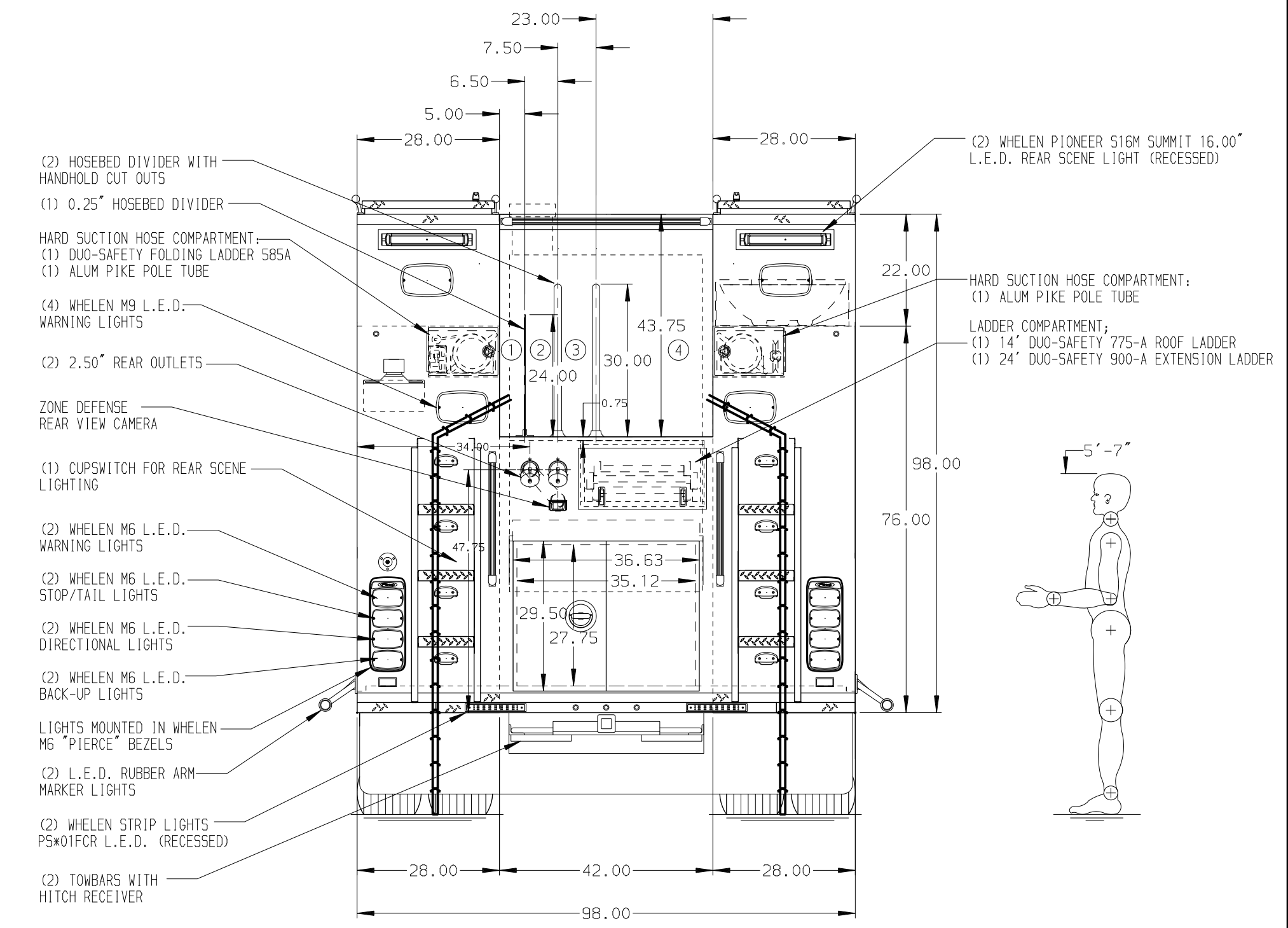


HOSEBED CAPACITIES

1	300' OF 2.00" D.J. POLY HOSE
2	300' OF 2.50" D.J. POLY HOSE
3	300' OF 3.00" D.J. POLY HOSE
4	1100' OF 4.00" D.J. POLY HOSE



**ALUMINUM BODY**

**SIDE ROLL AND FRONTAL IMPACT PROTECTION**

**NOTE**  
DIMENSIONS SHOWN ARE APPROXIMATE AND ARE SUBJECT TO MINOR DEVIATIONS AS MAY OCCUR OR BE NECESSARY IN CONSTRUCTION. MINOR DETAILS NOT SHOWN.

1. DEF TANK MOUNTED UNDER CAB ON THE DRIVER'S SIDE
2. (2) PIKE POLE TUBES LOCATED IN TRANSVERSE COMPARTMENT
3. BATTERY CHARGE INDICATOR LOCATED NEAR DRIVER'S SEAT RISER WITH BRACKET
4. L.E.D. DUAL LIGHT STRIPS LOCATED IN HOSE BED PER SHOP ORDER

**Pierce MANUFACTURING INC.**

JOB NO.	36018	
SCALE	DATE	
1:24		
DRAWN BY	JRC	23APR21
CHECKED BY	CZA	27APR21
SHEET SIZE	SHEET NO.	
D	1 OF 2	

TITLE: 1500-D-750 GAL POLY, 189" 76" HIGH 3RD GEN HDRP BODY  
 FOR: ROUND HILL COMMUNITY FIRE & RESCUE, INC.  
 WINCHESTER, VIRGINIA  
 DWG NO. 36018AD-SH1

				CHASSIS DATA	
				MAKE	PIERCE
				MODEL	
REV	DATE	BY	CH	VELOCITY FR	
04JAN22	JRC	AZA			
05MAY21	JRC	CZA			