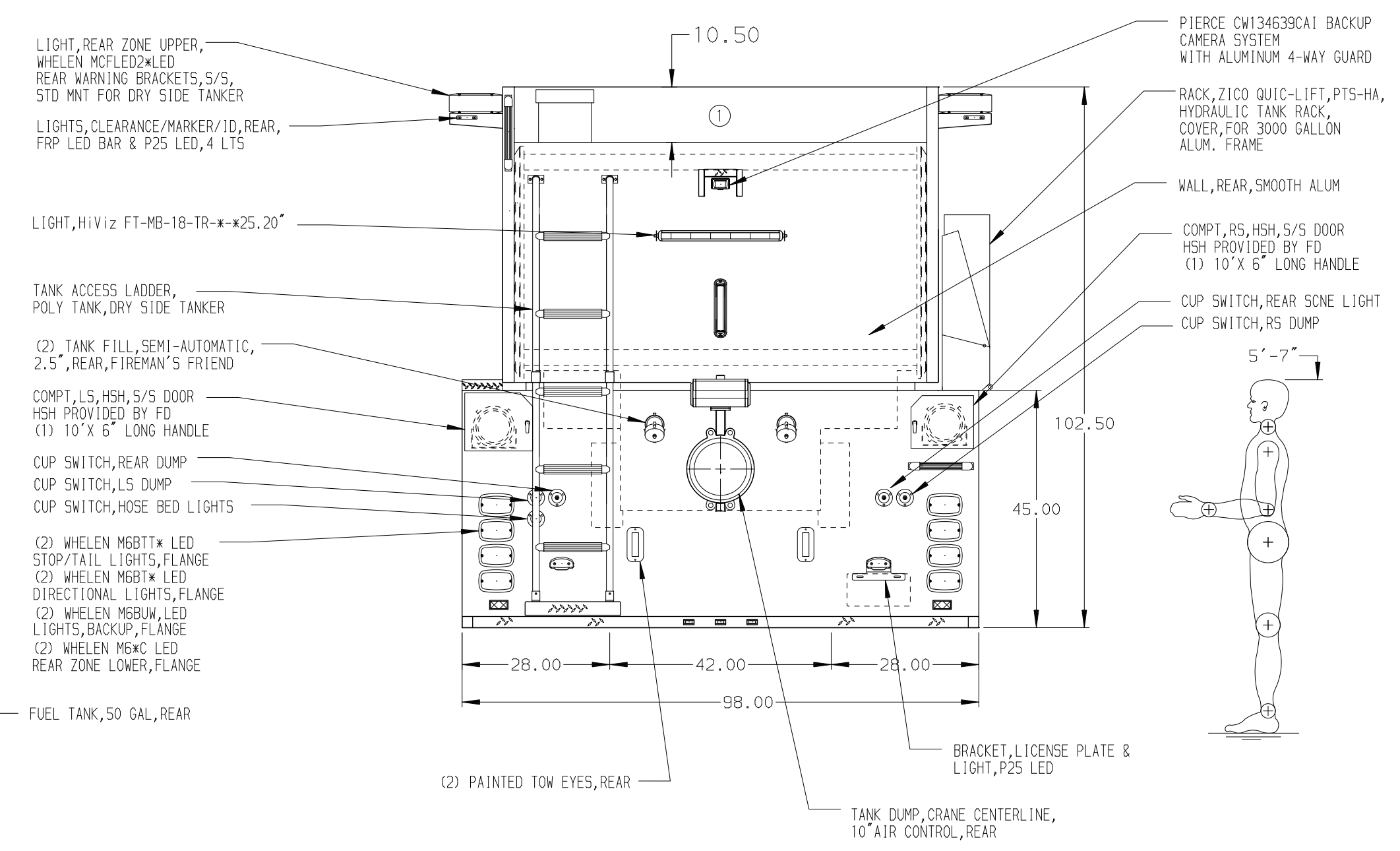


HOSEBED CAPACITIES  
① 200' OF 2.50" D.J. POLY HOSE



STAINLESS STEEL BODY

NOTE  
DIMENSIONS SHOWN ARE APPROXIMATE AND ARE SUBJECT TO MINOR DEVIATIONS AS MAY OCCUR OR BE NECESSARY IN CONSTRUCTION. MINOR DETAILS NOT SHOWN.

REV	DATE	BY	CH	T800	CHASSIS DATA	TITLE	JOB NO.
22	JUN21	JAF	GSC	MAKE	1250-D-3000 POLY, 182" DRYSIDE BODY, SIDE/REAR DUMPS	36049	
06	MAY21	JLA	GSC	KW	34" SIDE CONTROL, (2) 1.50" CROSSLAYS	SCALE 1:24 DATE	
17	MAR21	JLA	RWI	MODEL	ROBERT FULTON FIRE COMPANY	DRAWN BY 09MAR21	
					PEACH BOTTOM, PENNSYLVANIA	CHECKED BY 10MAR21	
					DWG NO. 36049AD	SHEET SIZE SHEET NO.	
						D 1 OF 1	