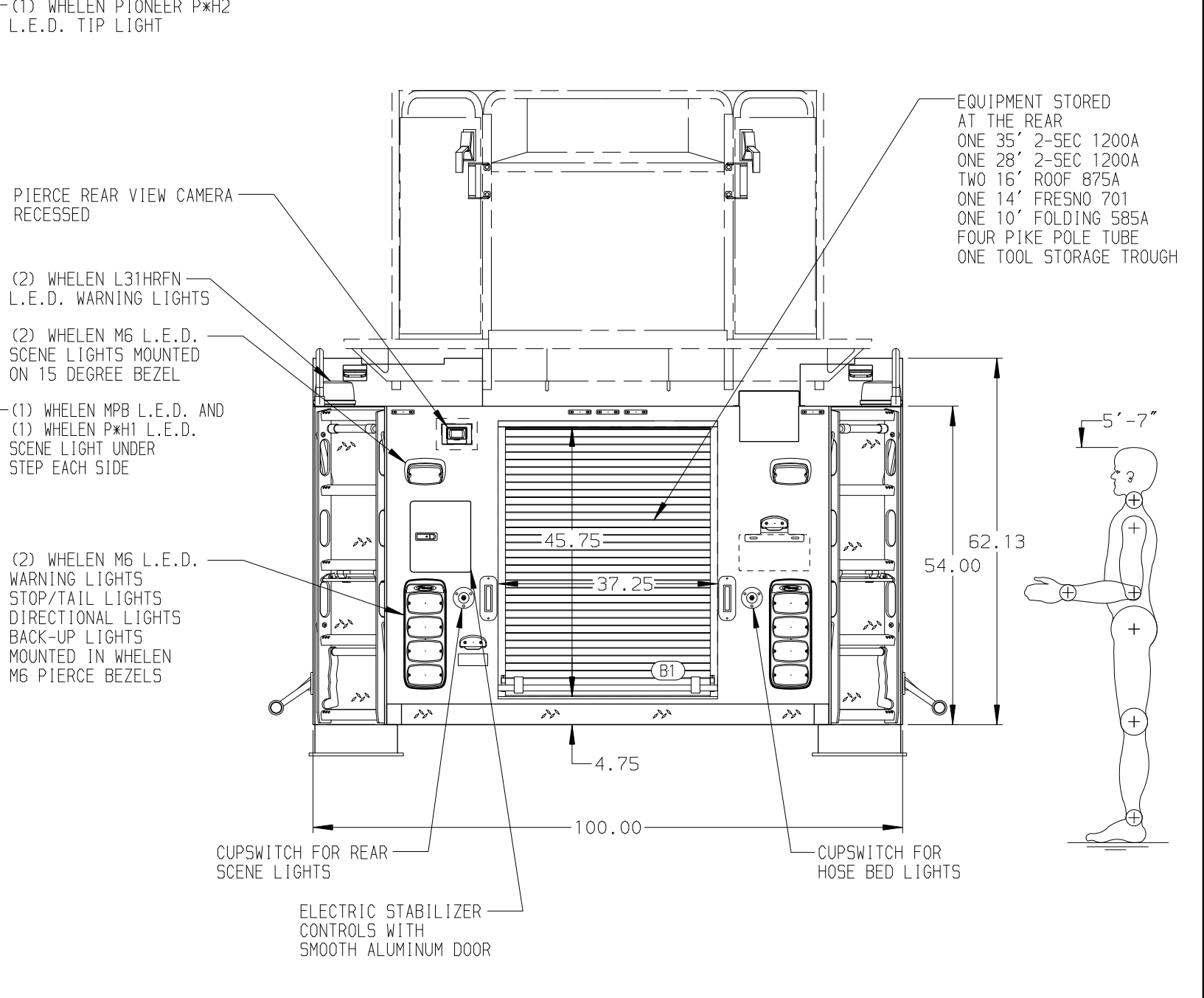
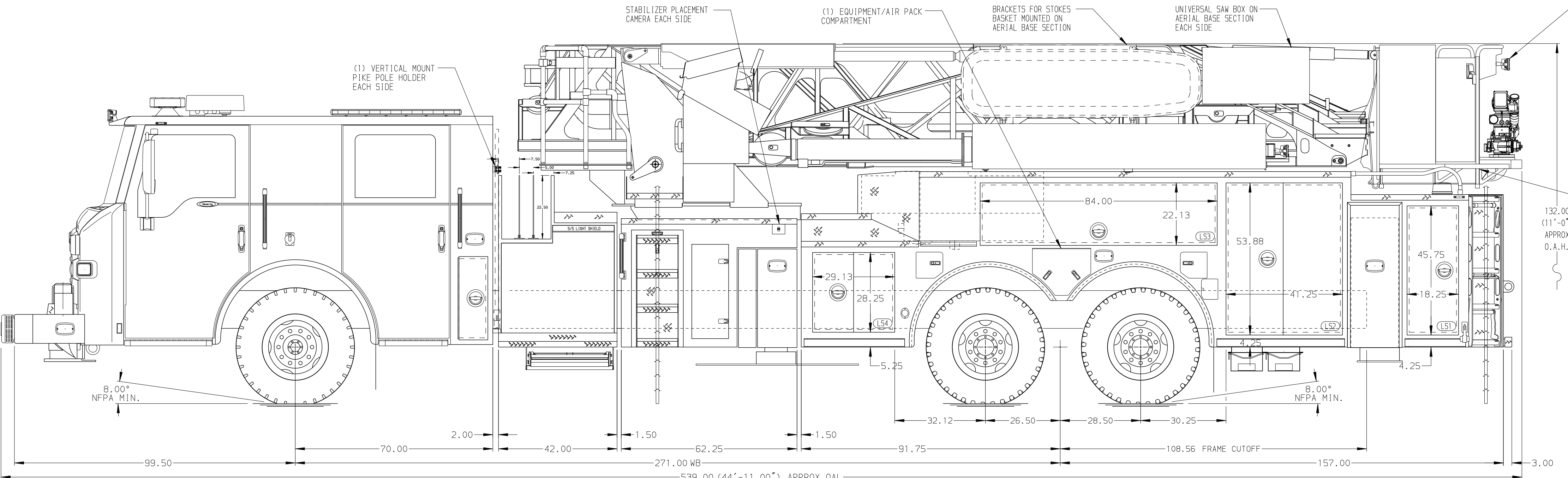


<b>BODY</b> 100' Ascendant Aerial Tower Alum Body COMPT, LEFT SIDE Full Height Lap Doors COMPT, RIGHT SIDE Full Height Lap Doors	<b>WATER TANK</b> 300 Gallon Poly Water Tank Foam System Foam System Not Required Foam Cell Foam Cell Not Required
---	---



<b>CHASSIS</b> Velocity Chassis (Big Block) <b>ENGINE</b> 510 HP Paccar MX13 Engine	<b>CAB</b> 7000 Velocity FR Cab <b>BUMPER</b> 21\" (10\" Extended Painted Steel	<b>AXLE, FRONT, CUSTOM</b> 24,000 Lb Dana Axle <b>AXLE, REAR</b> 52,000 Lb Meritor Axle	<b>TRANSMISSION</b> Allison 5th Gen, 4500 EV5 P	<b>PUMPHOUSE</b> 42\" Control Zone Side Mount PUMP 1500 GPM Hale D5D	<b>CROSSLAYS, 1.50\"</b> (2), 200\" of 1.75\" Mercedes AquaFlow <b>CROSSLAYS, 2.50\"</b> (1), 200\" 2.50\" Mercedes KrakenEX0	<b>SPEEDLAYS</b> SpeedLays Not Required <b>GENERATOR</b> Generator Not Required
--	--	--	--	--	--	--

<b>NOTE</b> DIMENSIONS SHOWN ARE APPROXIMATE AND ARE SUBJECT TO MINOR DEVIATIONS AS MAY OCCUR OR BE NECESSARY IN CONSTRUCTION. MINOR DETAILS NOT SHOWN.	1. 120V SHORELINE RECEPTACLE LOCATED ON DRIVER SIDE OF THE CAB 2. AIR INLET WITH DISCONNECT COUPLING IN THE DRIVER SIDE STEPWELL 3. BATTERY CHARGER LOCATED IN COMPARTMENT PER SHOP ORDER 4. BATTERY CHARGE INDICATOR LOCATED NEAR DRIVER SEAT RISER WITH BRACKET 5. FEDERAL RUMBLER-3 SPEAKER MOUNTED BEHIND FRONT BUMPER PER SHOP ORDER 6. DEF TANK MOUNTED UNDER CAB ON THE DRIVER'S SIDE 7. L.E.D. LIGHT STRIPS WITH STAINLESS STEEL PROTECTIVE COVER LOCATED IN HOSE BED 8. TWELVE ADJUSTABLE FULL WIDTH/FULL DEPTH SHELVES IN COMPARTMENTS PER SHOP ORDER 9. ONE ADJUSTABLE TILTING SLIDE-OUT TRAY IN COMPARTMENT PER SHOP ORDER 10. ONE FLOOR MOUNTED SLIDE-OUT TRAY IN COMPARTMENT PER SHOP ORDER	11. ONE VERTICAL PARTITION IN COMPARTMENT PER SHOP ORDER 12. FOUR 120V DUPLEX RECEPTACLES LOCATED PER SHOP ORDER 13. DC POWER TO AERIAL BASKET 14. BREATHING AIR TO AERIAL TIP 15. NON-RAISED AERIAL PEDESTAL 16. 3-in-1 LYFECOMBO BRACKETS AT AERIAL BASKET
--	--	---

		JOB NO.	36069
		SCALE	DATE
TITLE	100' ASCENDANT AERIAL TOWER AND BODY ASSEMBLY	DRAWN BY	TKA
FOR	NORWOOD PARK FIRE PROTECTION DISTRI	CHECKED BY	NDA
DWG NO.	36069AD	SHEET SIZE	SHEET NO.
VELOCITY		D	1 OF 1