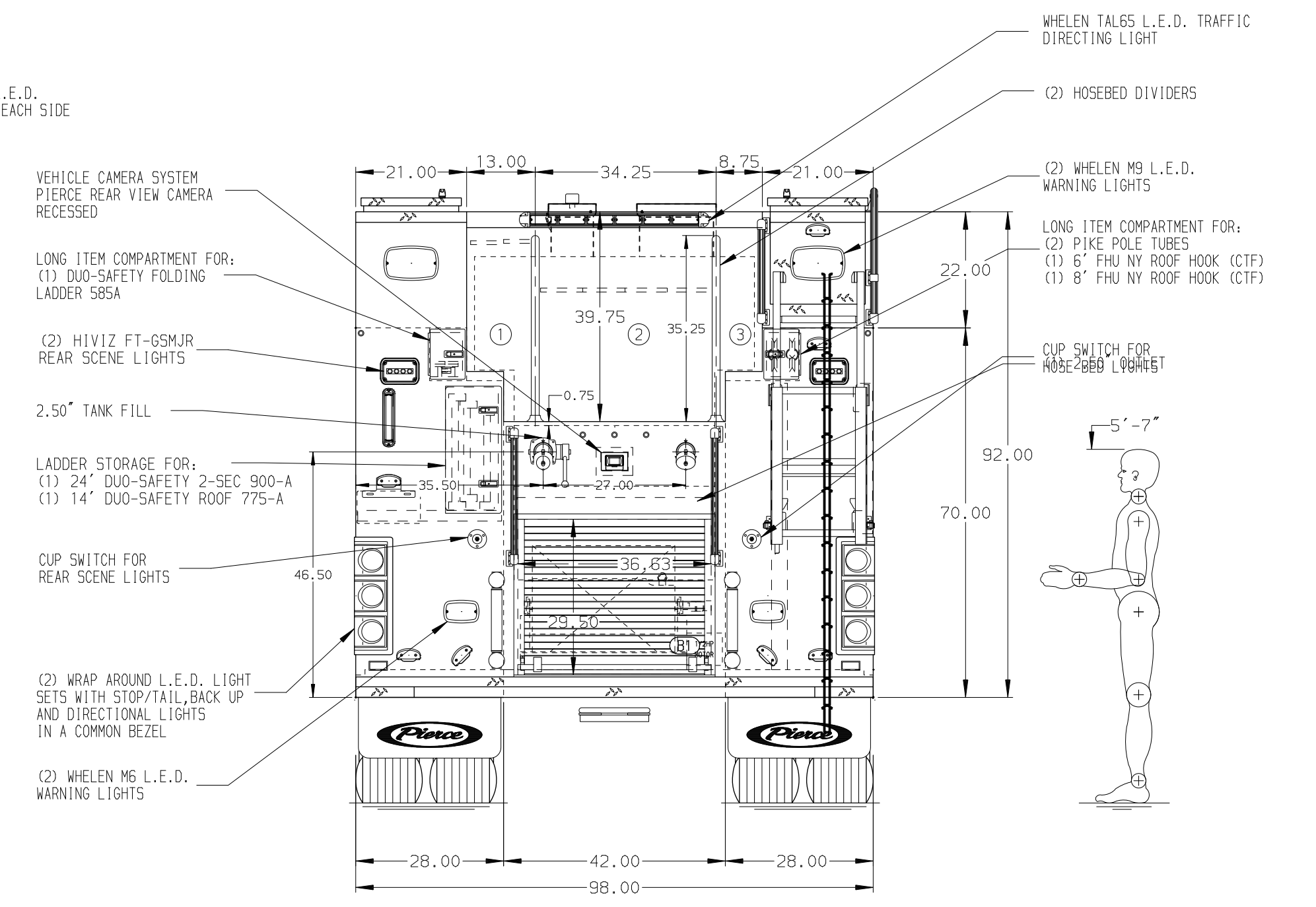
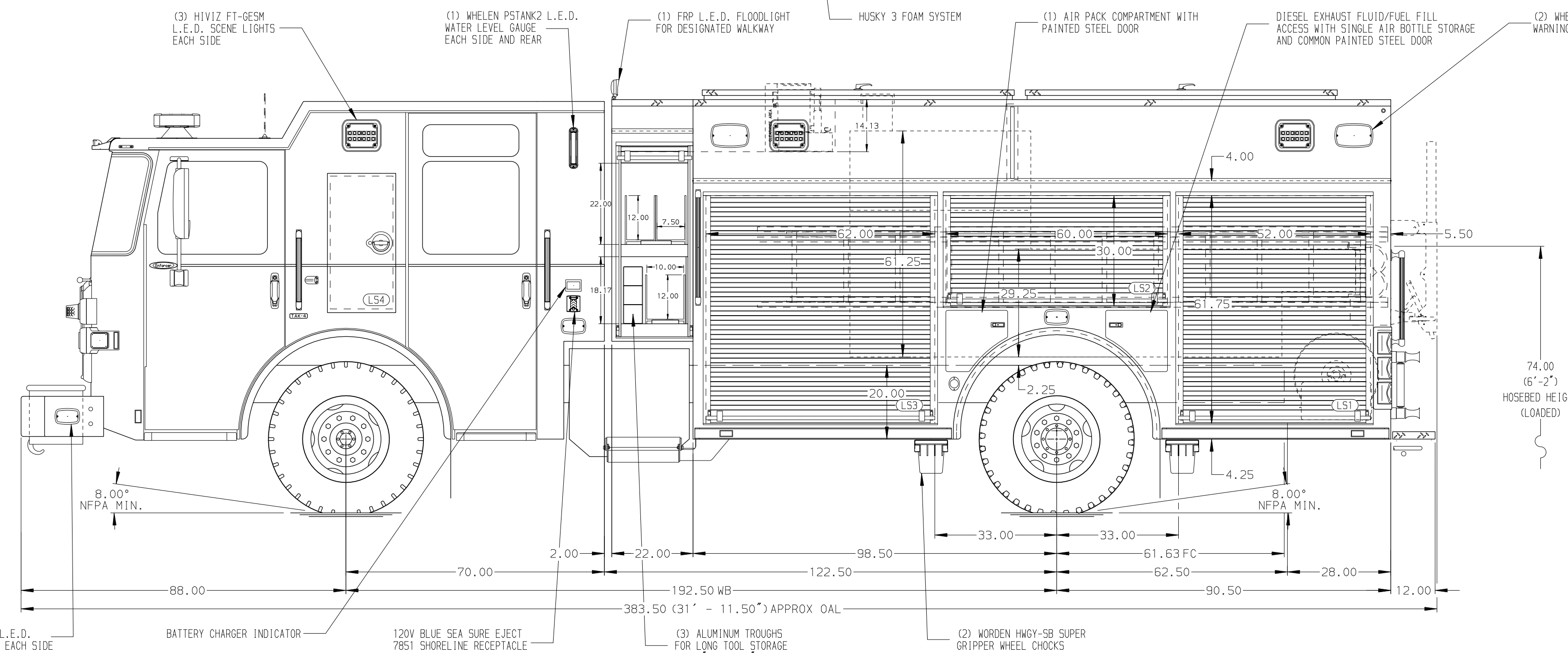


- HOSEBED CAPACITIES**
- ① - 550' OF 3.00" D.J. POLY HOSE
 - ② - 1000' OF 5.00" D.J. POLY HOSE
 - ③ - BUNDLES OF 1.75" D.J. POLY HOSE



ALUMINUM BODY

SIDE ROLL AND FRONTAL IMPACT PROTECTION

NOTE
DIMENSIONS SHOWN ARE APPROXIMATE AND ARE SUBJECT TO MINOR DEVIATIONS AS MAY OCCUR OR BE NECESSARY IN CONSTRUCTION. MINOR DETAILS NOT SHOWN.

1. DUAL L.E.D. LIGHT STRIPS LOCATED IN HOSE BED
2. ELASTIC PULL STRAP ON DOOR ON CROSSLAY MODULE DOORS
3. TWO FULL WIDTH/DEPTH ADJUSTABLE SHELVES IN COMPARTMENT LS1, ONE IN LS3, RS1, RS2 AND RS3
4. ONE FLOOR MOUNTED SLIDE-OUT TRAY IN COMPARTMENT LS1 AND RS1
5. SLIDE-OUT TOOL BOARD WITH PEGBOARD PATTERN IN COMPARTMENT RS3
6. TWO SWING-OUT ALUMINUM TOOL BOARDS IN COMPARTMENT LS2
7. RETENTION NETTING IN COMPARTMENT RS3 AND AT THE ENDS OF THE TROUGHS IN THE LOWER CROSSLAY MODULE
8. ONE SLIDE OUT TILT TRAY IN COMPARTMENT RS3
9. ONE VERTICAL PARTITION (SPECIAL HEIGHT) IN COMPARTMENT RS3
10. ALUMINUM PEGBOARD ON BACK WALL COMPARTMENT LS2, LS3 AND RS1
11. 6-SLOT AIR BAG RACK IN COMPARTMENT RS1
12. AIR INLET WITH DISCONNECT COUPLING LOCATED IN DS LOWER STEP WELL OF CAB
13. HANWAY MODEL: SBEF 34-23-24 WITH 150' OF 1.00" BOOSTER HOSE IN B1

CHASSIS DATA	TITLE	1500-D-775P, 7560 WATER W/ 25G FOAM, 189" RESCUE PUC
MAKE	FOR	(3) CROSSLAYS, BOOSTER REEL, HUSKY 3, OIL DRY HOPPER CITY OF CONVERSE FIRE & EMS CONVERSE, TEXAS
MODEL	DWG NO.	36222AD
ENFORCER	REV	

		JOB NO.	36222
		SCALE	1:24
DRAWN BY JJB		DATE	27MAY21
		CHECKED BY WKL	
SHEET SIZE D		SHEET NO.	1 OF 1