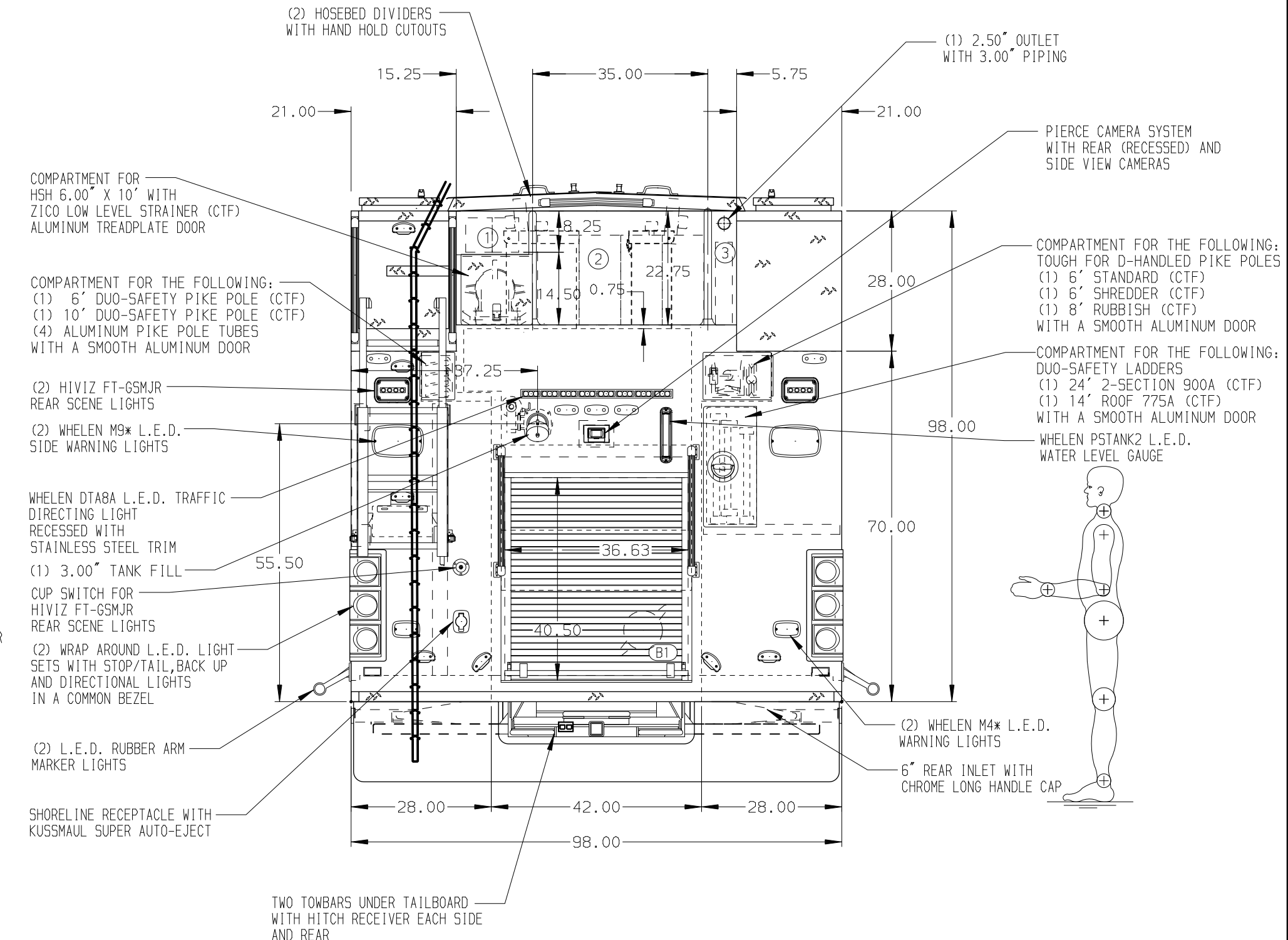


- HOSEBED CAPACITIES**
- ① 200' OF 3.00\"/>



ALUMINUM BODY

SIDE ROLL AND FRONTAL IMPACT PROTECTION

NOTE
 DIMENSIONS SHOWN ARE APPROXIMATE AND ARE SUBJECT TO MINOR DEVIATIONS AS MAY OCCUR OR BE NECESSARY IN CONSTRUCTION. MINOR DETAILS NOT SHOWN.

1. ONSPOT AUTOMATIC TIRE CHAINS TO BE PROVIDED AT REAR
2. DEF TANK MOUNTED UNDER CAB ON THE DRIVER'S SIDE
3. BATTERY CHARGER LOCATED BEHIND DRIVER'S SEAT ON TOP OF CABINET
4. BATTERY CHARGER INDICATOR AT DRIVER'S SEAT WITH BRACKET
5. DUAL L.E.D. LIGHT STRIPS IN CARGO AREA
6. L.E.D. LIGHT STRIPS IN HATCH COMPARTMENTS
7. DURA-SURF ON FLOOR OF STOKES AND LITTLE GIANT LADDER STORAGE

		JOB NO.	36261-01-02	
		SCALE	DATE	
MANUFACTURING INC.		1:24	10MAR21	
		DRAWN BY	SAM	
CHASSIS DATA		CHECKED BY	AZA	
		TITLE	1500-D-1115P, 1000G WATER, 40G & 75G FOAM, 214\"/>	
FOR		SHEET SIZE	D	
		DATE	10MAR21	
MODEL		SHEET NO.	1 OF 2	
		REV	DATE	BY
DWG NO.		36261AD-SH1		