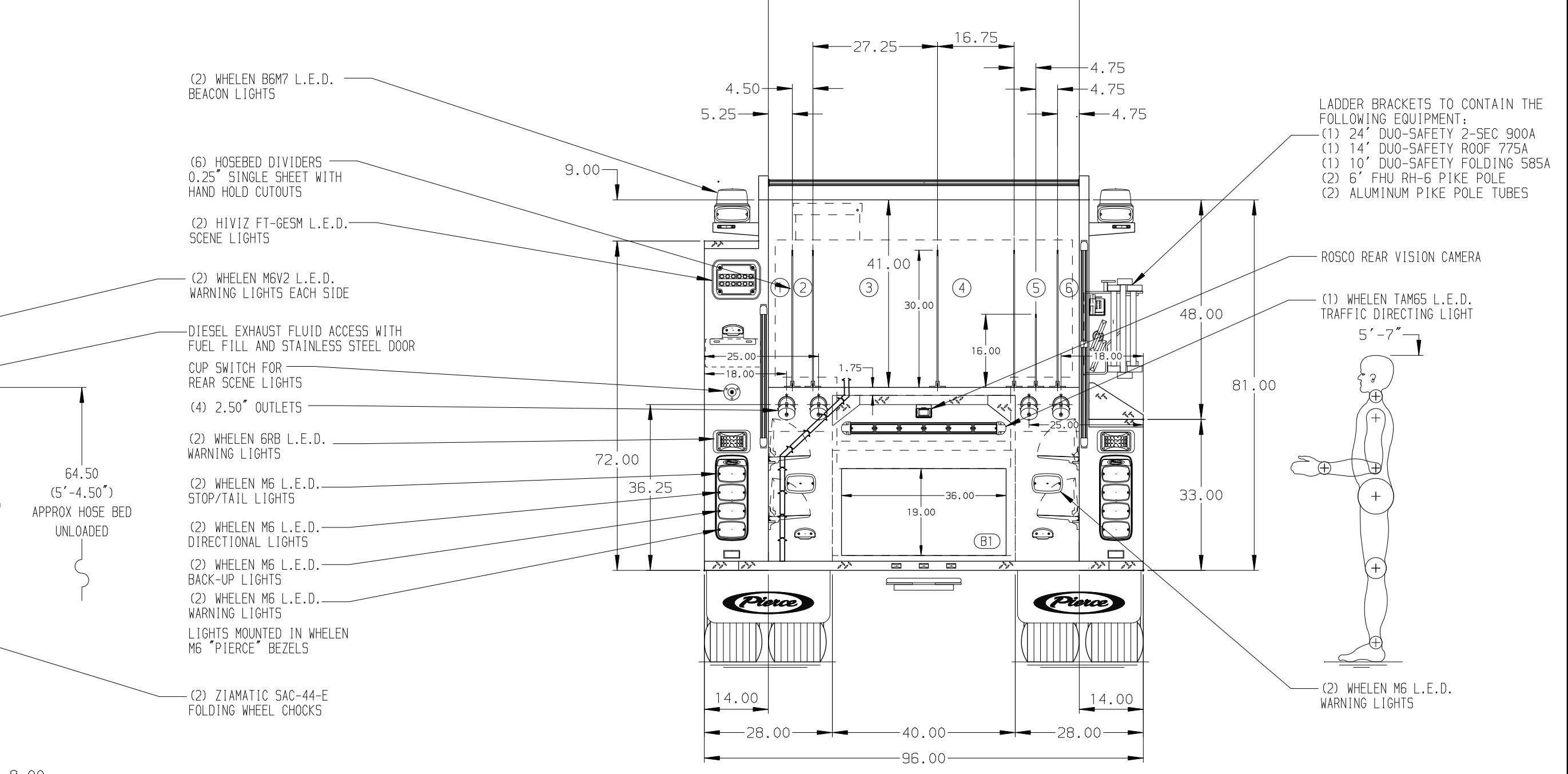
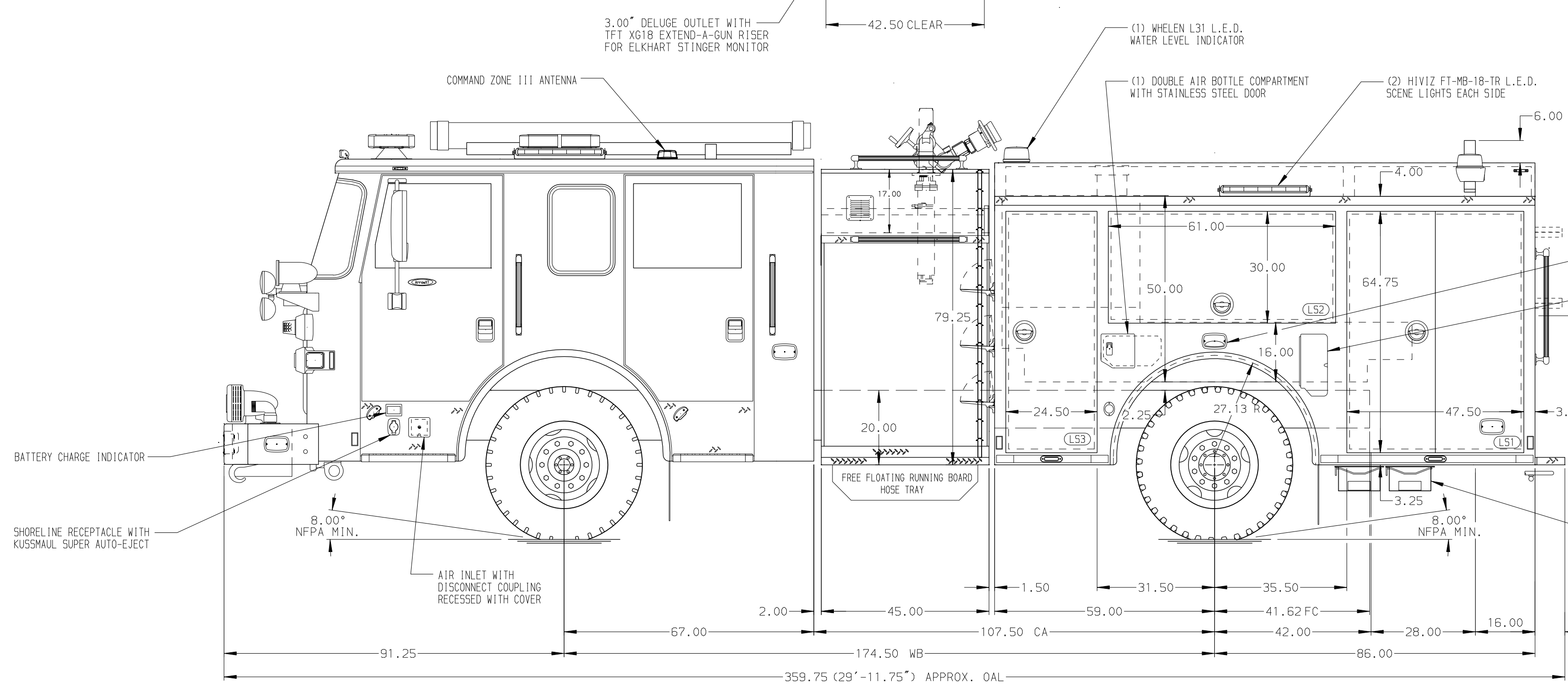


- HOSEBED CAPACITIES
- ① 200' OF 2.50" D.J. POLY HOSE
  - ② 200' OF 2.50" D.J. POLY HOSE
  - ③ 1050' OF 4.00" D.J. POLY HOSE
  - ④ 600' OF 3.00" D.J. POLY HOSE
  - ⑤ 400' OF 2.00" D.J. POLY HOSE
  - ⑥ 200' OF 2.00" D.J. POLY HOSE



STAINLESS STEEL BODY    MAXIMUM O.A.H. 120.00"    MAXIMUM O.A.L. 364.00"

**NOTE**  
DIMENSIONS SHOWN ARE APPROXIMATE AND ARE SUBJECT TO MINOR DEVIATIONS AS MAY OCCUR OR BE NECESSARY IN CONSTRUCTION. MINOR DETAILS NOT SHOWN.

1. WOGEL LUBE SYSTEM PUMP LOCATED PER SHOP ORDER
2. BATTERY CHARGER/COMPRESSOR LOCATED BEHIND DRIVER'S SEAT
4. L.E.D. DUAL LIGHT STRIPS LOCATED IN HOSE BED PER SHOP ORDER
5. REVERSED HINGED DOOR ON COMPARTMENT LS3
6. ONE FULL WIDTH ADJUSTABLE SHELF LOCATED IN COMPARTMENT RS2, TWO IN LS3, THREE IN LS1
7. ALUMINUM PEGBOARD ON BACK WALL COMPARTMENT LS2, LS3
8. AIR OUTLET WITH SHUT OFF VALVE LOCATED ON LEFT SIDE PUMP PANEL

REV	DATE	BY	CH	ARROWXT
08NOV21	JWO	AZA		CHASSIS DATA
25OCT21	JWO	AZA		MAKE
21OCT21	JWO	AZA		PIERCE
27SEP21	JWO	AZA		MODEL
30JUL21	JWO	NPE		

	<b>MANUFACTURING INC.</b>		JOB NO.	36282
			SCALE	1:24
		TITLE	2000-D-500P, 145" PUMPER BODY, LS FH, RS LOW, DELUGE RIGHT SIDE LADDER BRACKETS, 45" SIDE CONTROL	
		FOR	COLLEGE PARK VOLUNTEER FIRE DEPARTMENT COLLEGE PARK, MARYLAND	
		DWG NO.	36282AD	
		CHECKED BY	PHA	20APR21
		SHEET SIZE	D	SHEET NO. 1 OF 1