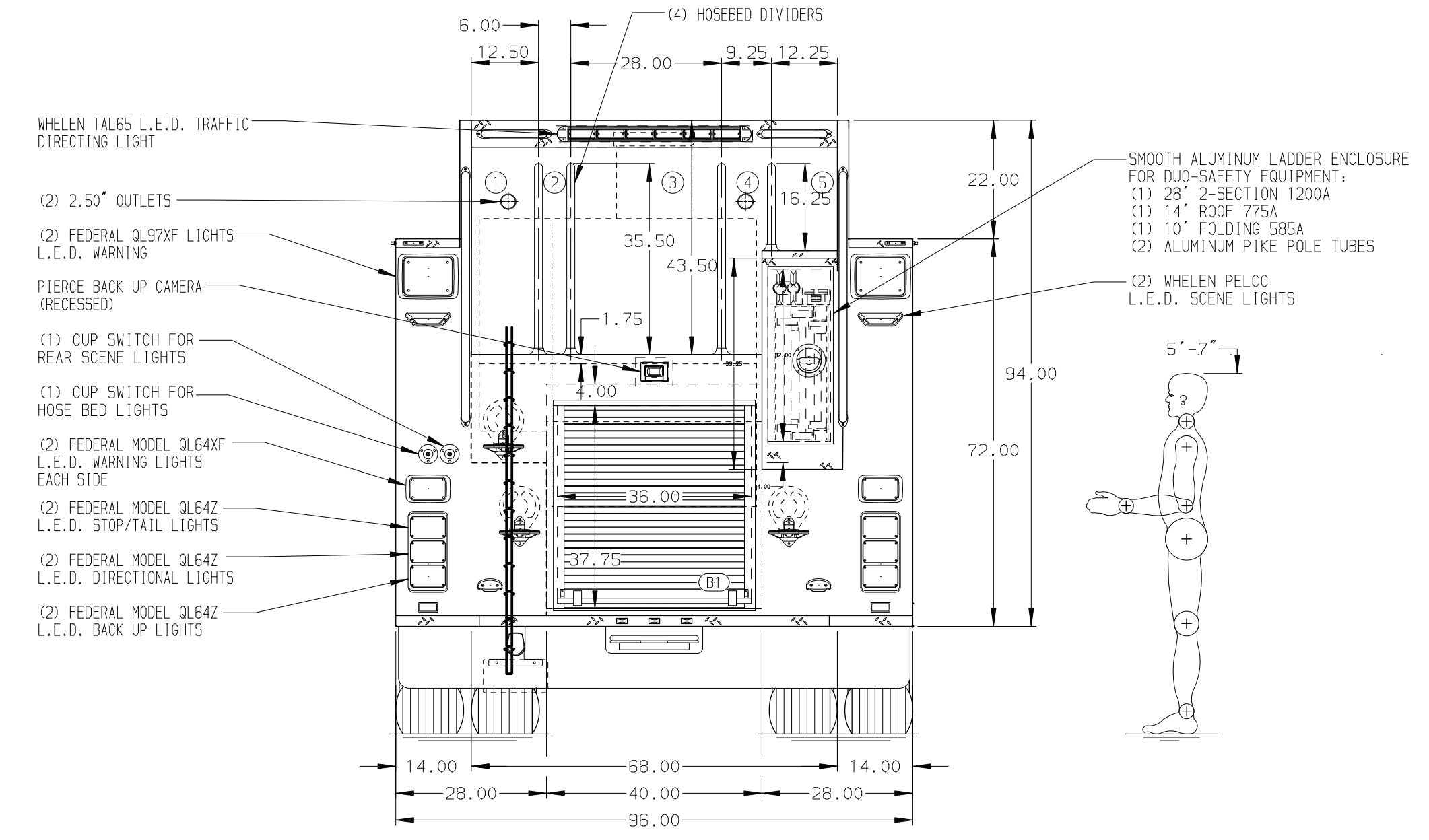
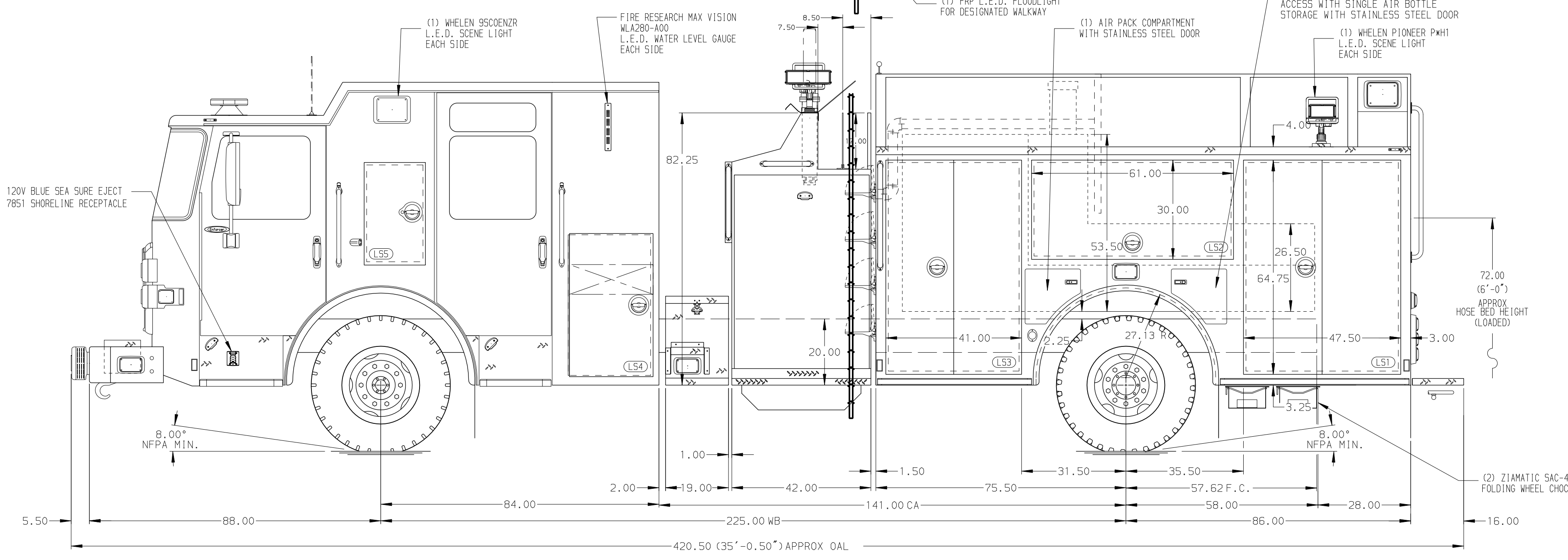


- HOSEBED CAPACITIES
- ① 300' OF 3.00" HOSE
 - ② 300' OF 1.75" HOSE
 - ③ 1000' OF 4.00" HOSE
 - ④ 300' OF 2.50" HOSE
 - ⑤ 300' OF 2.50" HOSE



ALUMINUM BODY

SIDE ROLL & FRONTAL IMPACT PROTECTION

NOTE
DIMENSIONS SHOWN ARE APPROXIMATE AND ARE SUBJECT TO MINOR DEVIATIONS AS MAY OCCUR OR BE NECESSARY IN CONSTRUCTION. MINOR DETAILS NOT SHOWN.

1. AIR INLET WITH DISCONNECT COUPLING ON DRIVER'S SIDE SEAT RISER
2. BATTERY CHARGER LOCATED IN FRONT LEFT SIDE BODY COMPARTMENT
3. DUAL L.E.D. LIGHT STRIPS LOCATED IN HOSE BED
4. DRIP PAN GUARD FOR ROLL-UP DOOR LOCATED IN COMPARTMENT B1
5. ONE FULL WIDTH/DEPTH ADJUSTABLE SHELF IN COMPARTMENTS LS1, LS3, RS1, RS2, AND RS3
6. ONE FLOOR MOUNTED SLIDE-OUT TRAY IN COMPARTMENTS LS1, RS1, RS3, AND B1
7. ONE SWING-OUT ALUMINUM TOOLBOARD IN COMPARTMENT LS2

CHASSIS DATA	TITLE	2000-D-750P, 161" FULL HEIGHT FR & RR, BODY, FDLR
MAKE	FOR	VALLEY VIEW CLEVELAND, OHIO
MODEL	DWG NO.	36291AD
ENFORCER	REV	

Pierce MANUFACTURING INC.

JOB NO. 36291

SCALE 1:24 DATE

DRAWN BY JUS 20APR21

CHECKED BY CDU 20APR21

SHEET SIZE D SHEET NO. 1 OF 1