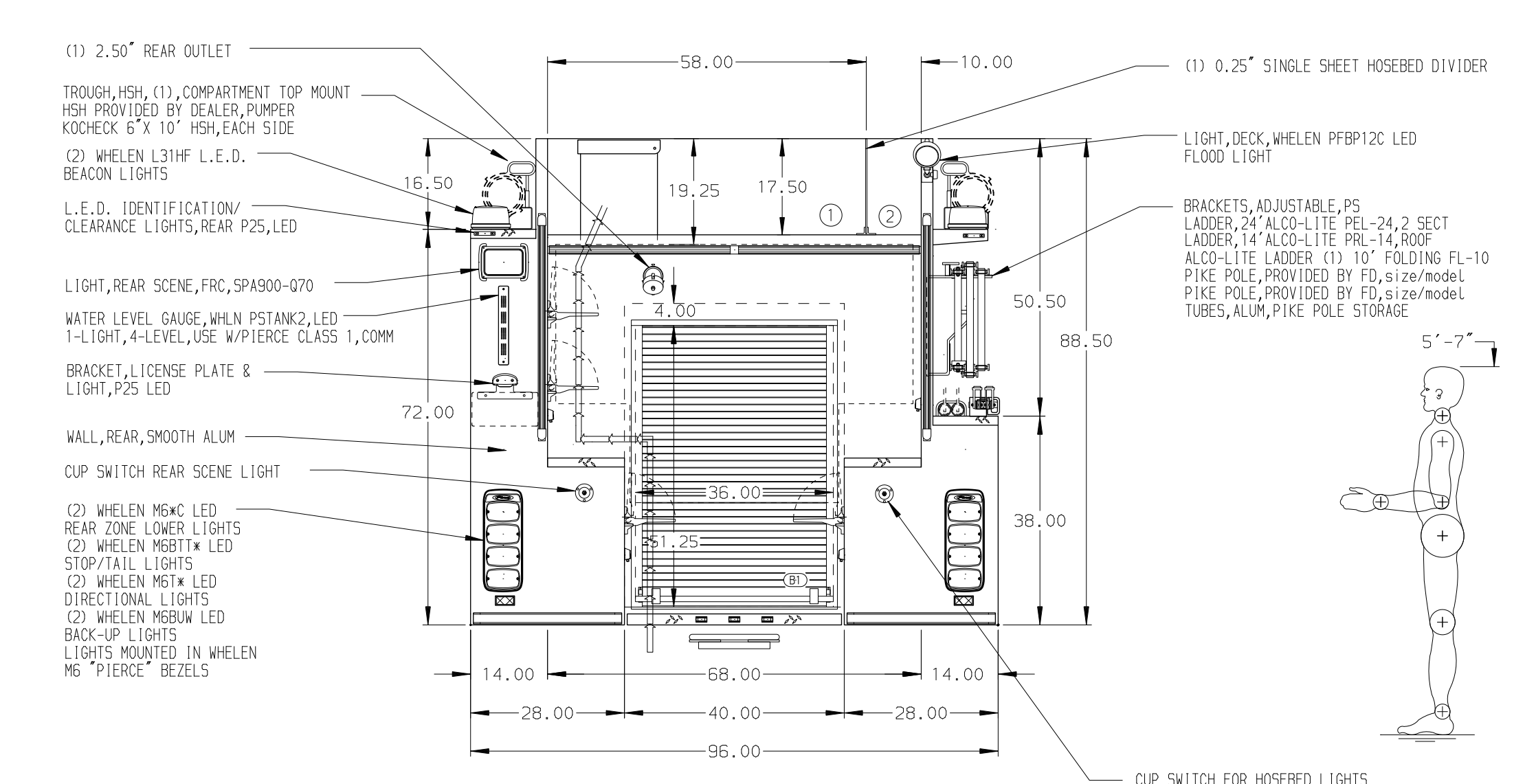
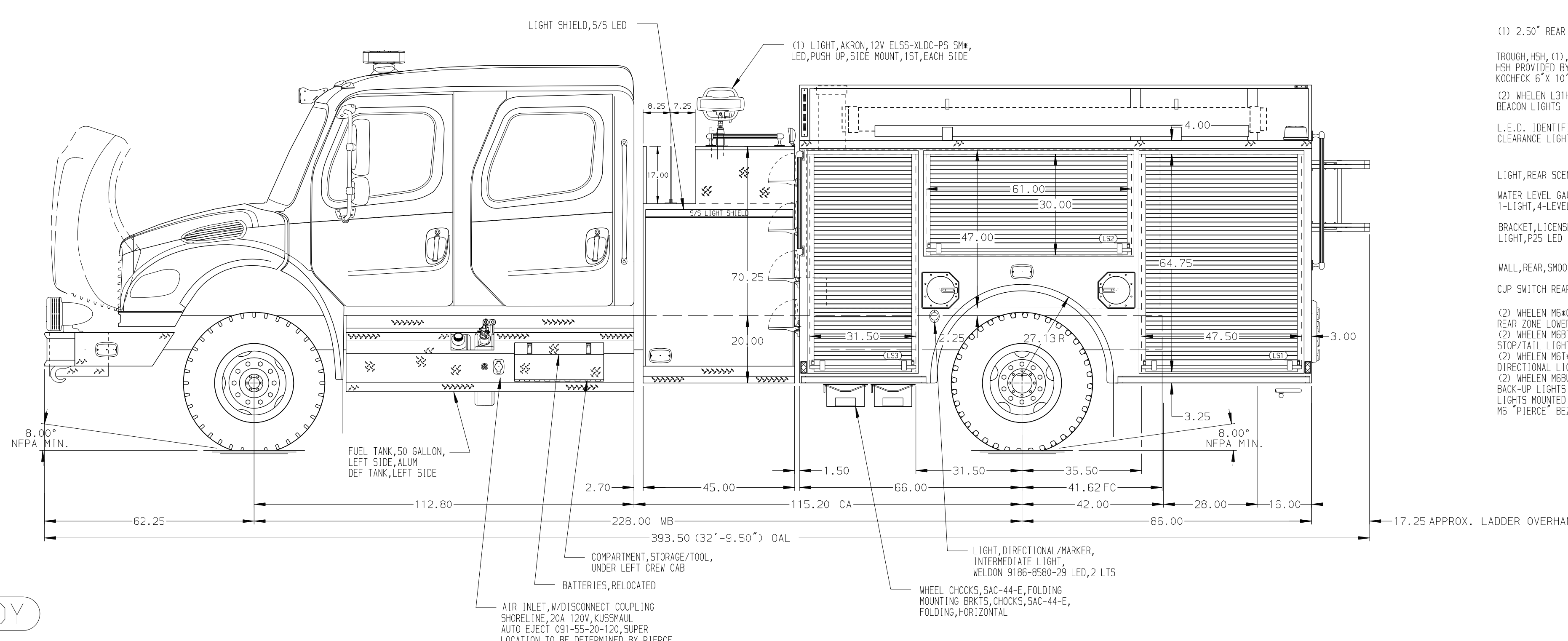


HOSEBED CAPACITIES

- ① 1000' OF 5.00" D.J. POLY HOSE
- ② 400' OF 2.50" D.J. POLY HOSE



ALUMINUM BODY

NOTE
DIMENSIONS SHOWN ARE APPROXIMATE AND ARE SUBJECT TO MINOR DEVIATIONS AS MAY OCCUR OR BE NECESSARY IN CONSTRUCTION. MINOR DETAILS NOT SHOWN.

| | | | | |
|---------|------|-----|----|--------|
| REV | DATE | BY | CH | M2-106 |
| 130CT21 | JLA | AJA | | |
| 22SEP21 | JAF | AJA | | |

| | | | |
|---------|---|------------|--------|
| | | JOB NO. | 36306 |
| | | SCALE | DATE |
| TITLE | 1250-D-1000 POLY, 152" PUMPER BODY, LS FULL HGT, RS LOW 45" SIDE CONTROL, (2) 1.5" CROSSSLAYS | DRAWN BY | JLA |
| FOR | LOWNDES COUNTY FIRE RESCUE VALDOSTA, GEORGIA | CHECKED BY | RWI |
| DWG NO. | 36306AD | SHEET SIZE | D |
| | | SHEET NO. | 1 OF 1 |