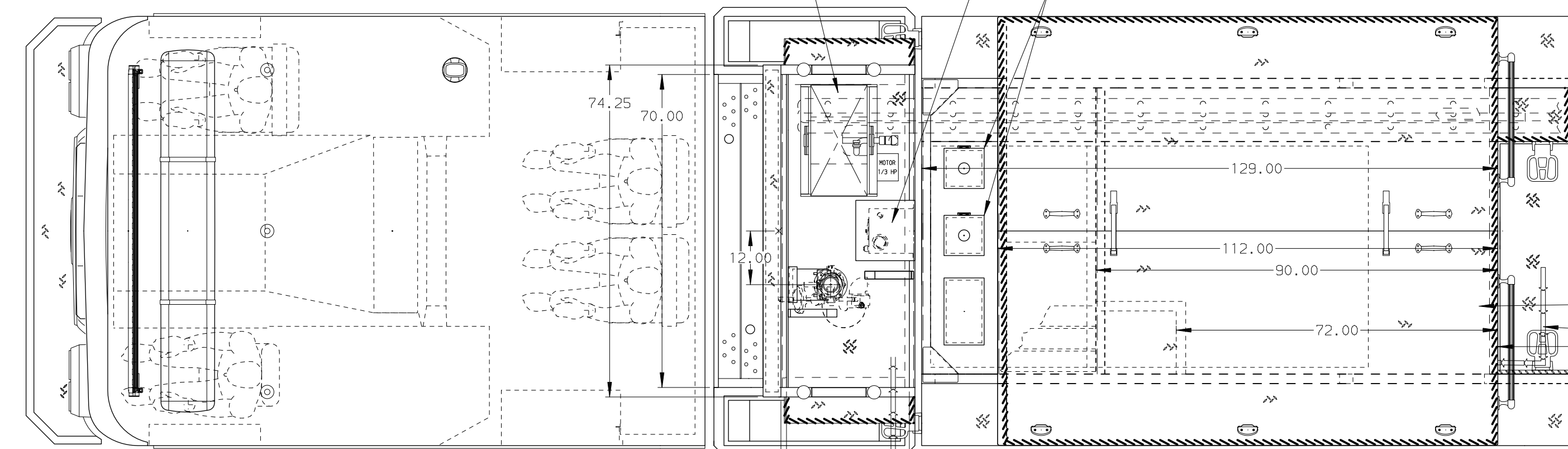
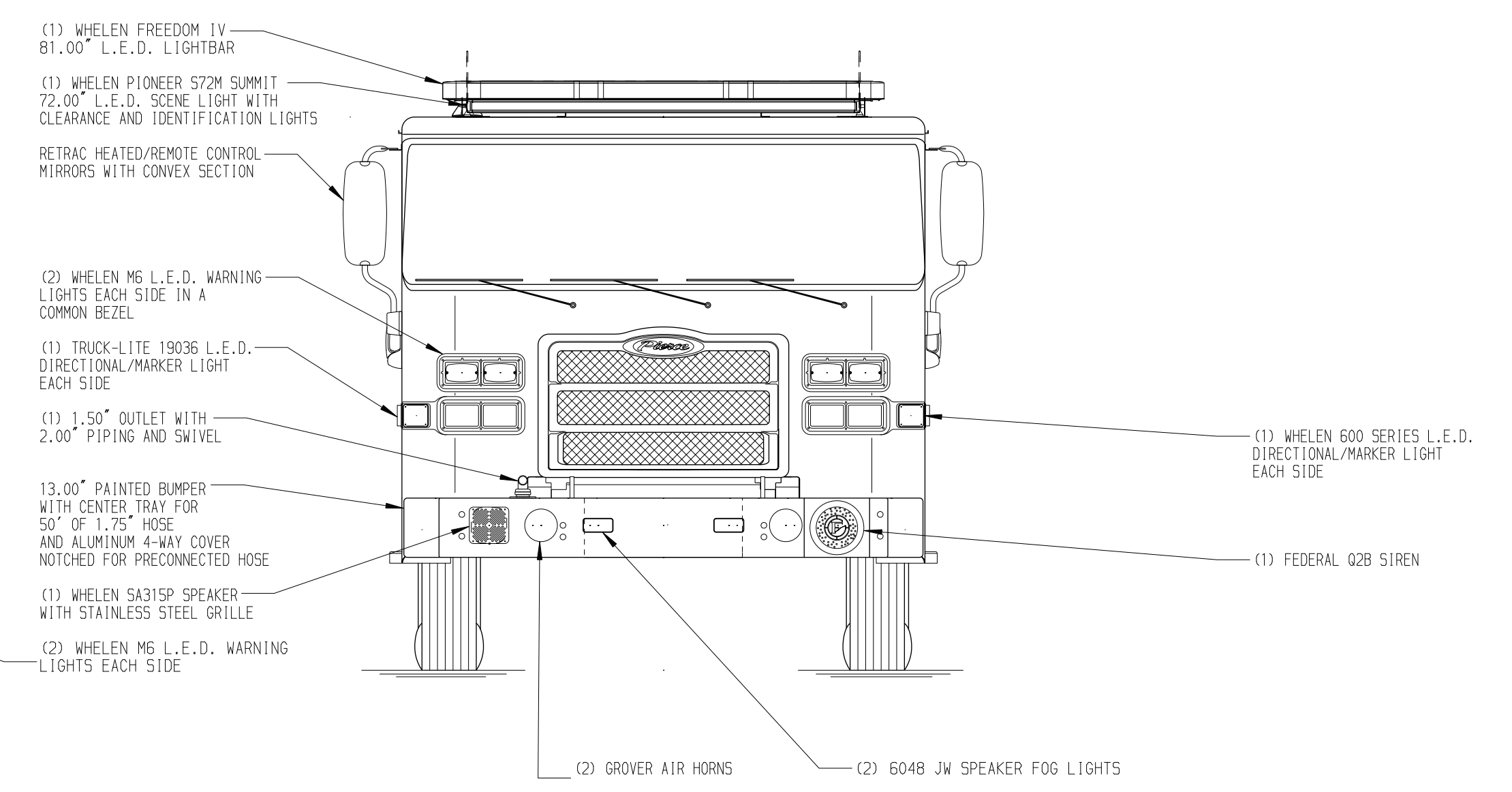
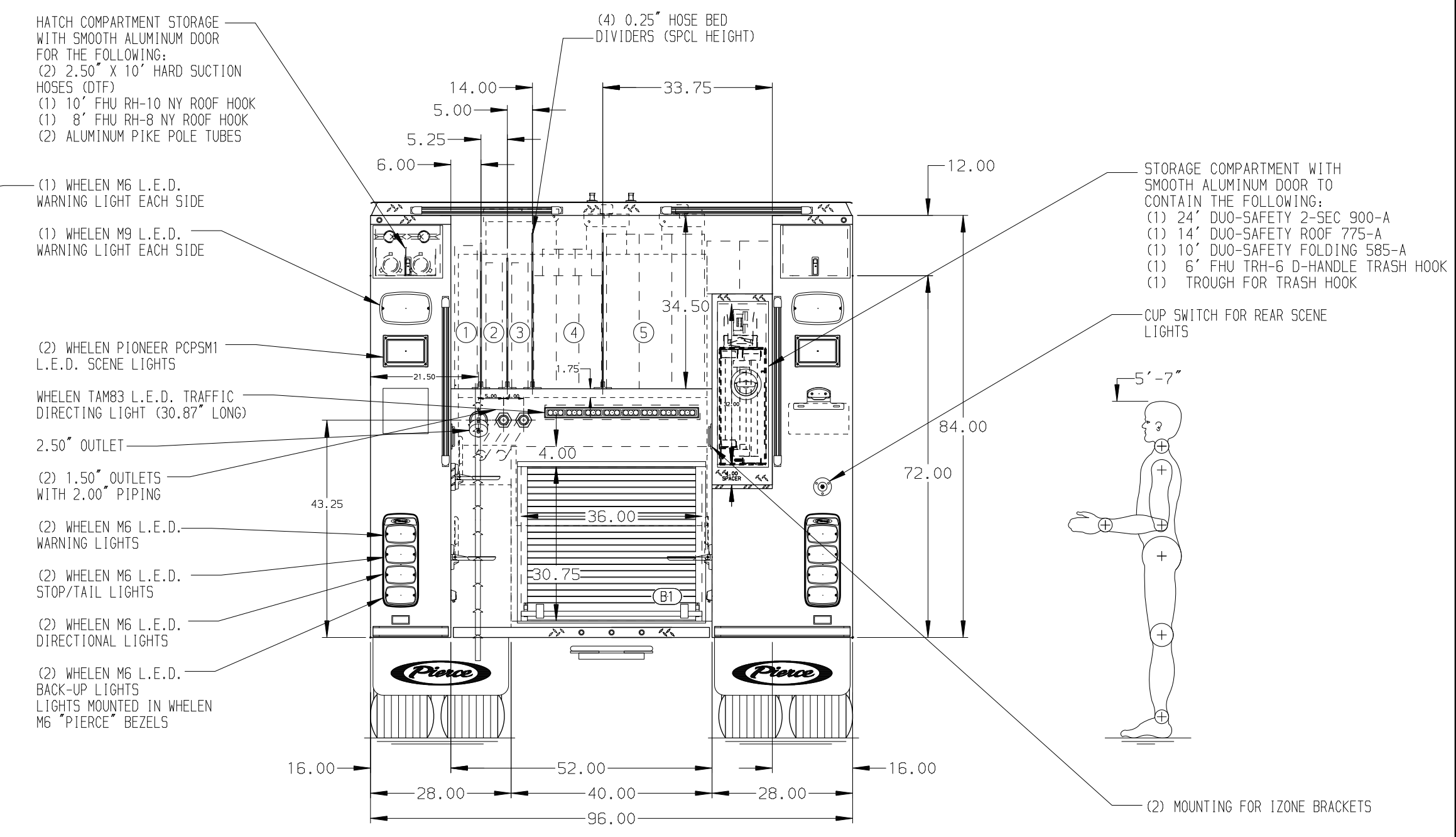
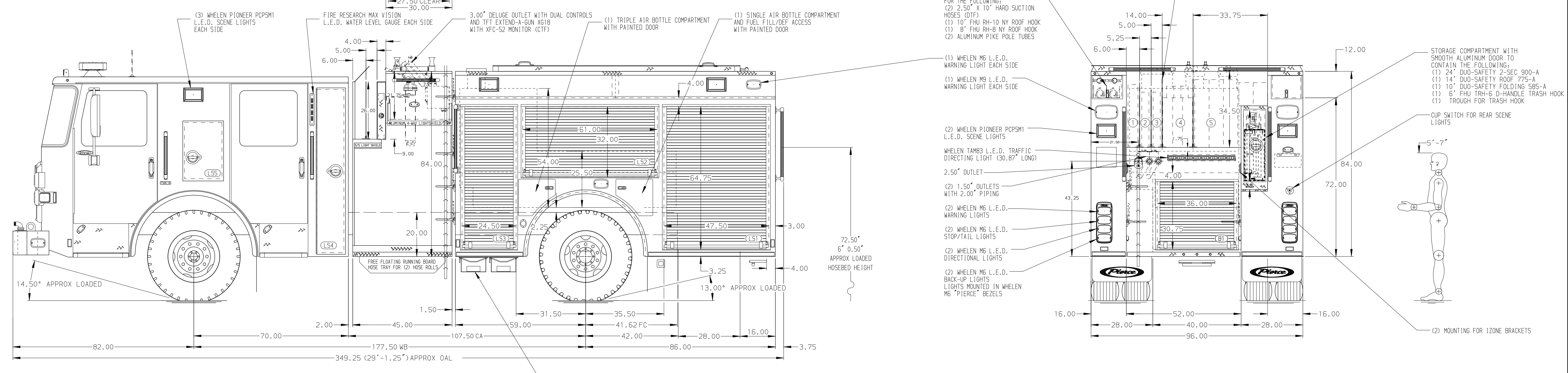


116.00 (9'-8")  
APPROX UNLOADED O.A.H.  
(114.50 LOADED O.A.H.)



- HOSEBED CAPACITIES
- ① 200' OF 2.50\"/>



ALUMINUM BODY

MAXIMUM O.A.H. 116.00" UNLOADED/ 114.50" LOADED

**NOTE**  
DIMENSIONS SHOWN ARE APPROXIMATE AND ARE SUBJECT TO MINOR DEVIATIONS AS MAY OCCUR OR BE NECESSARY IN CONSTRUCTION. MINOR DETAILS NOT SHOWN.

1. BATTERY CHARGER LOCATED FRONT LEFT SIDE BODY COMPARTMENT
2. BATTERY CHARGER INDICATOR LOCATED ON DRIVER'S SEAT RISER
3. DRIP PAN GUARD FOR ROLL-UP DOOR LOCATED ON ALL SIDE BODY COMPARTMENT DOORS
4. FIVE FULL WIDTH/DEPTH ADJUSTABLE SHELVES PER SHOP ORDER
5. TWO ADJUSTABLE SLIDE-OUT TRAYS PER SHOP ORDER
6. ONE FLOOR MOUNTED SLIDE-OUT TRAY PER SHOP ORDER
7. TWO PARTITIONS PER SHOP ORDER
8. ONE VERTICAL PARTITION IN COMPARTMENT RS2
9. ALUMINUM PEGBOARD ON BACK WALL PER SHOP ORDER
10. ONE FULL WIDTH/DEPTH FIXED SHELF PER SHOP ORDER
11. TWO ALUMINUM PEGBOARD WITH TRACKS ON THE SIDE WALLS PER SHOP ORDER
12. AIR INLET/OUTLET WITH DISCONNECT FITTING IN DRIVER SIDE PUMP PANEL
13. ONE 120V 6-PLACE RECEPTACLE STRIP LOCATION TO BE DETERMINED
14. 120V BLUE SEA SURE EJECT 7851 SHORELINE RECEPTACLE IN DRIVER SIDE PUMP PANEL
15. ONE 6\"/>

| REV     | DATE | BY  | CH | ENFORCER |
|---------|------|-----|----|----------|
| 02DEC21 | JUS  | AST |    | MAKE     |
| 15NOV21 | JUS  | WKL |    | PIERCE   |
| 12JUL21 | JUS  | WKL |    | MODEL    |

|       |   |            |           |
|-------|---|------------|-----------|
|       |   | JOB NO.    | 36312     |
|       |   | SCALE      | DATE      |
| TITLE | 1500-D-540P, 500G WATER W/20G & 20G FOAM, 145\"/> |            |           |
| FOR   | SONOMA COUNTY FIRE DISTRICT WINDSOR, CALIFORNIA   | DRAWN BY   | JUS       |
|       |   | CHECKED BY | WKL       |
|       |   | SHEET SIZE | SHEET NO. |
|       |   | D          | 1 OF 1    |