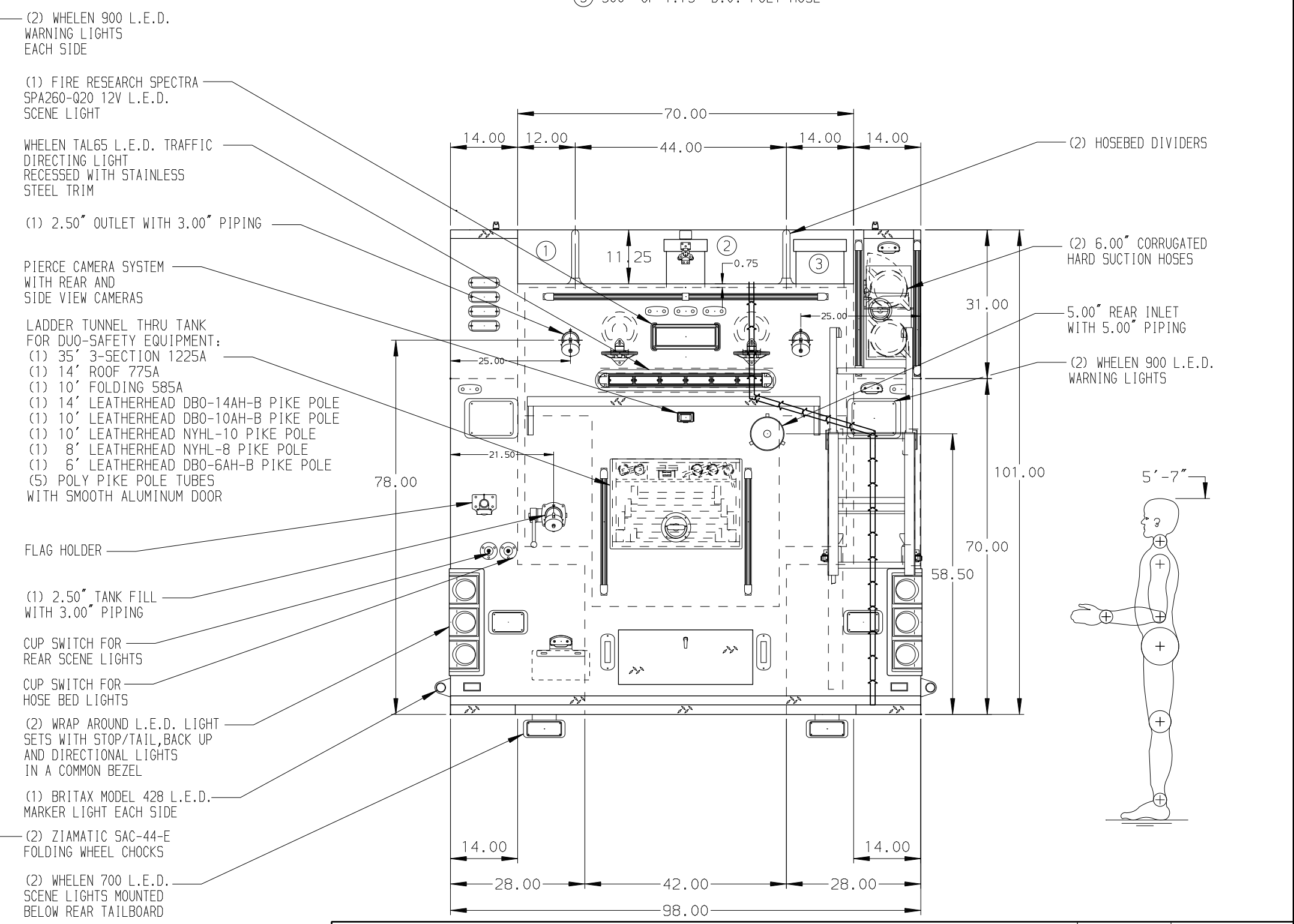
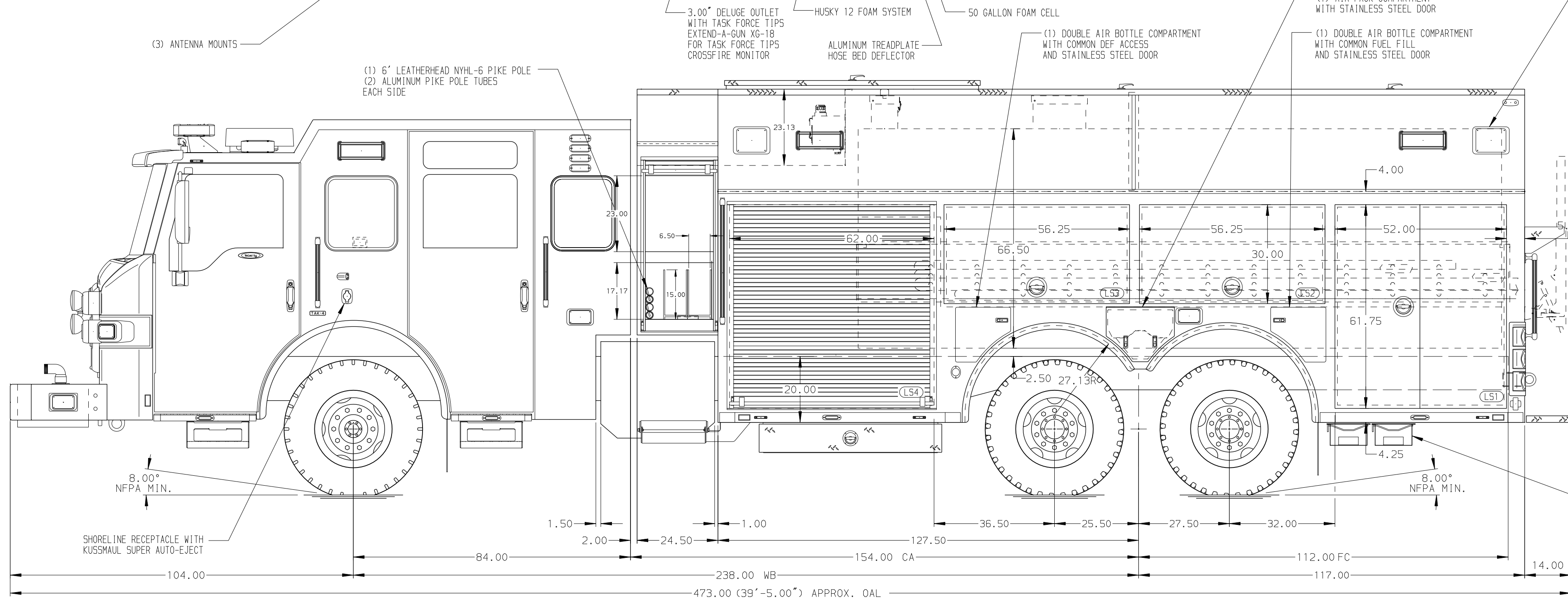


**HOSEBED CAPACITIES**

- 300' OF 2.50" D.J. POLY HOSE
- 1000' OF 5.00" D.J. POLY HOSE
- 300' OF 1.75" D.J. POLY HOSE



**ALUMINUM BODY SIDE ROLL AND FRONTAL IMPACT PROTECTION**

**NOTE**  
DIMENSIONS SHOWN ARE APPROXIMATE AND ARE SUBJECT TO MINOR DEVIATIONS AS MAY OCCUR OR BE NECESSARY IN CONSTRUCTION. MINOR DETAILS NOT SHOWN.

- BATTERY CHARGER/COMPRESSOR LOCATED IN COMPARTMENT LS4
- BATTERY CHARGER INDICATOR BEHIND DRIVER'S SEAT DISPLAYED THROUGH WINDOW
- ONE FULL WIDTH/DEPTH ADJUSTABLE SHELF IN COMPARTMENTS LS1,LS2,LS3,RS1,RS3,RS4
- ONE ADJUSTABLE SLIDE-OUT TRAY IN COMPARTMENTS LS1,LS4,RS1
- ONE FLOOR MOUNTED SLIDE-OUT TRAY IN COMPARTMENT LS1,LS4,RS1,RS4
- ONE ADJUSTABLE TOOL BOARD MOUNTED TO SLIDE-OUT TRAY IN COMPARTMENT LS4
- ONE SKING-OUT ALUMINUM TOOL BOARD IN COMPARTMENT RS2
- PAC TRAC ON BACK WALL OF COMPARTMENTS LS1,LS2,LS3,LS4,RS1,RS2,RS3,RS4
- AIR INLET WITH DISCONNECT COUPLING ON LEFT SIDE PUMP PANEL
- AIR OUTLET WITH SHUT OFF VALVE ON LEFT AND RIGHT SIDE PUMP PANELS
- THREE POLY TOOL BOXES LOCATED IN COMPARTMENT RS1
- CUTOUT PARTITION LOCATED BETWEEN COMPARTMENTS LS2/LS3, RS2/RS3

REV	DATE	BY	CH	VELOCITY
290CT21	JWO	NPE		CHASSIS DATA
27AUG21	JWO	NPE		MAKE PIERCE
21MAY21	JWO	NPE		MODEL

		JOB NO.	36315
		SCALE	DATE
TITLE	1500-D-2500P W/50 GAL. FOAM CELL,DELUGE,GENERATOR 244" PUC TANKER BODY,LADDERS THRU TANK,HUSKY 12		
FOR	BRIDGEVILLE VOLUNTEER FIRE COMPANY BRIDGEVILLE, DELAWARE		
DWG NO.	36315AD		
CHECKED BY	JWO	DRAWN BY	07MAY21
SHEET SIZE	D	CHECKED BY	NPE 12MAY21
		SHEET NO.	1 OF 1