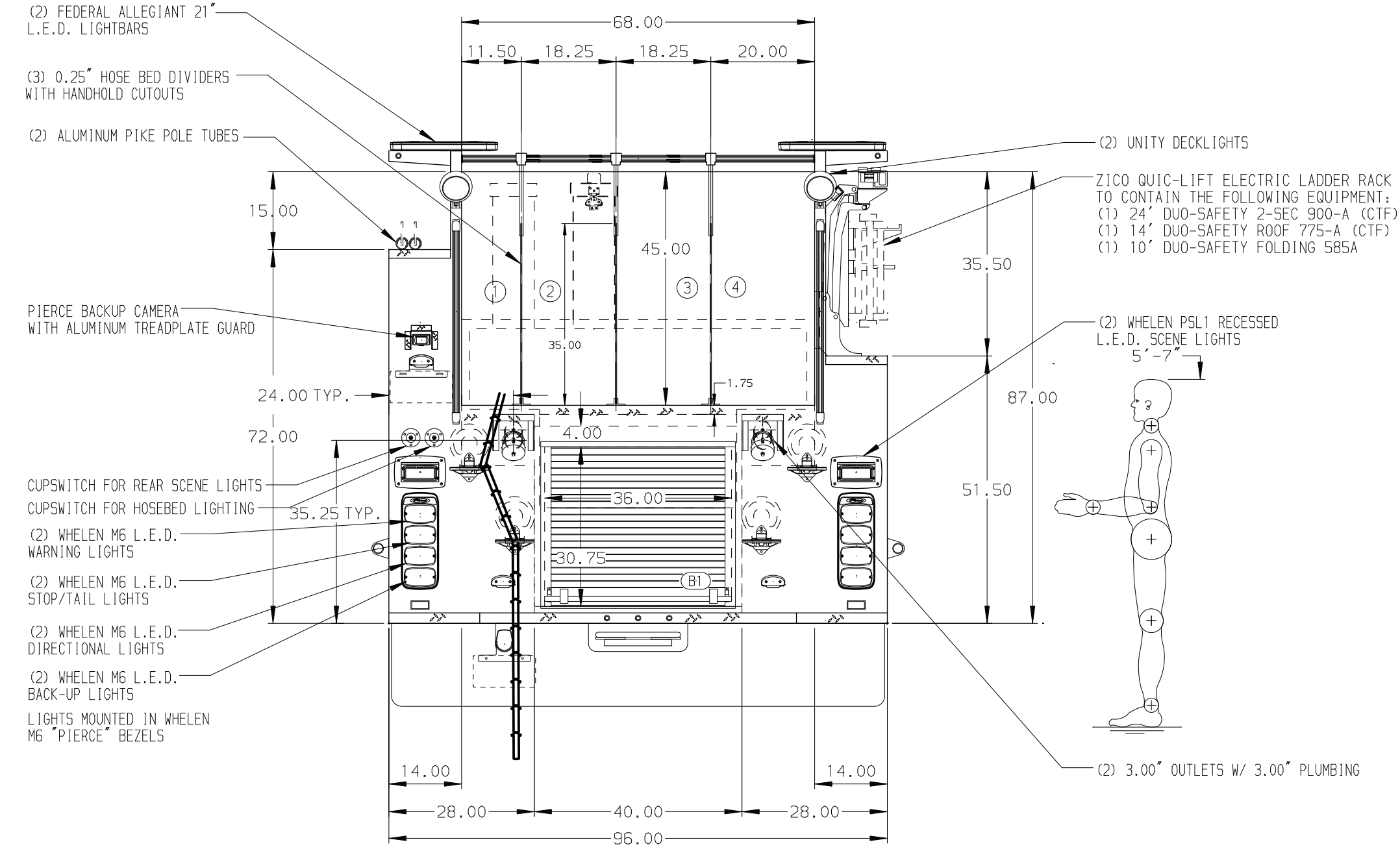
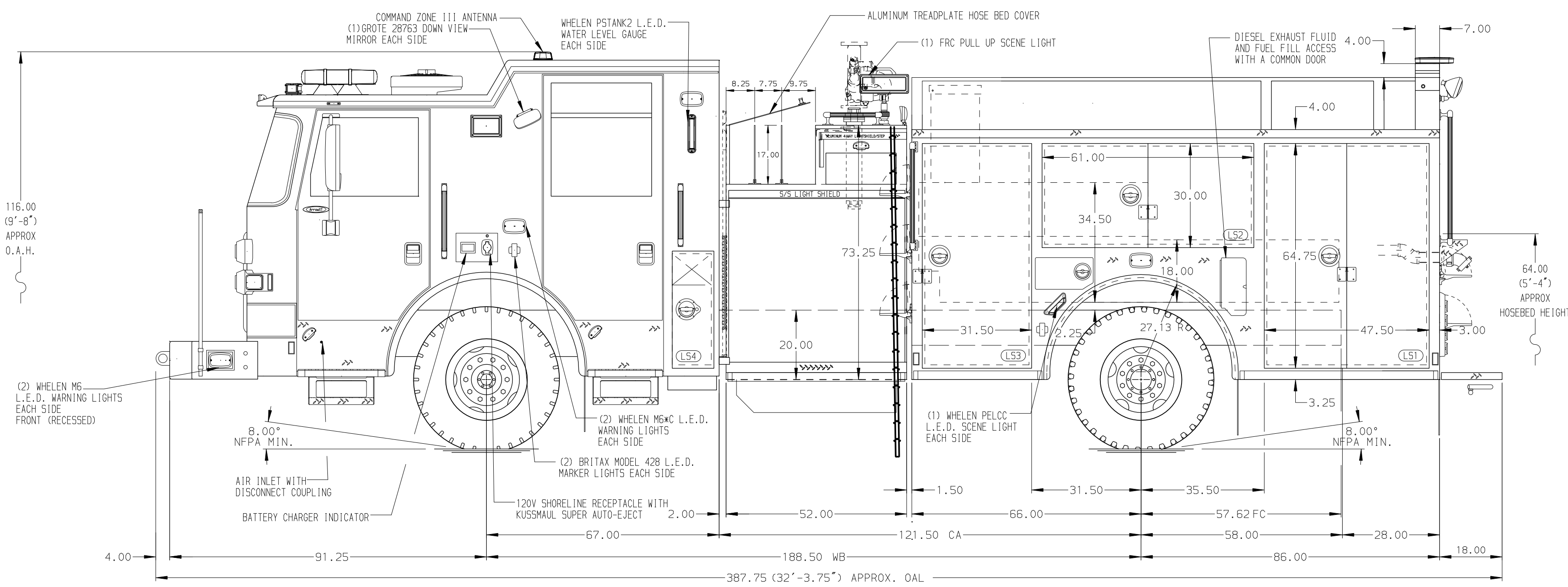


- HOSEBED CAPACITIES**
- ① 400' OF 3.00\"/>



ALUMINUM BODY MAXIMUM O.A.H. 120.00"

NOTE
DIMENSIONS SHOWN ARE APPROXIMATE AND ARE SUBJECT TO MINOR DEVIATIONS AS MAY OCCUR OR BE NECESSARY IN CONSTRUCTION. MINOR DETAILS NOT SHOWN.

1. WHEEL CHOCKS AND BRACKETS (CTF)
2. BATTERY CHARGER BEHIND DRIVER'S SEAT
3. SPECIAL FIBERGLASS GRID HOSE BED GRATING
4. DUAL L.E.D. LIGHT STRIPS LOCATED IN HOSE BED
5. REVERSED HINGED DOOR ON L53
6. HASP LOCK FOR L51, L52, L53, R51, R52, AND R53
7. ONE FULL WIDTH/DEPTH ADJUSTABLE SHELF IN L51, L53, AND R51
8. ONE ADJUSTABLE SLIDE-OUT TRAY IN L53
9. ONE FLOOR MOUNTED SLIDE-OUT TRAY IN L51, L53, B1, R51, AND R53
10. ALUMINUM 4-WAY ON FENDER PANELS EACH SIDE
11. ONE 120V NEMA DUPLEX RECEPTACLE IN EACH EMS COMPARTMENT
12. ONE 120V NEMA DUPLEX RECEPTACLE IN R51
13. PARTITION BETWEEN L51/B1 AND R51/B1
14. ALUMINUM PEGBOARD W/ TRACK IN L53
15. SPECIAL FIBERGLASS GRID GRADING FOR THE CROSSLAYS

		JOB NO.	36334
		SCALE	DATE
CHASSIS DATA MAKE MODEL ARROWXT		TITLE	1500-D-500P W/30 GAL. FOAM CELL, DELUGE, (3) X-LAYS 152" PUMPER BODY, RIGHT SIDE ZICO LADDER RACK
REV 06JAN22 LST DTJ 190CT21 LST DTJ 110CT21 LST DTJ 08SEP21 LST DTJ		FOR	HIGHLAND PARK FIRE DEPARTMENT HIGHLAND PARK, ILLINOIS
DWG NO.		36334AD	
SHEET NO.		1 OF 1	