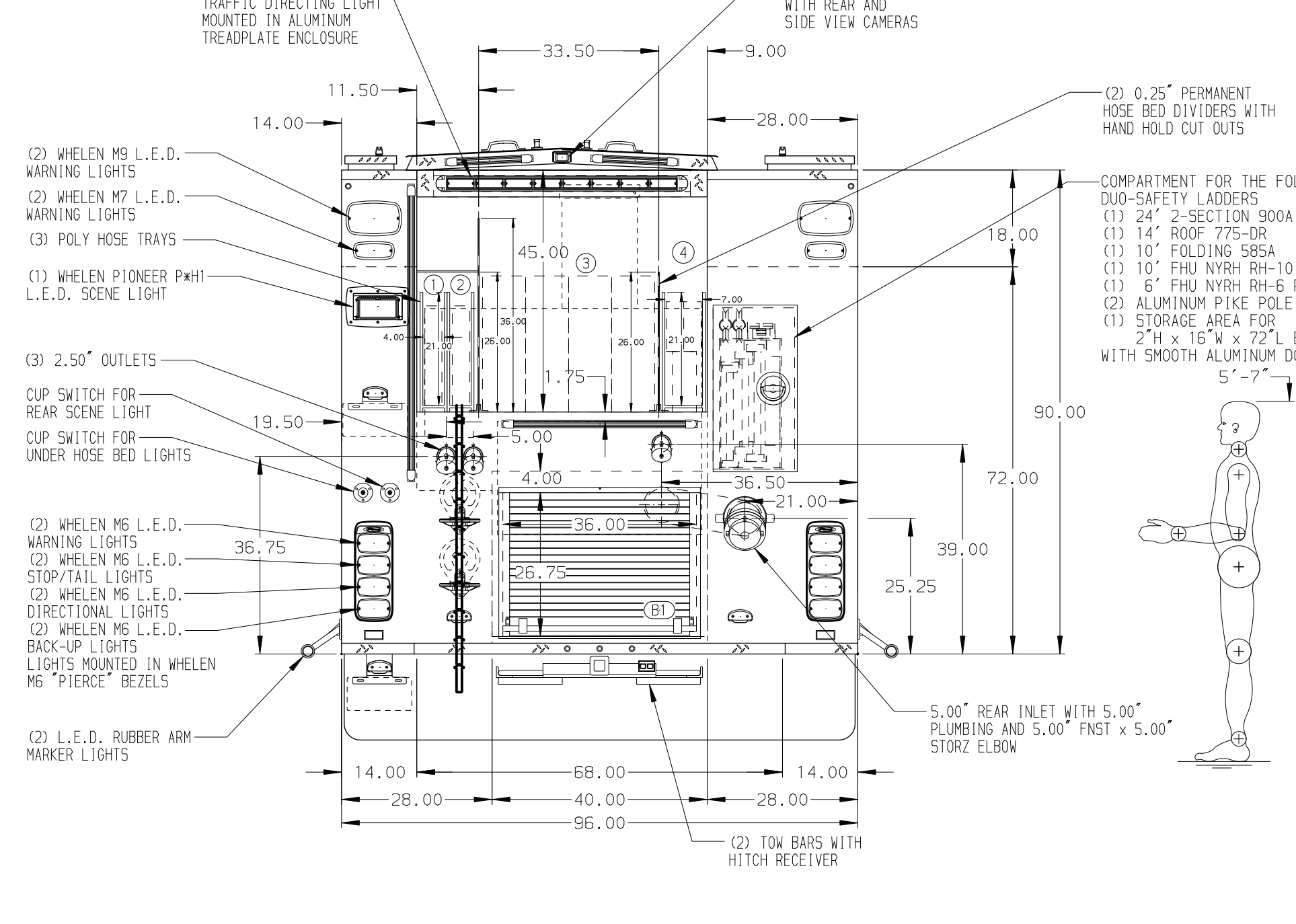


- HOSEBED CAPACITIES**
- ① - 200' OF 1.75" DJP HOSE
 - ② - 200' OF 1.75" DJP HOSE
 - ③ - 1000' OF 5.00" DJP HOSE
 - ④ - 100' OF 2.50" DJP HOSE W/200' OF 1.75" DJP HOSE



ALUMINUM BODY

SIDE ROLL AND FRONTAL IMPACT PROTECTION

NOTE
DIMENSIONS SHOWN ARE APPROXIMATE AND ARE SUBJECT TO MINOR DEVIATIONS AS MAY OCCUR OR BE NECESSARY IN CONSTRUCTION. MINOR DETAILS NOT SHOWN.

1. ONSPOT AUTOMATIC TIRE CHAINS TO BE PROVIDED AT REAR
2. AIR OUTLET WITH SHUT OFF VALVE LOCATED AT L5 PUMP PANEL
3. HOVEL 22 POINT LUBE SYSTEM W/TAK-4 SUSPENSION
4. TWO PIKE POLE TUBES LOCATED IN TRANSVERSE COMPARTMENT (PIKE POLES ARE CTF)
5. BATTERY CHARGER/COMPRESSOR LOCATED IN COMPARTMENT L53
6. AMOR L.E.D. LIGHTS UNDER HOSE BED COVER
7. DRIP PAN GUARD ON ALL BODY ROLL UP DOORS
8. ELASTIC PULL STRAP ON DOORS ON ALL SIDE COMPARTMENTS
9. DUAL L.E.D. LIGHT STRIPS ON EACH SIDE OF ALL COMPARTMENT DOORS
10. L.E.D. LIGHT STRIPS ON HATCH COMPARTMENTS

11. ONE FULL WIDTH/DEPTH ADJUSTABLE SHELF IN COMPARTMENTS L52 AND R52; TWO IN L51 AND R51
12. ONE FULL WIDTH/DEPTH FLOOR MOUNTED SLIDE-OUT TRAY WITH SIDE SLIDES IN COMPARTMENTS L53 AND R53
13. ONE ADJUSTABLE TOOL BOARD MOUNTED TO SLIDE-OUT TRAY IN COMPARTMENTS L53 AND R53
14. SIX POLY TOOL BOXES TO BE SHIPPED LOOSE
15. PAC TRAC IN COMPARTMENTS L52, L53, R51, R52, AND R53
16. PARTITION BETWEEN COMPARTMENTS L51/B1 AND R51/B1
17. MIC AND SPEAKER COMPARTMENT LOCATED ON L5 PUMP PANEL
18. ONE 120V DUPLEX RECEPTACLE IN COMPARTMENTS L51, L52, R51, R52, AND B1

		JOB NO.	36341
		SCALE	DATE
Pierce MANUFACTURING INC.		TITLE	2000-D-520P, 500G WATER W/20G FOAM, 152" PUMPER BODY (3) CROSSLAYS, DELUGE, LIGHT TOWER, RS LADDER STRG
FOR LAWRENCE FIRE & MEDICAL LAWRENCE, KANSAS		DWG NO.	36341AD
DRAWN BY SAM CHECKED BY CZA SHEET SIZE D	DATE 10JUN21 DATE 22JUN21 SHEET NO. 1 OF 1		

REV	DATE	BY	CH	VELOCITY
120CT21		SAM	AZA	MAKE
20AUG21		SAM	AZA	PIERCE
29JUN21		SAM	SAM	MODEL