

**PUMPER
BODY**

Medium Galvanneal 2nd Gen Pumper

CHASSIS
Enforcer Chassis

**CHASSIS
AXLE, FRONT, CUSTOM**
18,000 Lb TAK-4 Axle

AXLE, REAR
27,000 Lb Dana Axle

ENGINE
455 HP Cummins X12 Engine

TRANSMISSION
Allison 5th Gen, 4000 EVS P

BUMPER
19" Extended Stainless Steel

CAB
7010 Enforcer Cab

**BODY
WATER TANK**
1000 Gallon Poly Water Tank

COMPT, PUMPER, REAR
51.25" FF RollUp Rear Compt

COMPT, PUMPER, LEFT SIDE
152" RollUp Full Height Front & Rear FDLER

COMPT, PUMPER, RIGHT SIDE
152" RollUp Full Height Front & Rear FDLER

**FIRE SUPPRESSION
PUMPHOUSE**

48" Control Zone Side Mount

PUMP

1500 GPM Waterous CSU

CROSSLAYS, 1.50"
(2) 1.50" Standard Capacity

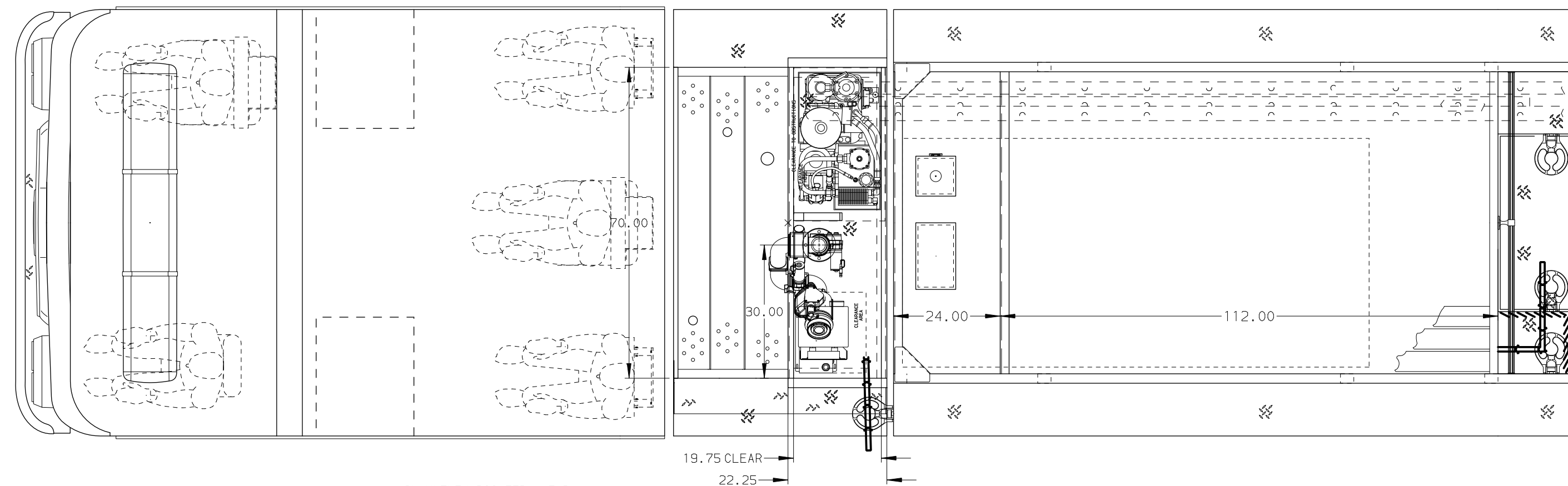
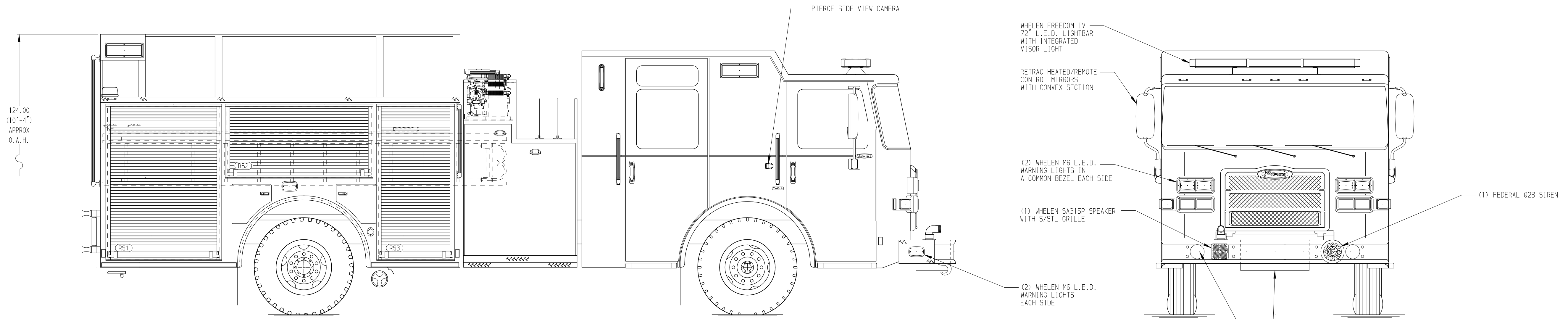
CROSSLAYS, 2.50"
(1) 2.50" Standard Capacity

SPEEDLAYS
SpeedLays Not Required

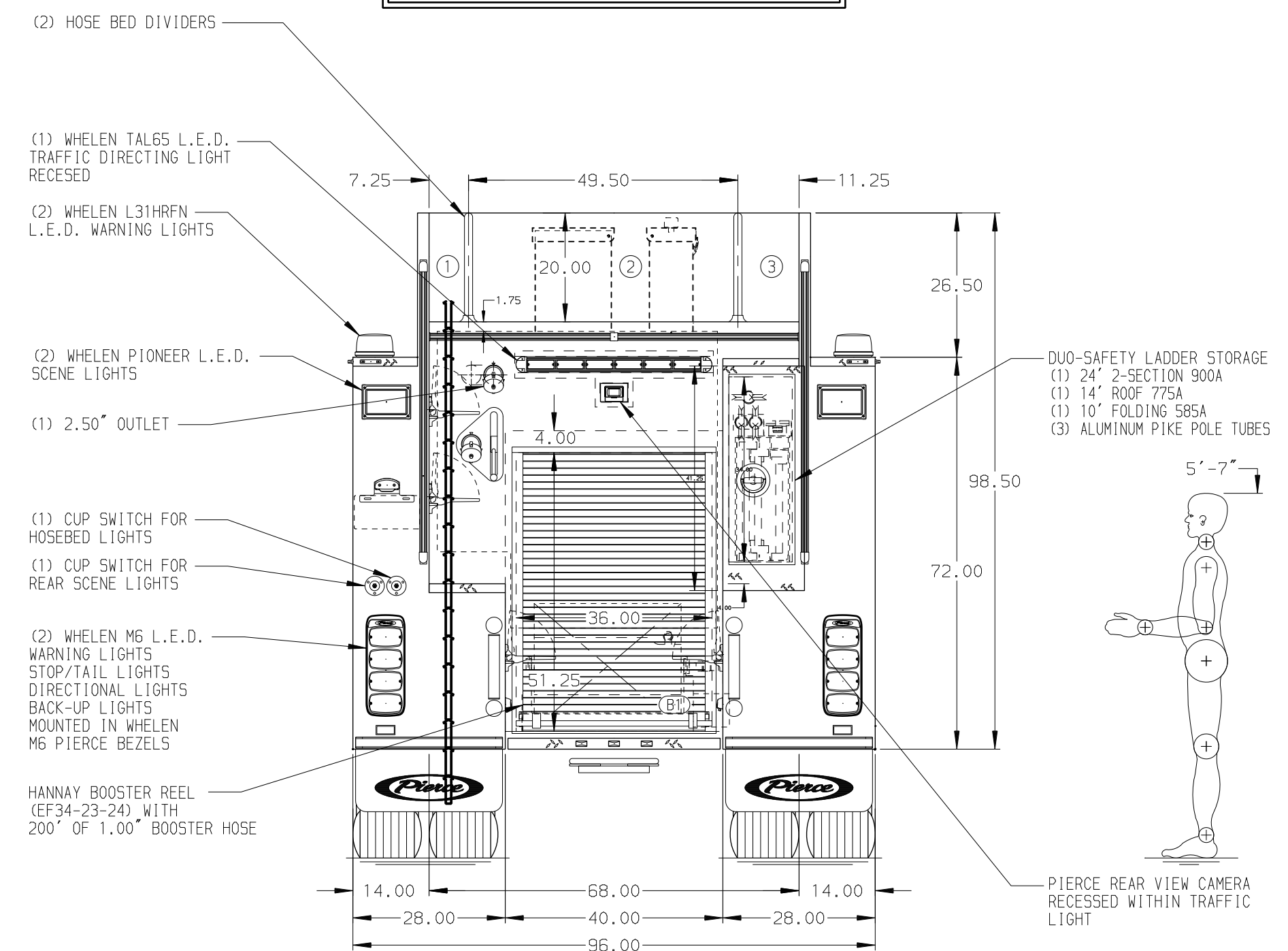
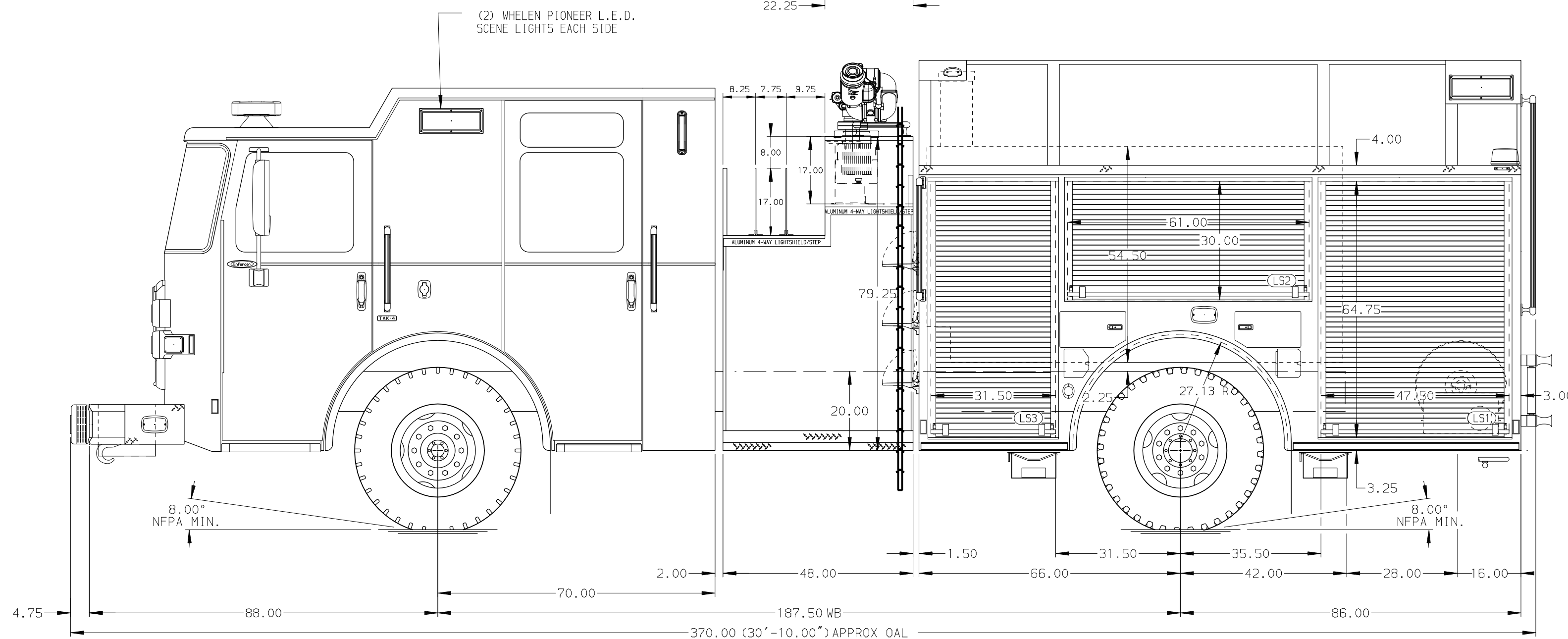
GENERATOR
Generator Not Required

Foam System
Husky 3 Single Agent Foam System

Foam Cell
30 Gallon Foam Cell, Reduced Water



HOSEBED CAPACITY	
BED 1	400' OF 1.75" D.J. POLY HOSE
BED 2	1000' OF 5.00" D.J. POLY HOSE
BED 3	400' OF 2.50" D.J. POLY HOSE



NOTE
DIMENSIONS SHOWN ARE APPROXIMATE AND ARE SUBJECT TO MINOR DEVIATIONS AS MAY OCCUR OR BE NECESSARY IN CONSTRUCTION. MINOR DETAILS NOT SHOWN.

- ONE 2.50 OUTLET WITH 2.50 PIPING AND SWIVEL LOCATED ON TOP BUMPER RIGHT SIDE
- SHORELINE RECEPTACLE WITH KISSMALL SUPER AUTO-EJECT LOCATED ON DRIVER SIDE OF THE CAB
- AIR INLET WITH DISCONNECT COUPLING IN THE DRIVER SIDE STEPWELL
- BATTERY CHARGER LOCATED IN COMPARTMENT PER SHOP ORDER
- BATTERY CHARGE INDICATOR LOCATED ON THE DRIVER SIDE SEAT RISER
- SEVEN ADJUSTABLE SHELVES IN COMPARTMENTS PER SHOP ORDER
- ONE FLOOR MOUNTED SLIDE-OUT TRAY IN COMPARTMENT PER SHOP ORDER
- ONE SWING-OUT TOOLBOARD LOCATED IN COMPARTMENT PER SHOP ORDER
- AUTOMATIC TIRE CHAINS

REV	DATE	BY	CH	ENFORCER
1	16SEP21	MMF	CHR	PIERCE
2	04AUG21	MMF	CHR	MODEL

		JOB NO.	36374
		SCALE	DATE
TITLE	Pierce Pumper Approval Drawing		
FOR	Taos Fire Department		
DWG NO.	36374AD		
DRAWN BY	MMF	CHECKED BY	COL
SHEET SIZE	D	SHEET NO.	1 OF 1