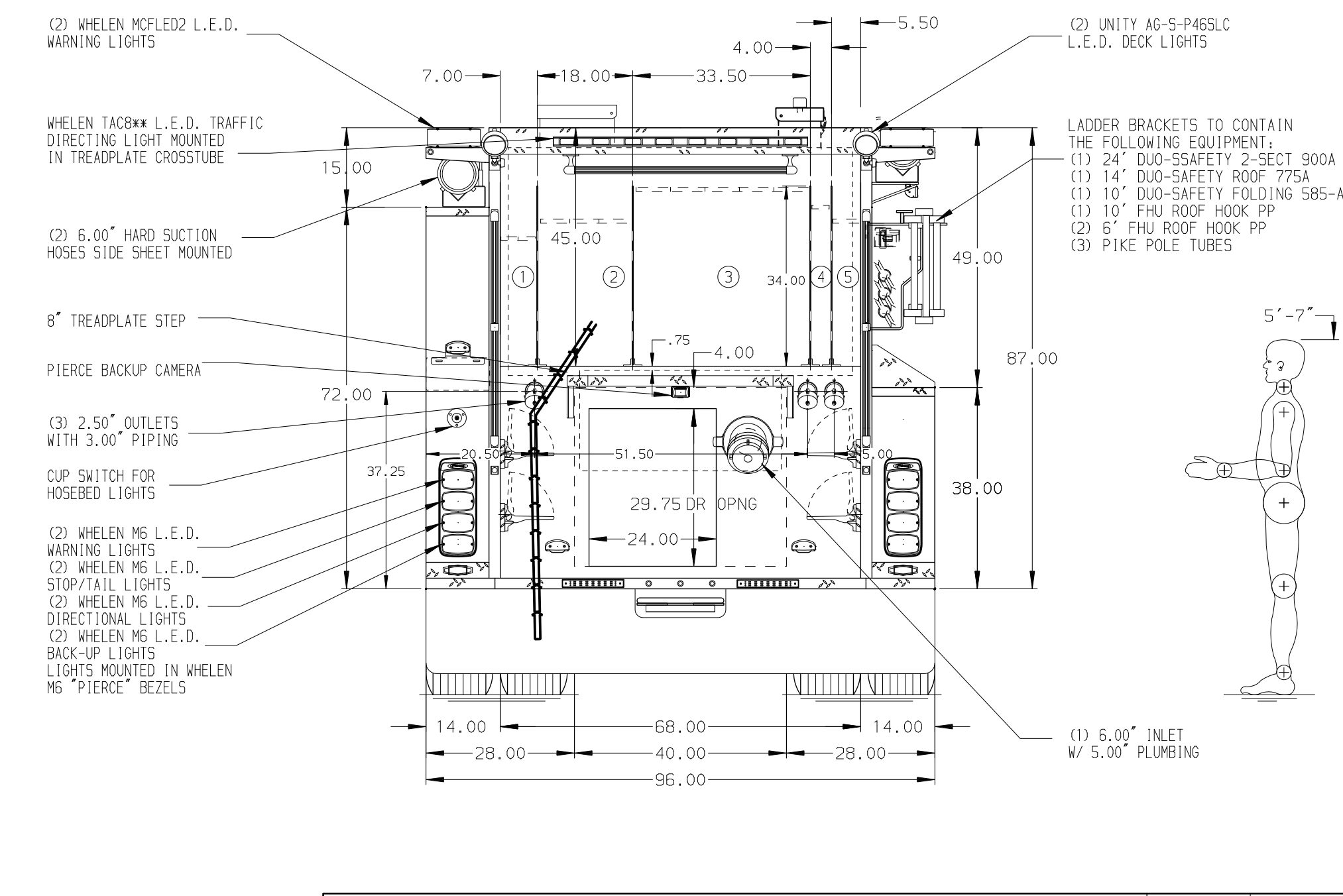
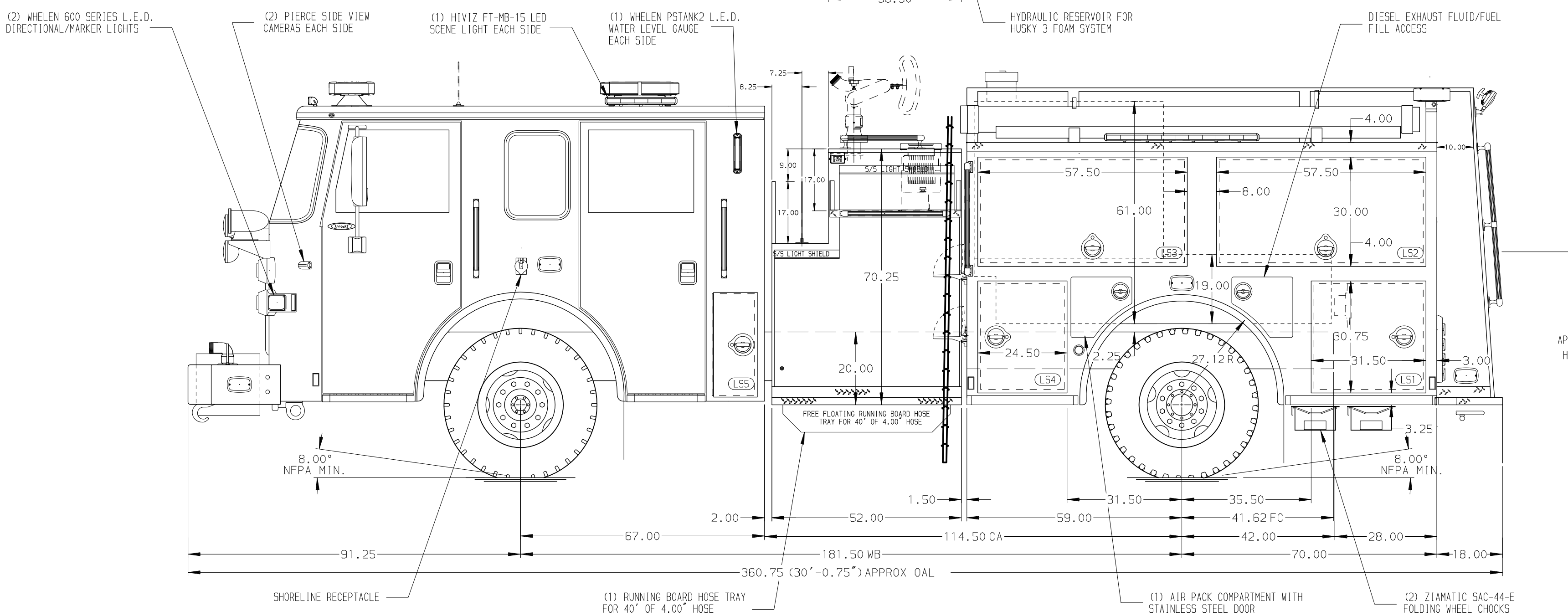


- HOSEBED CAPACITIES**
- ① - 400' OF 1.75" D.J. POLY HOSE (DOUBLE STACK)
  - ② - 600' OF 3.00" D.J. POLY HOSE
  - ③ - 1250' OF 4.00" D.J. POLY HOSE
  - ④ - 250' OF 1.75" D.J. POLY HOSE (SINGLE STACK)
  - ⑤ - 200' OF 2.50" D.J. POLY HOSE (SINGLE STACK)



ALUMINUM BODY

MAXIMUM O.A.L. 365.00"

MAXIMUM O.A.H. 116.00"

**NOTE**  
DIMENSIONS SHOWN ARE APPROXIMATE AND ARE SUBJECT TO MINOR DEVIATIONS AS MAY OCCUR OR BE NECESSARY IN CONSTRUCTION. MINOR DETAILS NOT SHOWN.

1. KUSSMAN BATTERY CHARGER LOCATED BEHIND DRIVERS SEAT
2. S/S STL SCUFFPLATE ON BEAVERTAILS
3. REVERSED HINGED DOOR ON COMPARTMENTS LS4 AND RS2
4. KEYPED LOCK FOR LATCH FOR COMPARTMENTS PER SHOP ORDER
5. TWO FULL WIDTH/DEPTH ADJUSTABLE SHELVES PER SHOP ORDER
6. ALUMINUM GRATINGS PER SHOP ORDER
7. TWO 120V DUPLEX RECEPTACLES LOCATED PER SHOP ORDER
8. AIR INLET/OUTLET WITH DISCONNECT FITTING LOCATED ON PUMP OPERATOR PANEL

13DEC21	JJB	ZWE		
15NOV21	JJB	ZWE	CHASSIS	
28OCT21	JJB	ZWE	DATA	
24SEP21	JJB	ZWE	MAKE	
08JUL21	CDU	CZA	PIERCE	
07JUL21	JJB	CDU	MODEL	
REV	DATE	BY	CH	ARROW XT

		JOB NO.	36380
		SCALE	1:24
<b>TITLE</b> 1500-D-750P, 725G WATER W/25G FOAM, 129" BODY LADDERS ON P5 BRACKET, (2) XLAYS, HSH MOUNTED ON SS	<b>FOR</b> BAY DISTRICT VFD, INC. CALIFORNIA, MARYLAND	DRAWN BY	JJB
		CHECKED BY	CDU
		SHEET SIZE	D
DWG NO.	36380AD	SHEET NO.	1 OF 1