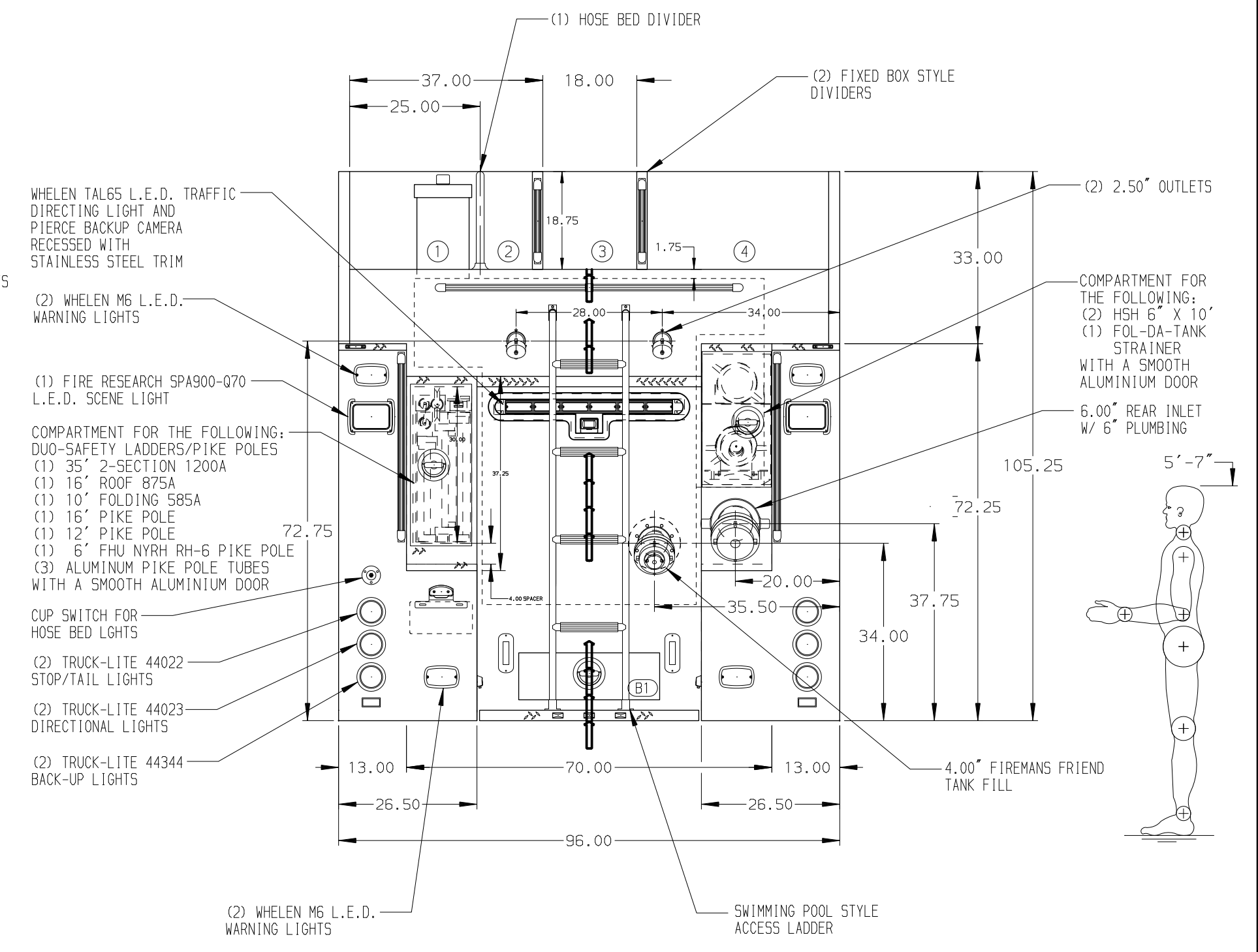


- HOSEBED CAPACITIES**
- ① 450' OF 3.00" HOSE
 - ② 300' OF 1.75" HOSE
 - ③ 250' OF 2.50" HOSE
 - ④ WALKWAY
 - ⑤ 1000' OF 5.00" HOSE



ALUMINUM BODY

NOTE
DIMENSIONS SHOWN ARE APPROXIMATE AND ARE SUBJECT TO MINOR DEVIATIONS AS MAY OCCUR OR BE NECESSARY IN CONSTRUCTION. MINOR DETAILS NOT SHOWN.

1. BATTERY CHARGER LOCATED IN COMPARTMENT LS4
2. BATTERY CHARGER INDICATOR LOCATED AT DRIVER'S SIDE STEP AREA
3. L.E.D. LIGHTS ON SIDES OF THE HOSE BED
4. DRIP PAN GUARD LOCATED ON ALL ROLL UP DOORS
5. DUAL L.E.D. LIGHT STRIPS ON ALL SIDE BODY COMPARTMENTS
6. ONE FULL WIDTH/DEPTH ADJUSTABLE SHELF IN COMPARTMENTS LS1, LS2, LS3, LS4, RS1 AND RS4
7. ONE FLOOR MOUNTED SLIDE-OUT TRAY IN COMPARTMENTS LS1, LS4, RS1 AND RS4
8. ALUMINUM PEGBOARD ON BACK WALL OF COMPARTMENTS LS4, RS2 AND RS3
9. HOSE STORAGE RACK WITH ADJUSTABLE DIVIDERS FOR ROLLED HOSE IN COMPARTMENT LS4

| REV | DATE | BY | CH | ENFORCER |
|---------|------|-----|----|----------|
| 17NOV21 | SAM | DTJ | | MAKE |
| 20OCT21 | JRO | DTS | | PIERCE |
| 30AUG21 | SAM | CZA | | MODEL |

| | | | |
|---------|--|------------|-----------|
| | | JOB NO. | 36398 |
| | | SCALE | DATE |
| TITLE | 2000-D-2030P, 2000G WATER/30G FOAM, 211" TANKER BODY SPEEDLAY, LADDERS BTWN TANK & SS, HUSKY FOAM SYSTEM | DRAWN BY | SAM |
| FOR | COTTAGE GROVE FIRE DEPARTMENT COTTAGE GROVE, WISCONSIN | CHECKED BY | CZA |
| DWG NO. | 36398AD | SHEET SIZE | SHEET NO. |
| | | D | 1 OF 1 |