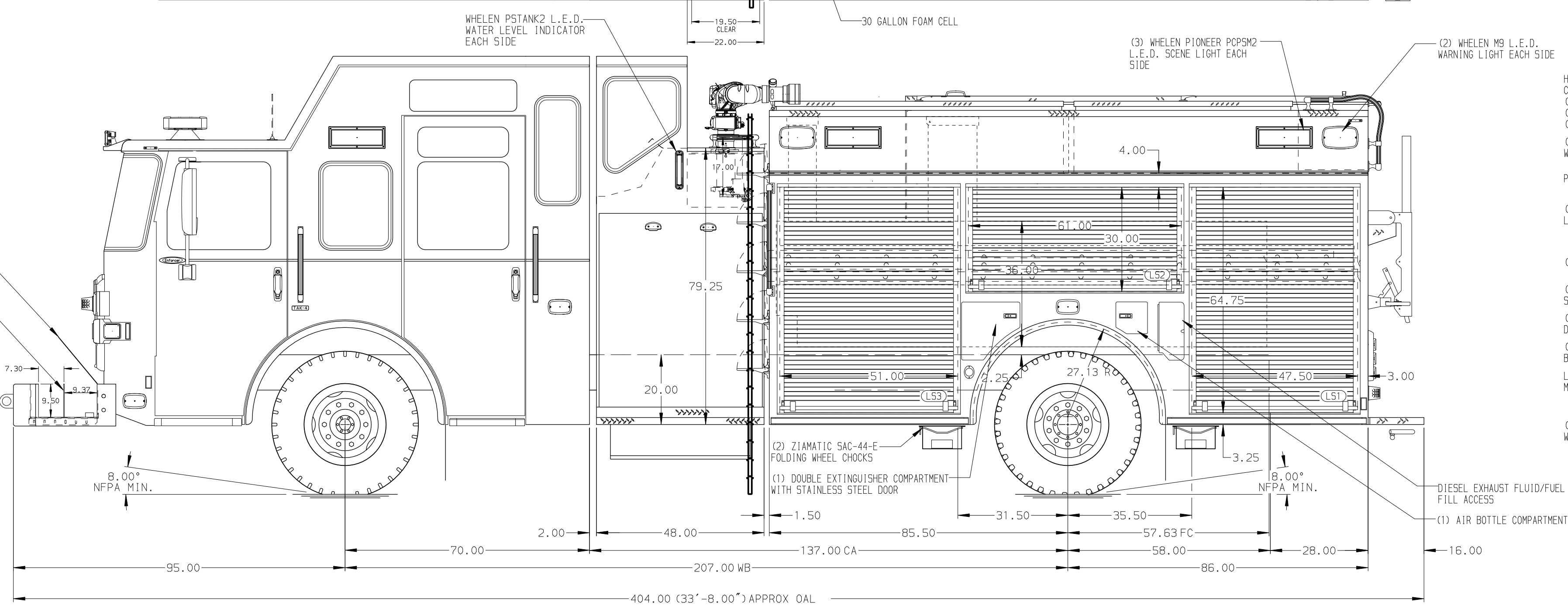
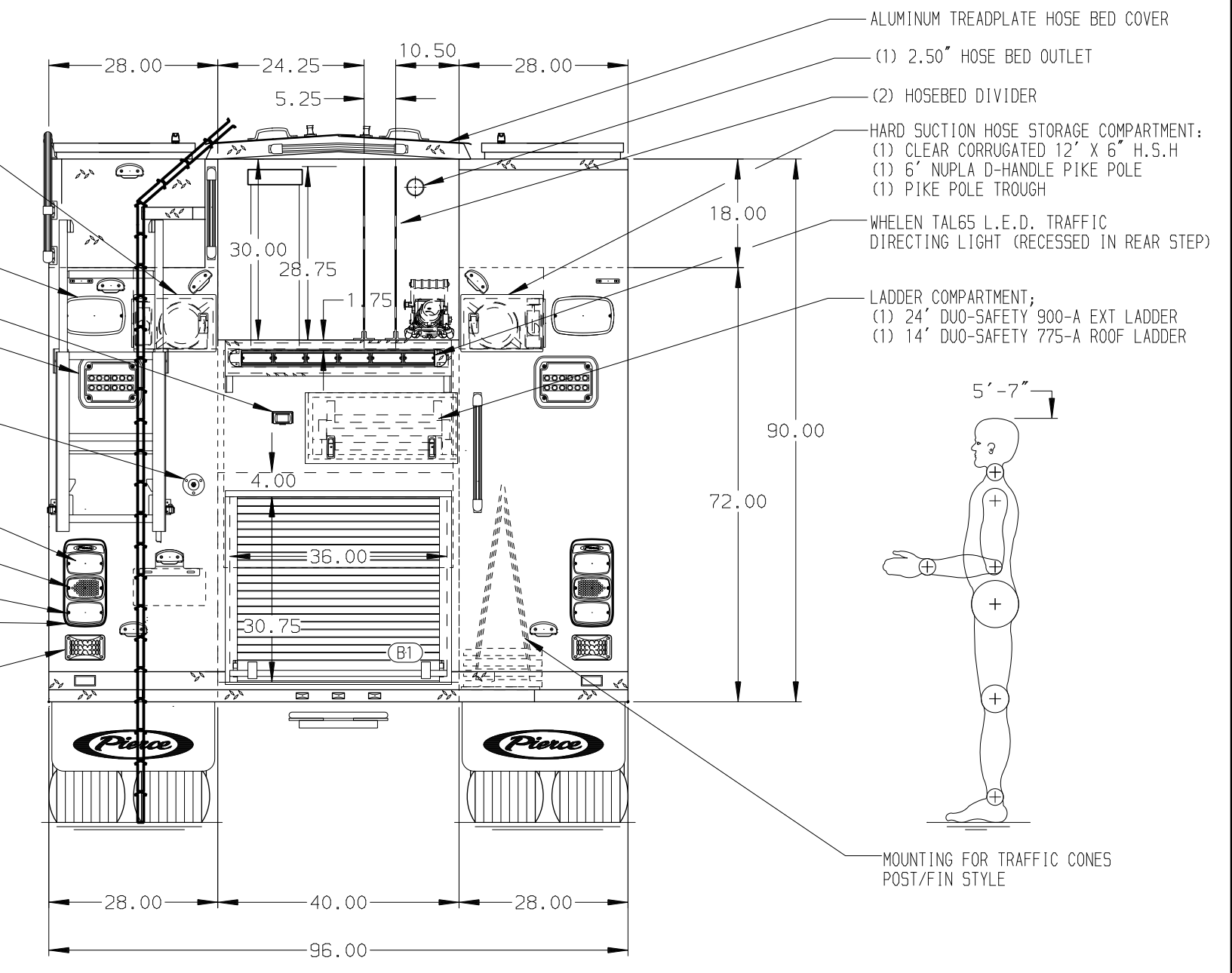


- HOSEBED CAPACITIES**
- ① - 1000' OF 5.00" DJP HOSE
 - ② - 300' OF 2.50" DJP HOSE
 - ③ - 500' OF 2.50" DJP HOSE WITH PRECONNECTED (CTF) BLITZFIRE MONITOR



- HARD SUCTION HOSE STORAGE COMPARTMENT:**
- (1) CLEAR CORRUGATED 12" X 6" H.S.H
 - (1) 8" NUP/A D-HANDLE PIKE POLE
 - (1) PIKE POLE TROUGH
- (2) WHELEN M9 L.E.D. WARNING LIGHTS
- PIERCE BACKUP CAMERA
- (1) HIZIV FT-65M L.E.D. SCENE LIGHT
- (1) CUPSWITCH FOR HOSEBED LIGHTING
- (2) WHELEN M6 L.E.D. STOP/TAIL LIGHTS
- (2) WHELEN M6 L.E.D. DIRECTIONAL LIGHTS
- (2) WHELEN M6 L.E.D. BACK-UP LIGHTS
- LIGHTS MOUNTED IN WHELEN M6 "PIERCE" BEZELS
- (2) WHELEN 68B L.E.D. WARNING LIGHTS



ALUMINUM BODY SIDE ROLL AND FRONTAL IMPACT PROTECTION

NOTE
DIMENSIONS SHOWN ARE APPROXIMATE AND ARE SUBJECT TO MINOR DEVIATIONS AS MAY OCCUR OR BE NECESSARY IN CONSTRUCTION. MINOR DETAILS NOT SHOWN.

1. BATTERY CHARGER LOCATED BEHIND DRIVER'S SEAT
2. BATTERY CHARGER INDICATOR LOCATED ON DRIVER'S SEAT RISER
3. DUAL L.E.D. LIGHT STRIPS LOCATED IN HOSE BED
4. NINE FULL WIDTH/DEPTH ADJUSTABLE SHELVES IN COMPARTMENTS; LOCATED PER OPTION LIST
5. THREE FLOOR MOUNTED SLIDE-OUT TRAYS IN COMPARTMENTS; LOCATED PER OPTION LIST
6. SLIDE-OUT TOOL BOARD WITH PEGBOARD PATTERN IN COMPARTMENTS; LOCATED PER OPTION LIST
7. SWING-OUT TOOL BOARD WITH PEGBOARD PATTERN IN COMPARTMENTS; LOCATED PER OPTION LIST
8. TWO VERTICAL PARTITION IN COMPARTMENTS; LOCATED PER OPTION LIST
9. ONSPOT AUTOMATIC TIRE CHAINS
10. ONE LITTLE GIANT LADDER IN COMPARTMENT; LOCATED PER OPTION LIST
11. ONE RECEPTICAL IN COMPARTMENT; LOCATED PER OPTION LIST
12. ONE TILT/SLIDE OUT TRAY IN COMPARTMENT; LOCATED PER OPTION LIST
13. SHORELINE RECEPTACLE WITH KUSSMAUL SUPER AUTO-EJECT LOCATED ON DS PUMP PANEL
14. AIR INLET WITH KUSSMAUL AIR-EJECT AND WEATHERPROOF COVER LOCATED ON DS PUMP PANEL

REV	DATE	BY	CH	ENFORCER
180CT21	JRC	CW1	MAKE	
03SEP21	JRC	CW1	PIERCE	
4JUN21	JRC	PHA	MODEL	

		JOB NO.	36400
		SCALE	DATE
TITLE	1750-D-530P, 500G WATER W/ 30G FOAM, 171" BODY FHD FRONT & REAR, DELUGE, HATCHES, LADDER TUNNEL	DRAWN BY	JRC
FOR	OKOTOKS FIRE DEPARTMENT OKOTOKS, ALBERTA - CANADA	CHECKED BY	PHA
DWG NO.	36400AD	SHEET SIZE	SHEET NO.
		D	1 OF 1