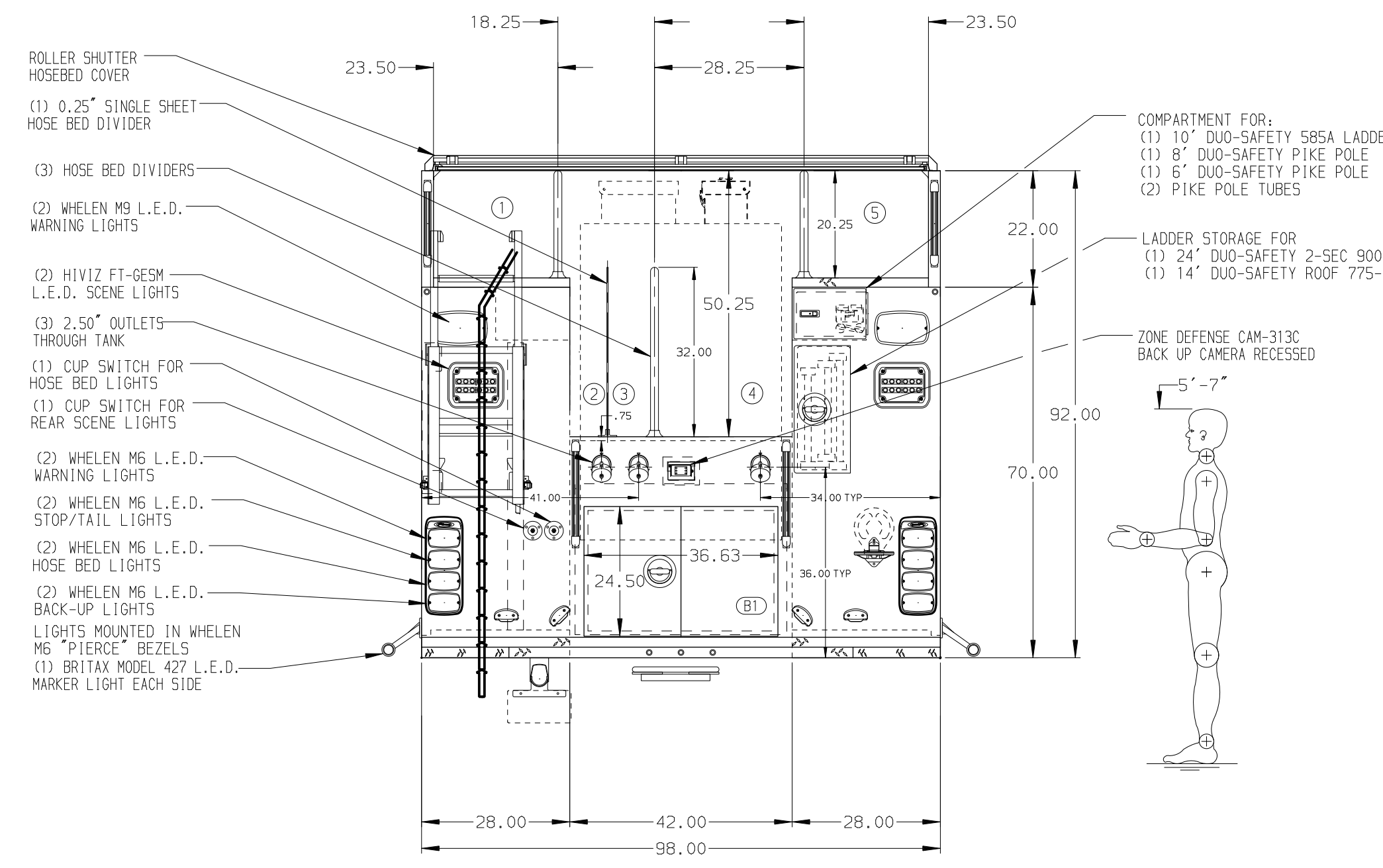
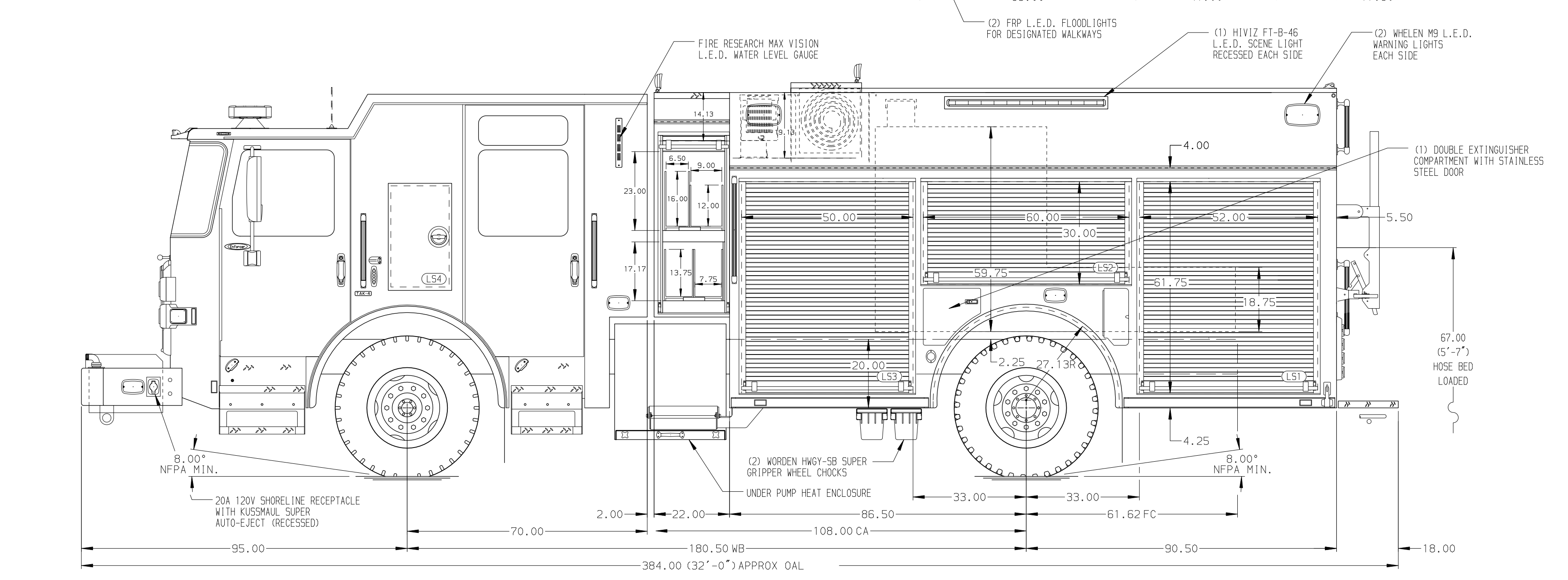


- HOSEBED CAPACITIES
- ① OPEN
  - ② 300' OF 1.75\"/>
  - ③ 300' OF 1.75\"/>
  - ④ 800' OF 5.00\"/>
  - ⑤ 500' OF 2.50\"/>



ALUMINUM BODY

SIDE ROLL AND FRONTAL IMPACT PROTECTION

**NOTE**  
DIMENSIONS SHOWN ARE APPROXIMATE AND ARE SUBJECT TO MINOR DEVIATIONS AS MAY OCCUR OR BE NECESSARY IN CONSTRUCTION. MINOR DETAILS NOT SHOWN.

1. DUAL L.E.D. LIGHT STRIPS LOCATED IN HOSE BED
2. ELASTIC PULL STRAP ON CROSSLAY DOORS
3. ONE FULL WIDTH/DEPTH ADJUSTABLE SHELF IN COMPARTMENTS LS2,RS1,RS3; TWO IN LS3; THREE IN LS1
4. ONE ADJUSTABLE TILTING SLIDE-OUT TRAY IN COMPARTMENT LS1
5. ONE FLOOR MOUNTED SLIDE-OUT TRAY WITH SIDE SLIDES IN COMPARTMENTS RS1,RS3
6. ONE FLOOR MOUNTED SLIDE-OUT TRAY IN COMPARTMENTS RS1,RS3
7. SLIDE-OUT TOOL BOARD WITH PEGBOARD PATTERN IN COMPARTMENT LS1
8. ROLL-OUT PROTECTIVE FLAP FOR BODY PANEL LOCATED RS2
9. ONE VERTICAL PARTITION IN COMPARTMENT LS1
10. ALUMINUM PEGBOARD ON BACK WALL OF COMPARTMENTS LS3

11. AIR BOTTLE HOLDER WITH TRACKS IN COMPARTMENT RS2
12. KUSSMAUL BATTERY CHARGER LOCATED ON THE DRIVER'S SEAT RISER
13. KUSSMAUL INVERTER LOCATED ON THE DRIVER'S SEAT RISER
14. LITTLE GIANT LADDER STORAGE ON SHELF IN COMPARTMENT LS2

REV	DATE	BY	CH	ENFORCER
02DEC21	LME	NPE		MAKE
23SEP21	LME	NPE		PIERCE
22JUL21	LME	NPE		MODEL

		JOB NO.	36426
		SCALE	DATE
<b>TITLE</b> 1500-D-530P, 500 WATER W/30 FOAM, 177\"/>	<b>FOR</b> CITY OF MINNETONKA MINNETONKA, MINNESOTA	DRAWN BY	LME 12JUL21
		CHECKED BY	NPE 13JUL21
DWG NO.	36426AD	SHEET SIZE	SHEET NO.
		D	1 OF 1