

PUMPER BODY
Medium Aluminum 2nd Gen Pumper

CHASSIS
Enforcer Chassis

CHASSIS AXLE, FRONT, CUSTOM
18,000 Lb Dana Axle Tak-4

AXLE, REAR
24,000 Lb Dana Axle

ENGINE
450 HP Cummins L9 Engine

TRANSMISSION
Allison 5th Gen, 3000 EVS P

BUMPER
19" Extended Painted Steel

CAB
6000 Enforcer Cab

BODY WATER TANK
500 Gallon Poly Water Tank

COMPT, PUMPER, REAR
37.75" FF RollUp Rear Compt

COMPT, PUMPER, LEFT SIDE
152" RollUp Full Height Front & Rear FDLR

COMPT, PUMPER, RIGHT SIDE
152" RollUp Full Height Front & Rear FDLR

FIRE SUPPRESSION PUMPHOUSE
45" Control Zone Side Mount

PUMP
1500 GPM Hale QMAX

CROSSLAYS, 1.50"
(2) 1.50" Standard Capacity

CROSSLAYS, 2.50"
2.50" Crosslay Not Required

SPEEDLAYS
Speedlays Not Required

GENERATOR
Generator Not Required

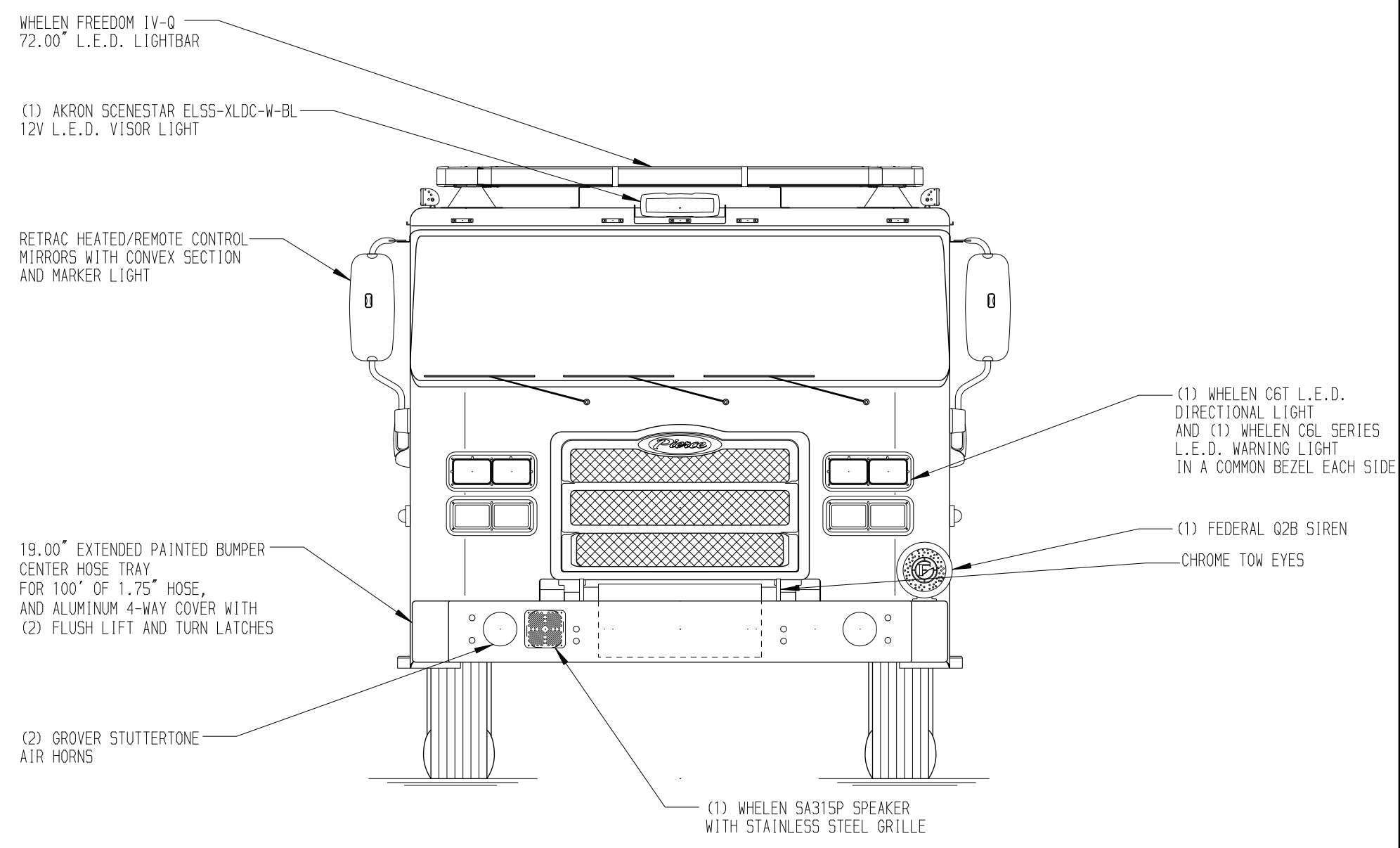
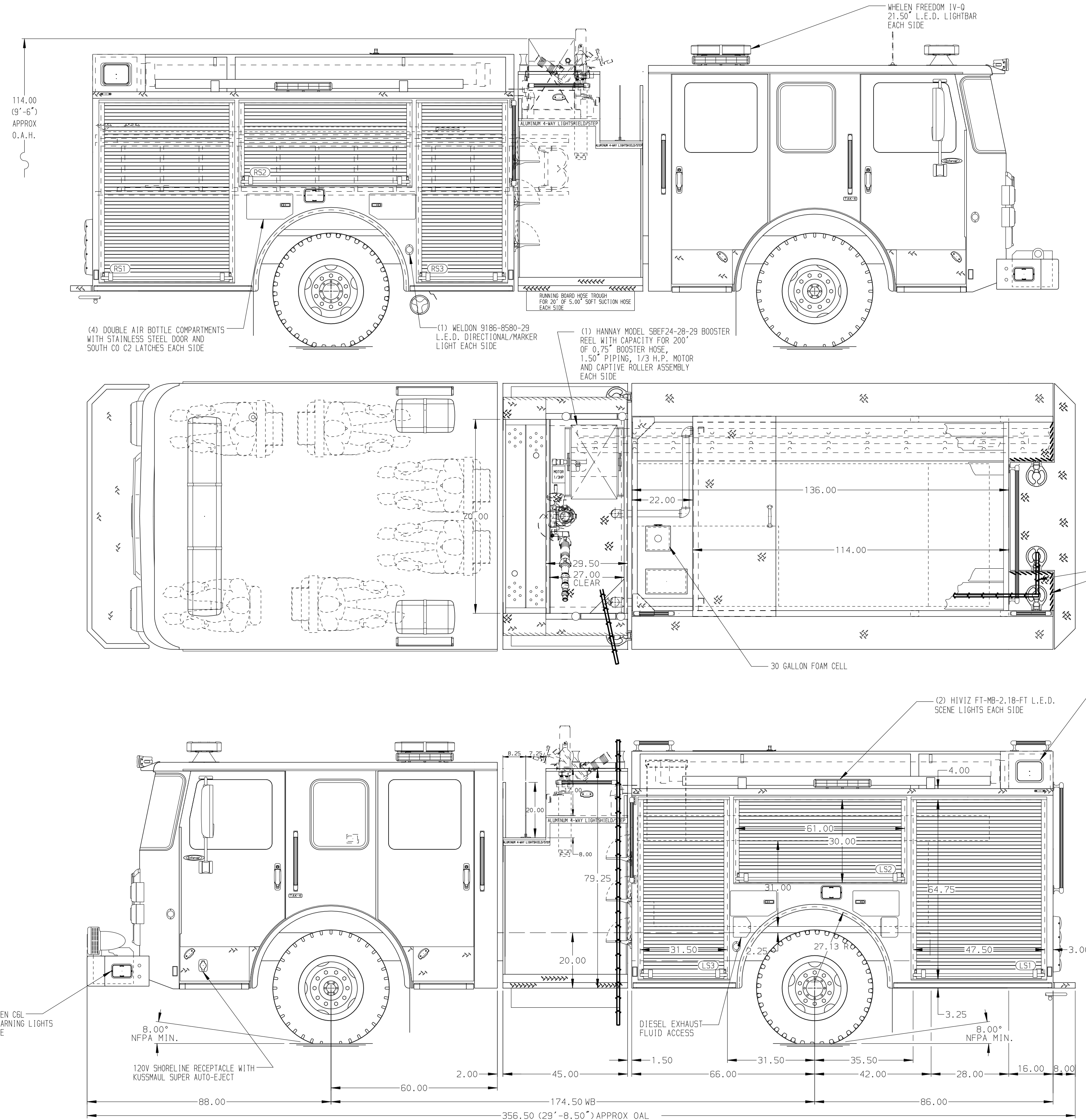
Foam System
Foam System Not Required

Foam Cell
30 Gal Foam Cell Not Reduce

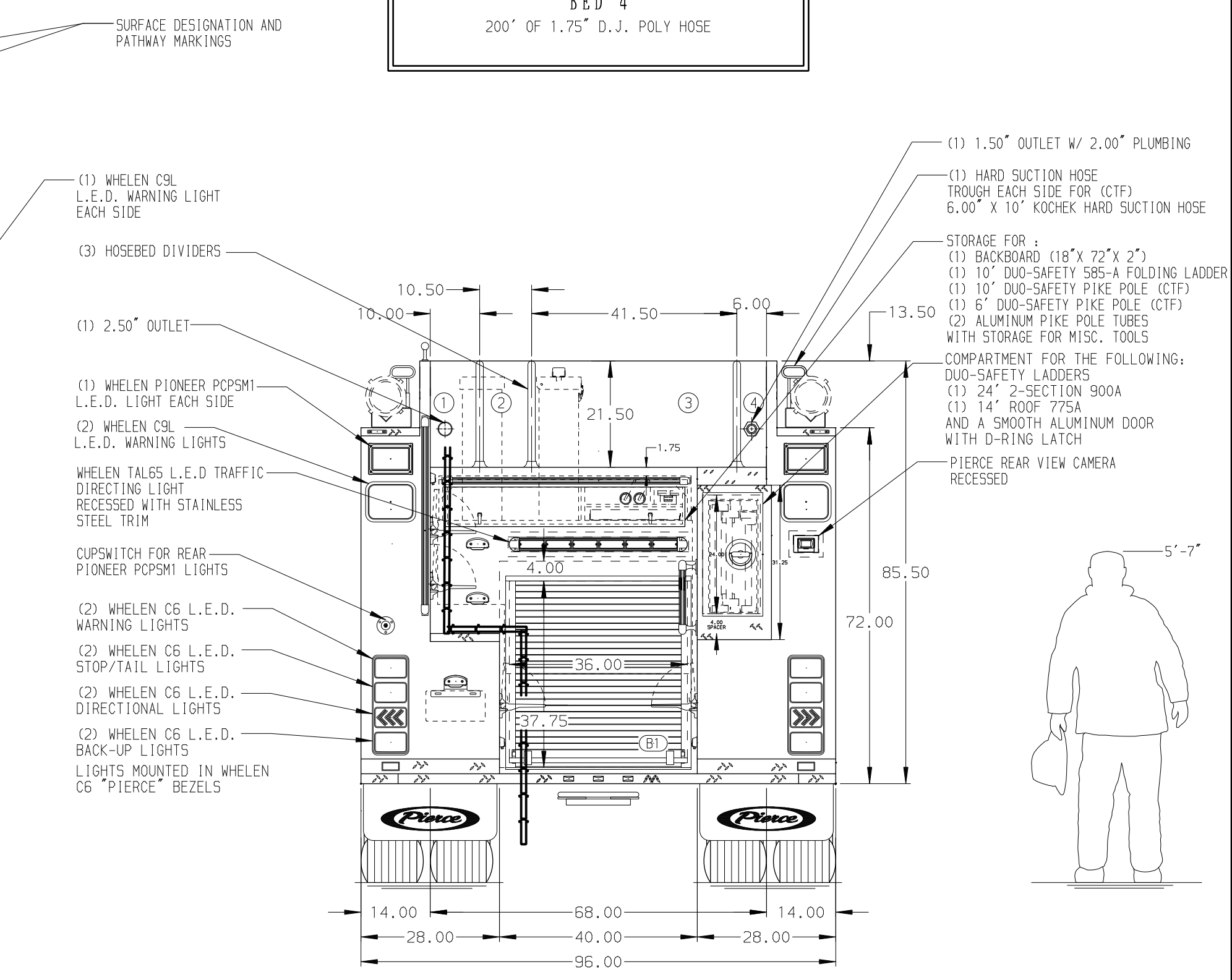
NOTE
DIMENSIONS SHOWN ARE APPROXIMATE AND ARE SUBJECT TO MINOR DEVIATIONS AS MAY OCCUR OR BE NECESSARY IN CONSTRUCTION. MINOR DETAILS NOT SHOWN.

- ONE 1.50" OUTLET WITH 2.00" PIPING AND SWIVEL LOCATED IN CENTER BUMPER TRAY
- SHORELINE RECEPTACLE WITH KUSSNAUL SUPER AUTO-EJECT LOCATED ON DRIVER SIDE OF THE CAB
- AIR INLET/OUTLET WITH TRI-FLATE FEMALE DISCONNECT COUPLER LOCATED DS PUMP PANEL
- BATTERY CHARGER LOCATED IN COMPARTMENT PER SHOP ORDER
- BATTERY CHARGE INDICATOR LOCATED ON THE DRIVER SIDE SEAT RISER
- EIGHT ADJUSTABLE SHELVES IN COMPARTMENTS PER SHOP ORDER
- ONE SWING-OUT TOOLBOARD IN COMPARTMENT PER SHOP ORDER
- PEG BOARD ON BACK WALL IN COMPARTMENT PER SHOP ORDER

MAXIMUM O.A.H. - 114.00" MAXIMUM O.A.L. - 360.00"



HOSEBED CAPACITY	
BED 1	200' OF 2.50" D.J. POLY HOSE
BED 2	200' OF 2.50" D.J. POLY HOSE
BED 3	1000' OF 5.00" D.J. POLY HOSE
BED 4	200' OF 1.75" D.J. POLY HOSE



REV	DATE	BY	CH	ENFORCER
260CT21	MMF	SMA		
30SEP21	MMF	SMA		

	JOB NO.	36513-01-04
	SCALE	DATE
TITLE	Pierce Pumper Approval Drawing	DRAWN BY
FOR	Mobile Fire Rescue	CHECKED BY
DWG NO.	36513AD-SH1	SHEET SIZE
		SHEET NO.
		1 OF 2