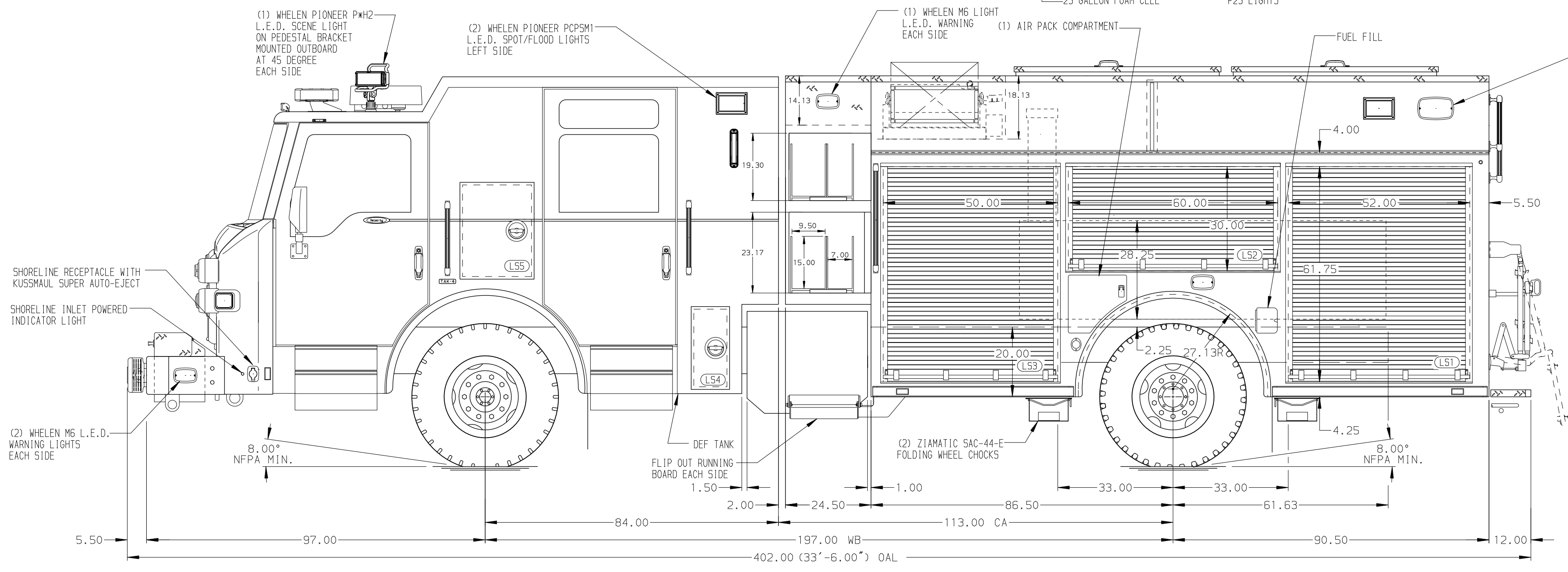
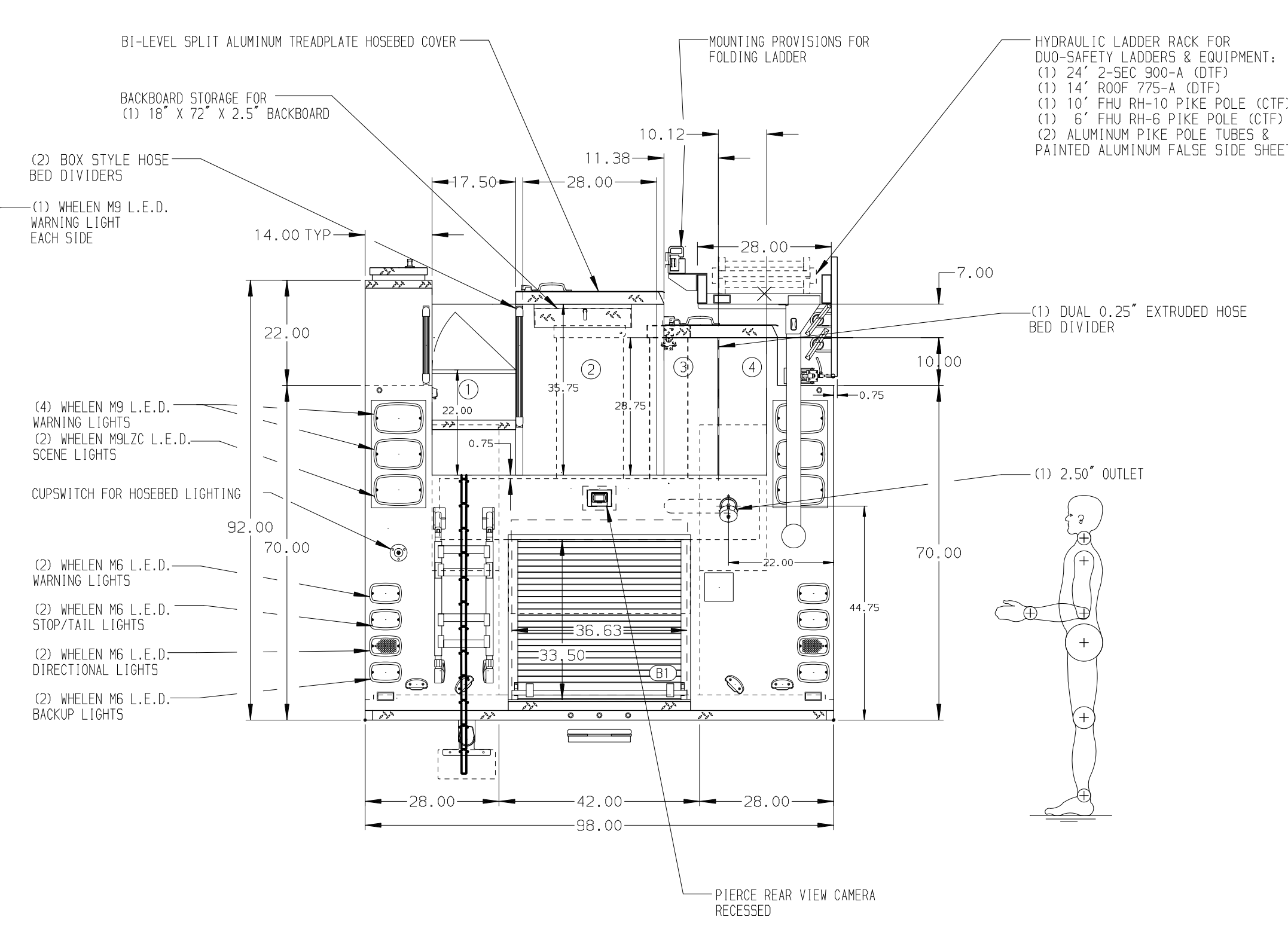


- HOSEBED CAPACITIES**
- ① 17.50' EMPTY BED FOR WALKWAY
 - ② - 1000' OF 5.00" HI-VOL HOSE
 - ③ - 500' OF 2.50" D.J. HOSE
 - ④ - 500' OF 2.50" D.J. HOSE



ALUMINUM BODY

SIDE ROLL AND FRONTAL IMPACT PROTECTION

NOTE
DIMENSIONS SHOWN ARE APPROXIMATE AND ARE SUBJECT TO MINOR DEVIATIONS AS MAY OCCUR OR BE NECESSARY IN CONSTRUCTION. MINOR DETAILS NOT SHOWN.

- 1. ONSPOT AUTOMATIC TIRE CHAINS TO BE PROVIDED AT THE REAR
- 2. AIR INLET W/DISCONNECT COUPLING ON THE DRIVER'S SEAT RISER
- 3. AIR OUTLET W/ SHUT OFF VALVE ON D.S. PUMP PANEL
- 4. BATTERY CHARGER LOCATED BEHIND DRIVER SEAT
- 5. BATTERY CHARGER INDICATOR LOCATED NEAR DRIVER'S SEAT RISER WITH BRACKET
- 6. WHELEN 7006LZR L.E.D. LIGHT LOCATED AT THE FRONT OF THE HOSE BED
- 7. STAINLESS STEEL SCUFFPLATE ON BODY REAR CORNERS
- 8. VOGEL LUBE SYSTEM

| REV | DATE | BY | CH | VELOCITY FR |
|---------|------|-----|----|--------------|
| 06DEC21 | LME | SMA | | CHASSIS DATA |
| 14OCT21 | JRO | SMA | | MAKE |
| 12AUG21 | LME | SMA | | PIERCE |
| 04AUG21 | LME | SMA | | MODEL |

| | | | |
|---------|--|------------|-------------|
| | | JOB NO. | 36531 |
| | | SCALE | DATE |
| TITLE | 1250-D-525P, 500G WATER, 25G FOAM, 177" PUC PUMPER (4) CROSSLAYS, DELUGE, HUSKY 12, HYD. LADDER RACK | DRAWN BY | LME 20JUL21 |
| FOR | WEST METRO FIRE RESCUE LITTLETON, COLORADO | CHECKED BY | SMA 21JUL21 |
| DWG NO. | 36531AD-SH1 | SHEET SIZE | SHEET NO. |
| | | D | 1 OF 2 |