

**PUMPER  
BODY**

Medium Aluminum 2nd Gen Pumper

**CHASSIS**

Enforcer Chassis

**CHASSIS  
AXLE, FRONT, CUSTOM**

20,000 Lb Dana Axle

**AXLE, REAR**

27,000 Lb Dana Axle

**ENGINE**

505 HP DD13 Engine

**TRANSMISSION**

Allison 5th Gen, 4000 EVS P

**BUMPER**

10" Extended Stainless Steel

**CAB**

7010 Enforcer Cab

**BODY**

**WATER TANK**

750 Gallon New York Style Water Tank

**COMPT, PUMPER, REAR**

30.75" FF RollUp Rear Compt

**COMPT, PUMPER, LEFT SIDE**

152" RollUp Full Height Front & Rear, FDLER

**COMPT, PUMPER, RIGHT SIDE**

152" Lap Low, FDLER

**FIRE SUPPRESSION  
PUMPHOUSE**

48" Control Zone Side Mount

**PUMP**

1500 GPM Hale QMAX

**CROSSLAYS, 1.50"**

(2) 1.50" Standard Capacity

**CROSSLAYS, 2.50"**

(1) 200' of 2.50" DeadLay

**SPEEDLAYS**

SpeedLays Not Required

**GENERATOR**

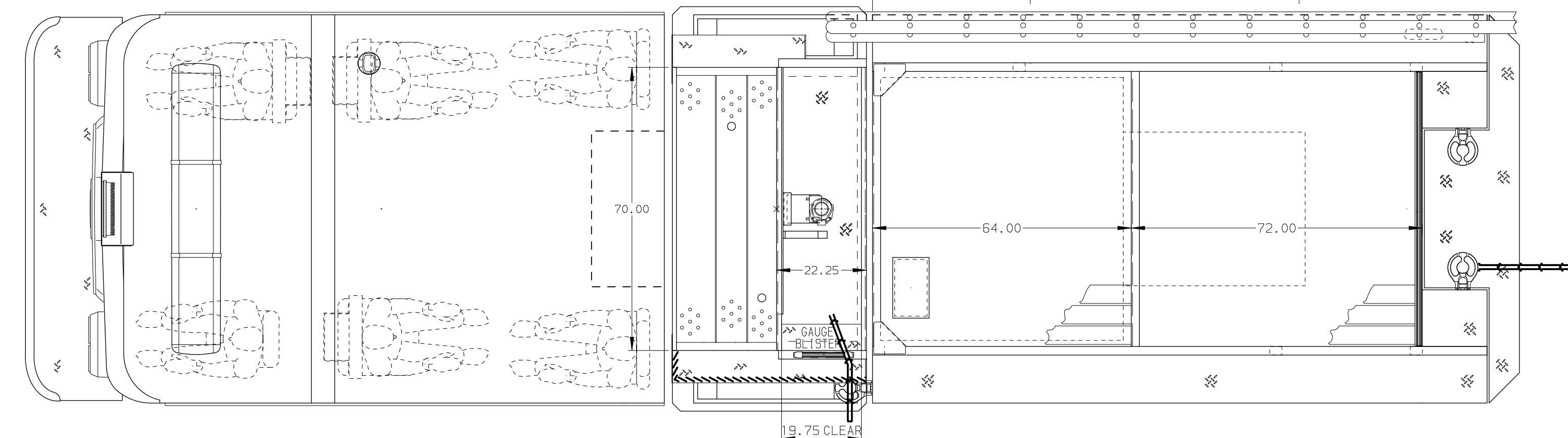
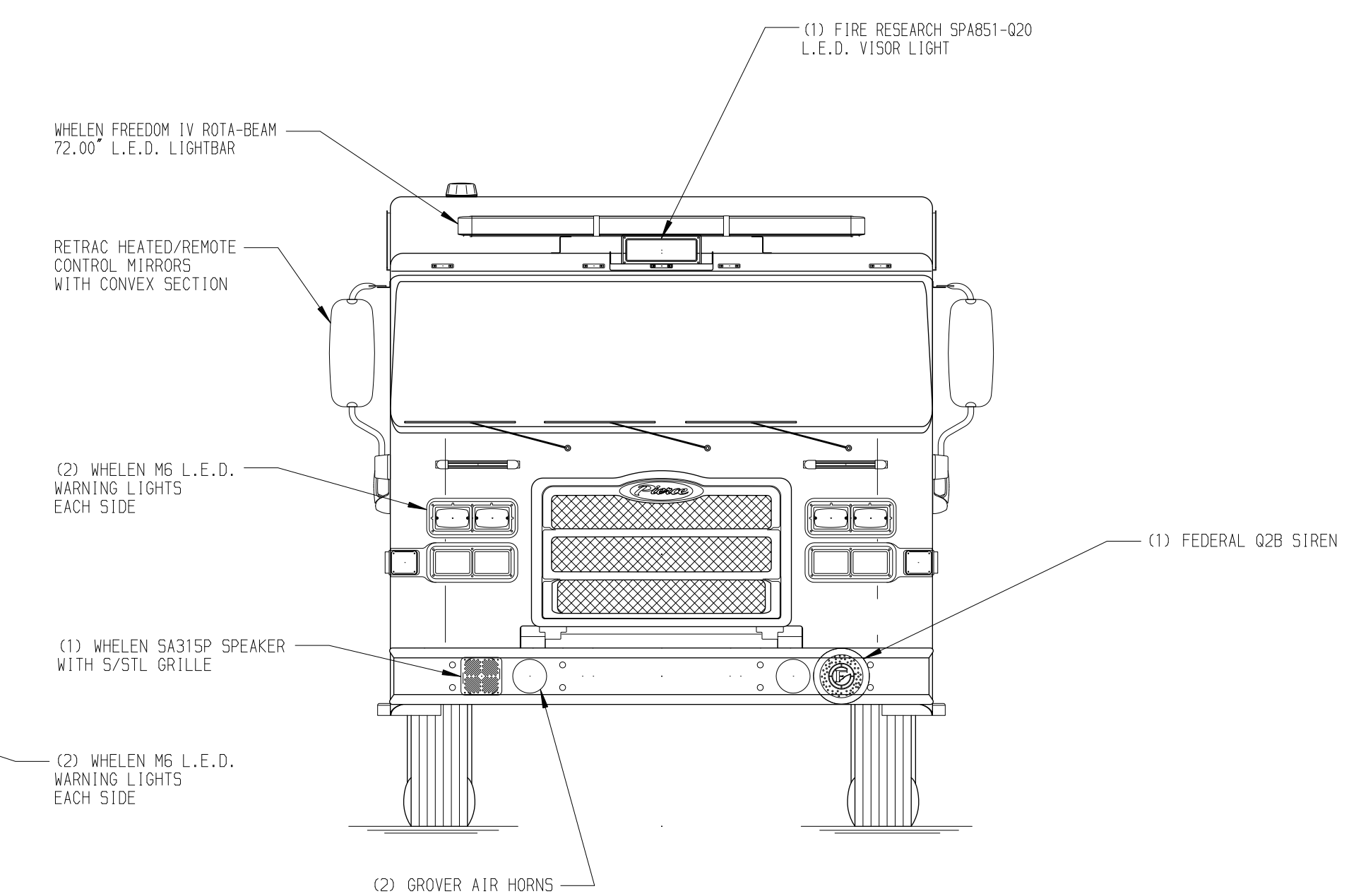
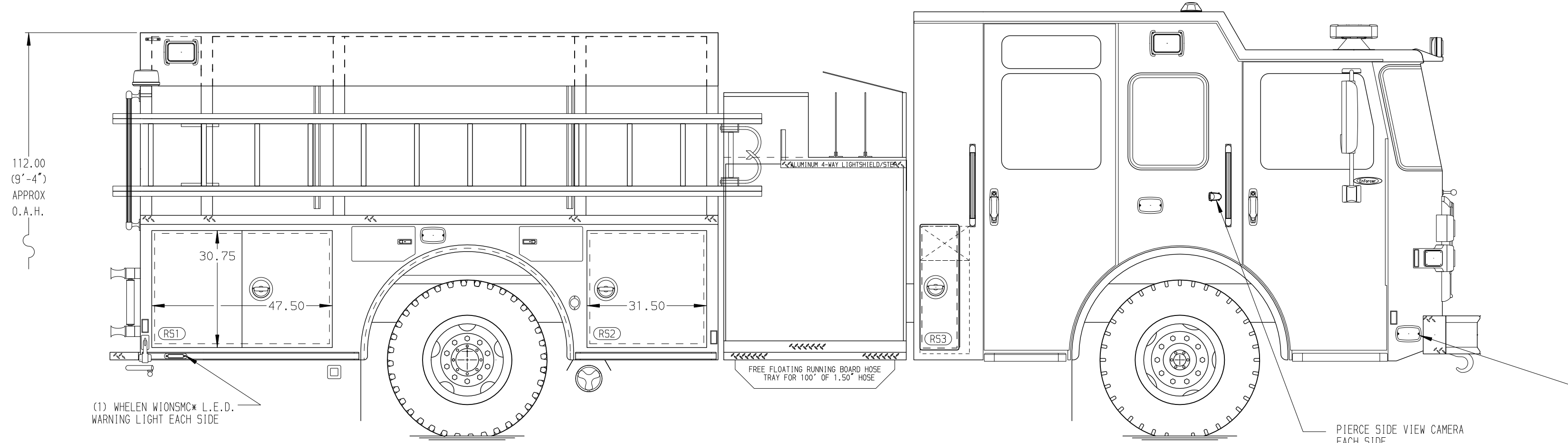
Generator Not Required

**Foam System**

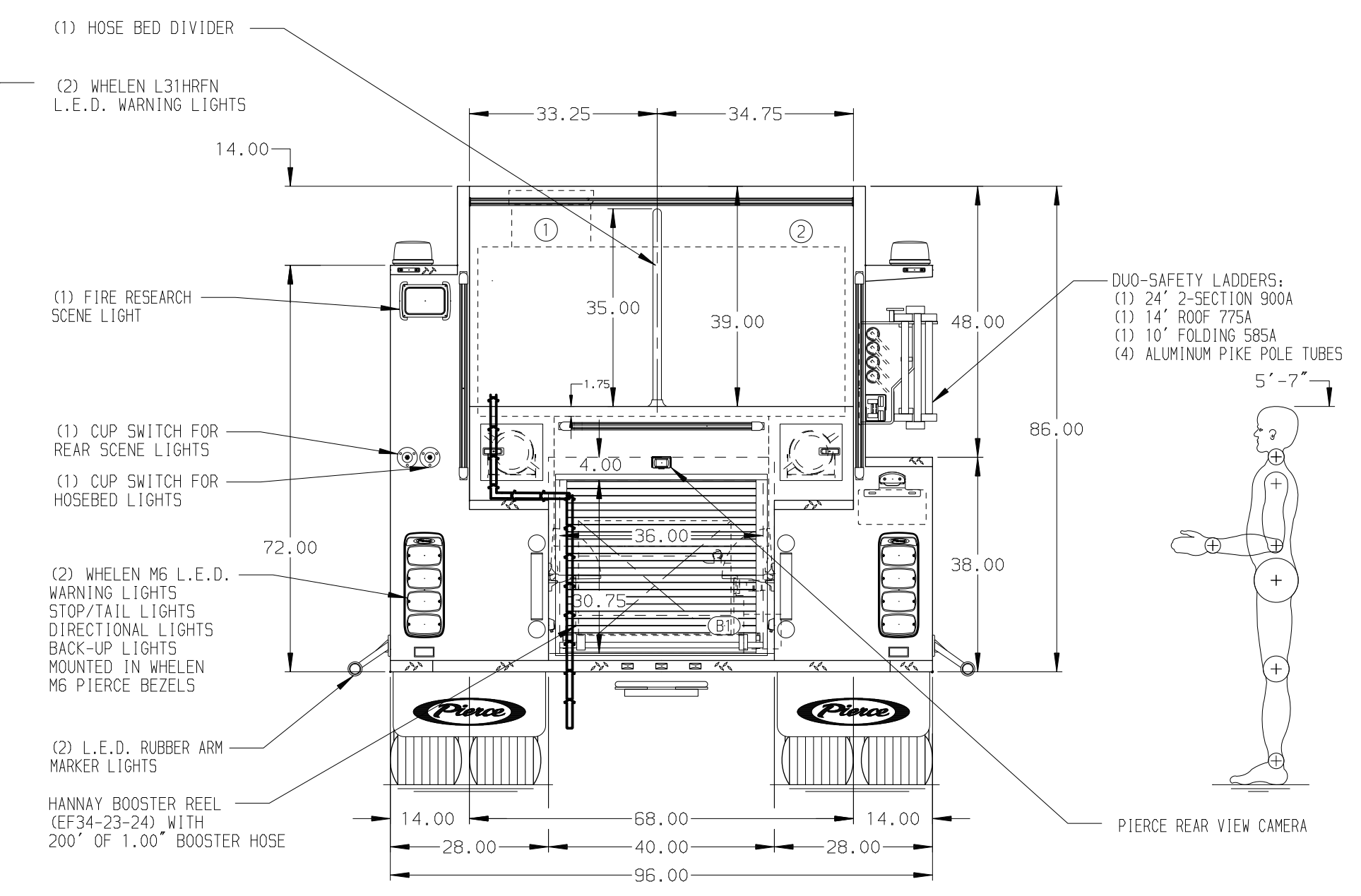
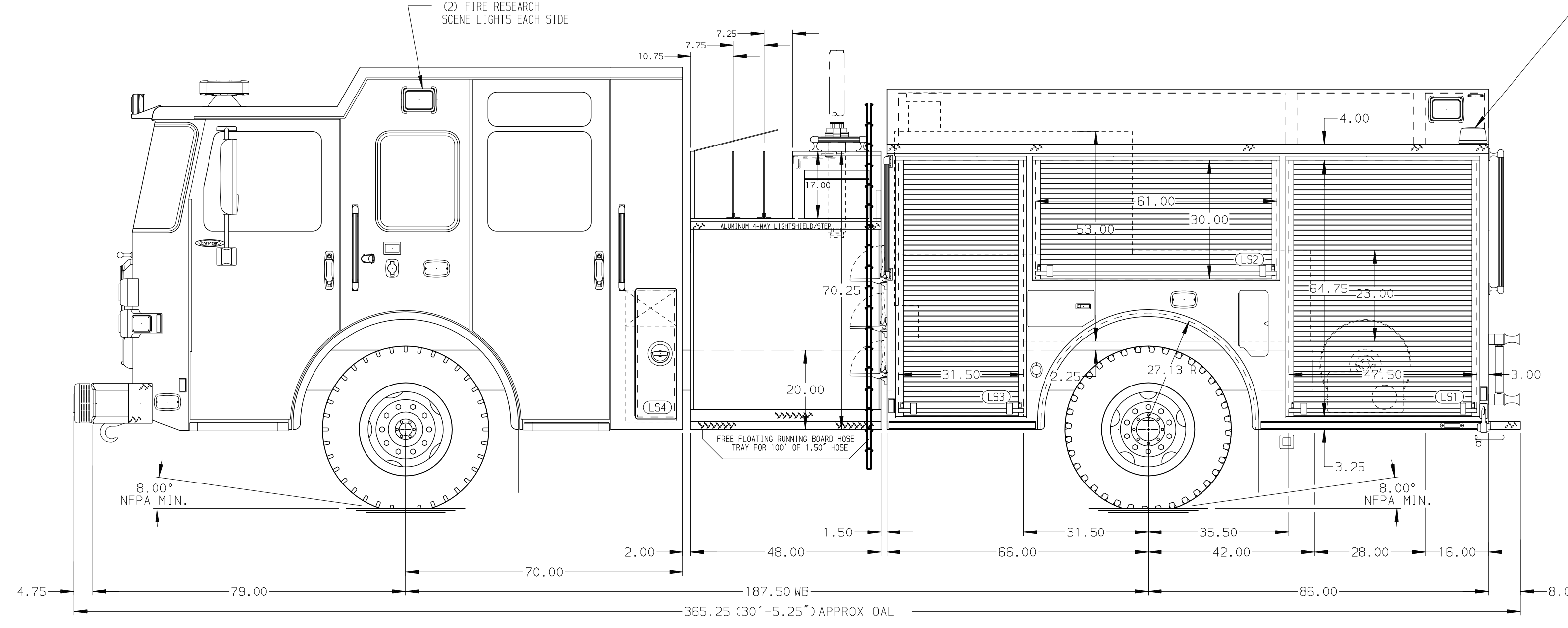
Foam System Not Required

**Foam Cell**

Foam Cell Not Required



HOSEBED CAPACITY	
BED 1	1200' OF 2.50" D.J. POLY HOSE
BED 2	1000' OF 5.00" D.J. POLY HOSE



**NOTE**  
DIMENSIONS SHOWN ARE APPROXIMATE AND ARE SUBJECT TO MINOR DEVIATIONS AS MAY OCCUR OR BE NECESSARY IN CONSTRUCTION. MINOR DETAILS NOT SHOWN.

- SHORELINE RECEPTACLE WITH KUSSMALL SUPER AUTO-EJECT LOCATED ON DRIVER SIDE OF THE CAB
- AIR INLET/OUTLET WITH DISCONNECT COUPLING IN THE DRIVER SIDE STEPWELL
- BATTERY CHARGER LOCATED IN COMPARTMENT PER SHOP ORDER
- BATTERY CHARGE INDICATOR LOCATED ON THE DRIVER SIDE OF CAB
- FIVE ADJUSTABLE SHELVES IN COMPARTMENTS PER SHOP ORDER
- FOUR FLOOR MOUNTED SLIDE-OUT TRAY IN COMPARTMENT PER SHOP ORDER
- ONE SWING-OUT TOOL GRID SYSTEM LOCATED IN COMPARTMENT PER SHOP ORDER
- TWO PARTITIONS LOCATED IN COMPARTMENT PER SHOP ORDER
- WHEEL CHOCKS AND MOUNTING PROVIDED BY DEALER

REV	DATE	BY	CH	ENFORCER
31AUG21	MMF	COL		PIERCE
02JUN21	MMF	COL		MODEL

		JOB NO.	36548
		SCALE	DATE
TITLE	Pierce Pumper Approval Drawing	DRAWN BY	MMF
FOR	Rome Fire Department	CHECKED BY	COL
DWG NO.	36548AD	SHEET SIZE	SHEET NO.
		D	1 OF 1