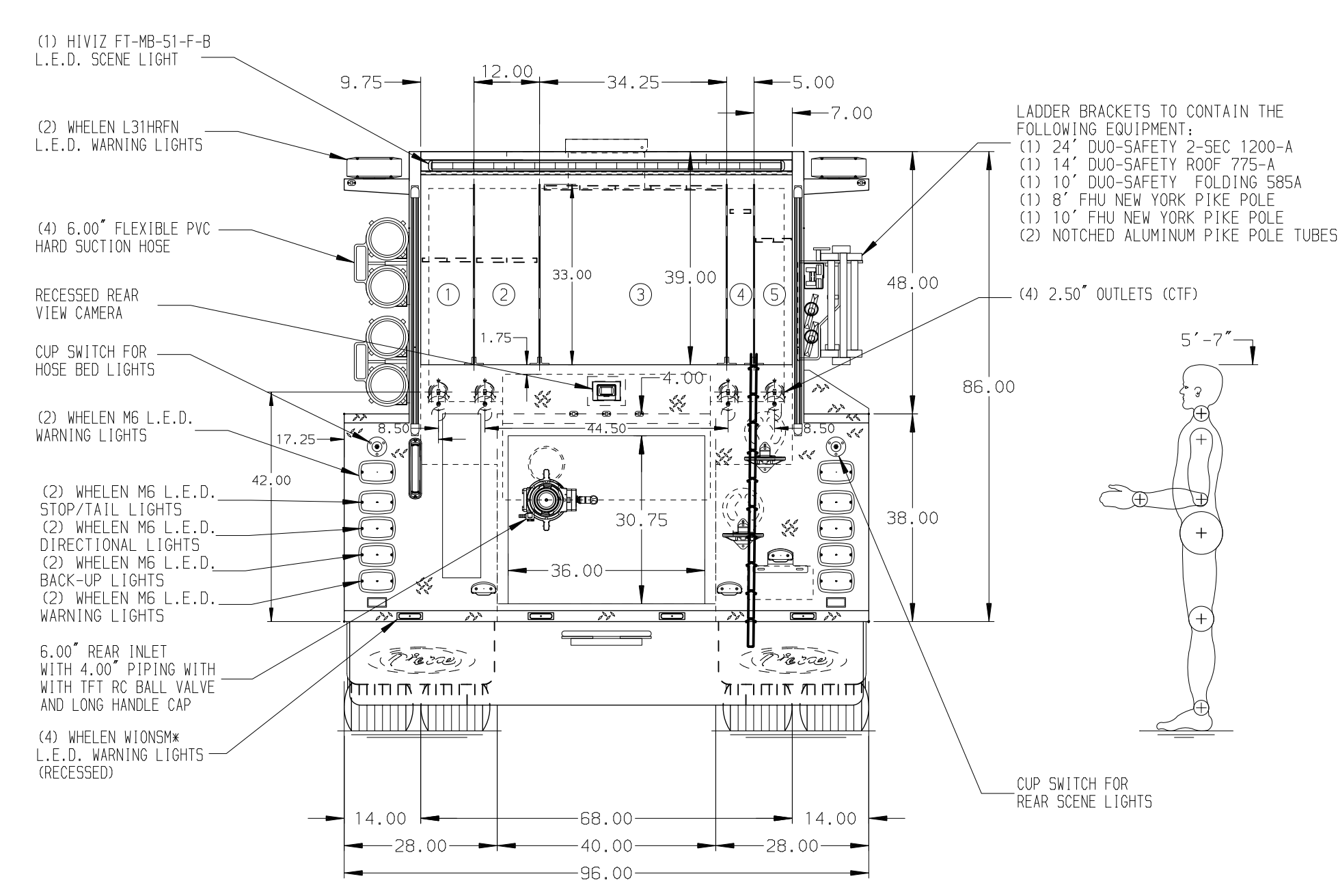
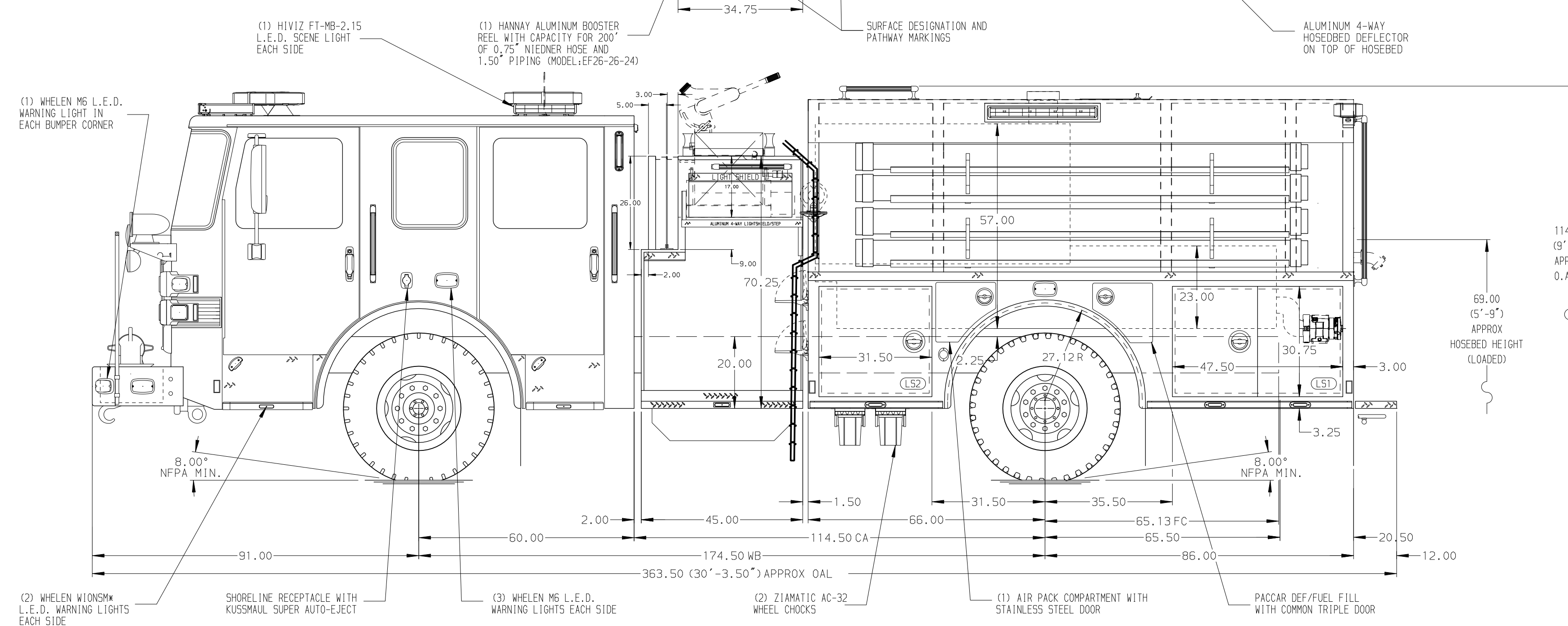


- HOSEBED CAPACITIES
- ① - 300' OF 2.50" D.J. POLY HOSE DOUBLE STACK
 - ② - 300' OF 3.00" D.J. POLY HOSE DOUBLE STACK
 - ③ - 1000' OF 4.00" D.J. POLY HOSE
 - ④ - 250' OF 2.00" D.J. POLY HOSE SINGLE STACK
 - ⑤ - 400' OF 1.50" D.J. POLY HOSE DOUBLE STACK



ALUMINUM BODY

MAXIMUM O.A.L. 369.00"

MAXIMUM O.A.H. 122.00"

NOTE
DIMENSIONS SHOWN ARE APPROXIMATE AND ARE SUBJECT TO MINOR DEVIATIONS AS MAY OCCUR OR BE NECESSARY IN CONSTRUCTION. MINOR DETAILS NOT SHOWN.

- 1. BATTERY CHARGER LOCATED BEHIND OFFICERS SEAT
- 2. BATTERY CHARGER INDICATOR LOCATED ON DRIVER'S SEAT RISER
- 3. TWO FULL WIDTH/DEPTH ADJUSTABLE SHELVES PER SHOP ORDER
- 4. 120V DUPLEX RECEPTACLE PER SHOP ORDER

REV	DATE	BY	CH	ENFORCER
14JAN22	BTH	CW1		CHASSIS DATA
13DEC21	JJB	CW1		MAKE
10DEC21	JJB	CW1		PIERCE
24SEP21	CDU	CZA		MODEL

		JOB NO.	36549
		SCALE	DATE
TITLE	2000-D-1000 GALLON WATER, 152" LOW FDLR BODY SIDE CONTROL, (2) XLYAS, RS LADDER BRACKET, DELUGE		
FOR	BEL ALTON VFD BEL ALTON, MARYLAND		
DWG NO.	36549AD		
DRAWN BY	JJB	CHECKED BY	CDU
DATE	15SEP21	SHEET SIZE	SHEET NO.
	D		1 OF 1