

**RIGHT SIDE COMPARTMENTS CONTAIN THE FOLLOWING:**

**COMPARTMENT R51 CONTAINS:**

- (1) 3-DRAWER TOOL CABINET
- (1) ON-SCENE ADJ SLIDE OUT/TILT TRAY
- (1) RACK FOR 2 EXTINGUISHERS
- (1) VERTICAL COMPARTMENT DIVIDER

**COMPARTMENT R52 CONTAINS:**

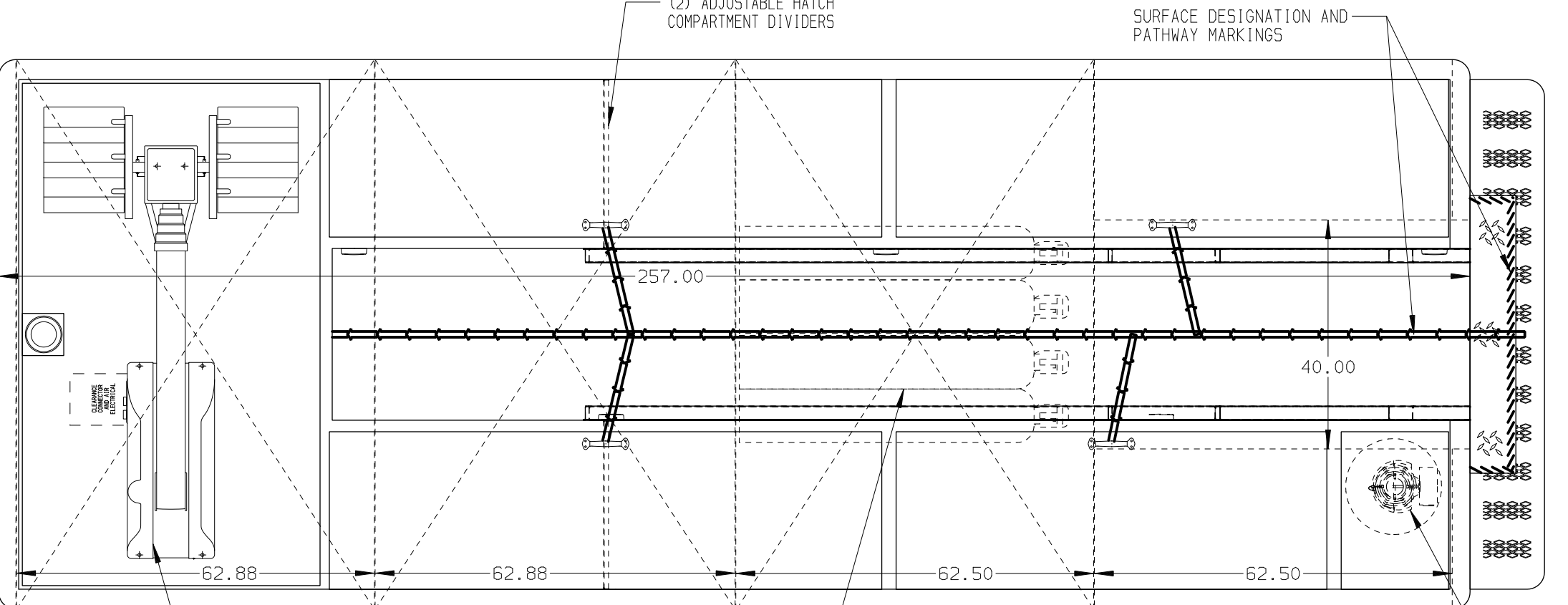
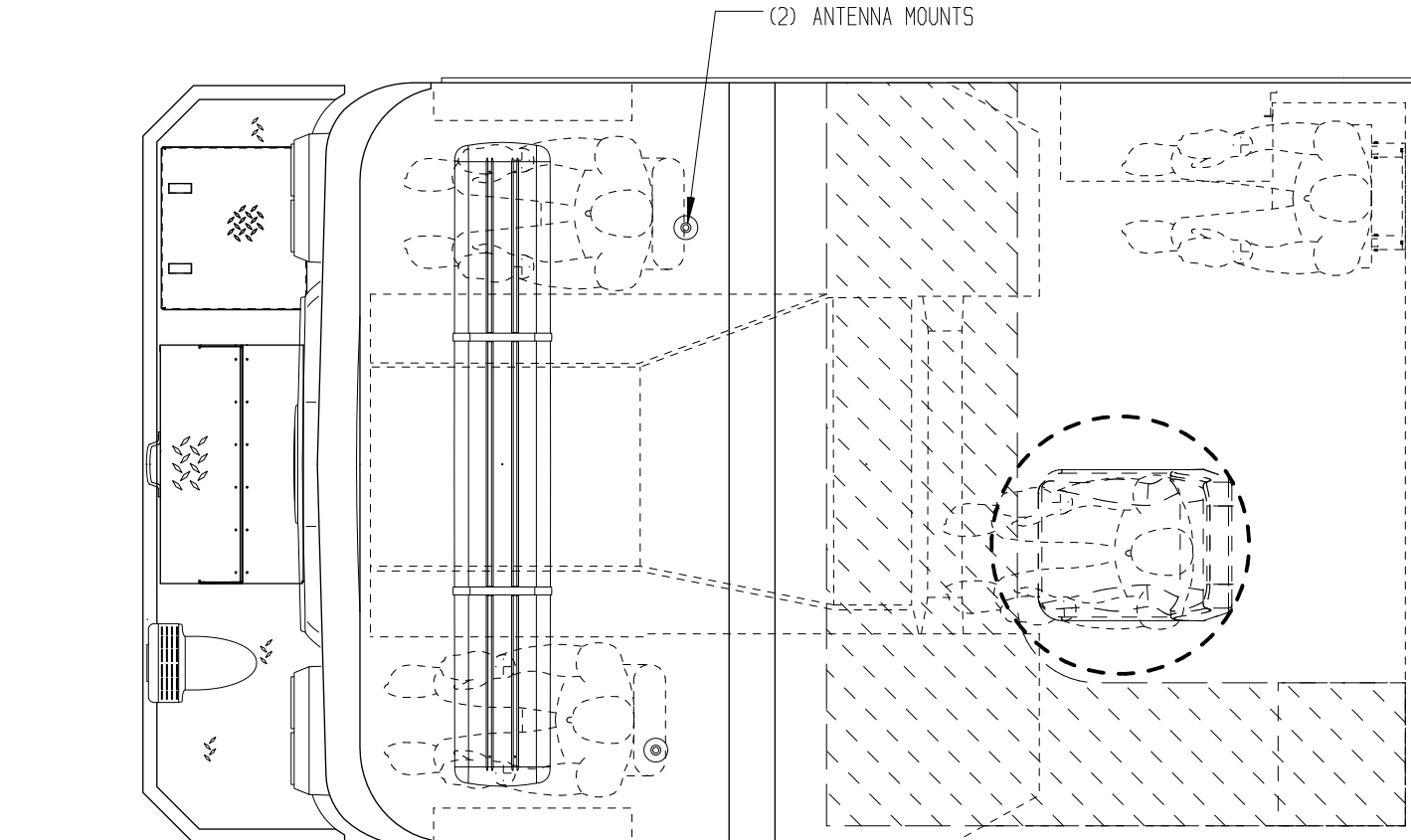
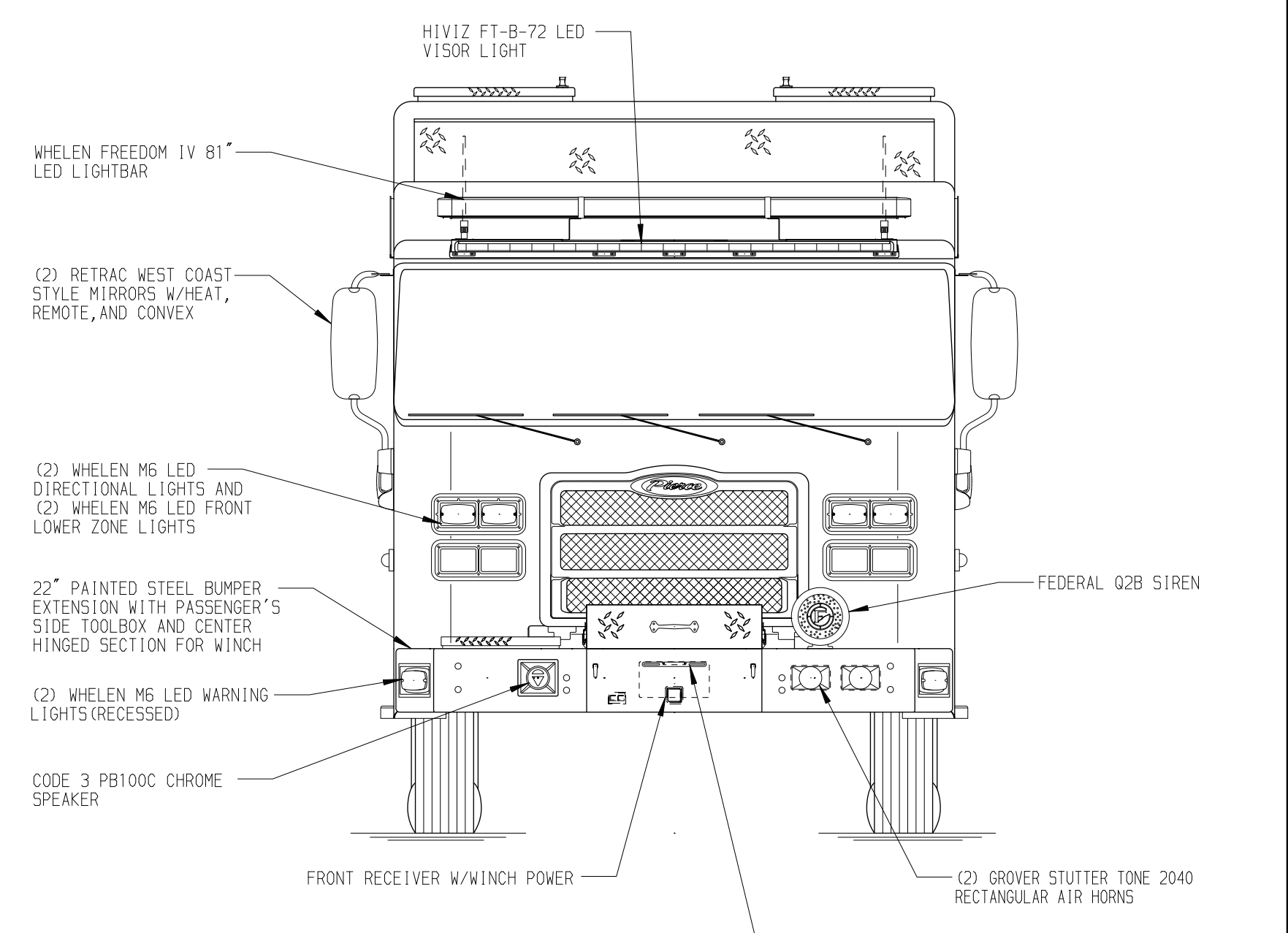
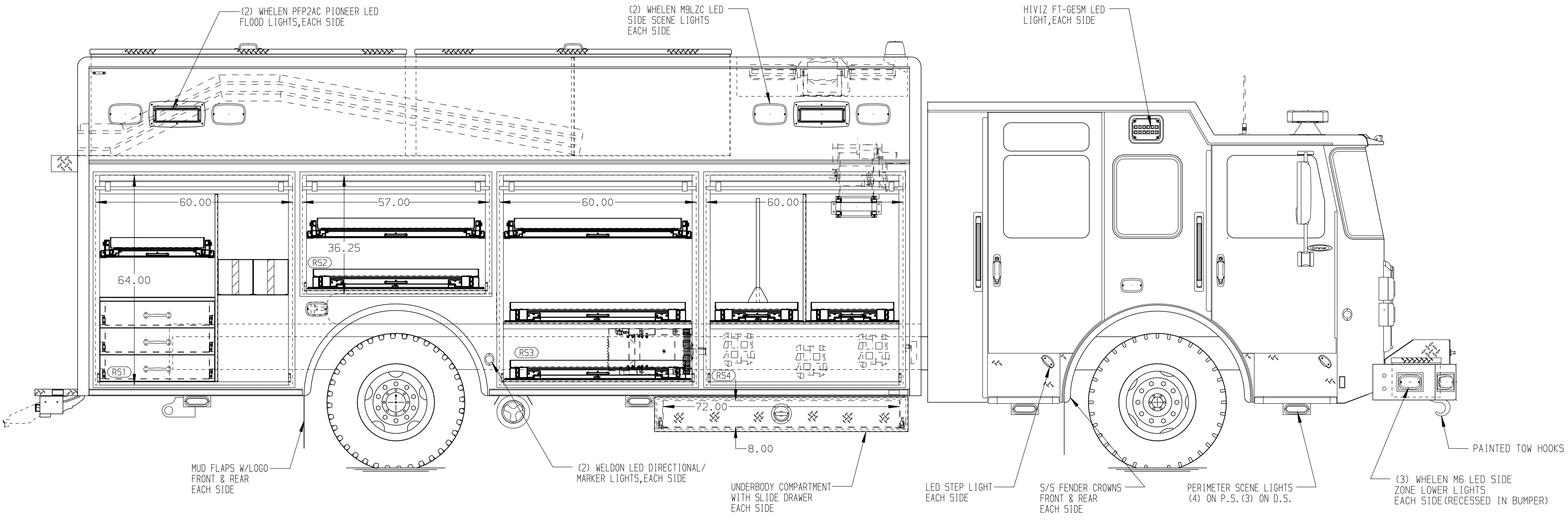
- (1) 1/2 DP ON-SCENE ADJ SLIDE OUT/TILT TRAY
- (1) ON-SCENE FLOOR MTD 2-WAY SLIDE OUT TRAY

**COMPARTMENT R53 CONTAINS:**

- (1) HORIZONTAL FLOOR EXTENSION
- (1) 1/2 DP ON-SCENE ADJ SLIDE OUT/TILT TRAY
- (1) ON-SCENE FLOOR MTD 2-WAY SLIDE OUT TRAY
- (1) ON-SCENE FLOOR MOUNTED SLIDE OUT TRAY

**COMPARTMENT R54 CONTAINS:**

- (1) CAB LIFT CONTROLLER
- (1) VERTICAL COMPARTMENT DIVIDER
- (1) HORIZONTAL FLOOR EXTENSION
- (1) ON-SCENE 2-WAY FLOOR MTD SLIDE OUT TRAY
- (1) ON-SCENE 2-WAY FLOOR MOUNTED SLIDE OUT TRAY WITH TOOLBOARD AND PAC TRAC EACH SIDE
- (1) ELECTRIC CORD REEL WITH 200' OF 10/4 YELLOW CORD
- CARGO RETENTION NETTING
- PAC TRAC ON REAR WALL OF COMPARTMENT



**LEFT SIDE COMPARTMENTS CONTAIN THE FOLLOWING:**

**COMPARTMENT L51 CONTAINS:**

- (1) RACK FOR 10 SCBA BOTTLES WITH NETTING
- (1) CASCADE SYSTEM CONTROL PANEL
- (1) "SPACE SAVER" 2-BOTTLE FILL ENCLOSURE
- (1) CIRCUIT BREAKER PANEL
- (1) GENERATOR METER PANEL
- (1) SUB FEED BOX
- (1) NIGHTSCAN CONTROLLER
- (1) CAMERA MAST CONTROLLER
- (1) LOW PRESSURE AIR REEL WITH 200' OF HOSE (1520-17-18)
- (1) PNEUMATIC MAST COMPRESSOR
- (1) VERTICAL COMPARTMENT DIVIDER
- (1) STD DEPTH ADJ SHELF
- (1) 30A, 240V T.L. RECEPTACLE
- (1) 20A, 120V 6-PLACE RECEPTACLE

**COMPARTMENT L52 CONTAINS:**

- (1) 1/2 DP ON-SCENE ADJ SLIDE OUT/TILT TRAY
- (1) ON-SCENE FLOOR MTD 2-WAY SLIDE OUT TRAY

**COMPARTMENT L53 CONTAINS:**

- (1) HORIZONTAL FLOOR EXTENSION
- (1) 1/2 DP ON-SCENE ADJ SLIDE OUT/TILT TRAY
- (1) ON-SCENE FLOOR MTD 2-WAY SLIDE OUT TRAY
- (1) ON-SCENE FLOOR MOUNTED SLIDE OUT TRAY

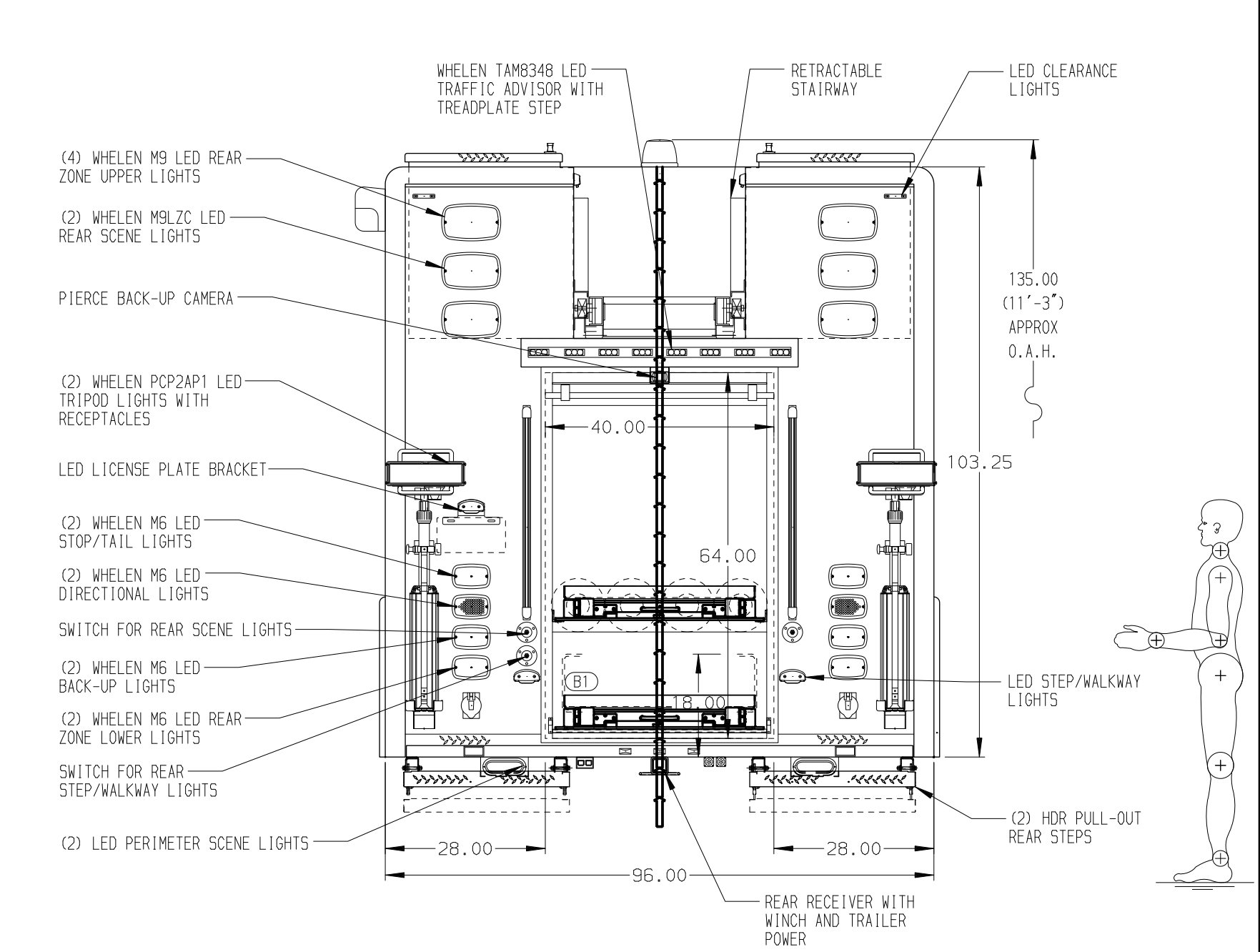
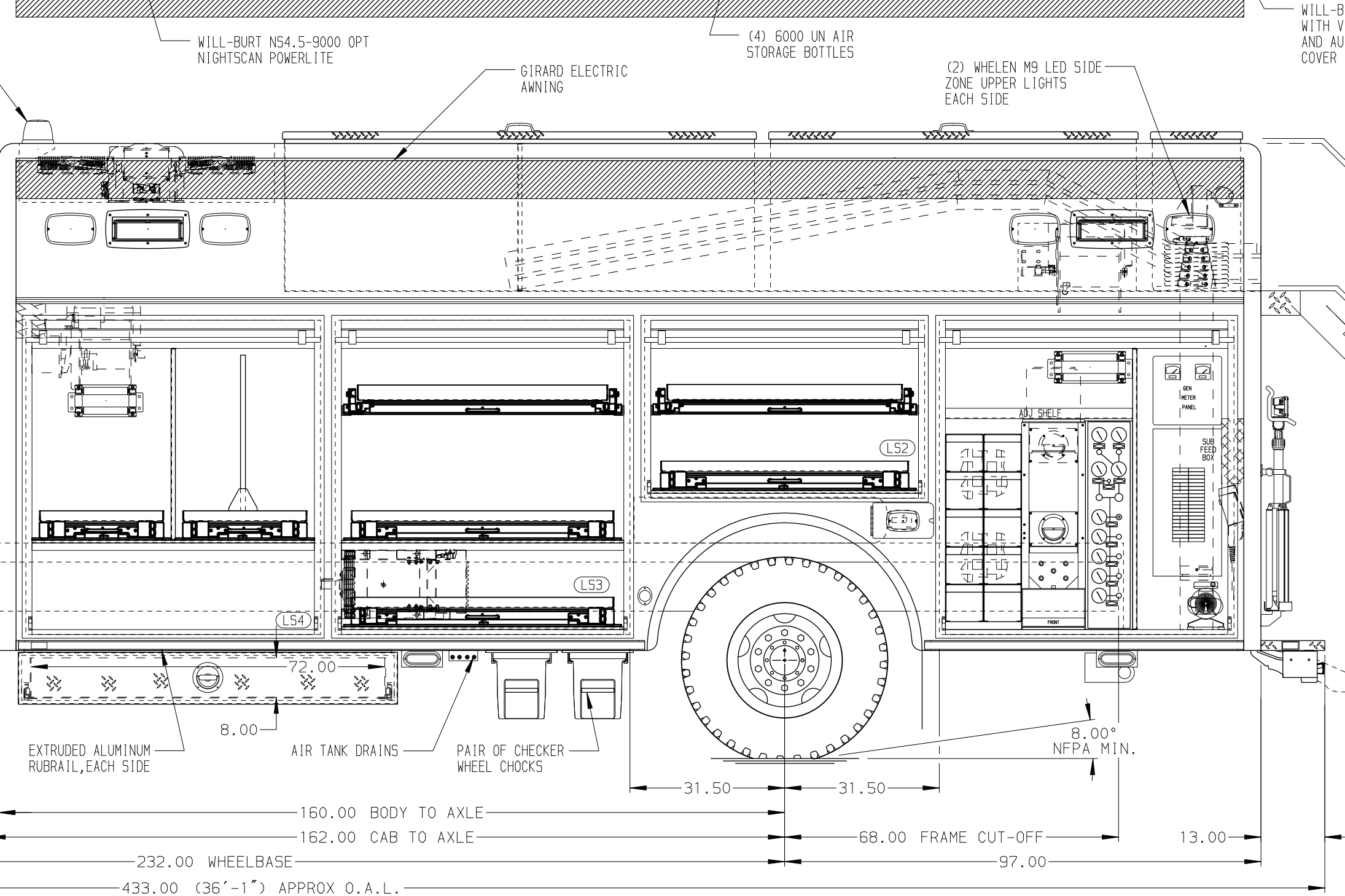
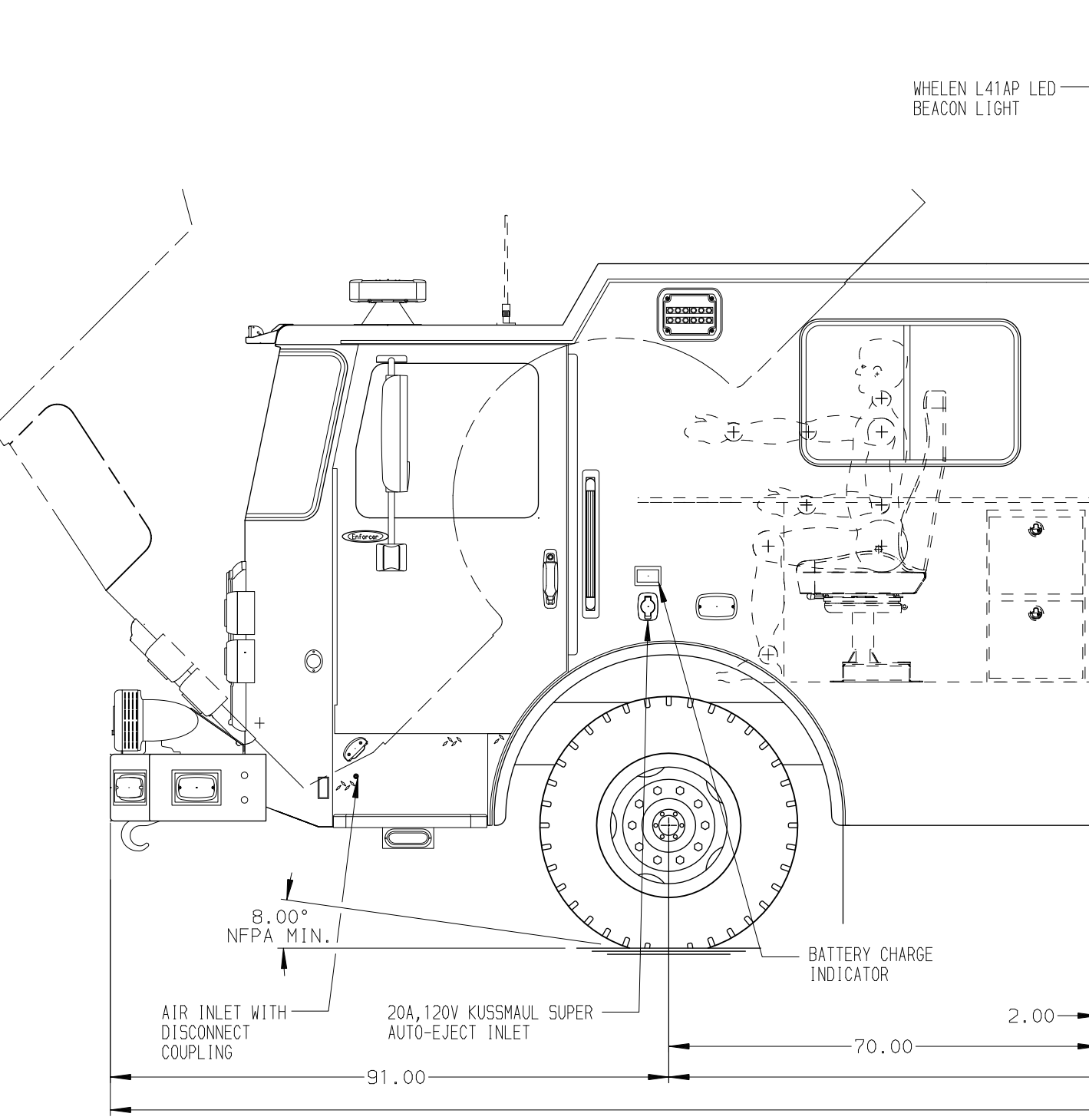
**COMPARTMENT L54 CONTAINS:**

- (1) KUSSMAUL 40/20 CHARGER
- BATTERY JUMPER STUDS MOUNTED ON BATTERY BOX
- (1) VERTICAL COMPARTMENT DIVIDER
- (1) HORIZONTAL FLOOR EXTENSION
- (1) ON-SCENE 2-WAY FLOOR MTD SLIDE OUT TRAY
- (1) ON-SCENE 2-WAY FLOOR MOUNTED SLIDE OUT TRAY WITH TOOLBOARD AND PAC TRAC EACH SIDE
- (1) ELECTRIC CORD REEL WITH 200' OF 10/4 YELLOW CORD
- PAC TRAC ON REAR WALL OF COMPARTMENT

**REAR COMPARTMENT CONTAINS THE FOLLOWING:**

**COMPARTMENT B1 CONTAINS:**

- (1) 60" DP ON-SCENE SLIDE OUT TRAY
- (1) ON-SCENE FLOOR MOUNTED SLIDE OUT TRAY



**NOTE**

DIMENSIONS SHOWN ARE APPROXIMATE AND ARE SUBJECT TO MINOR DEVIATIONS AS MAY OCCUR OR BE NECESSARY IN CONSTRUCTION. MINOR DETAILS NOT SHOWN.

- NOTES:**
- WARN #9,000 PORTABLE RECEIVER STYLE WINCH
  - POLISHED S/S SCUFFPLATES ON CAB AND CREW CAB DOOR JAMBS AND HANDRAILS
  - FLOOR IN CAB AND CREW CAB TO BE PADDED RUBBER
  - PULL STRAPS ON ALL BODY ROLL-UP DOORS
  - S/S GUARDS ON ALL BODY ROLL-UP DOORS
  - AMOR LED LIGHT STRIPS IN ALL BODY AND HATCH COMPARTMENTS
  - ONAN 35KW SINGLE PHASE PTO DRIVEN GENERATOR LOCATED BETWEEN THE FRAME RAILS
  - 20A, 120V 6-PLACE RECEPTACLE LOCATED ON ENGINE TUNNEL IN CAB
  - ALUMINUM TREADPLATE ON FRONT OF BODY

MAXIMUM O.A.H. 11'-2.5"  
 MAXIMUM O.A.L. 36'-1.0"

CLEAR DOOR WIDTH KEY		REV	DATE	BY	CH
AMOR ROLL UP DOORS:	-2 1/4"				
CURTAIN ROLL UP DOORS:	-2 1/2"	12JAN22	DHE	AZU	
PIERCE DOUBLE LIP DOORS:	-4 1/4"	04NOV21	DHE	THS	
PIERCE LIFT-UP LIP DOORS:	-3 1/2"	30AUG21	DHE	CDK	
(EX: 60" F-F - 2 1/4" = 57 3/4" CLEAR)					
(F-F) = FRAME TO FRAME					

		JOB NO.	36573
		SCALE	DATE
TITLE	HEAVY DUTY RESCUE NON-WALKIN	DRAWN BY	DHE 10AUG21
FOR	USMC CAMP BLAZ FIRE DEPARTMENT	CHECKED BY	AZU 11AUG21
	BID #902 SCOTT HANAMANN	SHEET SIZE	SHEET NO.
DWG NO.	36573AD	D	1 OF 1