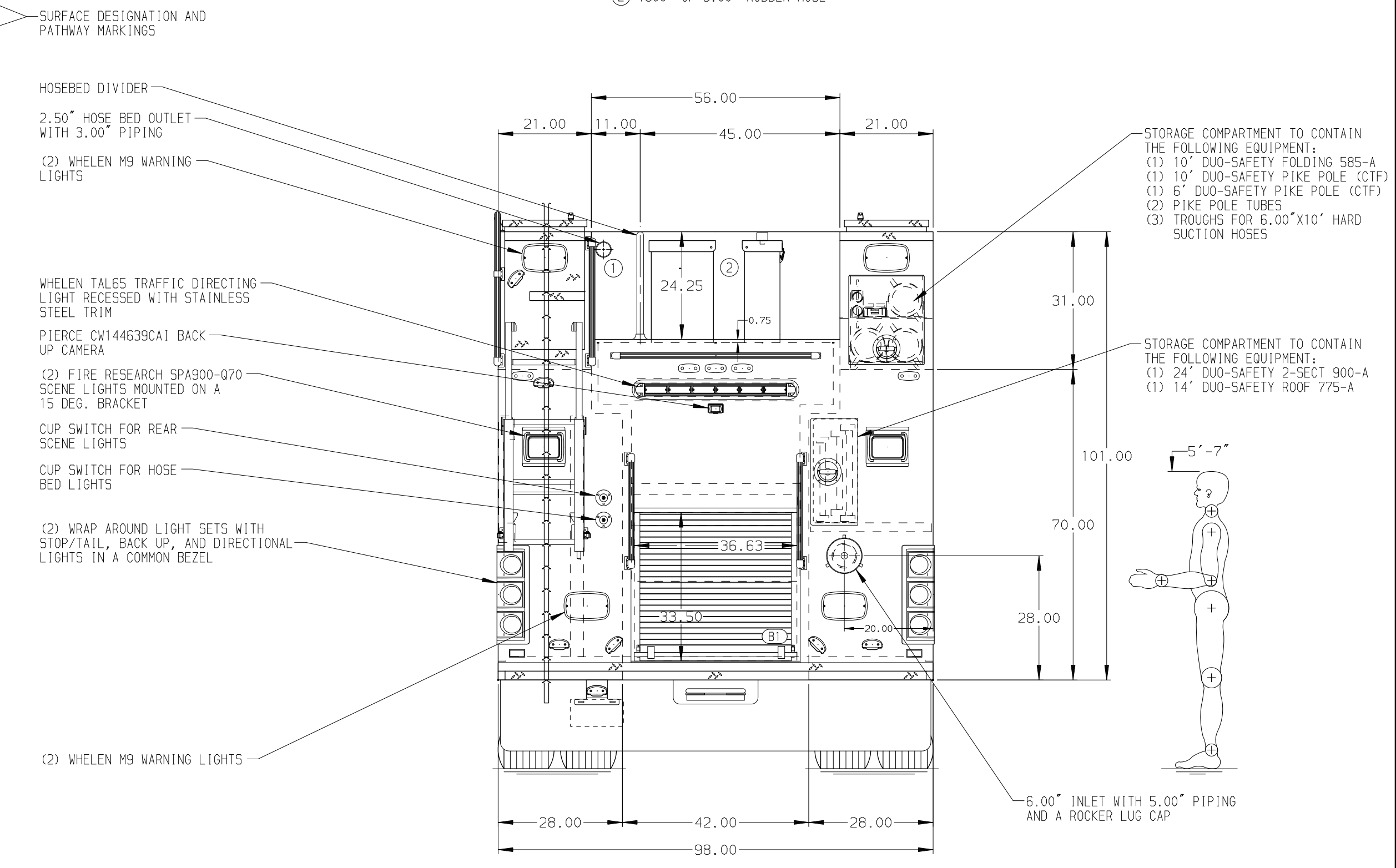


HOSEBED CAPACITIES

① 300' OF 2.50" D.J. POLY HOSE

② 1600' OF 5.00" RUBBER HOSE



ALUMINUM BODY

NOTE
 DIMENSIONS SHOWN ARE APPROXIMATE AND ARE SUBJECT TO MINOR DEVIATIONS AS MAY OCCUR OR BE NECESSARY IN CONSTRUCTION.
 MINOR DETAILS NOT SHOWN.

- TWO HANNAY ECR1618-17-18 3-WIRE ELECTRIC REWIND CORD REELS WITH 150' OF 12/3 CABLE AND REMOVABLE COVER LOCATED PER OPTION LIST
- TWO HANNAY E2016-17-18 HYDRAULIC REELS WITH A CAPACITY TO HOLD 100' OF 0.25" HOSE AND REMOVABLE COVER LOCATED PER OPTION LIST
- ONSPOT AUTOMATIC TIRE CHAINS TO BE PROVIDED AT REAR
- BATTERY CHARGER LOCATED PER OPTION LIST
- BATTERY CHARGER INDICATOR LOCATED PER OPTION LIST
- ONE ADJUSTABLE FULL WIDTH/DEPTH TILT/SLIDE-OUT TRAY PER OPTION LIST
- FIVE FLOOR MOUNTED SLIDE-OUT TRAYS WITH SIDES LOCATED PER OPTION LIST
- TWO SWING-OUT TOOLBOARDS WITH PEGBOARD PATTERN LOCATED PER OPTION LIST
- TWO ALUMINUM SLIDE-OUT TOOLBOARDS WITH PEGBOARD PATTERN LOCATED PER OPTION LIST
- THREE ZIAMATIC ULLH SCBA HOLDER BRACKETS LOCATED PER OPTION LIST
- NORCOLD NR251BB REFRIGERATOR LOCATED PER OPTION LIST
- CIRCUIT BREAKER PANEL LOCATED PER SHOP ORDER
- FOUR 120V DUPLEX RECEPTACLES IN CAB PER SHOP ORDER
- TWO RECEPTACLE BOXES WITH (4) RECEPTACLES LOCATED PER OPTION LIST
- TWO FULL WIDTH/DEPTH ADJUSTABLE SHELVES WITH SIDES LOCATED PER OPTION LIST
- ONE FULL WIDTH/DEPTH FIXED SHELF LOCATED PER OPTION LIST
- OIL DRY HOPPER WITH 100 LBS. OF OIL DRY ABSORBENT LOCATED PER OPTION LIST

CHASSIS DATA	TITLE	1500-D-1020P, 1000 GAL. WATER W/20 GAL. FOAM CELL
MAKE	FOR	VILLAGE OF OXFORD FIRE DEPARTMENT
PIERCE	MODEL	189" PUC RESCUE BODY, LADDERS THRU BODY, DELUGE
ENFORCER	DWG NO.	36606AD

Pierce MANUFACTURING INC.

JOB NO. 36606

SCALE 1:24 DATE

DRAWN BY BST 180CT21

CHECKED BY PHA 180CT21

SHEET SIZE D SHEET NO. 1 OF 1