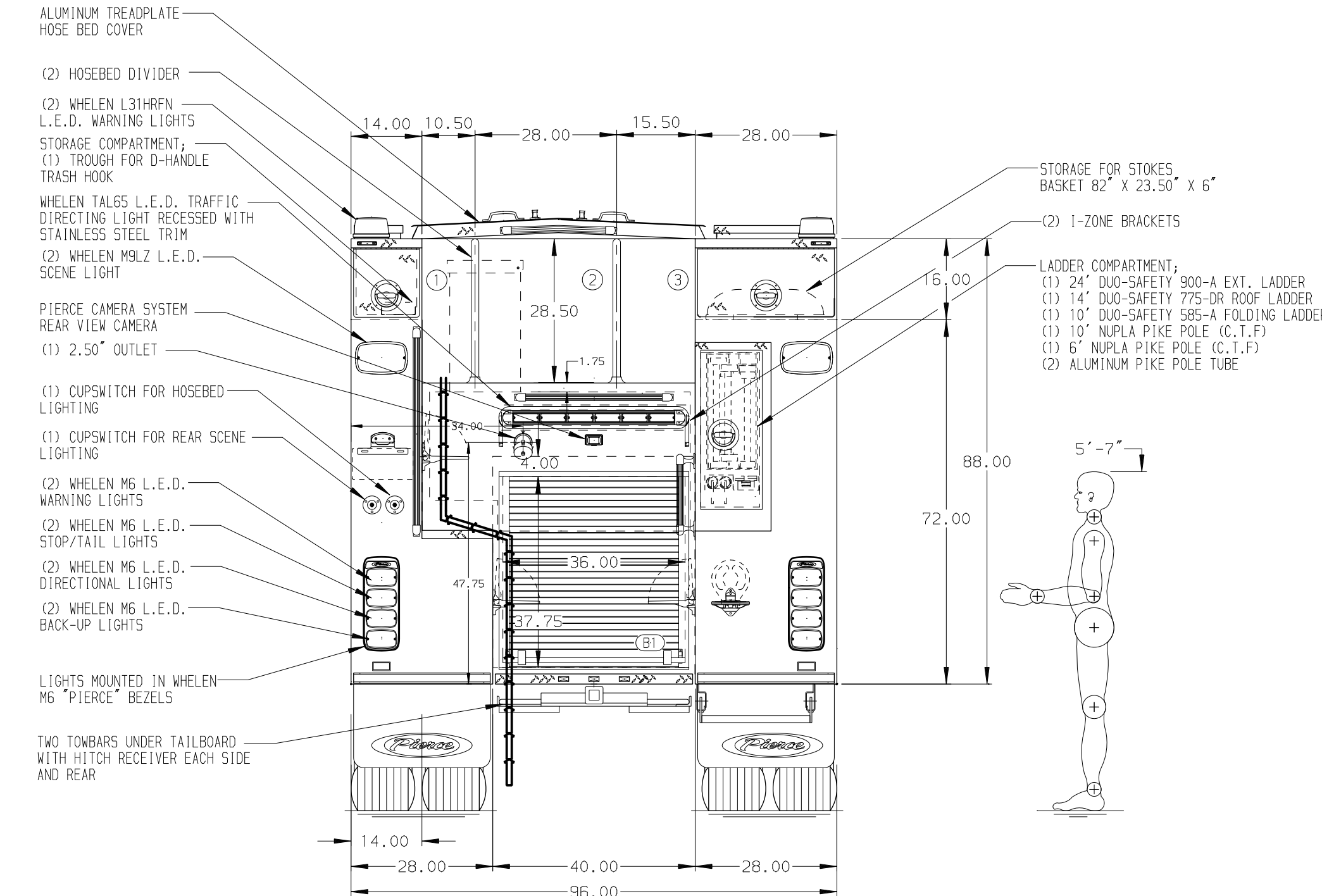
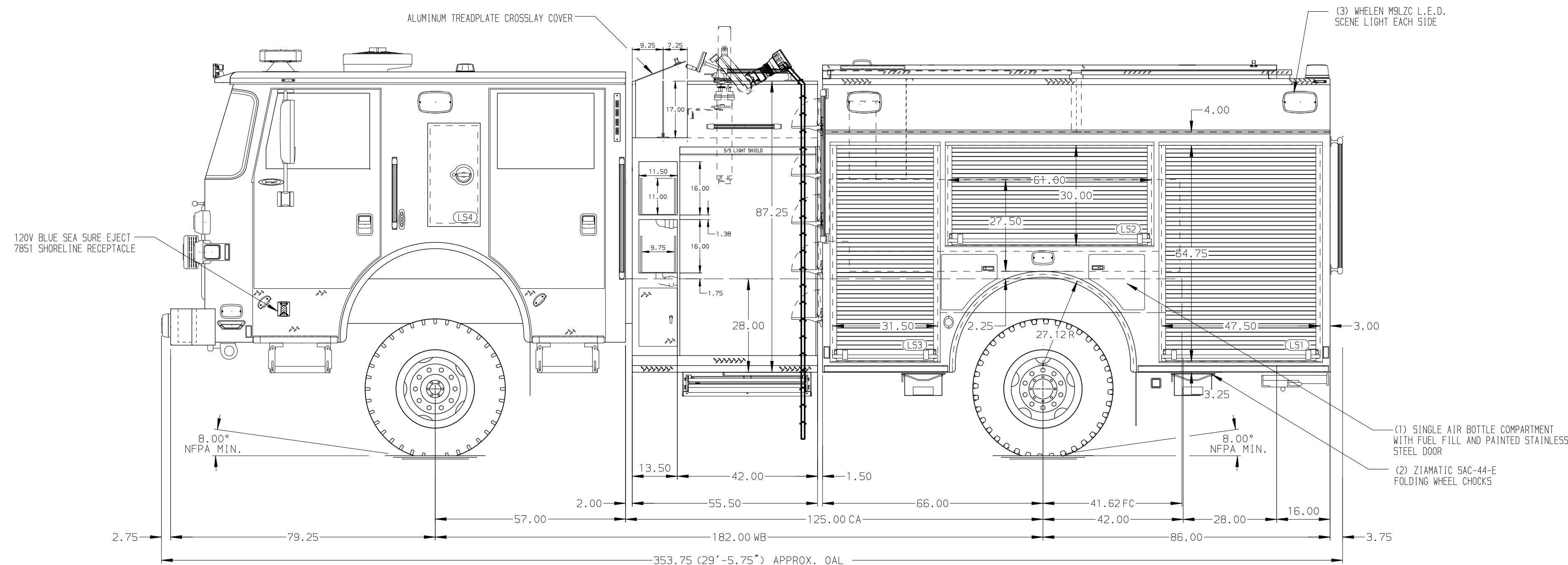


- HOSEBED CAPACITIES
- ① 500' OF 1.50" S.J. WILDLAND HOSE
 - ② 1000' OF 4.00" D.J. POLY HOSE
 - ③ 600' OF 2.50" D.J. POLY HOSE



ALUMINUM BODY MAXIMUM O.A.H. 126.00"

NOTE
 DIMENSIONS SHOWN ARE APPROXIMATE AND ARE SUBJECT TO MINOR DEVIATIONS AS MAY OCCUR OR BE NECESSARY IN CONSTRUCTION.
 MINOR DETAILS NOT SHOWN.

1. BATTERY CHARGER LOCATED IN COMPARTMENT AS PER ORDER
2. BATTERY CHARGE INDICATOR LOCATED NEAR DRIVER'S SEAT RISER WITH BRACKET
3. DUAL L.E.D. LIGHT STRIPS LOCATED IN HOSE BED
4. SEVEN DRIP PAN GUARDS FOR ROLL-UP DOOR LOCATED ON COMPARTMENTS AS PER ORDER
5. TEN FULL WIDTH/DEPTH ADJUSTABLE SHELVES LOCATED IN COMPARTMENTS AS PER ORDER
6. ONE FLOOR MOUNTED SLIDE-OUT TRAY IN COMPARTMENTS AS PER ORDER
7. HAND RAILING TO BE BLACK
8. AIR INLET WITH DISCONNECT TO BE LOCATED ON DRIVER SIDE PUMP PANEL
9. TWO CTECH (4) DRAWER ASSEMBLIES LOCATED IN COMPARTMENTS AS PER ORDER
10. TWO VERTICAL PARTITIONS IN COMPARTMENTS AS PER ORDER
11. FIVE PAC TRACS INSTALLED ON BACK WALLS ONLY IN COMPARTMENTS AS PER ORDER
12. ONE PAC TRAC INSTALLED ON WALL IN COMPARTMENTS AS PER ORDER
13. RUB RAILS TO BE BLACK
14. THREE AIR BOTTLE STORAGE BINS IN COMPARTMENTS AS PER ORDER
15. FOUR 4 PLACE 15/20A 120V 3PR/3WR RECEPTACLES LOCATED IN COMPARTMENTS PER ORDER

CHASSIS DATA				TITLE	1500-D-500P, 152" PUMPER BODY, LADDERS THRU RS BODY (2) SPEEDLAY, (1) XLAY, (1) DEADLAY, DELUGE
09DEC21	JRC	DTJ		FOR	BIG BEAR FIRE DEPARTMENT BIG BEAR LAKE, CALIFORNIA
11NOV21	JRC	WKL	MAKE		
11NOV21	JRC	DTJ	PIERCE		
26AUG21	JRC	WKL	MODEL	DWG	36611AD
REV	DATE	BY	CH	NO.	

Pierce MANUFACTURING INC.

JOB NO. 36611

SCALE 1:24 DATE

DRAWN BY JRC 17AUG21

CHECKED BY EGO 17AUG21

SHEET SIZE D SHEET NO. 1 OF 1