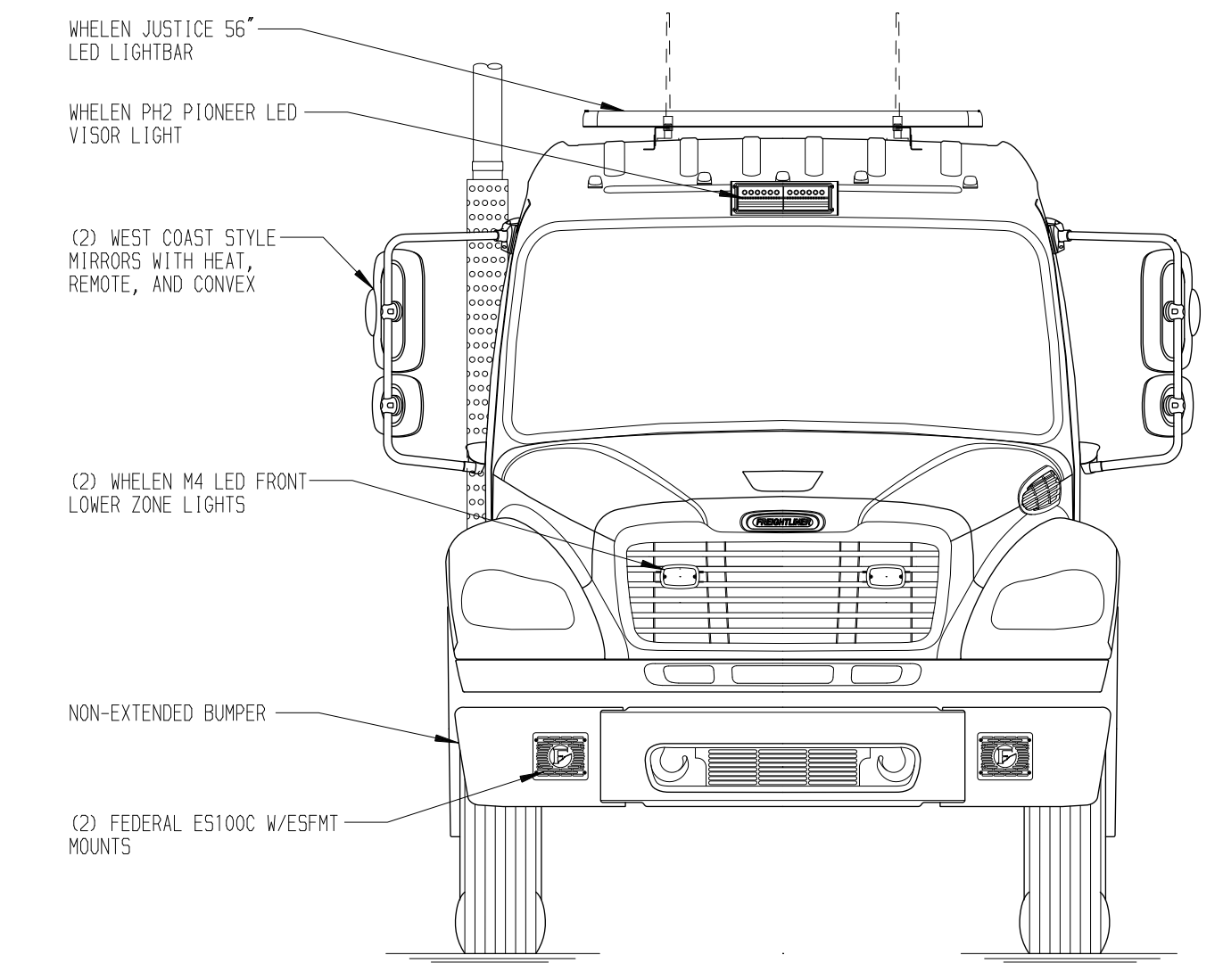
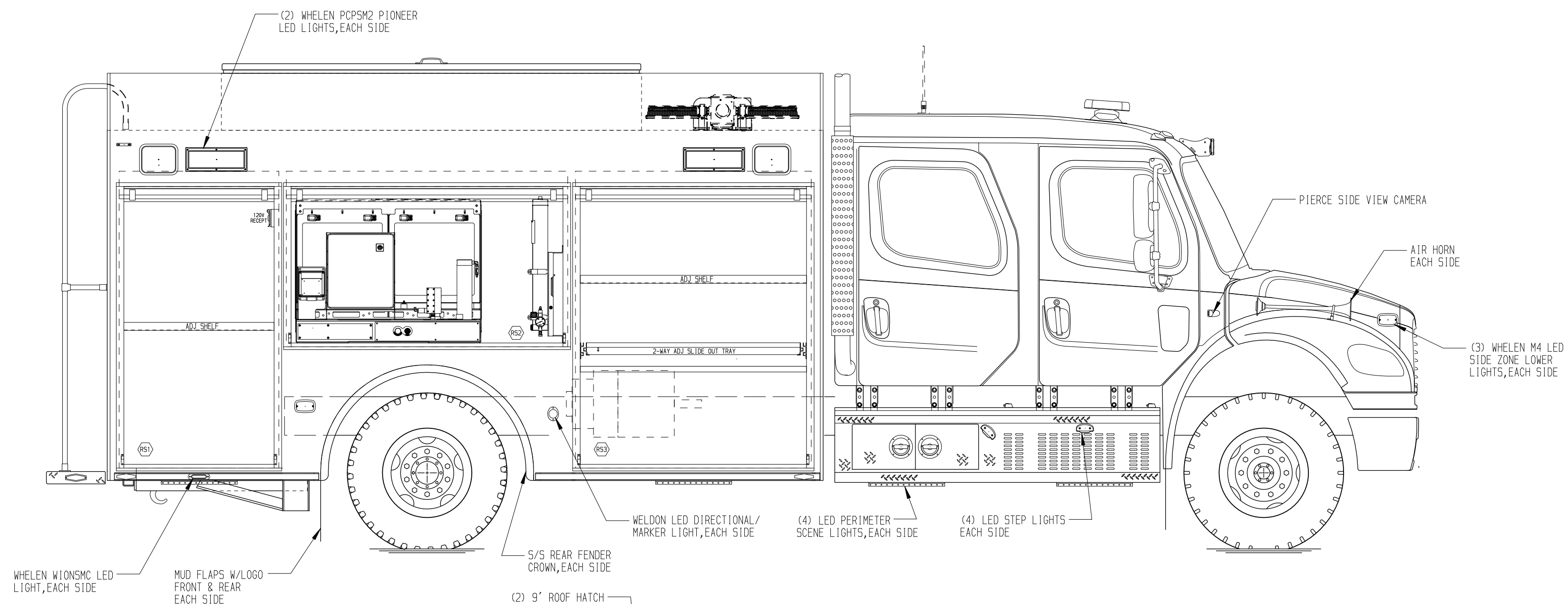


RIGHT SIDE COMPARTMENTS CONTAIN THE FOLLOWING:

COMPARTMENT RS1 CONTAINS:
 - (1) 22" DP ADJ SHELF
 - (1) 20A, 120V DUPLEX RECEPTACLE
 -

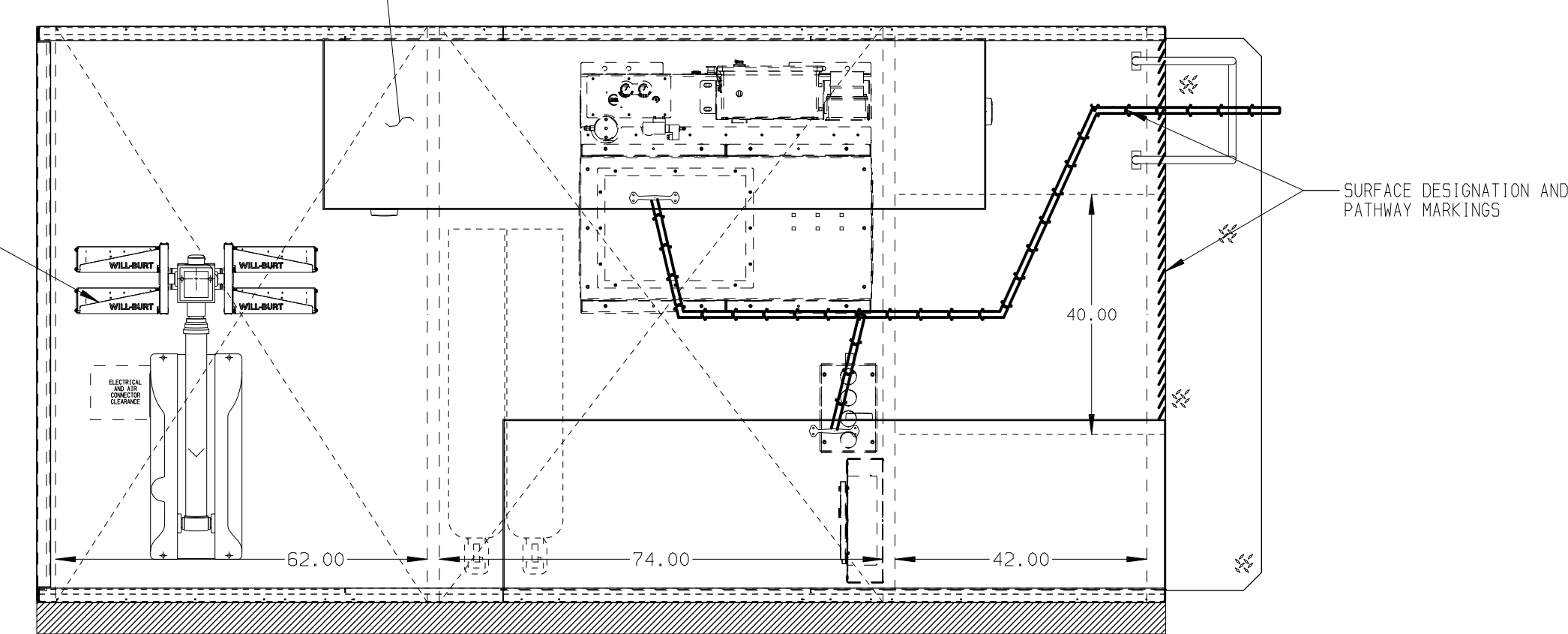
COMPARTMENT RS2 CONTAINS:
 - (1) 14 SCFM MAKO 10HP BREATHING AIR COMPRESSOR
 - BREATHING AIR PURIFIERS
 -

COMPARTMENT RS3 CONTAINS:
 - (1) 2-WAY ADJ SHELF
 - (1) 2-WAY ADJ SLIDE OUT TRAY
 - (1) HORIZONTAL FLOOR EXTENSION
 -



REAR COMPARTMENT CONTAINS THE FOLLOWING:

COMPARTMENT B1 CONTAINS:
 - (2) 40" DP ADJ SHELVES
 - (1) LOW PROFILE ELECTRIC CORD REEL WITH 200' OF 10/3 YELLOW CORD
 -
 -

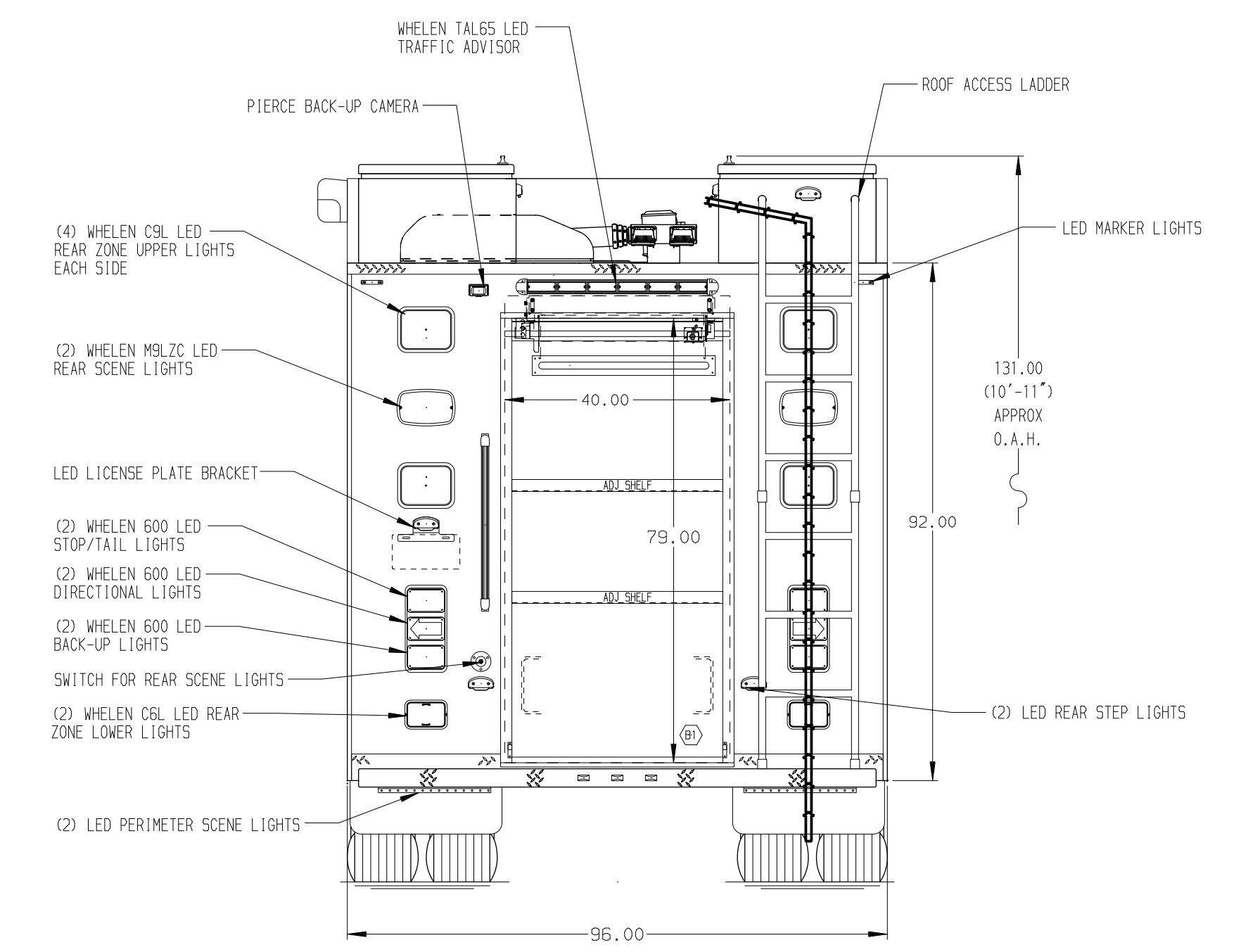
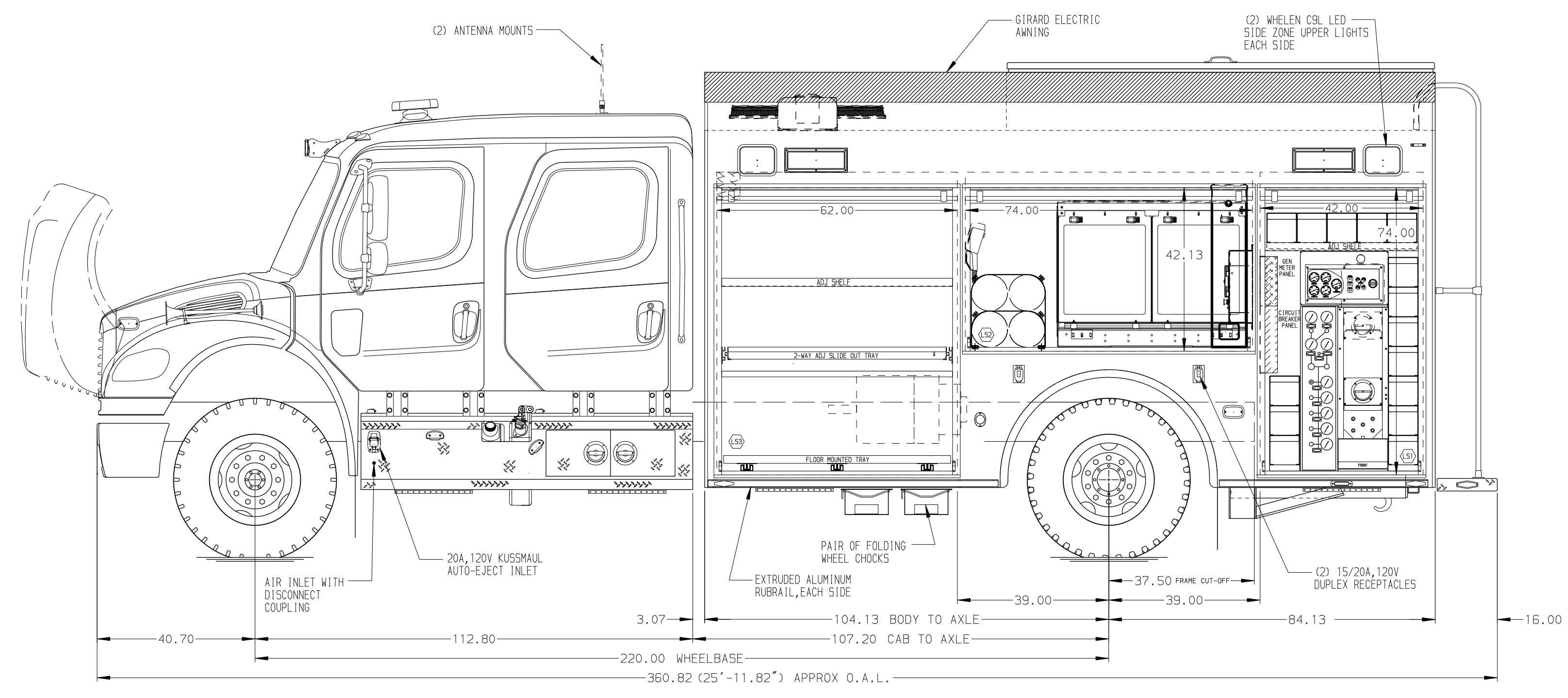


LEFT SIDE COMPARTMENTS CONTAIN THE FOLLOWING:

COMPARTMENT LS1 CONTAINS:
 - (1) RACK FOR 7 SCBA BOTTLES
 - (1) RACK FOR 5 SCBA BOTTLES
 - (1) RACK FOR 3 SCBA BOTTLES
 - (1) 22" DP ADJ SHELF
 - (1) CIRCUIT BREAKER PANEL
 - (1) GENERATOR METER PANEL
 - (1) CASCADE SYSTEM CONTROL PANEL
 - (1) "SPACESAVER" 2-BOTTLE FILL ENCLOSURE
 -

COMPARTMENT LS2 CONTAINS:
 - (4) 6000 UN AIR STORAGE BOTTLES
 - MAKO COMPRESSOR CONTROLLER
 - REMOTE DRAIN RESERVOIR
 - (1) NIGHTSCAN CONTROLLER
 -

COMPARTMENT LS3 CONTAINS:
 - (1) KUSSMAUL 1200 CHARGER
 - (1) 2-WAY ADJ SHELF
 - (1) 2-WAY ADJ SLIDE OUT TRAY
 - (1) FLOOR MOUNTED TRAY
 - (1) HORIZONTAL FLOOR EXTENSION
 -



NOTE
 DIMENSIONS SHOWN ARE APPROXIMATE AND ARE SUBJECT TO MINOR DEVIATIONS AS MAY OCCUR OR BE NECESSARY IN CONSTRUCTION. MINOR DETAILS NOT SHOWN.

NOTES:
 1. LIMA 40kW 3-PHASE PTO DRIVEN GENERATOR WITH SPLASH GUARD LOCATED BETWEEN THE FRAME RAILS
 2. PIERCE LED LIGHTS IN ALL BODY COMPARTMENTS

		JOB NO.	36639
		SCALE	DATE
Pierce MANUFACTURING INC.		TITLE	ENCORE RESCUE VEHICLE
		FOR	EAST MANATEE FIRE RESCUE DISTRICT
		DWG NO.	BID #702
		CHECKED BY	ERIC HUOVINEN
		SHEET NO.	1 OF 1
		36639AD	

REV	DATE	BY	CH	CHASSIS DATA
01NOV21	DHE	AZU		MAKE
27SEP21	DHE	CDK		FREIGHTLINER
28JUL21	DHE	CDK		MODEL
				M2-106