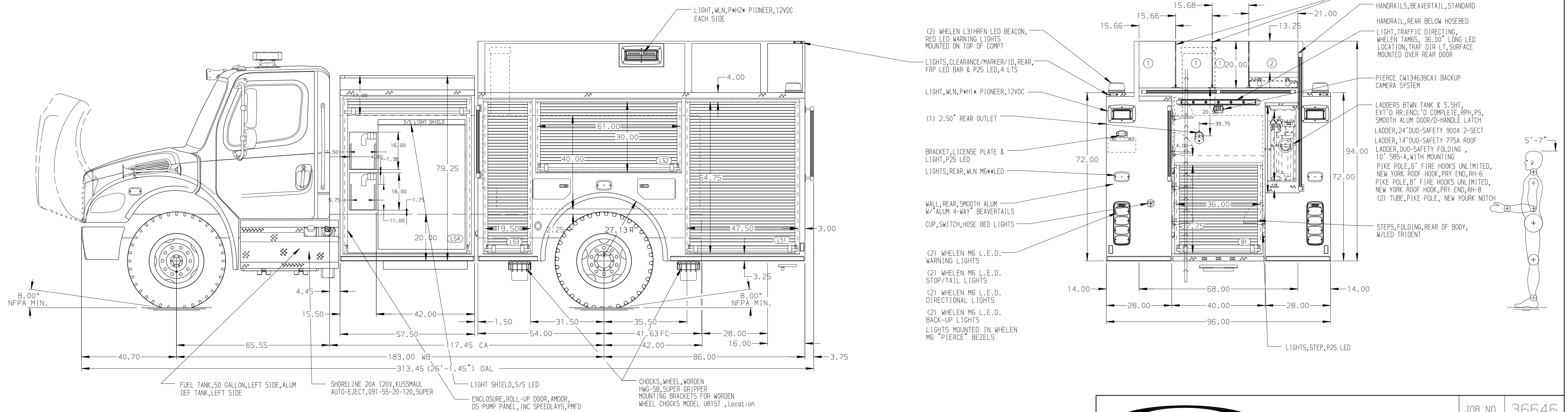


HOSEBED CAPACITIES

① 500' OF 5.00" D.I. POLY HOSE

② 500' OF 2.50" D.I. POLY HOSE



ALUMINUM BODY

NOTE  
DIMENSIONS SHOWN ARE APPROXIMATE AND ARE SUBJECT TO MINOR DEVIATIONS AS MAY OCCUR OR BE NECESSARY IN CONSTRUCTION. MINOR DETAILS NOT SHOWN.

						JOB NO.	36646
						SCALE	DATE
						1:24	
				TITLE 750-D-500P, 140" BDY, LS FULL HT & DEPTH, RS FULL HGT FDLER, 42" SIDE CONTROL, (2) 1.5" SPEEDLAYS		DRAWN BY	25AUG21
				FOR CITY OF WYOMING FIRE DEPARTMENT WYOMING, MI		CHECKED BY	26AUG21
				DWG NO. 36646AD		SHEET SIZE	SHEET NO.
						D	1 OF 1
REV	DATE	BY	CH	M2-106			
16NOV21		RHU	AJA	MAKE			
10SEP21		RHU	RW1	MODEL			