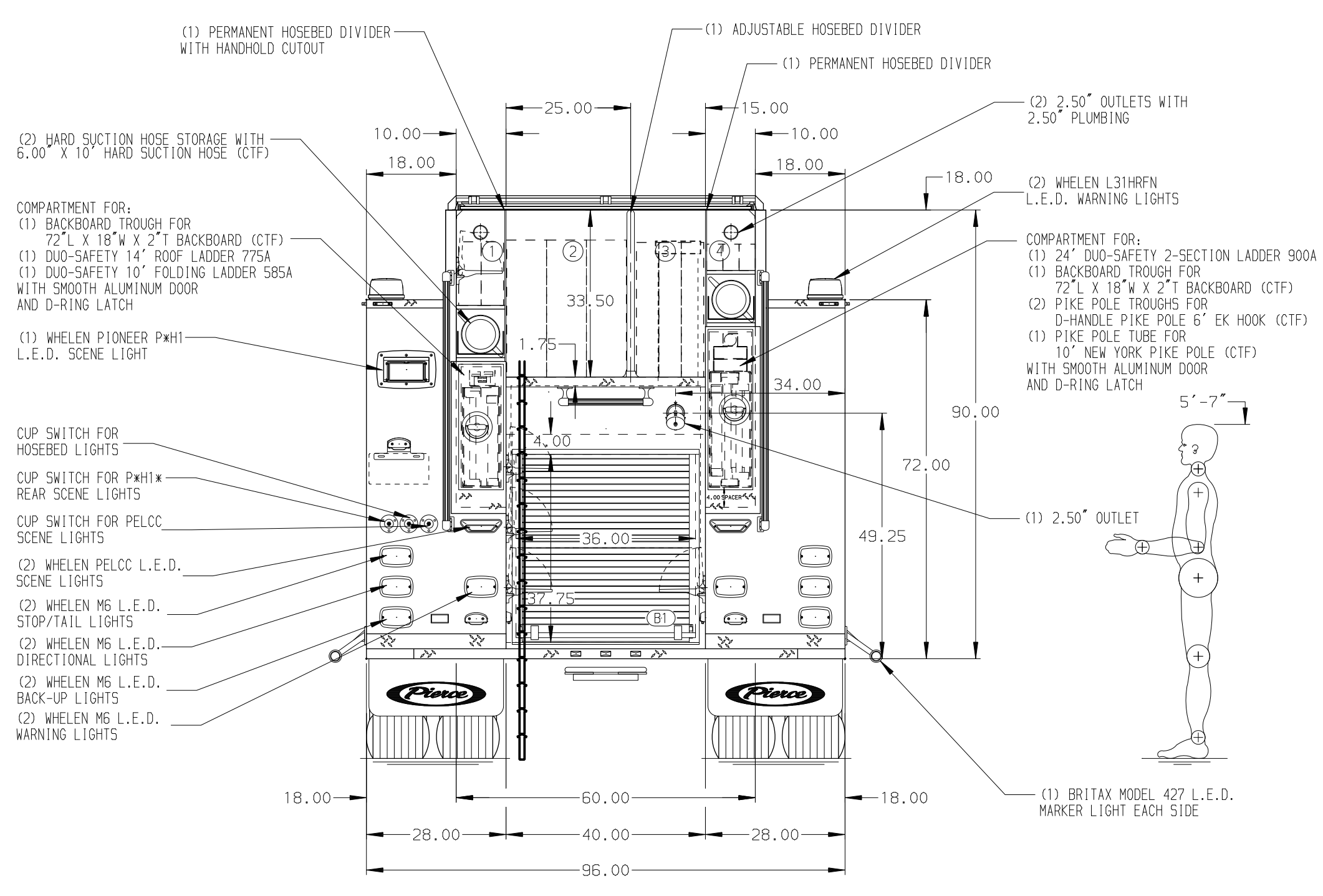


- HOSEBED CAPACITIES
- ① - 300' OF 2.50\"/>



**ALUMINUM BODY**

**NOTE**  
 DIMENSIONS SHOWN ARE APPROXIMATE AND ARE SUBJECT TO MINOR DEVIATIONS AS MAY OCCUR OR BE NECESSARY IN CONSTRUCTION. MINOR DETAILS NOT SHOWN.

1. WHEEL CHOCKS AND MOUNTING PROVIDED BY CUSTOMER
2. AIR INLET W/ DISCONNECT COUPLING LOCATED AT DRIVER'S SIDE PUMP PANEL
3. AIR OUTLET WITH SHUT OFF VALVE LOCATED AT DRIVER'S SIDE PUMP PANEL
4. VORTEL LUBE SYSTEM
5. DUAL L.E.D. LIGHT STRIPS LOCATED IN HOSE BED
6. DUAL L.E.D. LIGHT STRIPS LOCATED IN CARGO AREA
7. VANNER LIFESTAR INVERTER/BATTERY CHARGER BEHIND DRIVER'S SEAT

REV	DATE	BY	CH	ENFORCER
01DEC21	SAM	JJR		PIERCE
15OCT21	SAM	JJR		MODEL

TITLE	1750-D-500P, 500 GAL WATER TANK, 161\"/>
FOR	JACKSONVILLE FIRE AND RESCUE JACKSONVILLE, FLORIDA
DWG NO.	36669AD-SH1

JOB NO.	36669
SCALE	1:24
DATE	
DRAWN BY	SAM
CHECKED BY	JJR
SHEET SIZE	D
SHEET NO.	1 OF 2