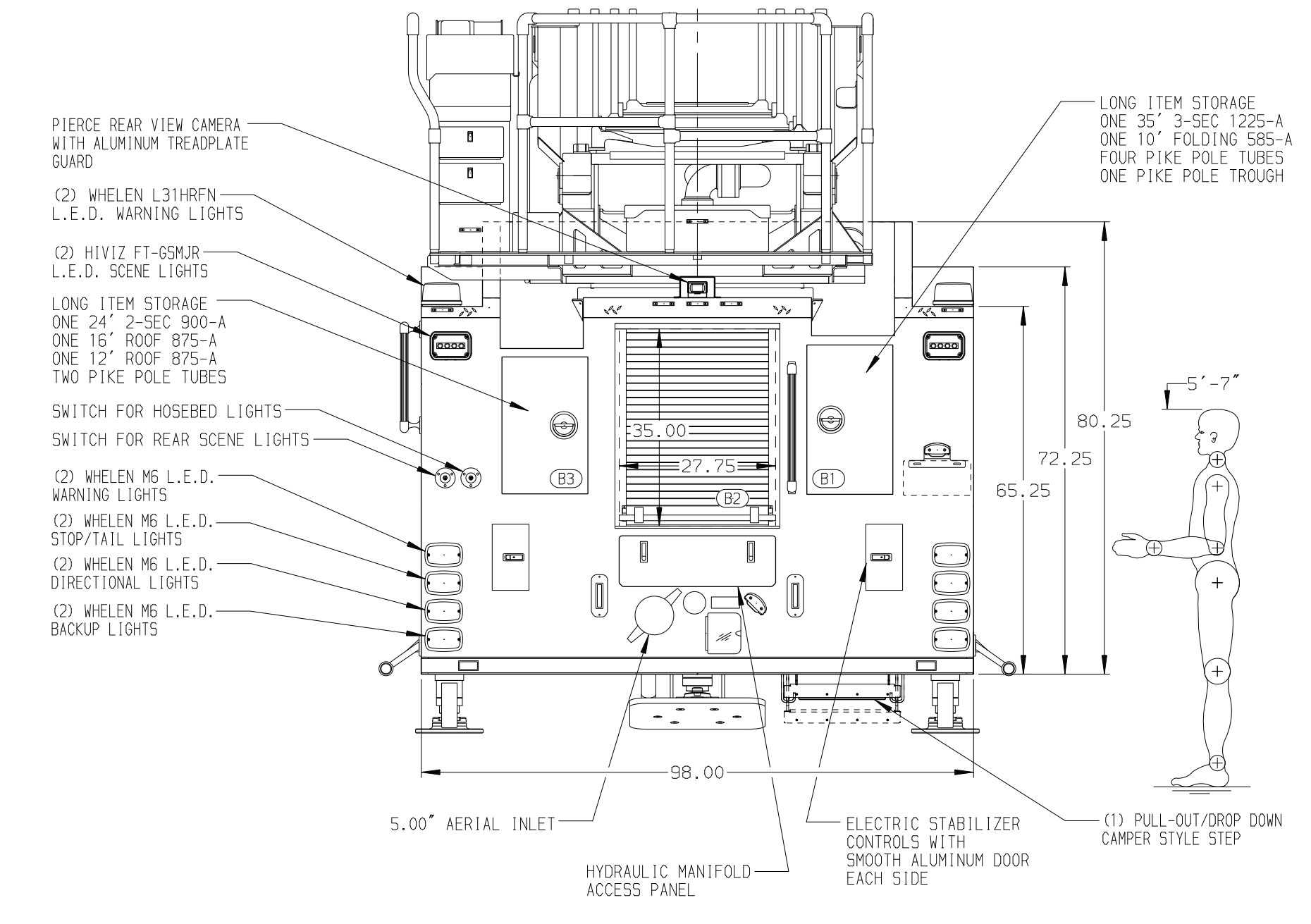
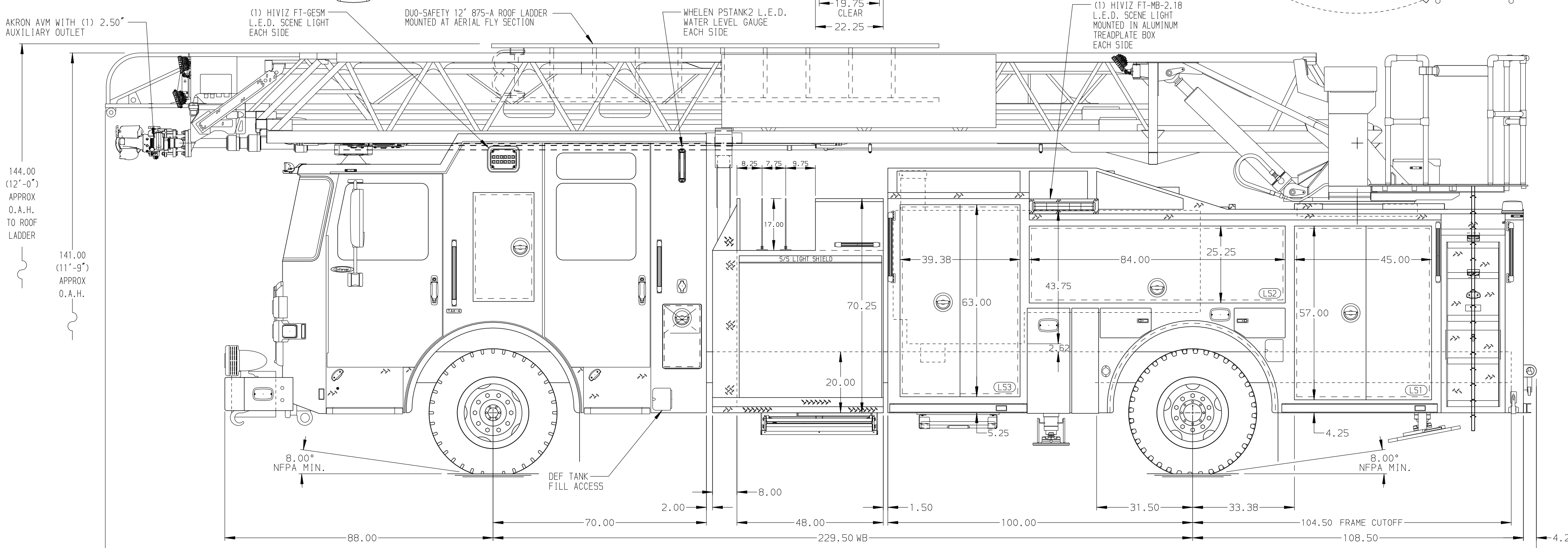


BODY	WATER TANK
107' ASL Aluminum Body	500 Gallon Poly Water Tank
COMPT, LEFT SIDE FRONT	Foam System
Full Height Lap Forward	Foam System Not Required
COMPT, LEFT SIDE REAR	Foam Cell
Full Height Lap Rearward	Foam Cell Not Required
COMPT, RIGHT SIDE FRONT	
Full Height Lap Forward	
COMPT, RIGHT SIDE REAR	
Full Height Lap Rearward	



CHASSIS	CAB	AXLE, FRONT, CUSTOM	TRANSMISSION	PUMPHOUSE	CROSSLAYS, 1.50"	SPEEDLAYS	SAFETY
Enforcer Chassis	7010 Notched Enforcer Cab	22,800 Lb TAK-4 Axle	Allison 5th Gen, 4500 EV5 P	48" Control Zone Side Mount	(2) 1.50", 200' of 1.75" D.J. Poly	Speedlays Not Required	Side Roll and
ENGINE	BUMPER	AXLE, REAR		PUMP	CROSSLAYS, 2.50"	GENERATOR	Frontal Impact Protection
510 HP Paccar MX13 Engine	19" Extended Painted Steel	33,500 Lb Meritor Axle		1500 GPM Waterous CSU	(1) 2.50", 200' of 2.50" D.J. Poly	Generator Not Required	

NOTE
DIMENSIONS SHOWN ARE APPROXIMATE AND ARE SUBJECT TO MINOR DEVIATIONS AS MAY OCCUR OR BE NECESSARY IN CONSTRUCTION. MINOR DETAILS NOT SHOWN.

- SHORELINE RECEPTACLE WITH KUSSMAUL SUPER AUTO-EJECT LOCATED ON DRIVER SIDE OF THE CREW CAB
- AIR INLET WITH DISCONNECT COUPLING IN THE DRIVER SIDE STEPWELL
- BATTERY CHARGER LOCATED IN COMPARTMENT PER SHOP ORDER
- BATTERY CHARGE INDICATOR LOCATED ON THE DRIVER SIDE SEAT RISER
- PACCAR DEF TANK MOUNTED UNDER CAB ON THE DRIVER'S SIDE
- L.E.D. LIGHT STRIPS LOCATED IN THE HOSE BED PER SHOP ORDER
- FIVE ADJUSTABLE FULL WIDTH/FULL DEPTH SHELVES IN COMPARTMENTS PER SHOP ORDER
- THREE FLOOR MOUNTED SLIDE-OUT TRAYS IN COMPARTMENTS PER SHOP ORDER
- ONE SWING-OUT ALUMINUM TOOL BOARD IN COMPARTMENT PER SHOP ORDER
- ONE CTECH 3-DRAWER ASSEMBLY IN COMPARTMENT PER SHOP ORDER
- ONE VERTICAL PARTITION IN COMPARTMENT PER SHOP ORDER
- ALUMINUM PEGBOARD ON BACK WALL OF FOUR COMPARTMENTS PER SHOP ORDER
- ONE 120V DUPLEX RECEPTACLE LOCATED IN CAB PER SHOP ORDER
- TWO 120V DUPLEX RECEPTACLES LOCATED IN COMPARTMENTS PER SHOP ORDER
- NON-RAISED AERIAL PEDESTAL
- DC POWER TO AERIAL TIP
- LIFTING EYE ROPE RESCUE ATTACHMENT AT AERIAL TIP
- 1500 GPM HIGH FLOW WATERWAY
- AIR HORN CONTROLS AT AERIAL TURNTABLE
- LIMITED RETRACTION NOT REQUIRED

Pierce MANUFACTURING INC.		JOB NO.	36712
		SCALE	1:24
		DATE	12AUG21
TITLE	107' ASCENDANT AERIAL LADDER AND BODY ASSEMBLY	DRAWN BY	TKA
FOR	EVERMAN FIRE DEPARTMENT EVERMAN, TEXAS	CHECKED BY	NDA
DWG NO.	36712AD	SHEET SIZE	D
		SHEET NO.	1 OF 1