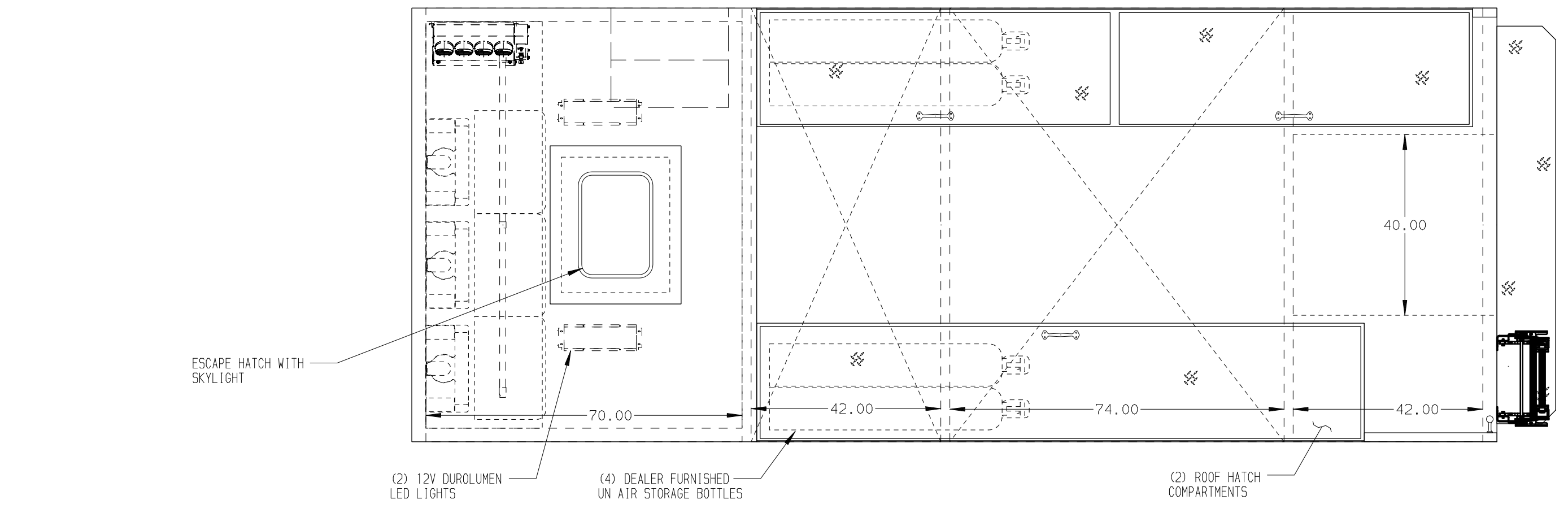
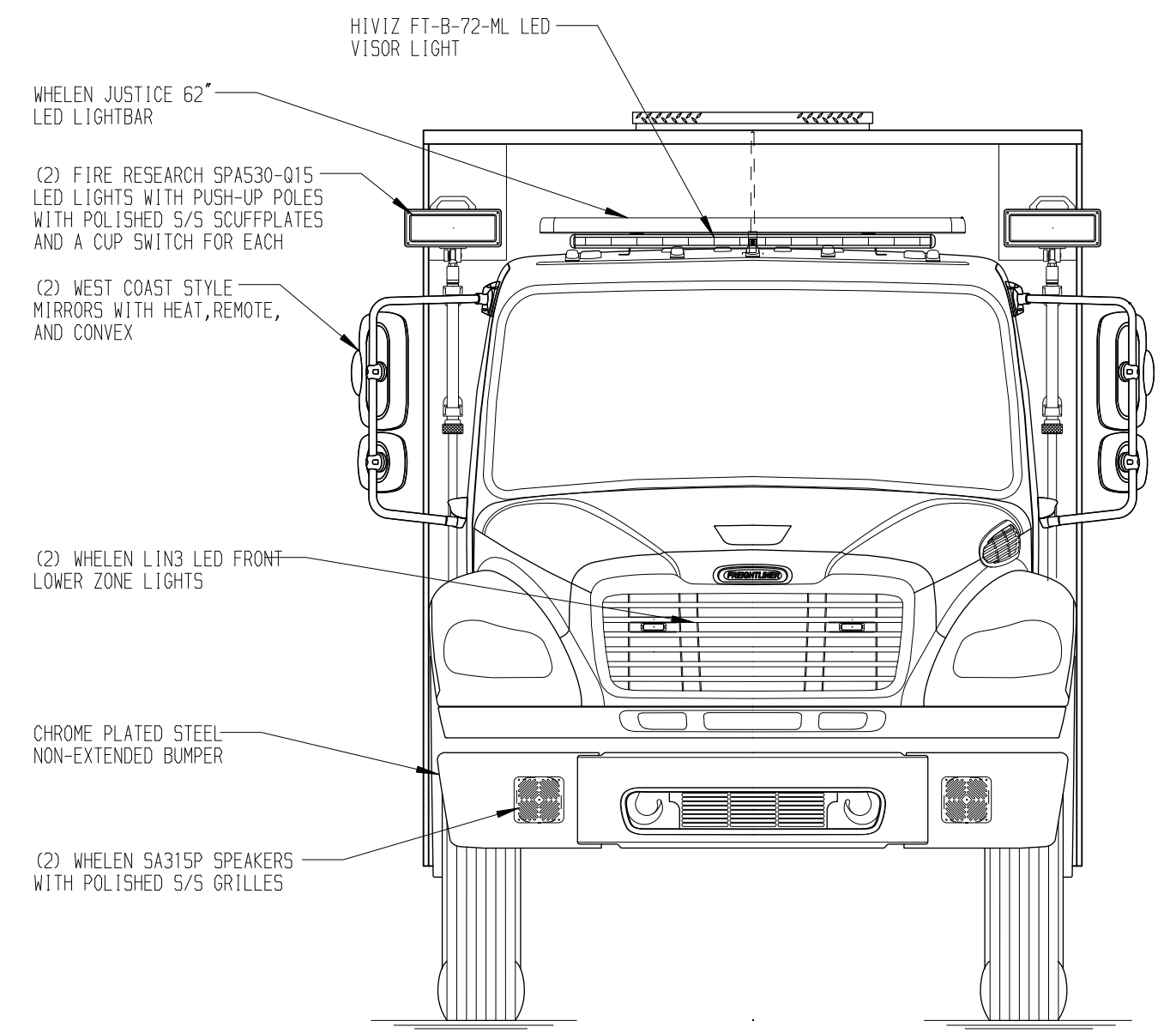
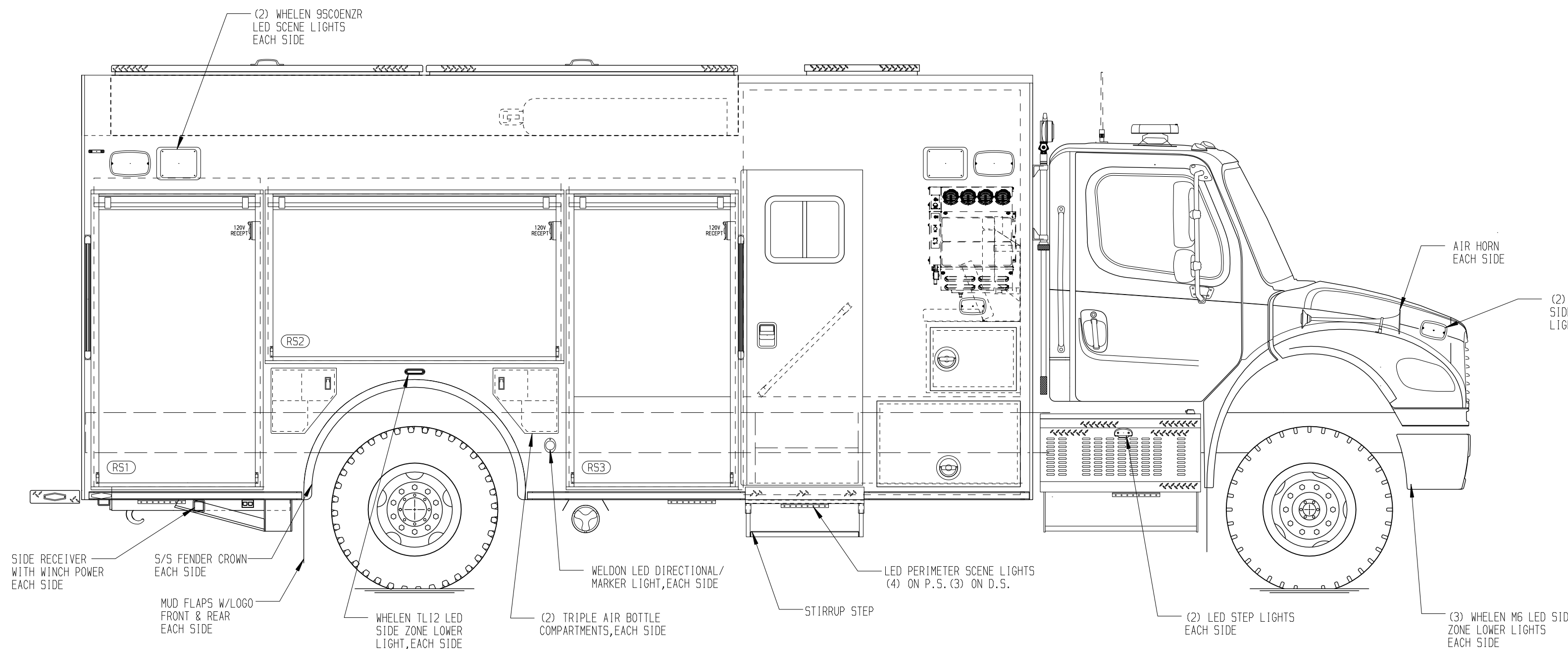


**RIGHT SIDE COMPARTMENTS CONTAIN THE FOLLOWING:**

COMPARTMENT RS1 CONTAINS:  
 - (1) 15/20A, 120V DUPLEX RECEPTACLE

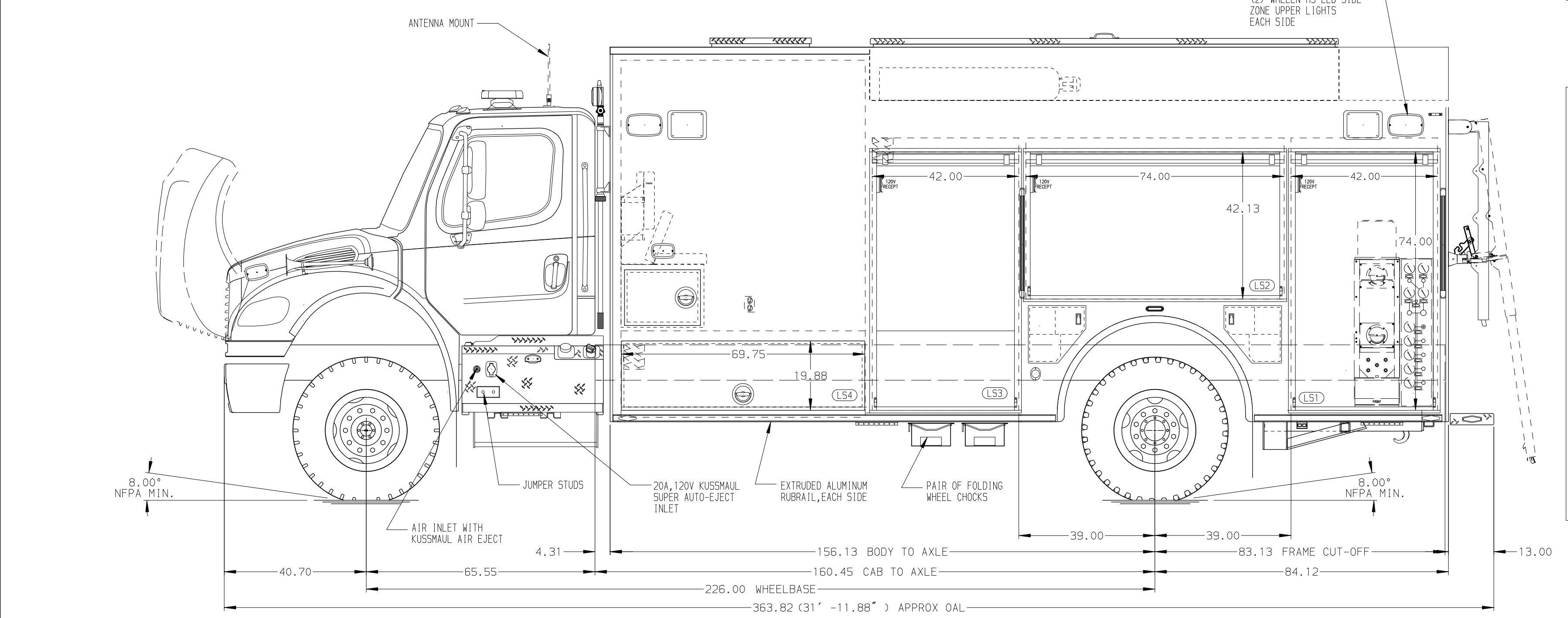
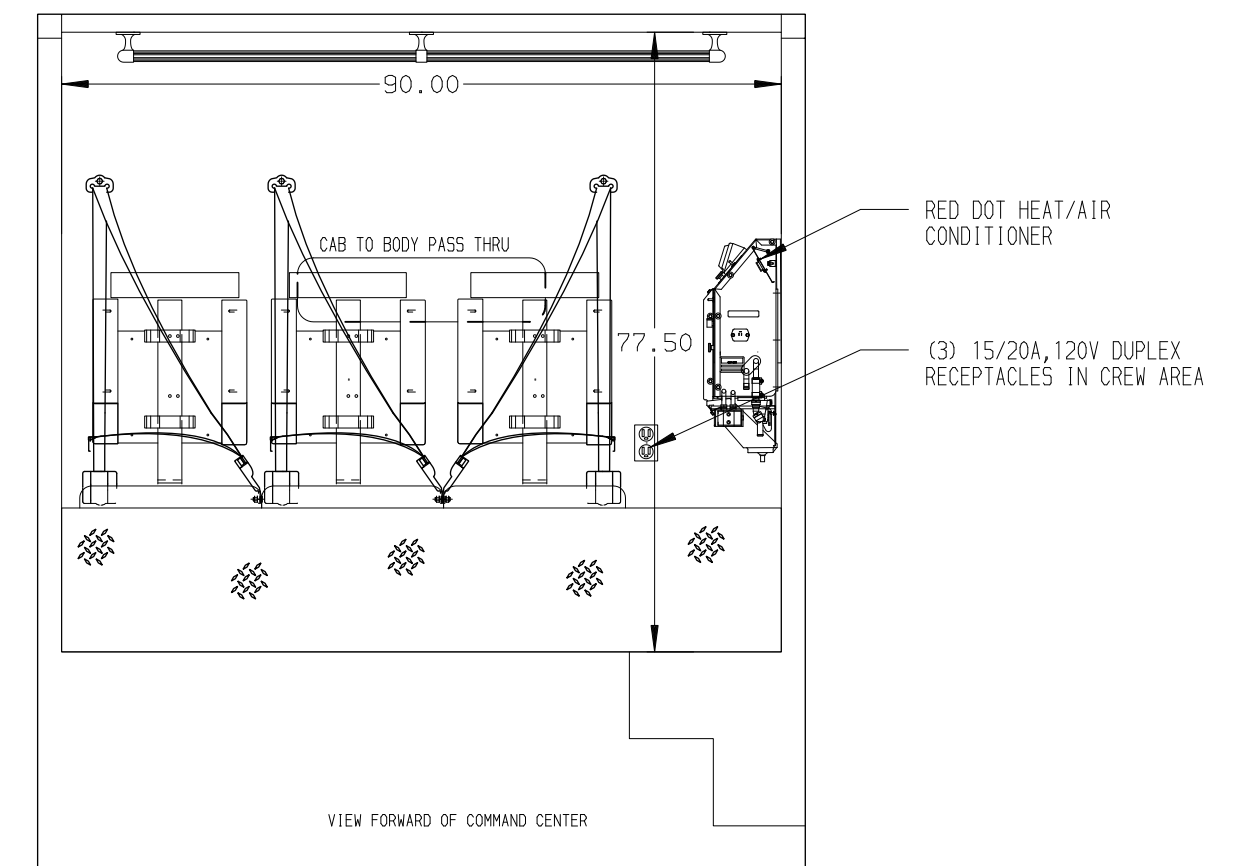
COMPARTMENT RS2 CONTAINS:  
 - (1) 15/20A, 120V DUPLEX RECEPTACLE

COMPARTMENT RS3 CONTAINS:  
 - (1) 15/20A, 120V DUPLEX RECEPTACLE



**REAR COMPARTMENT CONTAINS THE FOLLOWING:**

COMPARTMENT B1 CONTAINS:



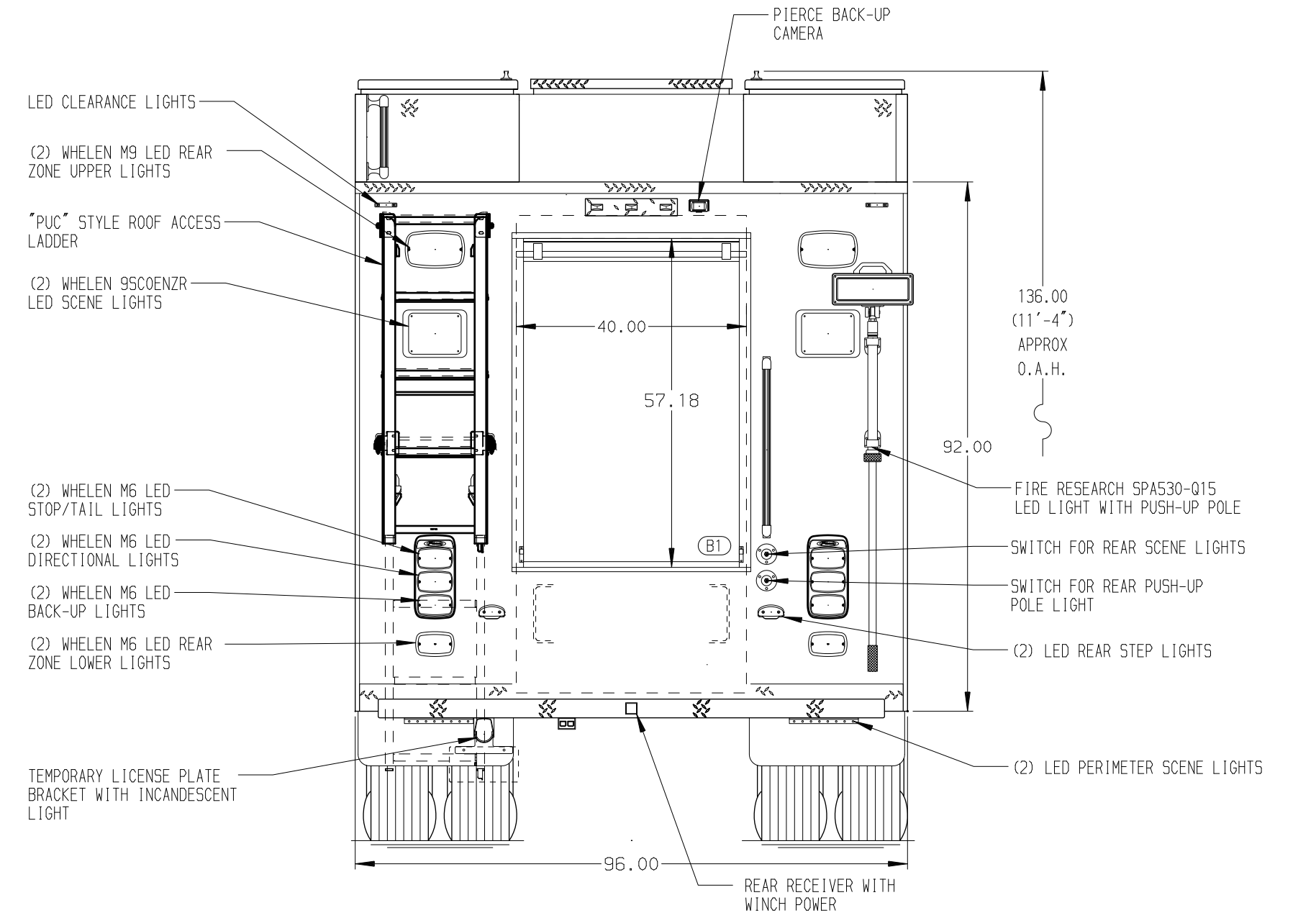
**LEFT SIDE COMPARTMENTS CONTAIN THE FOLLOWING:**

COMPARTMENT LS1 CONTAINS:  
 - (1) 15/20A, 120V DUPLEX RECEPTACLE  
 - DEALER FURNISHED "SPACE SAVER" FILL ENCLOSURE AND CONTROL PANEL

COMPARTMENT LS2 CONTAINS:  
 - (1) 15/20A, 120V DUPLEX RECEPTACLE

COMPARTMENT LS3 CONTAINS:  
 - (1) XANTREX XPOWER INVERTER  
 - (1) 15/20A, 120V DUPLEX RECEPTACLE

COMPARTMENT LS4 CONTAINS:  
 - (1) IOTA 45 AMP CHARGER



**NOTE**  
 DIMENSIONS SHOWN ARE APPROXIMATE AND ARE SUBJECT TO MINOR DEVIATIONS AS MAY OCCUR OR BE NECESSARY IN CONSTRUCTION. MINOR DETAILS NOT SHOWN.

**NOTES:**  
 1. BATTERY CHARGE INDICATOR LOCATED ON THE DRIVER'S SEAT RISER  
 2. PULL STRAPS ON ALL BODY ROLL-UP DOORS  
 3. POLISHED S/S SCUFFPLATE ON BODY ENTRANCE DOOR JAMB

MAXIMUM O.A.H.: 11'-6"  
 MAXIMUM O.A.L.: 31'-0"

CLEAR DOOR WIDTH KEY		REV	DATE	BY	CH	CHASSIS DATA
AMOR ROLL UP DOORS:	-2 1/4"	14JAN22	DHE	CDK		MAKE
CORTITE ROLL UP DOORS:	-2 1/2"	11JAN22	DHE	CDK		FREIGHTLINER
PIERCE DOUBLE LAP DOORS:	-4 1/4"	14OCT21	DHE	CDK		MODEL
PIERCE LIFT-UP LAP DOORS:	-1 1/2"	18AUG21	DHE	CDK		M2-106
(EX: 60" F-F - 2 1/4" = 57 3/4" CLEAR)						
(F-F) = FRAME TO FRAME						

		JOB NO.	36742
		SCALE	DATE
TITLE	ENCORE RESCUE VEHICLE	DRAWN BY	DHE
FOR	WELCOME FIRE DEPARTMENT	CHECKED BY	CDK
	BID #1025		06AUG21
		SOLAND, THOMAS	
DWG NO.	36742AD	SHEET SIZE	D
		SHEET NO.	1 OF 1