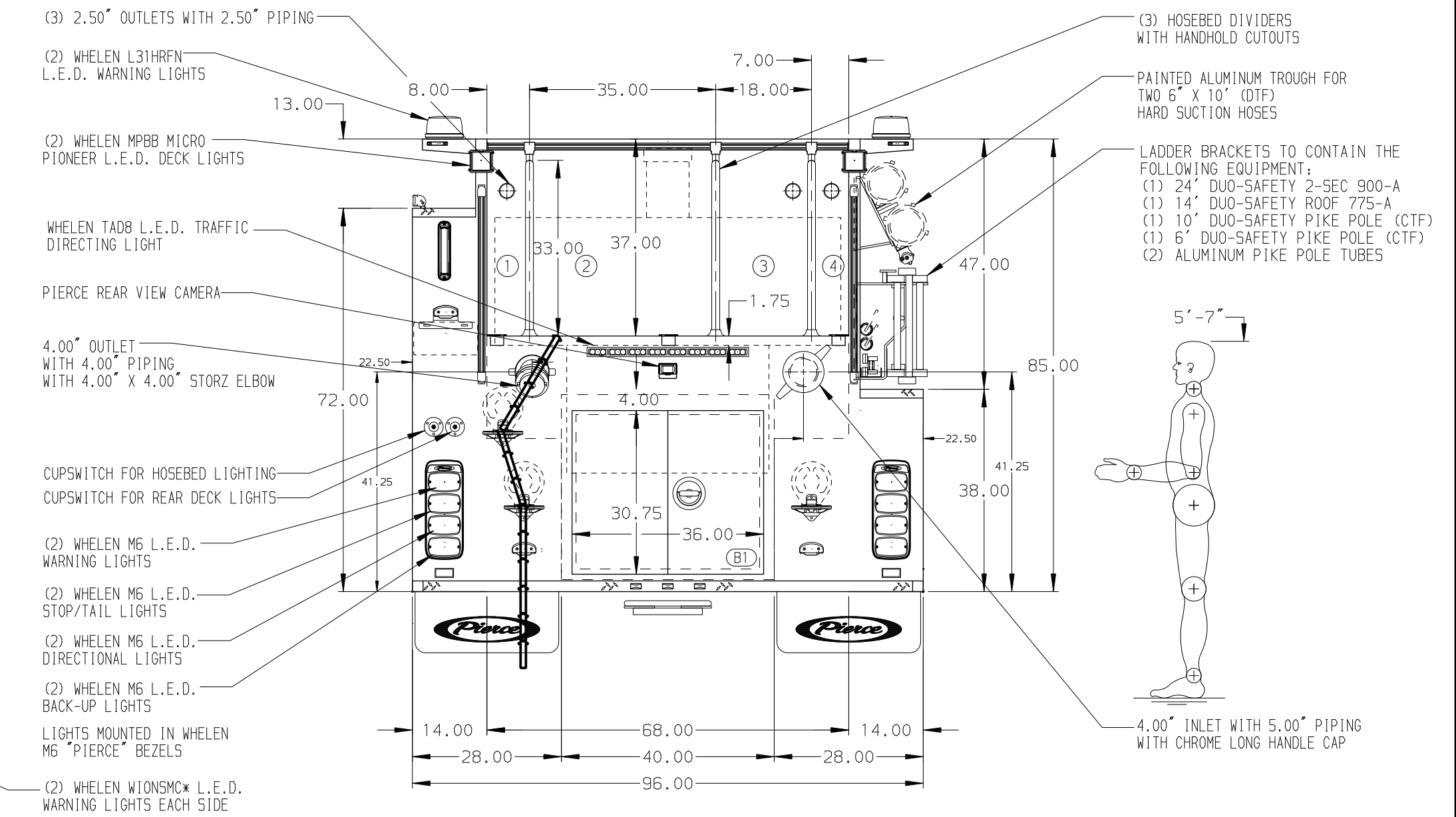
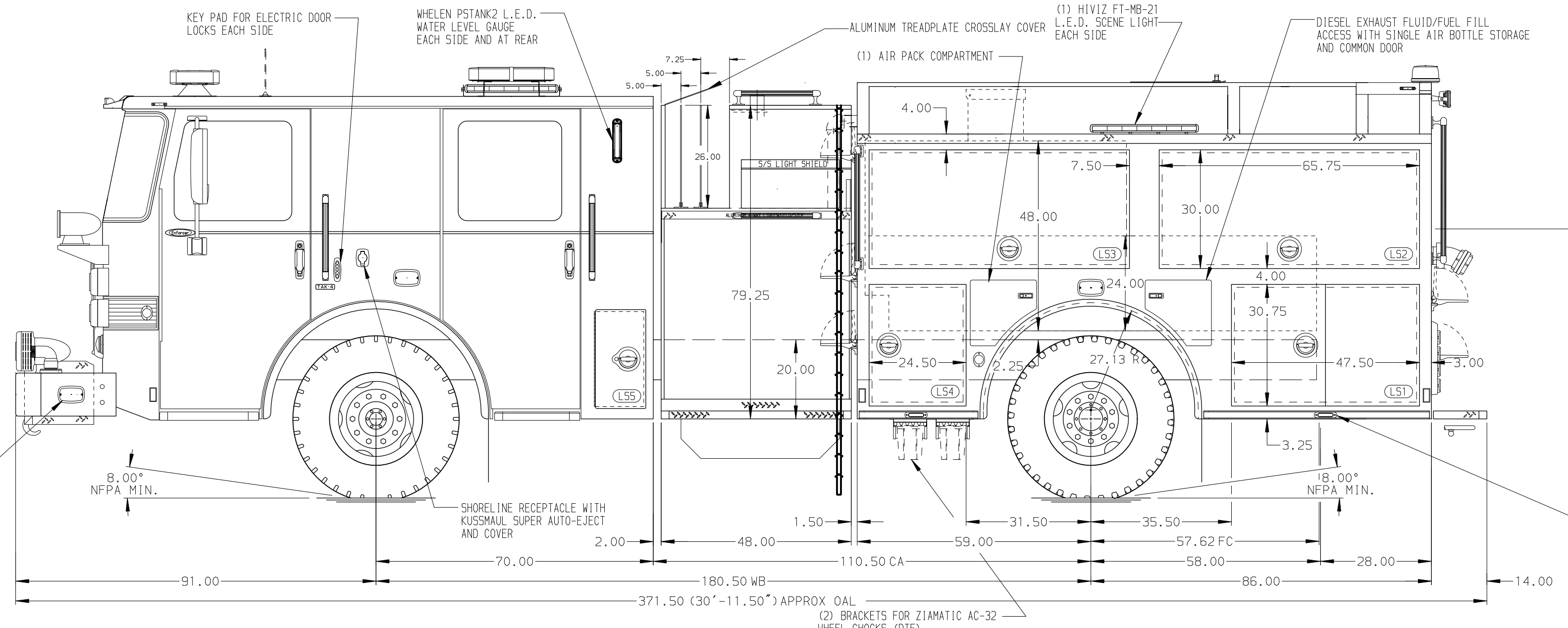


- HOSEBED CAPACITIES**
- ① - 400' OF 1.75" D.J. POLY HOSE
  - ② - 1200' OF 4.00" D.J. POLY HOSE
  - ③ - 800' OF 3.00" D.J. POLY HOSE
  - ④ - 250' OF 2.50" D.J. POLY HOSE



ALUMINUM BODY

SIDE ROLL AND FRONTAL IMPACT PROTECTION

**CUSTOMER APPROVAL**  
 APPROVED BY: \_\_\_\_\_  
 DATE: \_\_\_\_\_



JOB NO.	36803
SCALE	1:24
DATE	
DRAWN BY	LST
CHECKED BY	CDU
SHEET SIZE	D
SHEET NO.	1 OF 1

- NOTE**
1. ONSPOY TIRE CHAINS TO BE PROVIDED AT THE REAR.
  2. AIR INLET WITH DISCONNECT COUPLING ON D.S. STEP WELL.
  3. BATTERY CHARGER/COMPRESSOR LOCATED IN L33.
  4. DUAL L.E.D. LIGHT STRIPS LOCATED IN HOSE BED.
  5. ONE DRIP PAN GUARD FOR ROLL-UP DOOR LOCATED PER SHOP ORDER.
  6. REVERSED HINGED DOOR ON L54.
  7. THREE FULL WIDTH/DEPTH ADJUSTABLE SHELVES LOCATED PER SHOP ORDER.
  8. ONE FLOOR MOUNTED SLIDE-OUT TRAY LOCATED PER SHOP ORDER.
  9. PARTITION BETWEEN COMPARTMENTS L51/B1 AND R51/B1.
  10. ONE ALUMINUM PEGBOARD LOCATED PER SHOP ORDER ON BACK WALL.
  11. ONE 6-PLACE RECEPTACLE STRIP IN THE LEFT SIDE EMS CABINET.

CHASSIS DATA	TITLE	2000-D-750P, 750G WATER TANK, 145" FDLER BODY LADDERS ON SIDE SHEET, (2)XLYAS, (1) DEADLAY, DELUGE
MAKE	FOR	CATLETT VOLUNTEER FIRE RESCUE CATLETT, VIRGINIA
PIERCE		
MODEL	DWG NO.	36803AD
ENFORCER		