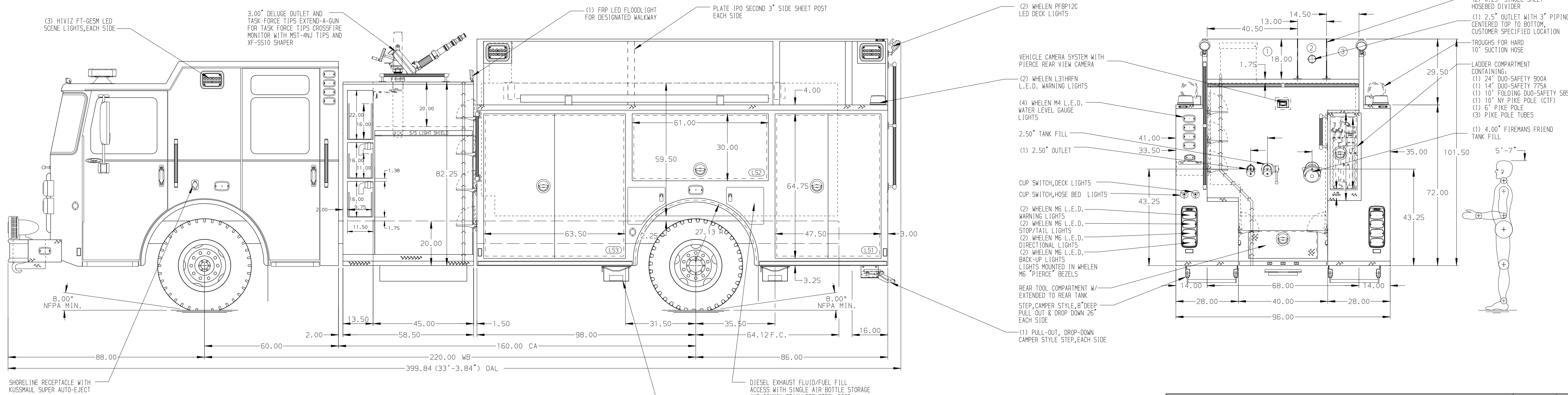


- HOSEBED CAPACITIES
- ① 1200' OF 5.00" RUBBER HOSE
 - ② 250' OF 3.00" D.J. POLY HOSE
 - ③ 800' OF 2.50" D.J. POLY HOSE



ALUMINUM BODY

NOTE
DIMENSIONS SHOWN ARE APPROXIMATE AND ARE SUBJECT TO MINOR DEVIATIONS AS MAY OCCUR OR BE NECESSARY IN CONSTRUCTION. MINOR DETAILS NOT SHOWN.

REV	DATE	BY	CH	SABER FR
18JAN22	JLA	GSC		
12NOV21	CDU	CZA		

		JOB NO.	36833
		SCALE	DATE
TITLE	1500-D-1800 GAL POLY, 184" FH FDLR BODY LADDERS BESIDE TANK, (2) SPEEDLAYS, (1) DEADLAY	DRAWN BY	04NOV21
FOR	CANTON TOWNSHIP FIRE DEPARTMENT CANTON, OHIO	CHECKED BY	05NOV21
DWG NO.	36833AD	SHEET SIZE	SHEET NO.
		D	1 OF 1