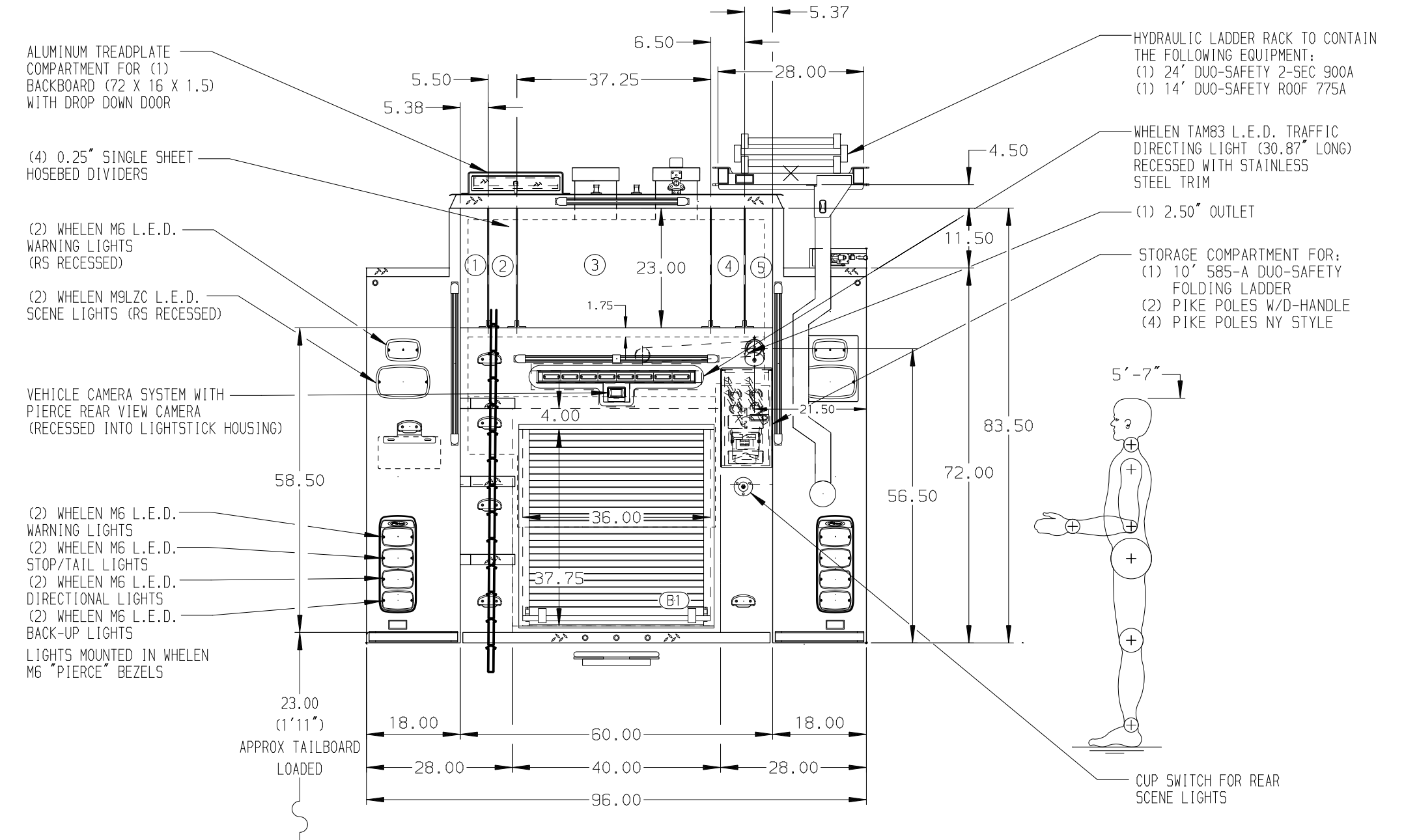


- HOSEBED CAPACITIES**
- ① 300' OF 2.50\"/>



ALUMINUM BODY SIDE ROLL AND FRONTAL IMPACT PROTECTION

- NOTE**
DIMENSIONS SHOWN ARE APPROXIMATE AND ARE SUBJECT TO MINOR DEVIATIONS AS MAY OCCUR OR BE NECESSARY IN CONSTRUCTION. MINOR DETAILS NOT SHOWN.
1. AIR INLET WITH DISCONNECT COUPLING LOCATED ON DS PUMP PANEL
 2. KUSSMAUL BATTERY CHARGER/INVERTER LOCATED BEHIND OFFICER'S SEAT
 3. ONE ADJUSTABLE FULL WIDTH/DEPTH SHELF LOCATED IN COMPARTMENTS RS2 AND B1; TWO IN LS1 AND RS3; THREE IN LS3 AND RS1
 4. ONE ADJUSTABLE SLIDE-OUT TRAY WITH SPECIAL DEPTH IN COMPARTMENT B1
 5. ONE FLOOR MOUNTED SLIDE-OUT TRAY WITH SPECIAL SIDES LOCATED IN COMPARTMENT RS1
 6. ONE FLOOR MOUNTED SLIDE-OUT TRAY WITH 2.00\"/>

11. HORIZONTAL EQUIPMENT MOUNTING TRACKS IN COMPARTMENT LS2
12. BATTERY CHARGER INDICATOR LOCATED ON DRIVER'S SEAT RISER

CUSTOMER APPROVAL	
APPROVED BY: _____	DATE: _____
CHASSIS DATA	TITLE
MAKE	FOR
PIERCE	REDDING FIRE DEPARTMENT
MODEL	REDDING, CALIFORNIA
ENFORCER	DWG NO.



JOB NO.	36861
SCALE	1:24
DATE	
DRAWN BY	SAM
CHECKED BY	WKL
SHEET SIZE	SHEET NO.
D	1 OF 1

1500-D-770P, 750G WATER W/20G FOAM, 152\"/>

36861AD