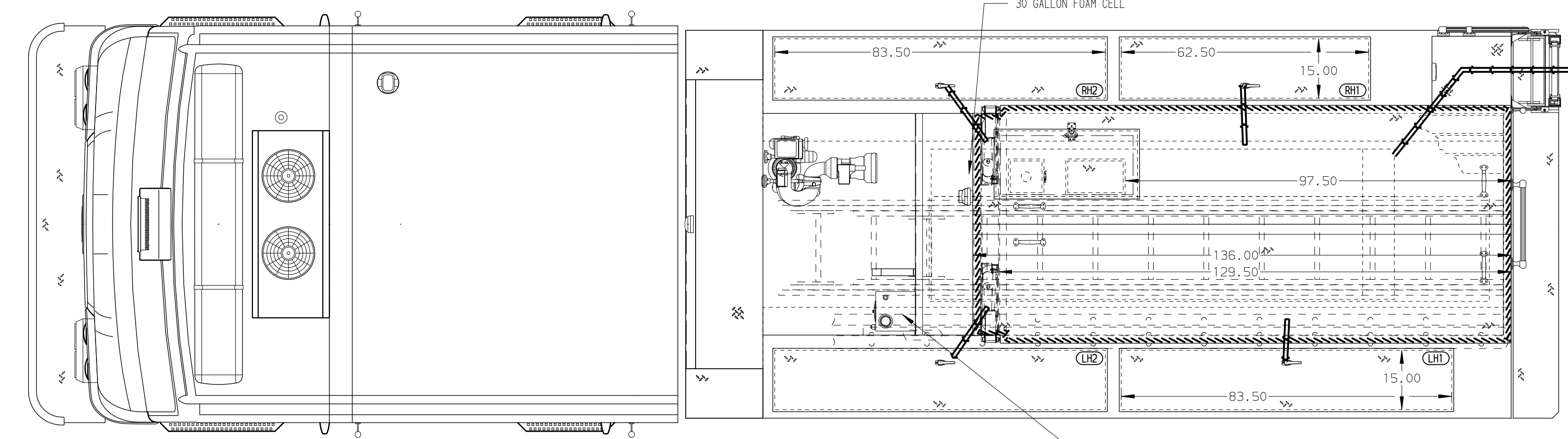
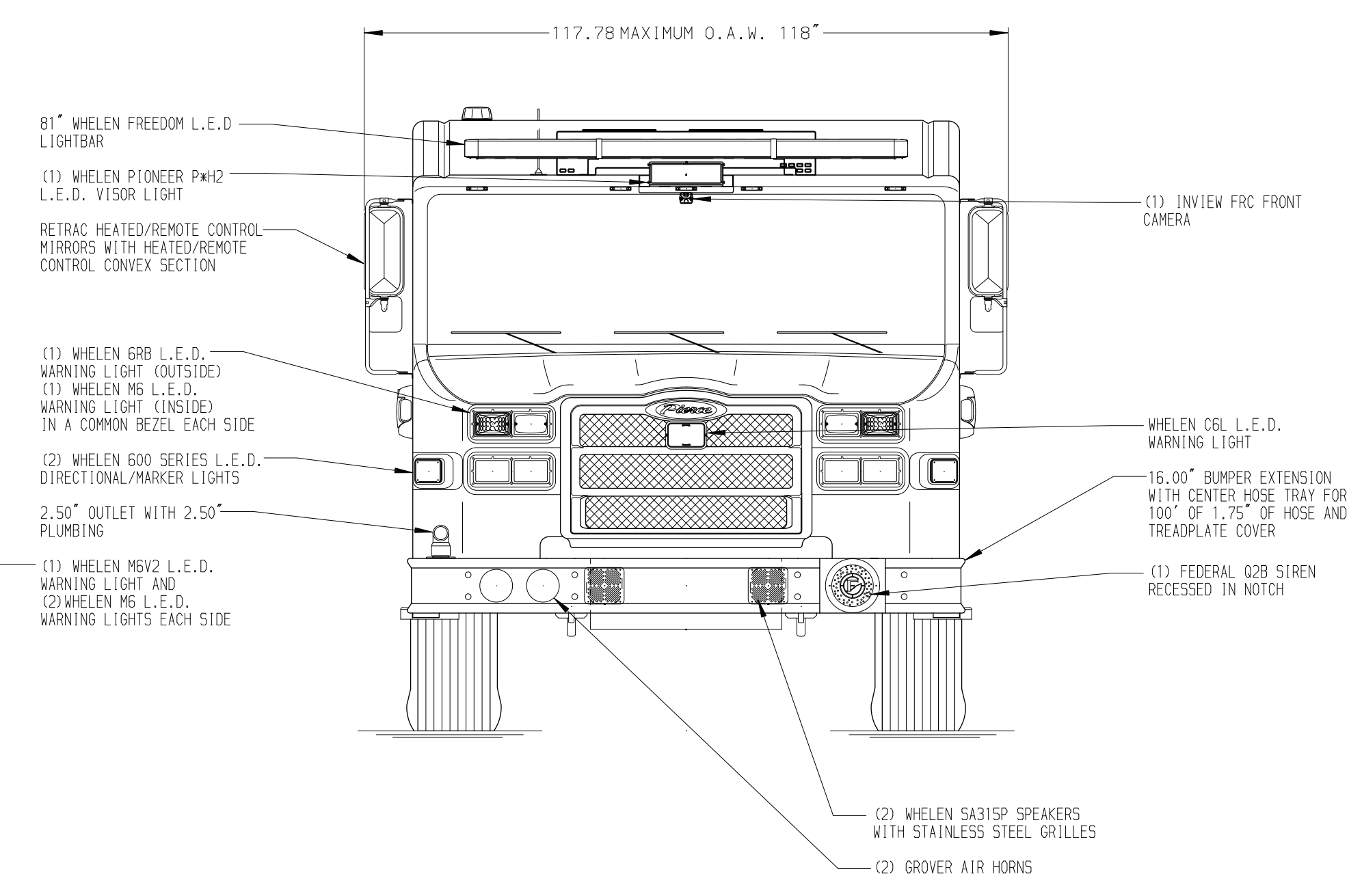
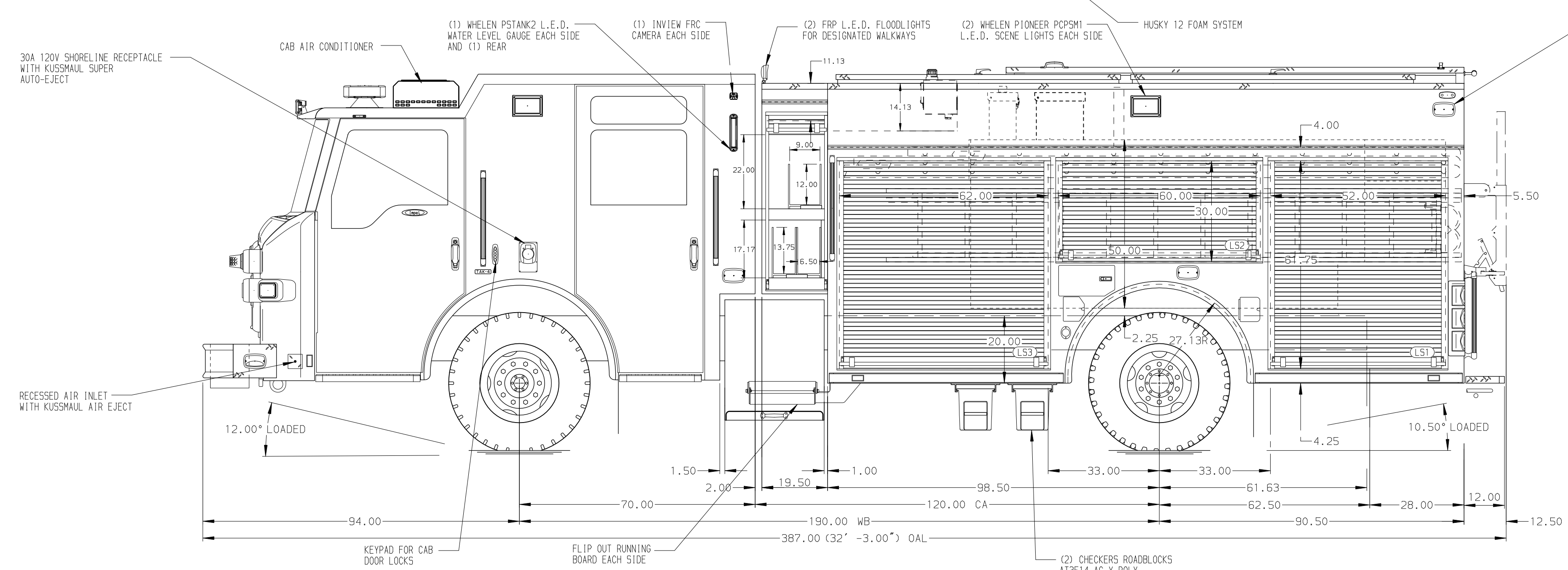
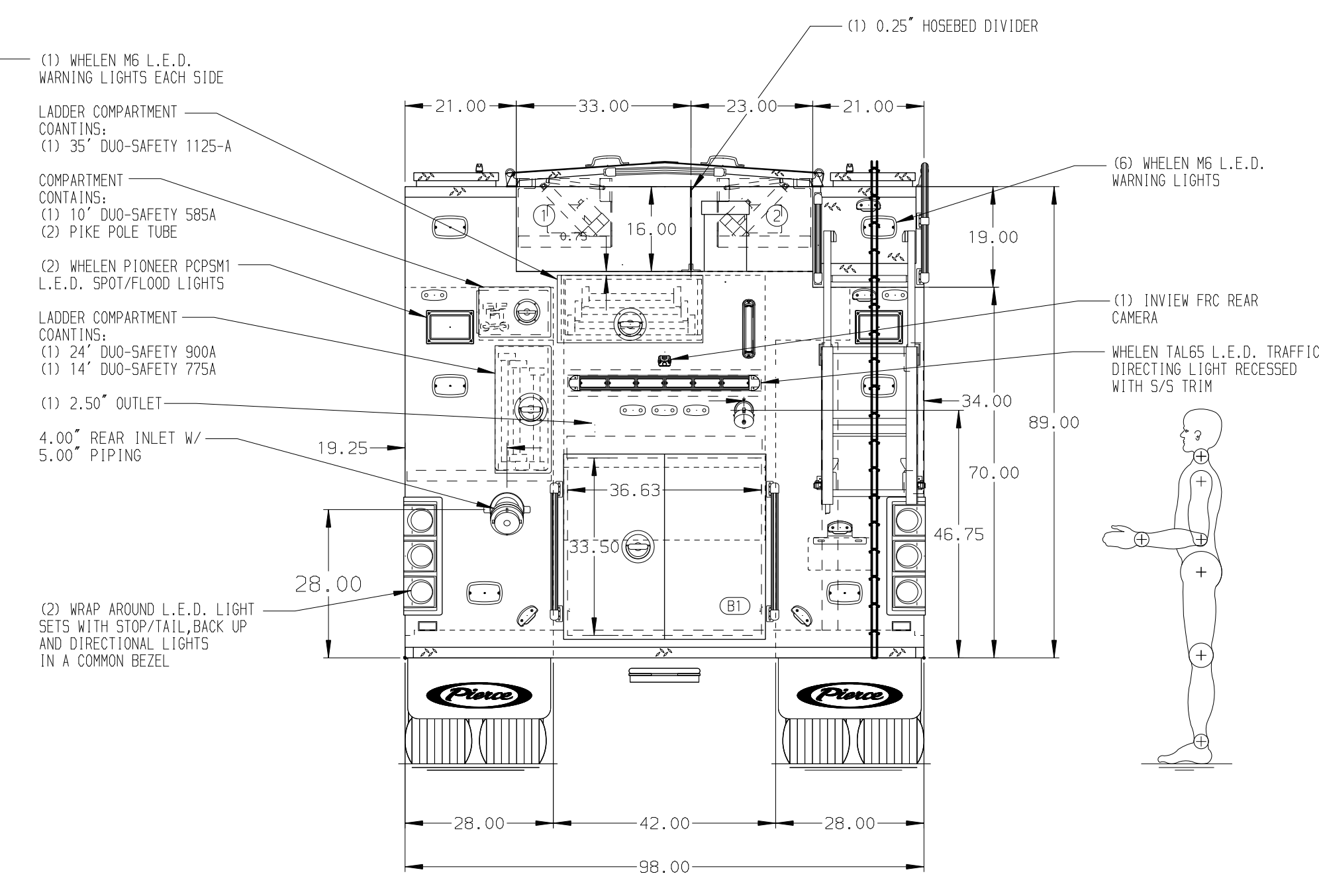


120.00
(10'-0")
APPROX
O.A.H.



HOSEBED CAPACITIES
 ① 1000' OF 4.00" D.J. POLY HOSE
 ② 800' OF 2.50" D.J. POLY HOSE



ALUMINUM BODY MAX O.A.L. 396" MAX O.A.H. 120" MAX O.A.W. 118" SIDE ROLL AND FRONTAL IMPACT PROTECTION

CUSTOMER APPROVAL				
APPROVED BY:		CHASSIS DATA	TITLE	1500-D-650P, 620G WATER 30 GAL FOAM, 189" RESCUE PUC
DATE:		MAKE	FOR	THRU TANK STORAGE, LS BODY LADDER STORAGE
		PIERCE		PENTICTON FIRE DEPARTMENT
		MODEL	DWG NO.	PENTICTON, BRITISH COLUMBIA
REV	DATE	BY	CH	IMPEL FR

Pierce MANUFACTURING INC.		JOB NO.	36864
		SCALE	1:24
		DATE	
		DRAWN BY	KLE
		CHECKED BY	CZA
		SHEET SIZE	D
		SHEET NO.	1 OF 1

NOTE
 DIMENSIONS SHOWN ARE APPROXIMATE AND ARE SUBJECT TO MINOR DEVIATIONS AS MAY OCCUR OR BE NECESSARY IN CONSTRUCTION. MINOR DETAILS NOT SHOWN.

- ANCHOR PLATE FOR NEDERMAN EXHAUST SYSTEM HOSE LOCATED PER ORDER
- BATTERY CHARGING RECEPTACLE LOCATED ADJACENT TO BATTERY
- DUAL L.E.D. LIGHT STRIPS LOCATED BELOW HOSE BED COVER
- NINE FULL WIDTH/DEPTH ADJUSTABLE SHELVES IN COMPARTMENT PER ORDER
- ONE ADJUSTABLE TILTING SLIDE-OUT TRAY LOCATED PER ORDER
- FOUR FLOOR MOUNTED SLIDE-OUT TRAYS LOCATED PER ORDER
- ONE SWING-OUT ALUMINUM TOOLBOARD LOCATED PER ORDER
- TWO SLIDE-OUT TOOLBOARDS WITH PEGBOARD PATTERN AND PAINTED FINISH LOCATED PER ORDER
- ONE VERTICAL DIVIDER LOCATED PER ORDER