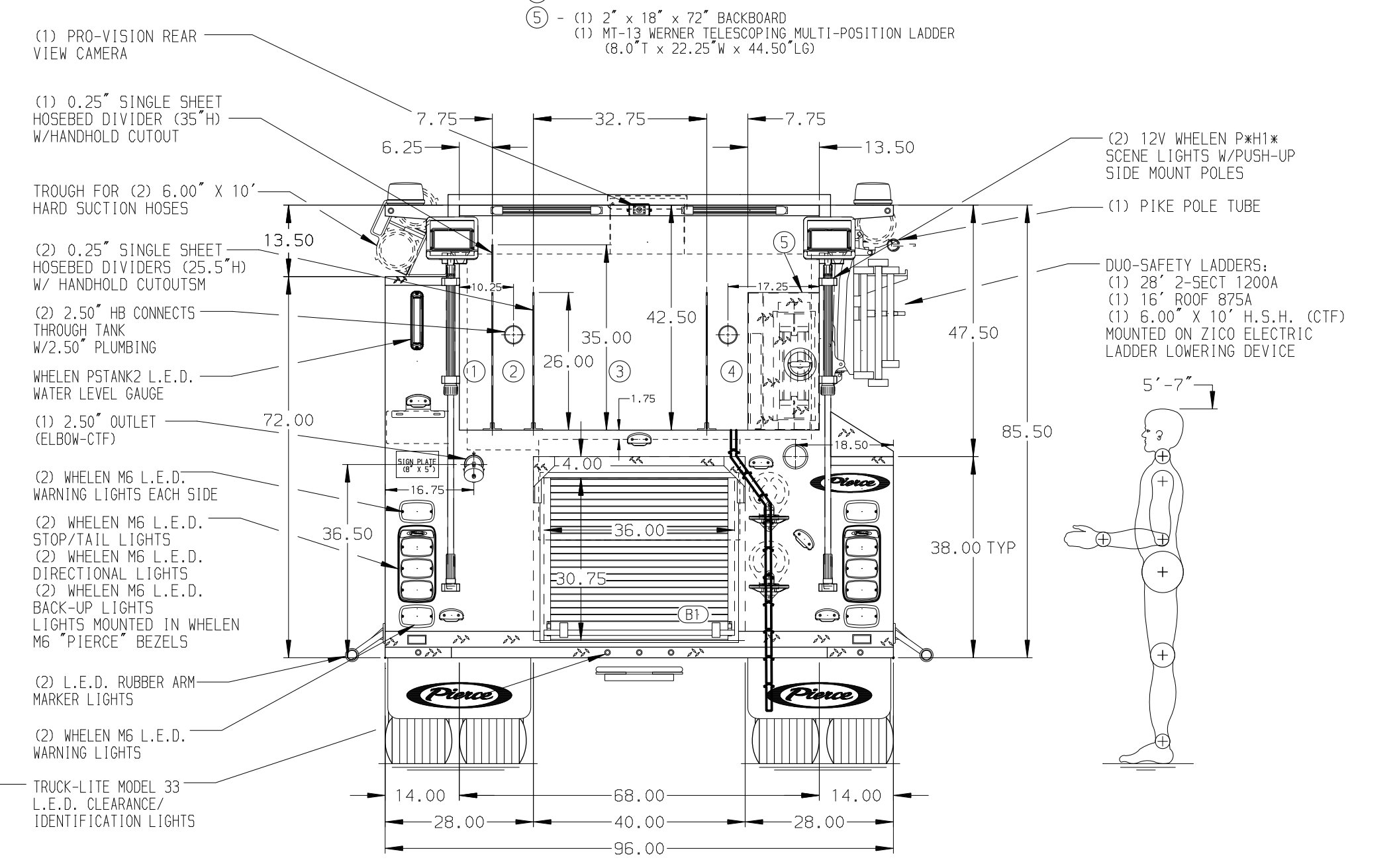


HOSEBED CAPACITIES

- 400' OF 3.00\"/>



ALUMINUM BODY SIDE ROLL AND FRONTAL IMPACT PROTECTION

NOTE

- PUMP PANEL DRAWING REQUIRED
- ONSPOUT AUTOMATIC TIRE CHAINS TO BE PROVIDED AT REAR
- VOGEL LUBE SYSTEM PUMP LOCATED PER SHOP ORDER
- ALUMINUM TREADPLATE EXTERIOR REAR WALL OF CAB
- STAINLESS STEEL SCUFFPLATE ON EACH CAB DOOR JAMB
- MOUNTING BASE FOR ANTENNA LOCATED PER SHOP ORDER
- BATTERY CHARGER/AIR COMPRESSOR LOCATED BEHIND DRIVER SEAT
- ANDOR LUMBAR H20 L.E.D. WALKING AREA LIGHTS LOCATED IN THE CARGO AREA
- STAINLESS STEEL FENDER CROWNS ON CAB AND BODY
- STAINLESS STEEL SCUFFPLATE ON REAR OUTER CORNER OF BODY
- STAINLESS STEEL SCUFFPLATE ON BOTTOM EDGE OF ALL DOOR FRAMING OF COMPARTMENTS
- PIERCE LOGO MUDFLAPS FRONT AND REAR
- BLACK PIERCE POLYUREA COATING ON TOP FLANGE OF THE FRONT BUMPER
- WHELEN COMPARTMENT LIGHTS PER ORDER
- ALL FOLDING STEPS TO BE TRIDENT
- SPLIT AND NOTCHED FOR ACCESS FLOOR IN CARGO AREA
- ONE PIKE POLE TUBE SHIPPED LOOSE

CUSTOMER APPROVAL			
REV	DATE	BY	CH

APPROVED BY: _____
DATE: _____

Pierce MANUFACTURING INC.

CHASSIS DATA
MAKE: PIERCE
MODEL: _____

TITLE: 1500-D 750 GAL POLY W/50 GAL FOAM CELL, 152"FH FDLER LOW SIDE PS, NY STYLE TANK, (4) XLAYS, DELUGE, (3)HSH
FOR: LOUDOUN COUNTY DEPT. OF FIRE AND EMERGENCY SERVICES
ASHBURN, VIRGINIA

DWG NO. 36869AD-SH1

JOB NO.	DATE
SCALE: 1:24	
DRAWN BY: KE5	21DEC21
CHECKED BY: JBL	03JAN22
SHEET SIZE: D	SHEET NO.: 1 OF 1