

# PUMPER BODY

Long Aluminum 2nd Gen Pumper

## CHASSIS

Enforcer Chassis

## CHASSIS AXLE, FRONT, CUSTOM

18,000 Lb Meritor Axle

## AXLE, REAR

27,000 Lb Meritor Axle

## ENGINE

450 HP Cummins L9 Engine

## TRANSMISSION

Allison 5th Gen, 3000 EVS P

## BUMPER

22" Extended Stainless Steel

## CAB

7010 Enforcer Cab

## BODY WATER TANK

750 Gallon New York Style Water Tank

## COMPT, PUMPER, REAR

30.75" FF RollUp Rear Compt

## COMPT, PUMPER, LEFT SIDE

161" RollUp Full Height & Depth Front & Rear

## COMPT, PUMPER, RIGHT SIDE

161" RollUp Low

## FIRE SUPPRESSION PUMPHOUSE

45" Control Zone Side Mount

## PUMP

2000 GPM Hale QMAX-200

## CROSSLAYS, 1.50"

(2) 1.50" Standard Capacity

## CROSSLAYS, 2.50"

2.50" Crosslay Not Required

## SPEEDLAYS

Speedlays Not Required

## GENERATOR

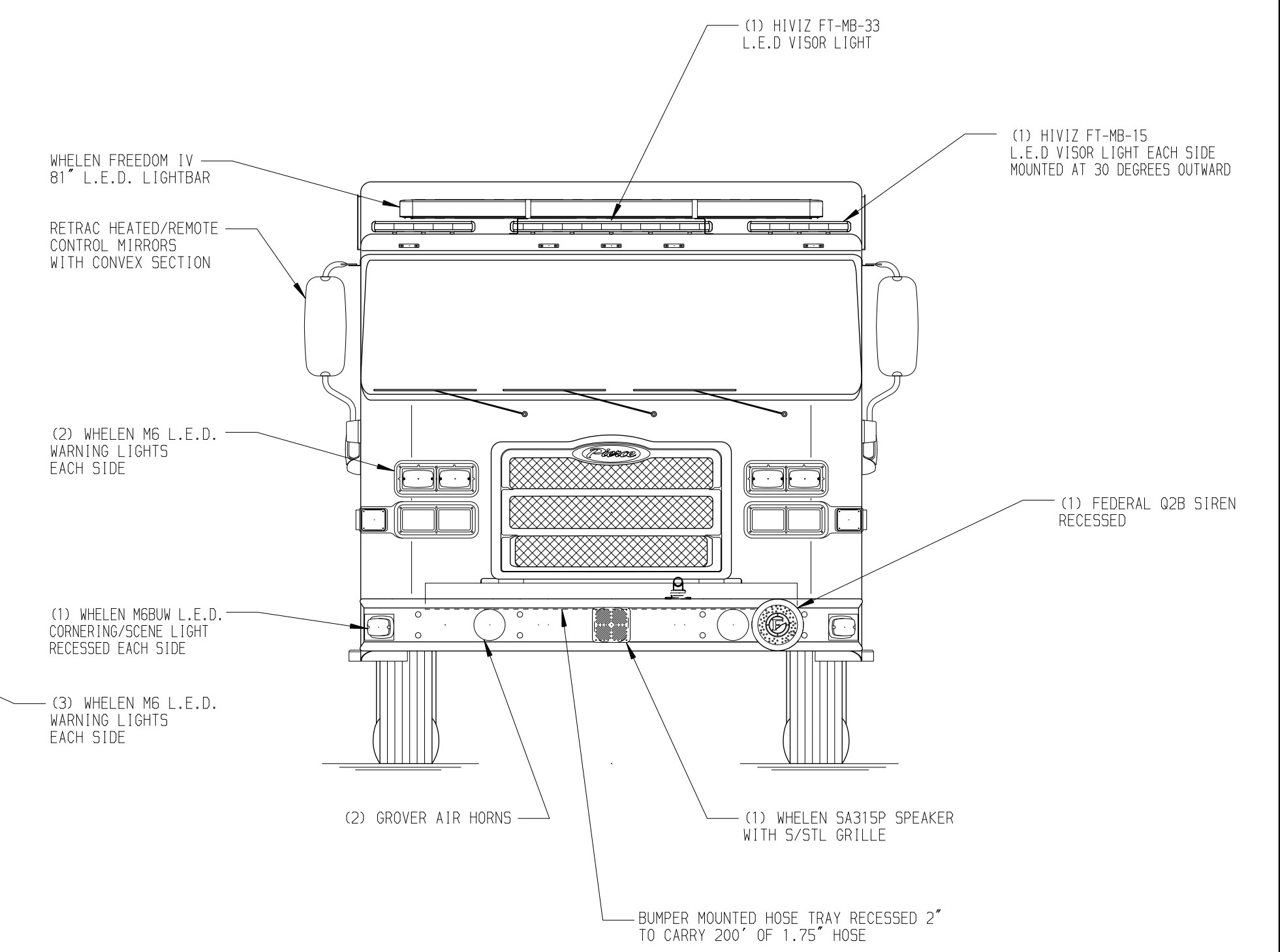
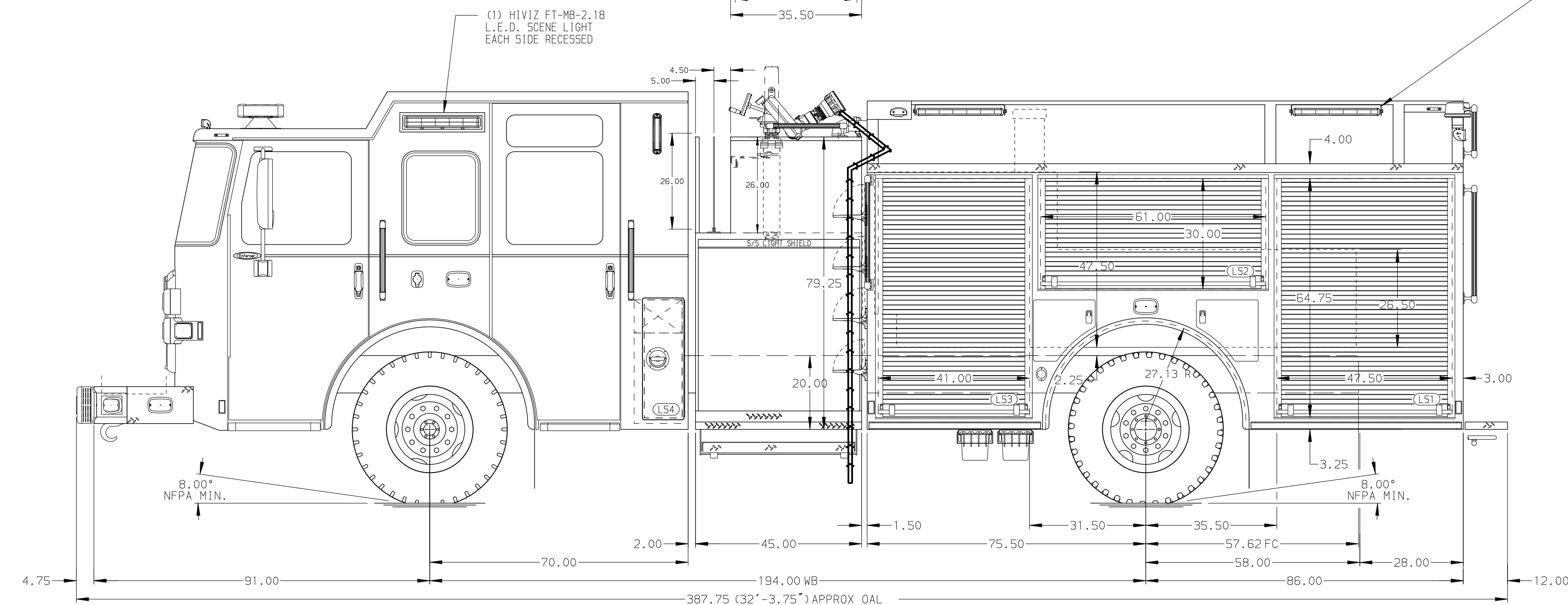
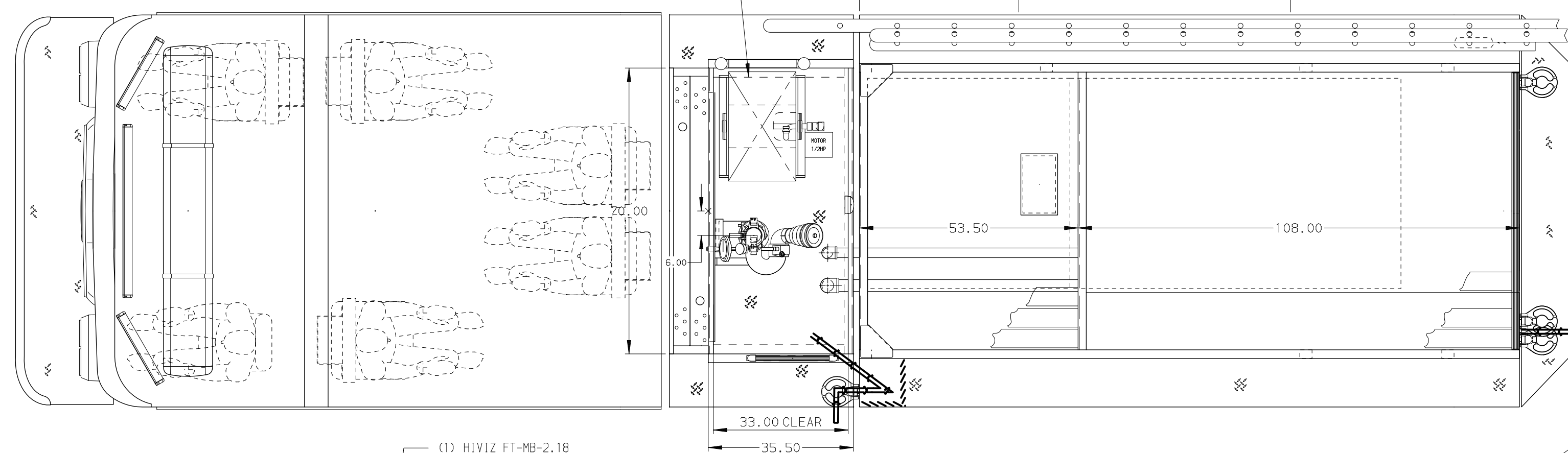
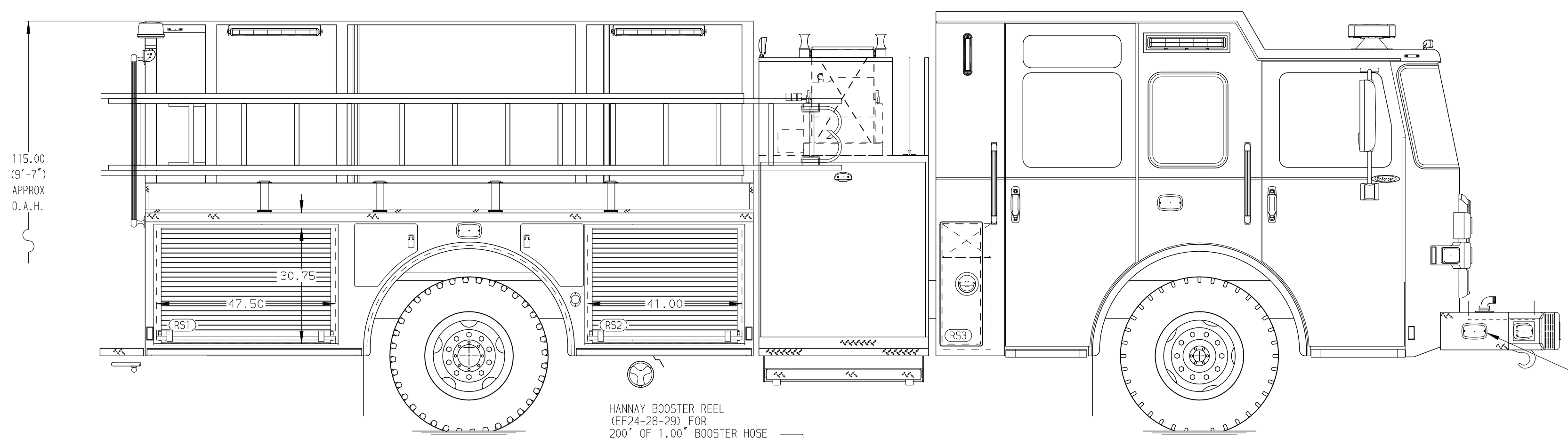
Generator Not Required

## Foam System

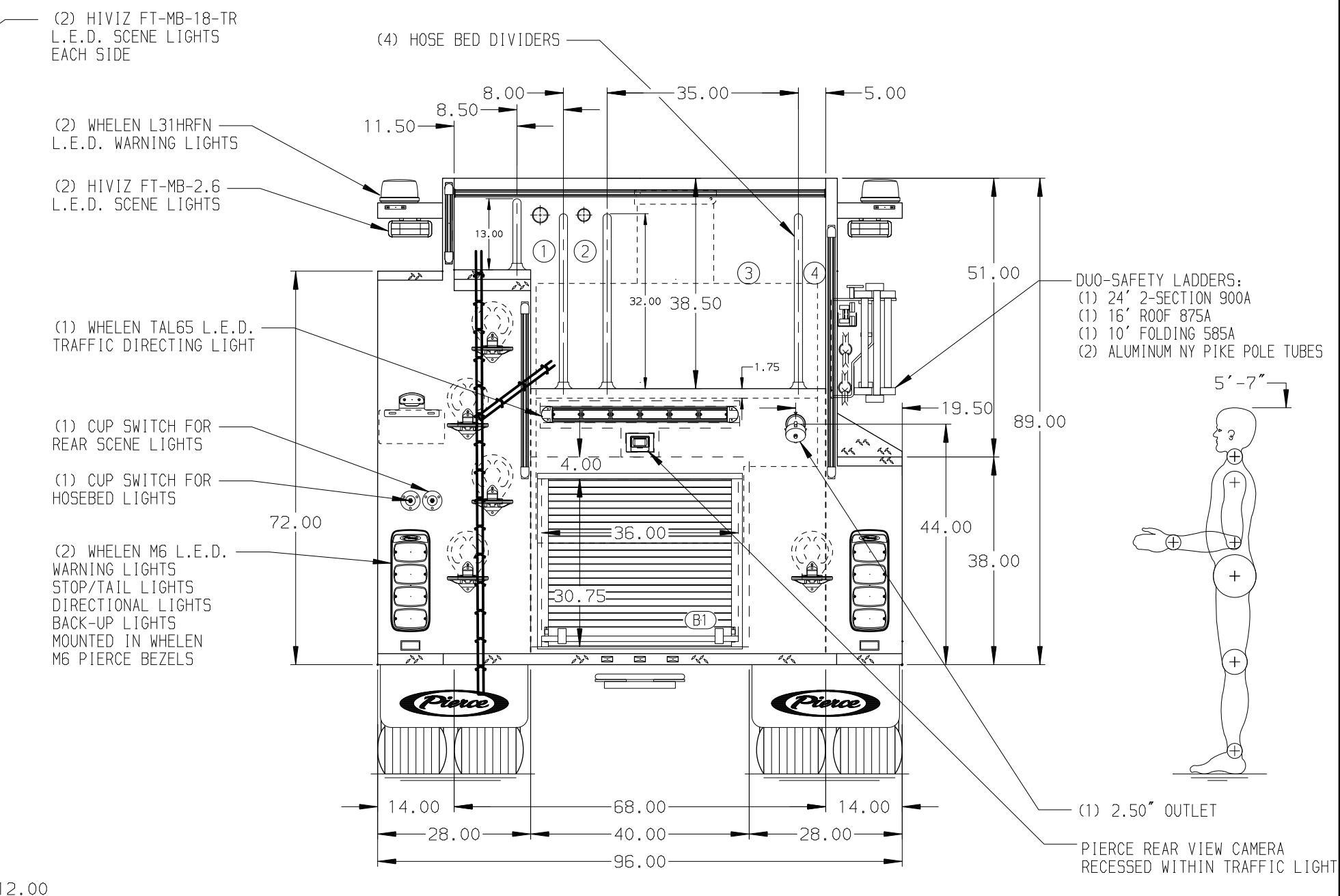
Foam System Not Required

## Foam Cell

Foam Cell Not Required



HOSEBED CAPACITY	
BED 1	200' OF 2.50" D.J. POLY HOSE
BED 2	400' OF 1.75" D.J. POLY HOSE
BED 3	1200' OF 5.00" D.J. POLY HOSE
BED 4	300' OF 3.00" D.J. POLY HOSE



MAXIMUM O.A.H. 120.00"

**NOTE**  
DIMENSIONS SHOWN ARE APPROXIMATE AND ARE SUBJECT TO MINOR DEVIATIONS AS MAY OCCUR OR BE NECESSARY IN CONSTRUCTION. MINOR DETAILS NOT SHOWN.

- ONE 1.50 OUTLET WITH 2.00 PIPING AND SKIVEL LOCATED ON TOP BUMPER CENTER
- SHORELINE RECEPTACLE WITH KUSSMAUL SUPER AUTO-EJECT LOCATED ON DRIVER SIDE OF THE CAB
- AIR INLET WITH DISCONNECT COUPLING IN THE DRIVER SIDE STEPWELL
- BATTERY CHARGER LOCATED IN COMPARTMENT PER SHOP ORDER
- BATTERY CHARGE INDICATOR LOCATED ON THE DRIVER SIDE SEAT RISER
- AUTOMATIC TIRE CHAINS

REV	DATE	BY	CH	ENFORCER
12JAN22	MMF	COS		
07JAN22	MMF	COS		

	JOB NO.	36870
	SCALE	DATE
TITLE	Pierce Pumper Approval Drawing	
MAKE		
FOR	Spring Mill Fire Company	
CHECKED BY	COL	050CT21
DWG NO.	36870AD	
SHEET SIZE	D	SHEET NO. 1 OF 1