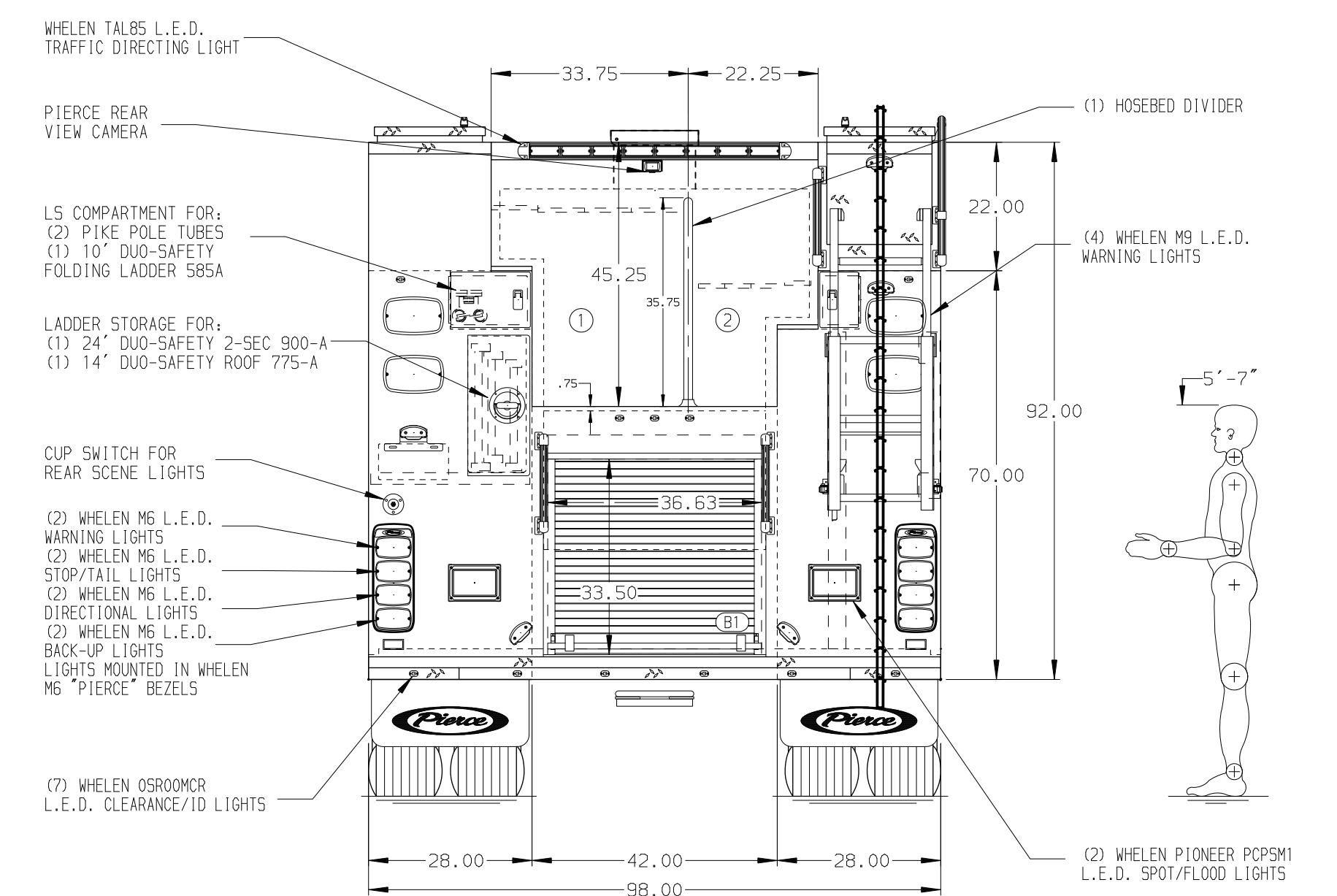
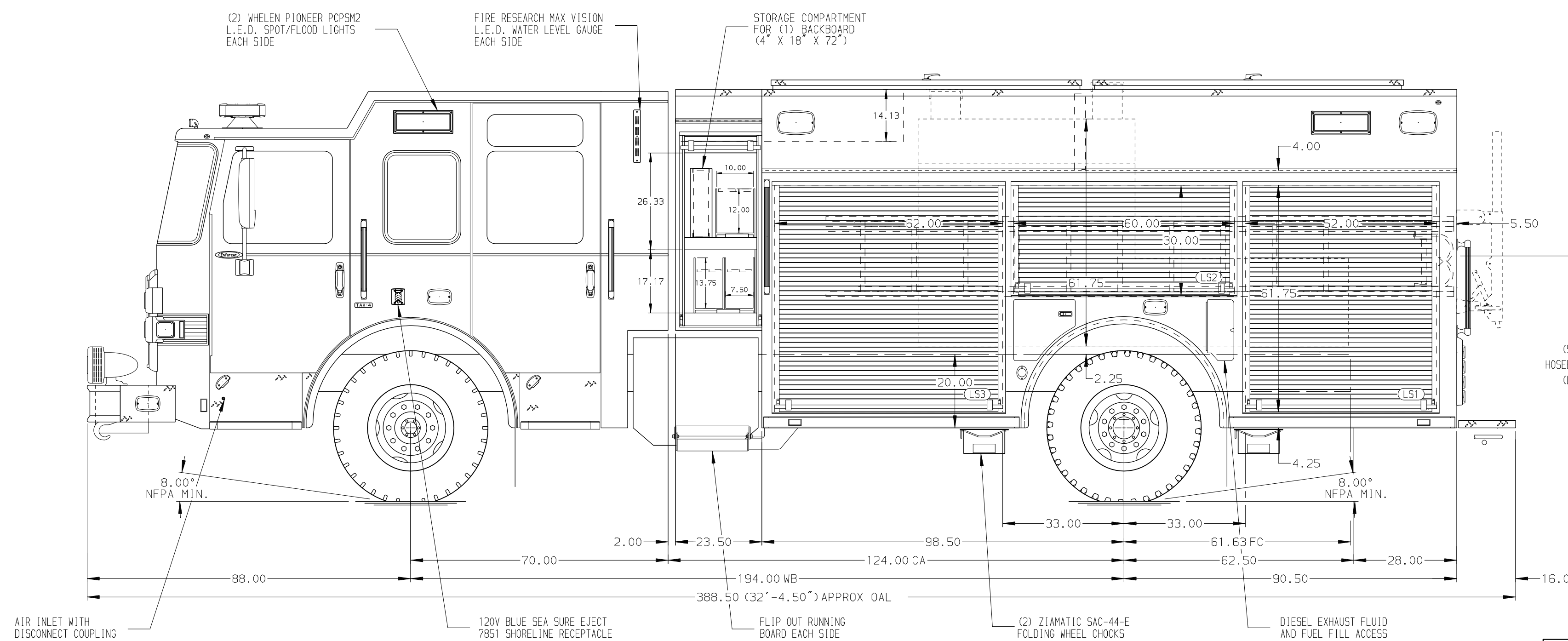


HOSEBED CAPACITIES

① - 1000' OF 5.00" D.J. POLY HOSE

② - 600' OF 2.50" D.J. POLY HOSE



ALUMINUM BODY

NOTE
DIMENSIONS SHOWN ARE APPROXIMATE AND ARE SUBJECT TO MINOR DEVIATIONS AS MAY OCCUR OR BE NECESSARY IN CONSTRUCTION. MINOR DETAILS NOT SHOWN.

- DUAL L.E.D. LIGHT STRIPS LOCATED IN HOSE BED
- BATTERY CHARGER LOCATED IN COMPARTMENT PER SHOP ORDER
- BATTERY CHARGE INDICATOR LOCATED ON THE DRIVER SIDE SEAT RISER
- FOUR ADJUSTABLE SHELVES IN COMPARTMENTS PER SHOP ORDER
- TWO FLOOR MOUNTED SLIDE-OUT TRAY IN COMPARTMENT PER SHOP ORDER
- TWO SWING-OUT TOOLBOARDS IN COMPARTMENTS PER SHOP ORDER

CUSTOMER APPROVAL			
APPROVED BY:			
DATE:			
CHASSIS DATA	TITLE	2000-D-750P, 730G WATER, 20G FOAM, 189" FH/FD PUC LADDERS IN LS BODY, (3) CROSSLAYS, DELUGE, HUSKY 3	
MAKE	FOR	PIERCE FIELD UNIT APPLETON, WISCONSIN	
MODEL	DWG NO.	36882AD	
REV	DATE	BY	CH ENFORCER



JOB NO.	36882
SCALE	1:24
DATE	
DRAWN BY	JJB
CHECKED BY	CZA
SHEET SIZE	D
SHEET NO.	1 OF 1