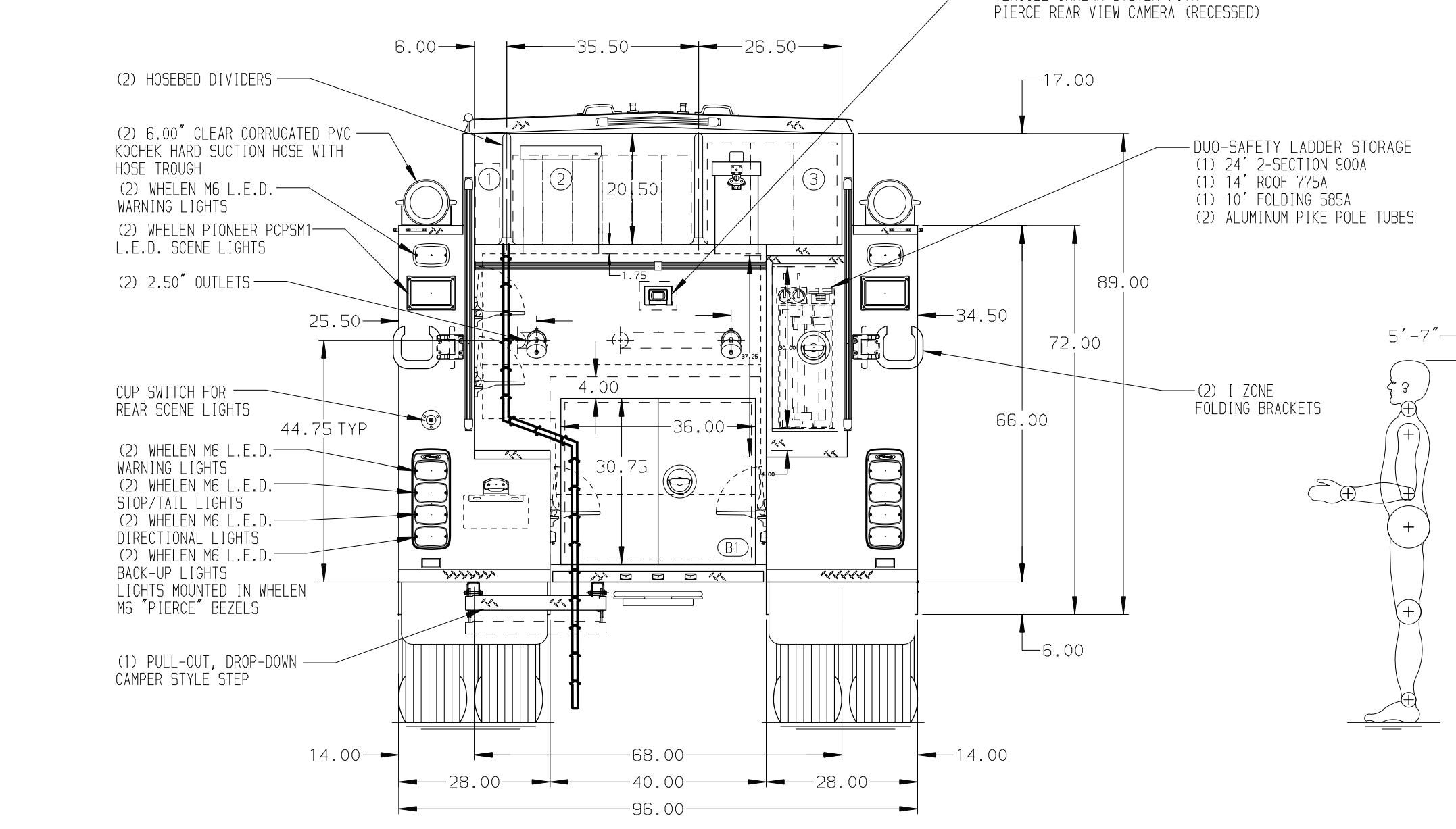


**HOSEBED CAPACITIES**

① - 200' OF 2.50" DJP HOSE

② - 1200' OF 3.00" DJP HOSE

③ - 700' OF 5.00" DJP HOSE



ALUMINUM BODY

MAXIMUM O.A.L. 354"

MAXIMUM O.A.H. 120"

**NOTE**  
DIMENSIONS SHOWN ARE APPROXIMATE AND ARE SUBJECT TO MINOR DEVIATIONS AS MAY OCCUR OR BE NECESSARY IN CONSTRUCTION.  
MINOR DETAILS NOT SHOWN.

1. BATTERY CHARGER LOCATED BEHIND THE DRIVER'S SEAT
2. BATTERY CHARGER INDICATOR LOCATED ON DRIVER'S SEAT RISER
3. DUAL L.E.D. LIGHT STRIPS IN HOSE BED COVER
4. REVERSED HINGE DOOR ON COMPARTMENT LS3
5. DUAL L.E.D. LIGHT STRIPS IN SIDE BODY COMPARTMENT DOORS
6. ONE ADJUSTABLE FULL WIDTH/DEPTH SHELF LOCATED IN COMPARTMENTS LS2, LS3, AND RS2; TWO IN LS1, RS1; THREE IN RS3
7. ONE SLIDE OUT TRAY LOCATED IN COMPARTMENT LS3
8. ONE FLOOR MOUNTED TRAY LOCATED IN COMPARTMENT LS1 AND RS1
9. FOAM PRO 1600 SINGLE AGENT FOAM SYSTEM LOCATED PER SHOP ORDER
10. DARLEY 2.54GV HYD DRIVE AUXILIARY PUMP LOCATED INSIDE PUMPHOUSE

CUSTOMER APPROVAL		
APPROVED BY:		
DATE:		
REV	DATE	BY
	12JAN22	SAM
		WKL
		CH

**Pierce MANUFACTURING INC.**

TITLE: 1500-D-870P, 850G WATER W/20G FOAM, 152" FH FDLER (2) XLAYS, LADDERS BTWN TANK & SS, AUX PUMP, DELUGE

FOR: WHEATLAND FIRE AUTHORITY WHEATLAND, CALIFORNIA

DWG NO. 36903AD

JOB NO.	36903
SCALE	1:24
DATE	
DRAWN BY	SAM
CHECKED BY	WKL
SHEET SIZE	D
SHEET NO.	1 OF 1