

# PUMPER BODY

Long Aluminum 2nd Gen Pumper

## CHASSIS

Enforcer Chassis

## CHASSIS AXLE, FRONT, CUSTOM

18,000 Lb Meritor Axle

## AXLE, REAR

24,000 Lb Meritor Axle

## ENGINE

450 HP Cummins L9 Engine

## TRANSMISSION

Allison 5th Gen, 3000 EVS P

## BUMPER

19" Extended Stainless Steel

## CAB

7000 Enforcer Cab

## BODY

### WATER TANK

750 Gallon New York Style Water Tank

### COMPT, PUMPER, REAR

30.75" FF Lap Rear Compt, L5 Door Only

### COMPT, PUMPER, LEFT SIDE

161" Lap Full Height Front & Rear FDLER

### COMPT, PUMPER, RIGHT SIDE

161" Lap Low FDLER

## FIRE SUPPRESSION PUMPHOUSE

48" Control Zone Side Mount

### PUMP

2000 GPM Hale QMAX-200

### CROSSLAYS, 1.50"

(2) 1.50" Standard Capacity

### CROSSLAYS, 2.50"

(1) 2.50" Standard Capacity

### SPEEDLAYS

Speedlays Not Required

### GENERATOR

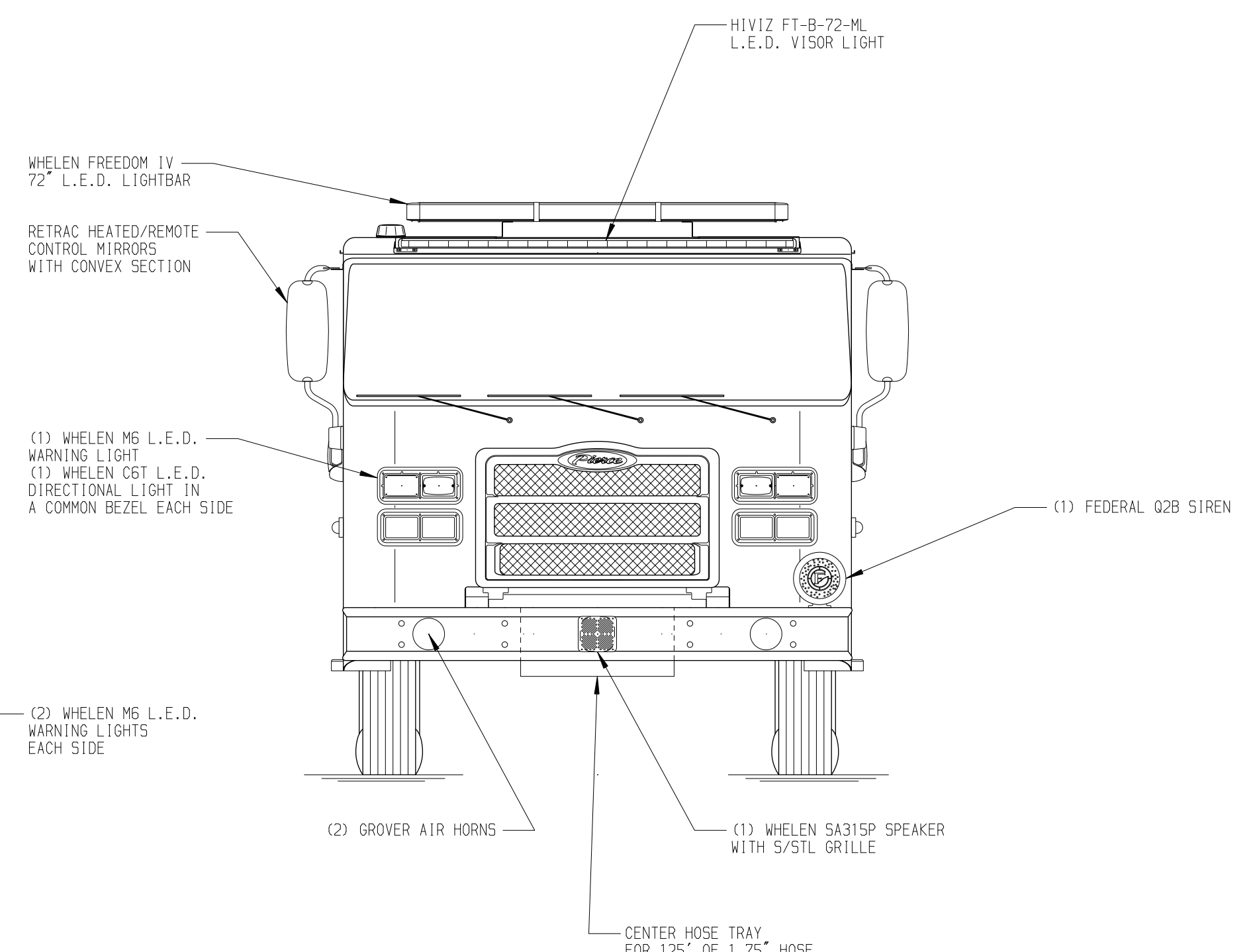
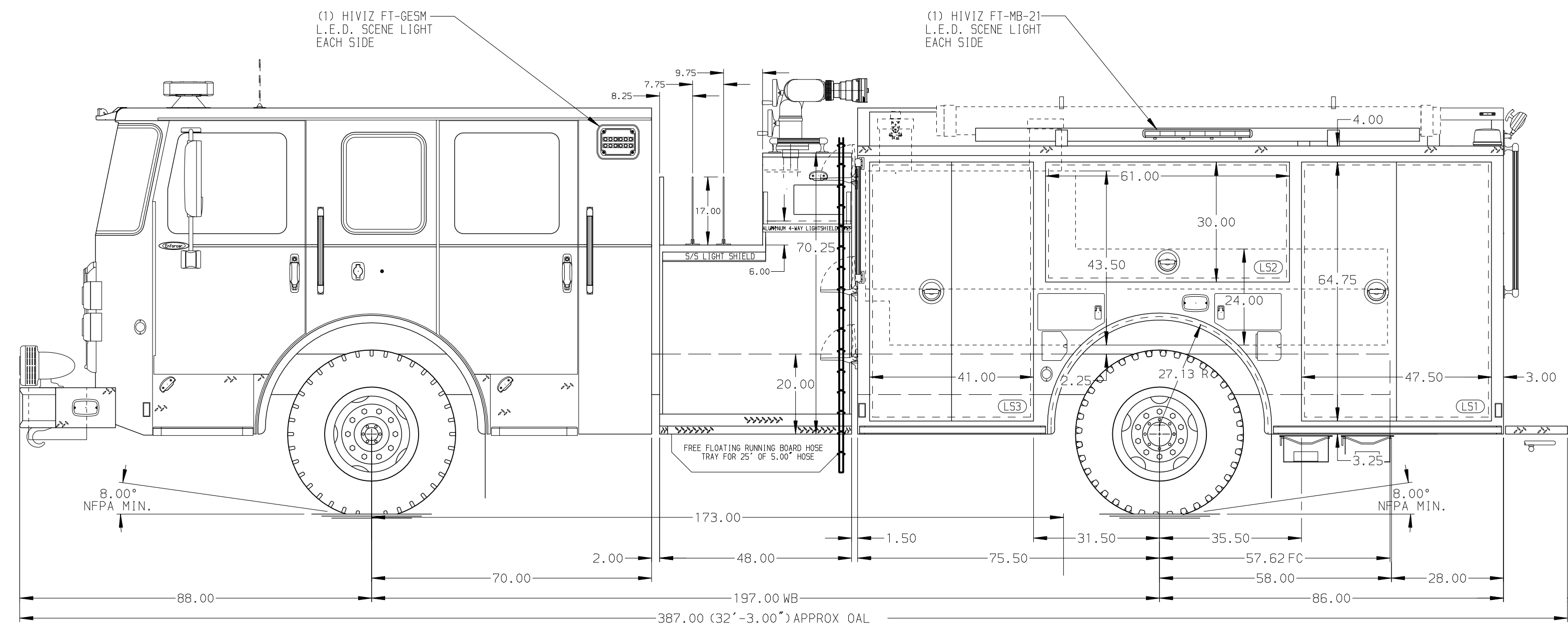
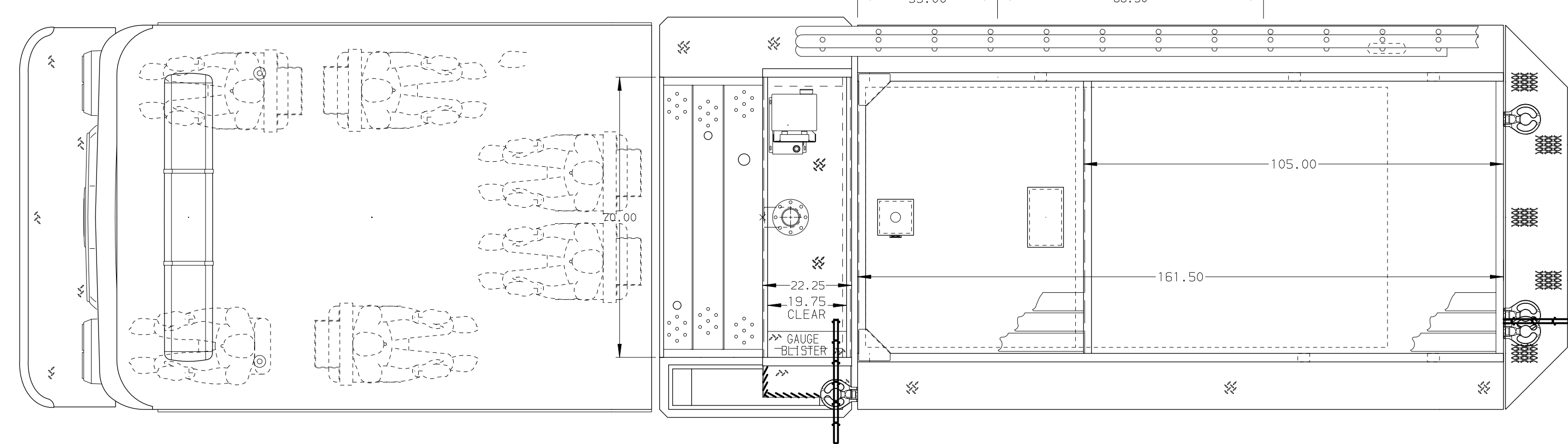
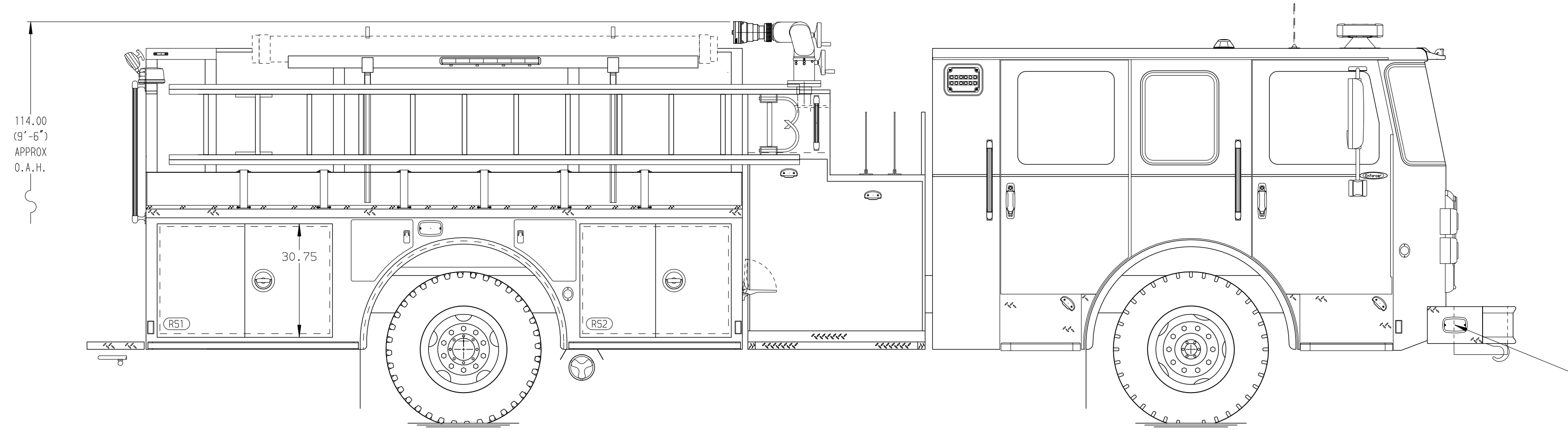
Generator Not Required

### Foam System

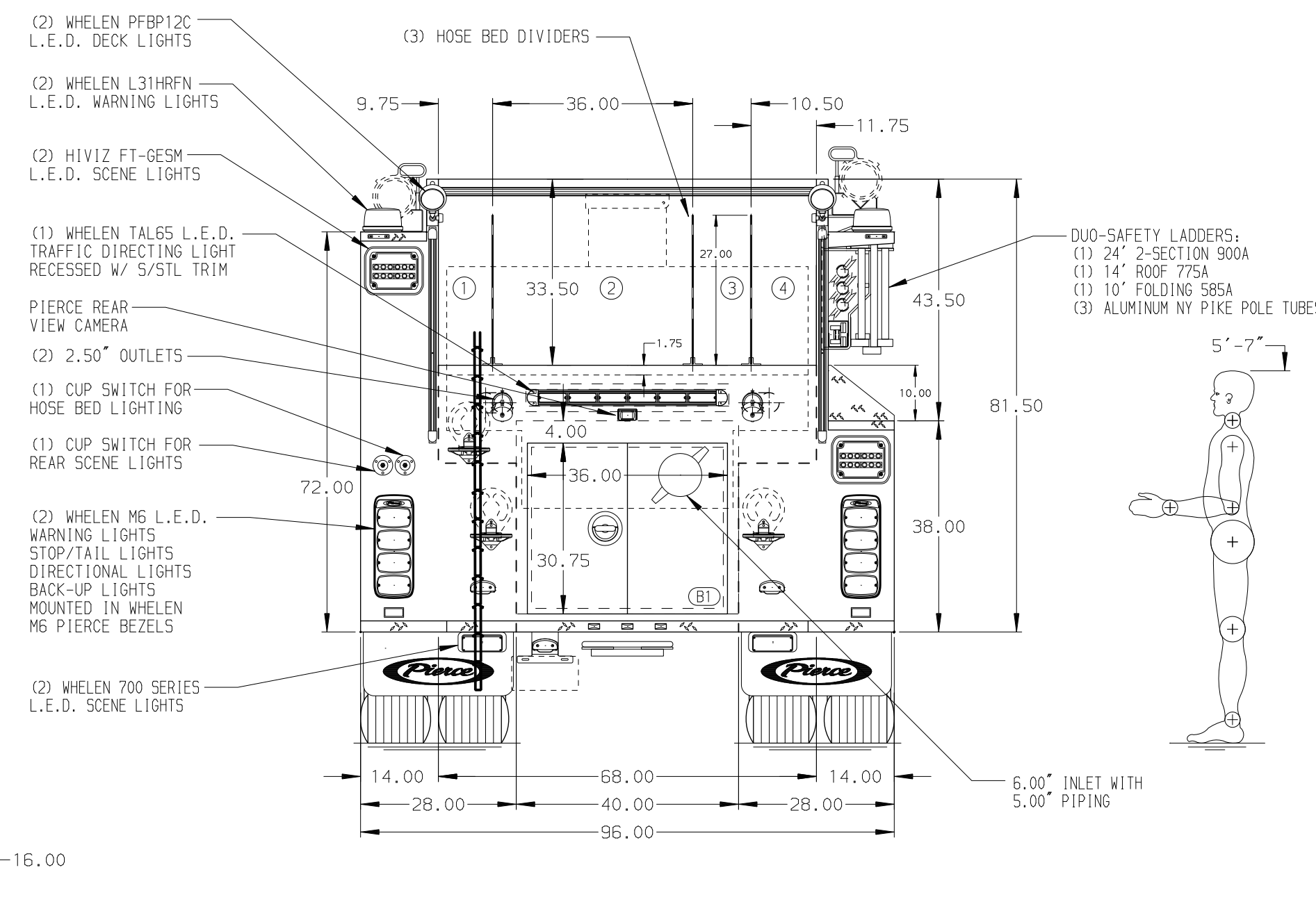
Husky 3 Single Agent Foam System

### Foam Cell

20 Gal Foam Cell Not Reduce



| HOSEBED CAPACITY |                               |
|------------------|-------------------------------|
| BED 1            | 400' OF 2.50" D.J. POLY HOSE  |
| BED 2            | 1000' OF 5.00" D.J. POLY HOSE |
| BED 3            | 400' OF 2.50" D.J. POLY HOSE  |
| BED 4            | 400' OF 3.00" D.J. POLY HOSE  |



**NOTE**  
DIMENSIONS SHOWN ARE APPROXIMATE AND ARE SUBJECT TO MINOR DEVIATIONS AS MAY OCCUR OR BE NECESSARY IN CONSTRUCTION. MINOR DETAILS NOT SHOWN.

- ONE 1.50 OUTLET WITH 2.00 PIPING AND SWIVEL LOCATED IN CENTER BUMPER TRAY
- SHORELINE RECEPTACLE WITH KUSSMAUL SUPER AUTO-EJECT LOCATED ON DRIVER SIDE OF THE CAB
- AIR INLET WITH DISCONNECT COUPLING ON DRIVER SIDE OF THE CAB
- BATTERY CHARGER LOCATED IN COMPARTMENT PER SHOP ORDER
- BATTERY CHARGE INDICATOR LOCATED ON THE DRIVER SIDE SEAT RISER
- FOUR ADJUSTABLE SHELVES LOCATED PER SHOP ORDER
- FIVE FLOOR MOUNTED SLIDE-OUT TRAYS LOCATED PER SHOP ORDER
- ONE 120V 5-PLACE RECEPTACLE LOCATED PER SHOP ORDER
- TWO 120V DUPLEX RECEPTABLES LOCATED PER SHOP ORDER

| CUSTOMER APPROVAL |      |    |    |
|-------------------|------|----|----|
| APPROVED BY:      |      |    |    |
| DATE:             |      |    |    |
| REV               | DATE | BY | CH |
|                   |      |    |    |

|         |                                |            |             |
|---------|--------------------------------|------------|-------------|
|         |                                | JOB NO.    | 36936       |
|         |                                | SCALE      | DATE        |
| TITLE   | Pierce Pumper Approval Drawing | DRAWN BY   | COL 24MAR21 |
| FOR     | Canton Fire Department         | CHECKED BY | COL 29NOV21 |
| DWG NO. | 36936AD                        | SHEET SIZE | SHEET NO.   |
|         |                                | D          | 1 OF 1      |