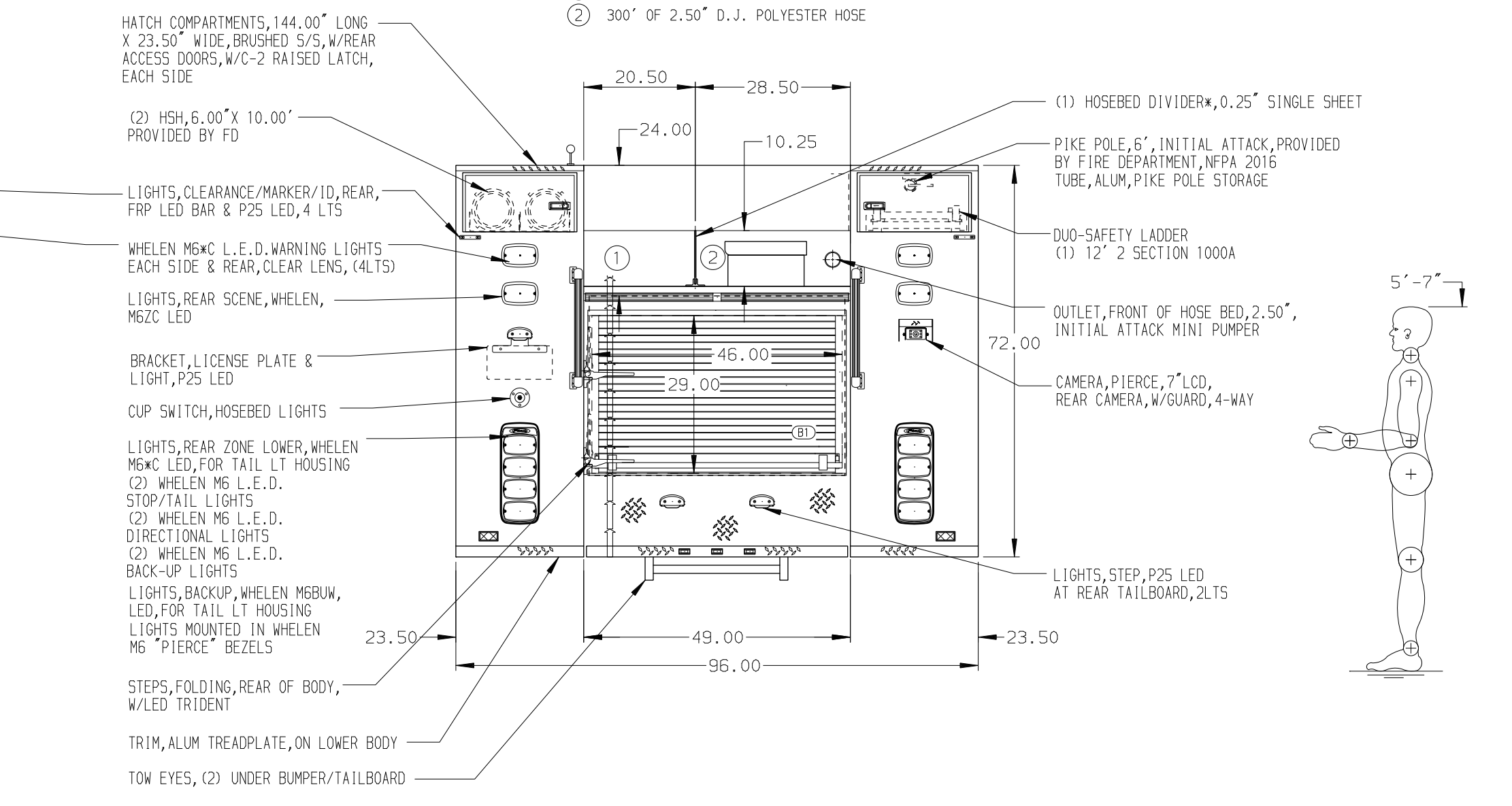
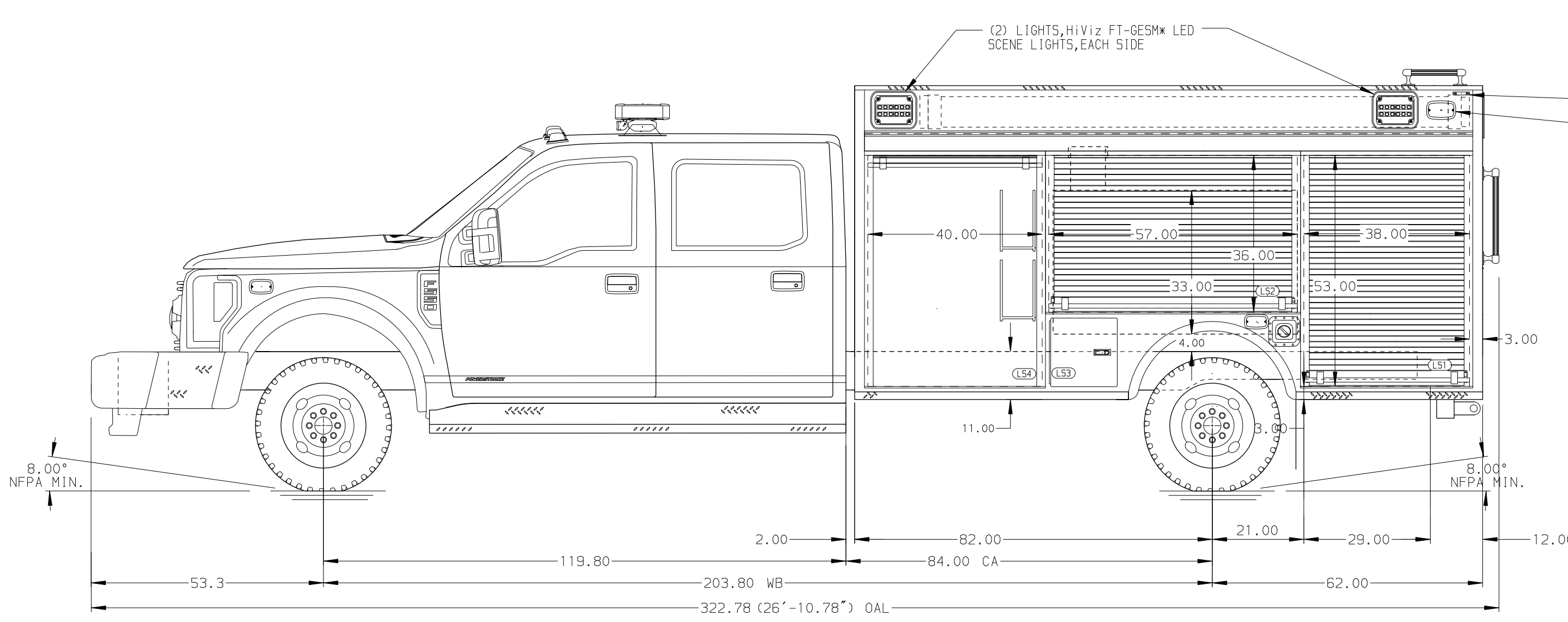


- HOSEBED CAPACITIES
- ① 400' OF 1.50" D.J. POLYESTER HOSE
 - ② 300' OF 2.50" D.J. POLYESTER HOSE



ALUMINUM BODY

NOTE
DIMENSIONS SHOWN ARE APPROXIMATE AND ARE SUBJECT TO MINOR DEVIATIONS AS MAY OCCUR OR BE NECESSARY IN CONSTRUCTION. MINOR DETAILS NOT SHOWN.

| | | | |
|--|---|-----------|---------|
| <p>MANUFACTURING INC. BRADENTON, FLORIDA</p> | | JOB NO. | 36966 |
| | | DATE | 16FEB22 |
| TITLE | 1500-D-300 POLY, 84" CA, MINI PUMPER BODY (2) SPEEDLAYS | SCALE | 1:24 |
| FOR | CITY OF LOUDON FIRE DEPARTMENT LOUDON, TENNESSEE | DRAWN BY | JLA |
| MODEL | F-550 4X4 | CHK'D BY | RWI |
| REV. | DATE BY CHK'D | SHEET NO. | 1 OF 1 |
| DRWG. NO. | | 36966AD | |
| SHEET SIZE | | D | |