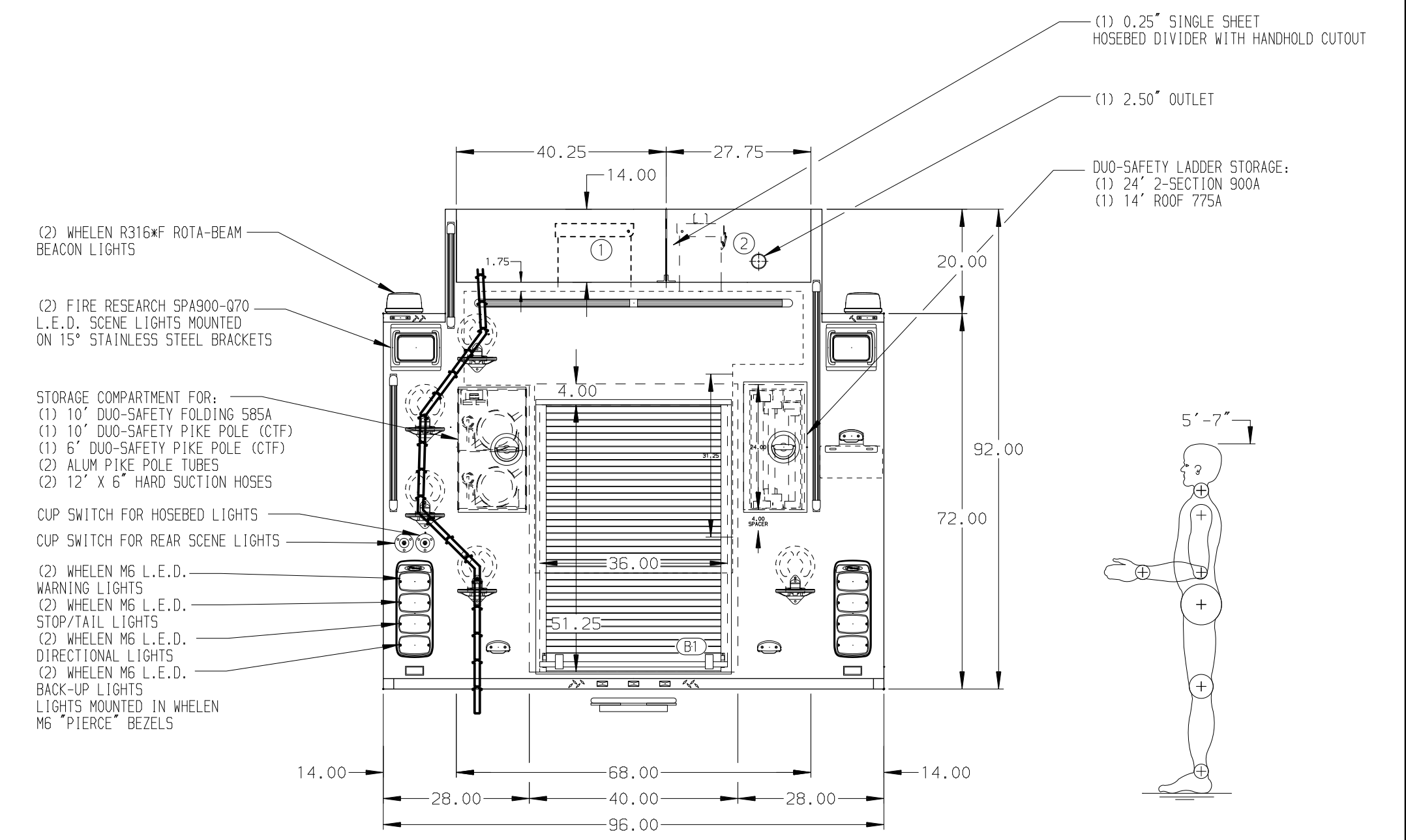


HOSEBED CAPACITIES

① - 1000' OF 5.00" D.J. POLY HOSE

② - 1000' OF 3.00" D.J. POLY HOSE



ALUMINUM BODY

NOTE
DIMENSIONS SHOWN ARE APPROXIMATE AND ARE SUBJECT TO MINOR DEVIATIONS AS MAY OCCUR OR BE NECESSARY IN CONSTRUCTION. MINOR DETAILS NOT SHOWN.

CUSTOMER APPROVAL				Pierce MANUFACTURING INC.		JOB NO.	37011
APPROVED BY: _____						SCALE	DATE
DATE: _____						1:24	
CHASSIS DATA	TITLE	1500-D-1500P, 1475G WATER W/25G FOAM, 171" FDLER LADDERS BTWN TANK & SS, COMPARTMENT FOR (2) HSH		DRAWN BY	KLE		22DEC21
MAKE	FOR	ATLANTA NORTH COHOCTON FIRE DEPARTMENT		CHECKED BY	PHA		22DEC21
PIERCE	MODEL	ATLANTA, NEW YORK		SHEET SIZE	D		SHEET NO.
07JAN21	KLE	PHA		37011AD			1 OF 1
REV	DATE	BY	CH	SABER FR			