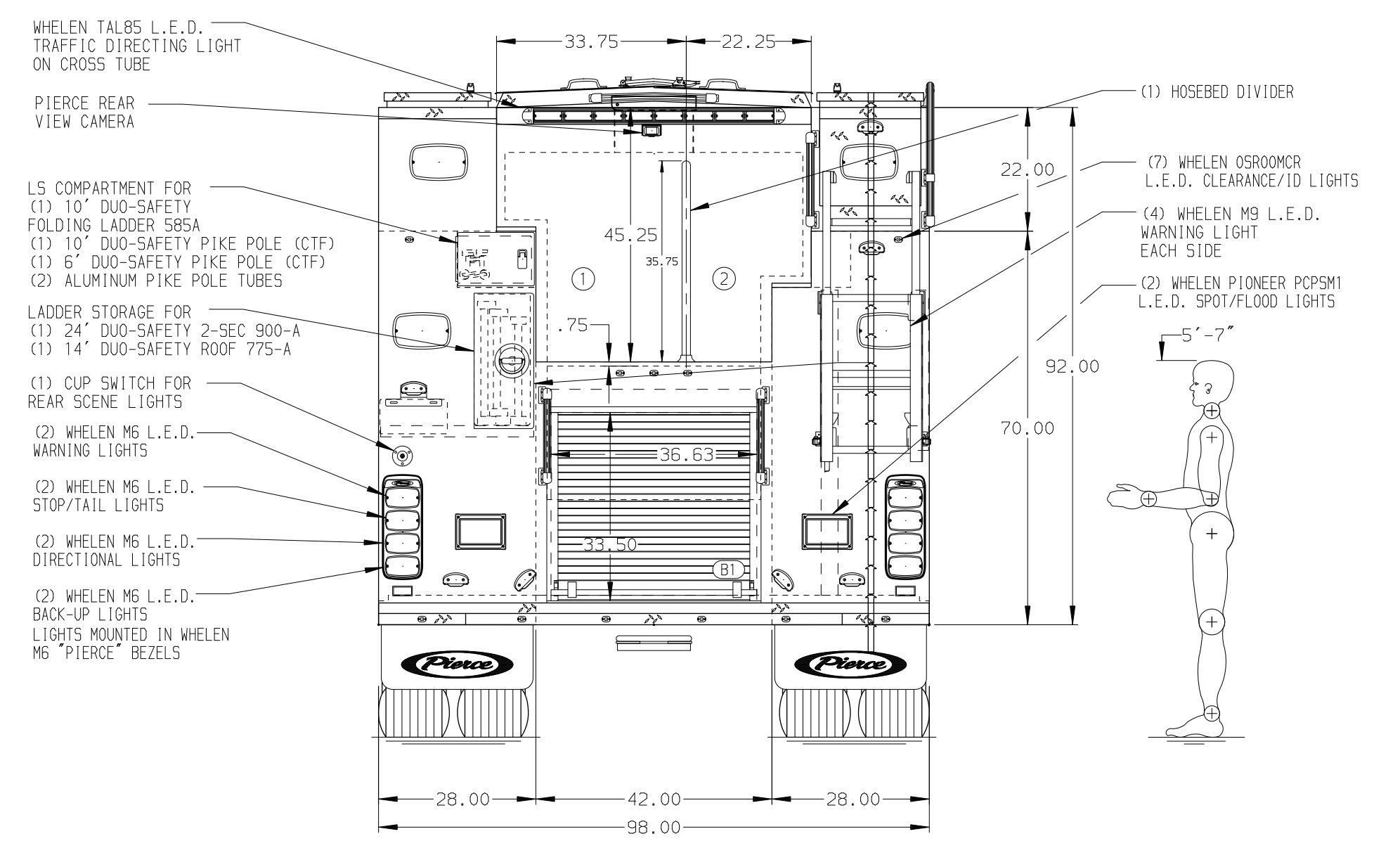
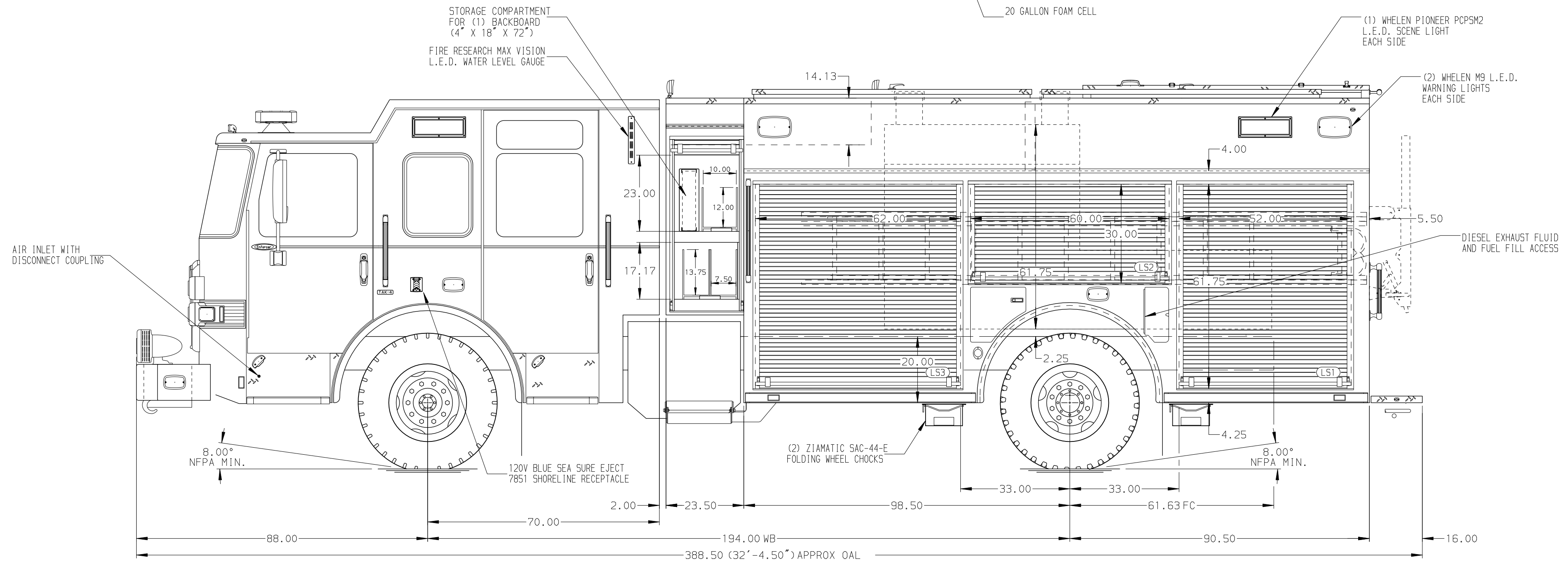


HOSEBED CAPACITIES

① 1000' OF 5.00" D.J. HOSE

② 600' OF 2.50" D.J. HOSE



ALUMINUM BODY

NOTE  
DIMENSIONS SHOWN ARE APPROXIMATE AND ARE SUBJECT TO MINOR DEVIATIONS AS MAY OCCUR OR BE NECESSARY IN CONSTRUCTION. MINOR DETAILS NOT SHOWN.

- BATTERY CHARGER LOCATED BEHIND THE DRIVER'S SEAT
- BATTERY CHARGER INDICATOR LOCATED ON DRIVER'S SEAT RISER
- DUAL L.E.D. LIGHT STRIPS LOCATED IN HOSE BED
- FOUR FULL WIDTH/DEPTH ADJUSTABLE SHELVES LOCATED PER ORDER
- TWO FLOOR MOUNTED SLIDE-OUT TRAYS WITH SIDE SLIDES LOCATED PER ORDER
- TWO SWING-OUT ALUMINUM TOOL BOARDS LOCATED PER ORDER
- PARTITION BETWEEN L51/B1 AND R51/B1

REV	DATE	BY	CH	ENFORCER
04DEC23	MMF	THS		CHASSIS DATA
22NOV23	LME	THS		MAKE
13MAY23	LME	JLL		PIERCE
14JUL22	LME	THS		MODEL

		JOB NO.	37015	
		SCALE	DATE	
TITLE	1500-D-750P, 730 WATER W/20 FOAM, 189" PUC RESCUE		DRAWN BY	28JUN22
FOR	PIERCE FIELD UNIT		CHECKED BY	29JUN22
	APPLETON, WISCONSIN		SHEET SIZE	SHEET NO.
DWG NO.	37015AD		D	1 OF 1