

PUMPER BODY

Medium Aluminum 2nd Gen Pumper

CHASSIS

Enforcer Chassis

CHASSIS AXLE, FRONT, CUSTOM

18,000 Lb Dana Axle

AXLE, REAR

24,000 Lb Dana Axle

ENGINE

450 HP Cummins L9 Engine

TRANSMISSION

Allison 5th Gen, 3000 EVS P

BUMPER

Non Extended Stainless Steel

CAB

6010 Enforcer Cab

BODY

WATER TANK

500 Gallon Poly Water Tank

COMPT, PUMPER, REAR

37.75" FF RollUp Rear Compt

COMPT, PUMPER, LEFT SIDE

152" Lap Full Height Front & Rear FOLER

COMPT, PUMPER, RIGHT SIDE

152" Lap Full Height & Depth Front & Rear

FIRE SUPPRESSION PUMPHOUSE

42" Control Zone Top Mount

PUMP

1500 GPM Waterous CSU

CROSSLAYS, 1.50"

1.50" Crosslays Not Required

CROSSLAYS, 2.50"

(1) 2.50" Standard Capacity

SPEEDLAYS

(2) 1.50" W/Tray Std. Capacity

GENERATOR

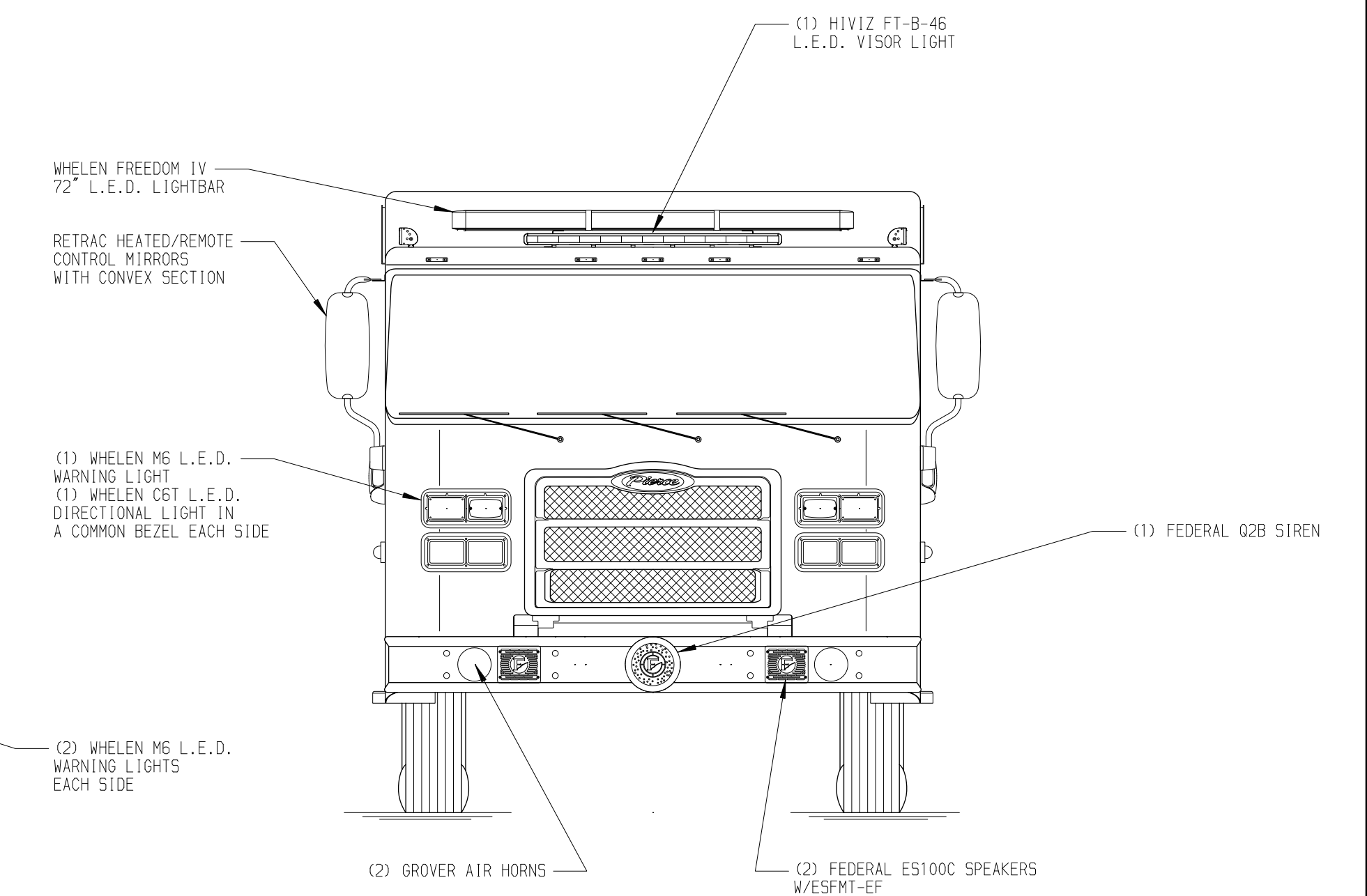
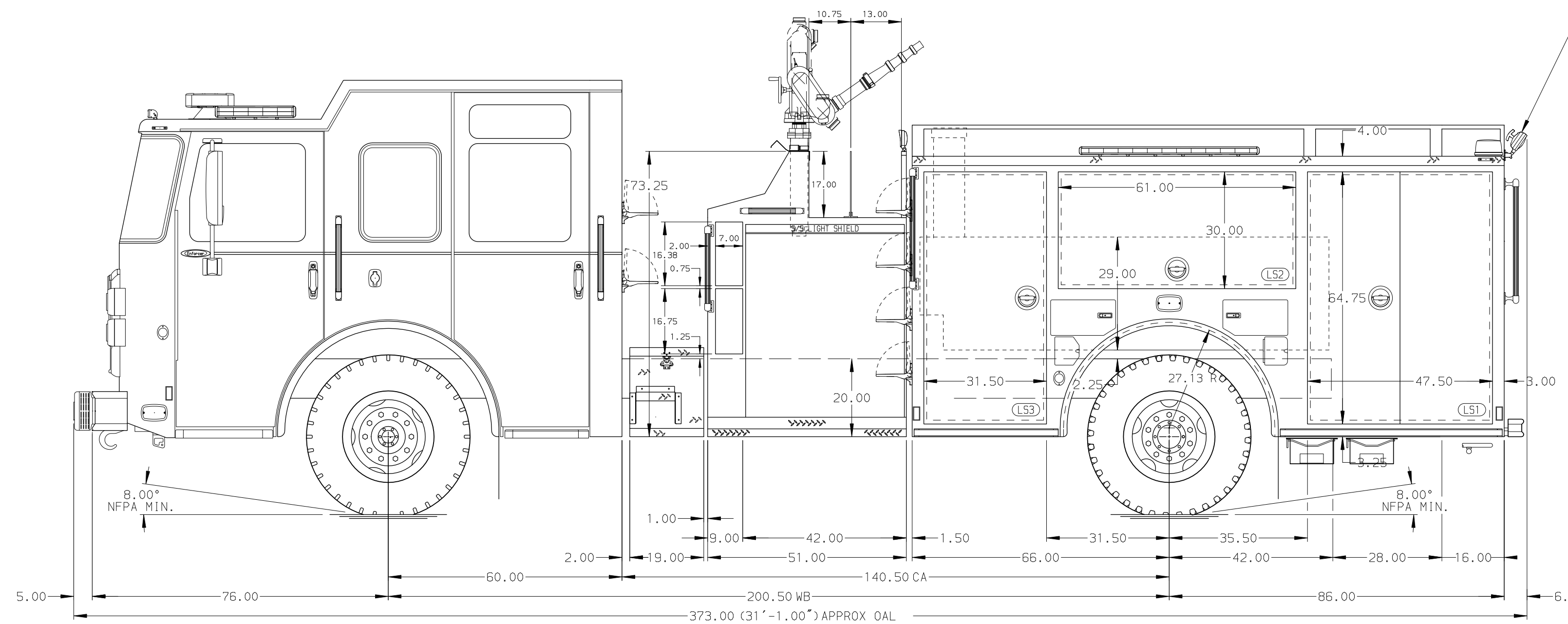
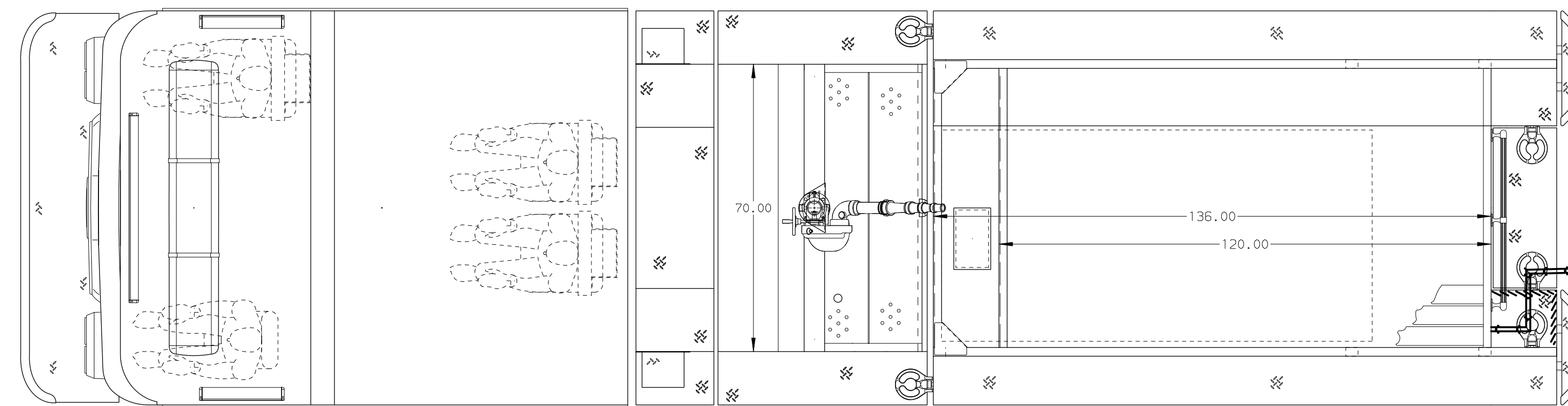
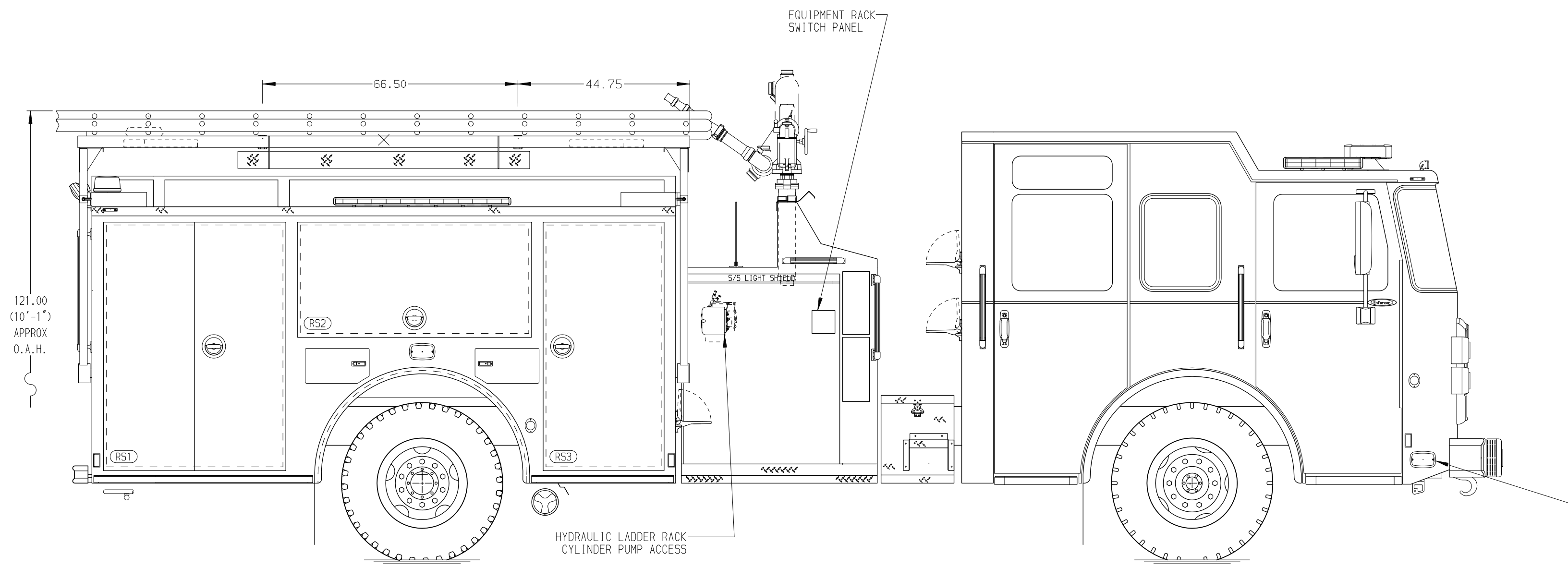
Generator Not Required

Foam System

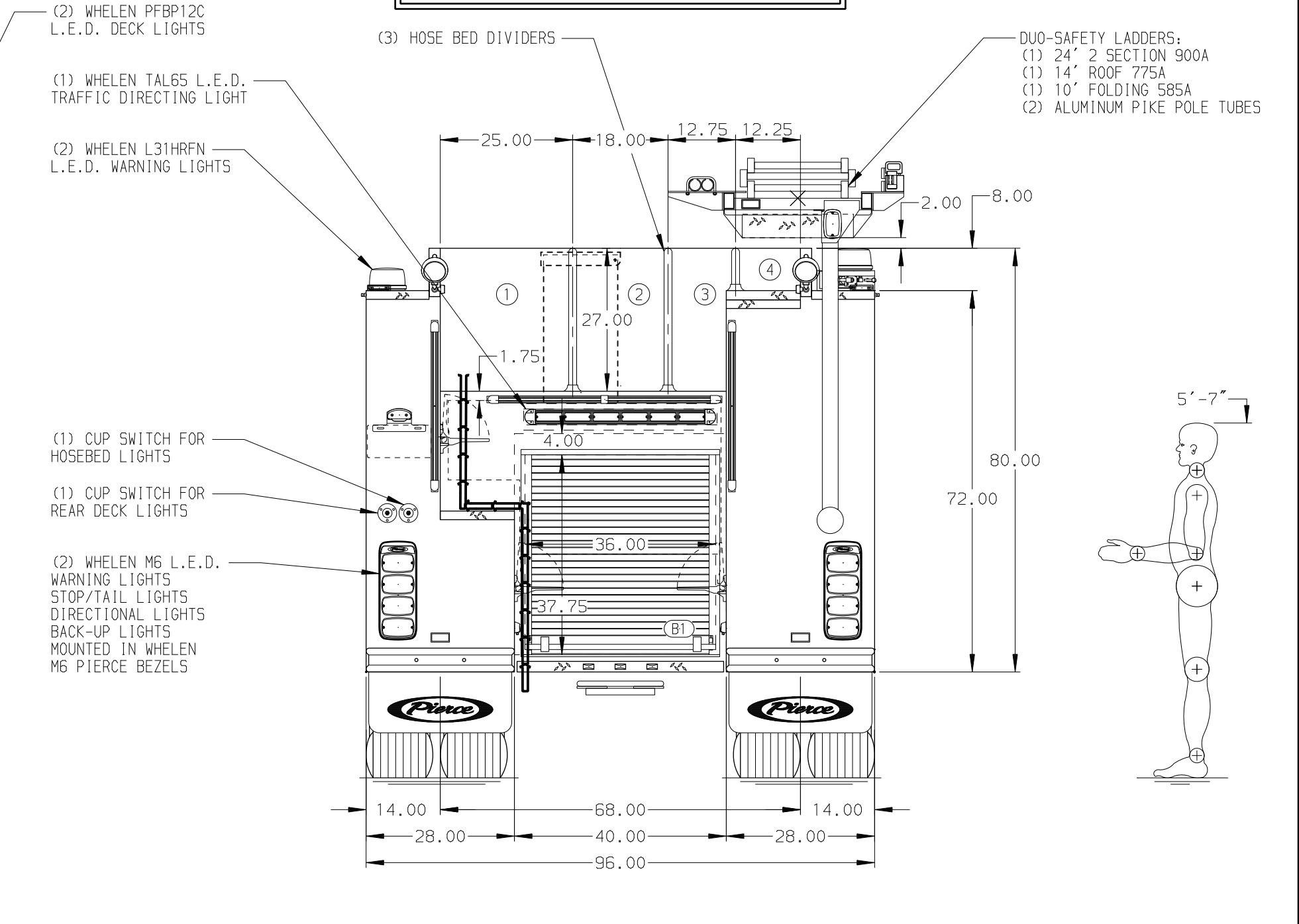
Foam System Not Required

Foam Cell

Foam Cell Not Required



| HOSEBED CAPACITY | |
|------------------|-------------------------------|
| BED 1 | 1000' OF 5.00" D.J. POLY HOSE |
| BED 2 | 700' OF 3.00" D.J. POLY HOSE |
| BED 3 | 100' OF 2.50" D.J. POLY HOSE |
| BED 4 | 150' OF 2.50" D.J. POLY HOSE |



NOTE
DIMENSIONS SHOWN ARE APPROXIMATE AND ARE SUBJECT TO MINOR DEVIATIONS AS MAY OCCUR OR BE NECESSARY IN CONSTRUCTION. MINOR DETAILS NOT SHOWN.

- ONE 1.50 OUTLET WITH 2.00 PIPING AND SWIVEL LOCATED IN CENTER BUMPER TRAY
- SHORELINE RECEPTACLE WITH KUSSMAUL SUPER AUTO-EJECT LOCATED ON DRIVER SIDE OF THE CAB
- AIR INLET WITH DISCONNECT COUPLING IN THE DRIVER SIDE STEPWELL
- BATTERY CHARGER LOCATED IN COMPARTMENT PER SHOP ORDER
- BATTERY CHARGE INDICATOR LOCATED ON THE DRIVER SIDE SEAT RISER
- ADJUSTABLE SHELVES IN COMPARTMENTS PER SHOP ORDER
- ONE FLOOR MOUNTED SLIDE-OUT TRAY IN COMPARTMENT PER SHOP ORDER

CUSTOMER APPROVAL

| | |
|--------------------|-------------|
| APPROVED BY: _____ | DATE: _____ |
| CHASSIS DATA | TITLE |
| MAKE | FOR |
| PIERCE | |
| MODEL | DWG NO. |
| ENFORCER | 37033AD-SH1 |

| | | | |
|----------------------------------|--|------------|----------------|
| Pierce MANUFACTURING INC. | | JOB NO. | 37033 01-02 |
| | | SCALE | DATE |
| | | 1:24 | |
| | | DRAWN BY | 17JAN22 |
| | | MMF | |
| | | CHECKED BY | 17JAN22 |
| | | COL | |
| | | SHEET SIZE | SHEET NO. |
| | | D | 1 OF 2 |